

# Reliable

## Model B-SI & C-SI Air Compressor Panel Supervisory Pressure Maintenance Equipment

cULus Listed  
FM Approved

### Features

- Self-contained air supply.
- System low air indicator.
- Relay for remote signal of low air and/or loss of power.
- Bypass inlet and valve provided for quick filling system with a separate source.
- Cabinet with keyhole slots for easy mounting.
- Stainless steel hose connection kit included

### Product Description

Reliable Air Compressor panels provide a self-contained supervisory air supply for single interlock preaction systems. The air source for the Model B-SI is a 115-60-1, 1/16 HP Gast compressor and the Model C-SI is equipped with a 220/230-50/60-1, 1/16 HP Gast compressor. A System Sensor PS10-2 pressure switch monitors the system air pressure. Approximately 7 psi (0.48 bar) of air will keep the pressure switch contacts open and the air compressor off. A drop of approximately 2 psi (0.14 bar) will switch the contacts to the closed position and the compressor will turn on to replace the air in the system (in case of a small leak). If the pressure drops approximately 3 psi (0.21 bar) the low air signal will activate. The relay provides dry contacts for remote signal of low air pressure or loss of power. The hose kit (included with panel) provides flexibility to connect the Model B-SI and C-SI Air Compressor Panel to the system. The hose kit consists of a 1/4" shut-off valve, 1/4" x 72" stainless-steel hose, 1/4" x 1/2" bushing, and 1/2" check valve. The check valve must be installed horizontally at the opening provided for the air supply on the system. The panel is designed with keyhole slots for ease of wall mounting. A quick-fill bypass connection outside the enclosure is provided to reduce system setup time using an auxiliary compressor, if desired.

**Caution:** The pressure gauge shut-off valve must be closed when using the quick-fill bypass. The quick-fill pressure must not exceed 25 psi (1,7 bar).



Model B-SI (120 VAC) & C-SI (220 VAC) Air Compressor Panel

### Dimensions

|  |  | Table 1              |
|--|--|----------------------|
| Panel Dim.<br>W x H x D                      | Mounting Dim.<br>W x H                                   | Shipping<br>Weight   |
| 16" x 20" x 6"<br>(406mm x 508mm<br>x 152mm) | 14 1/4" x 18 1/4"<br>ø 1/4" Holes (4)<br>(362mm x 464mm) | 27lbs.<br>(12.2 kg.) |

### Pressure Switch Settings

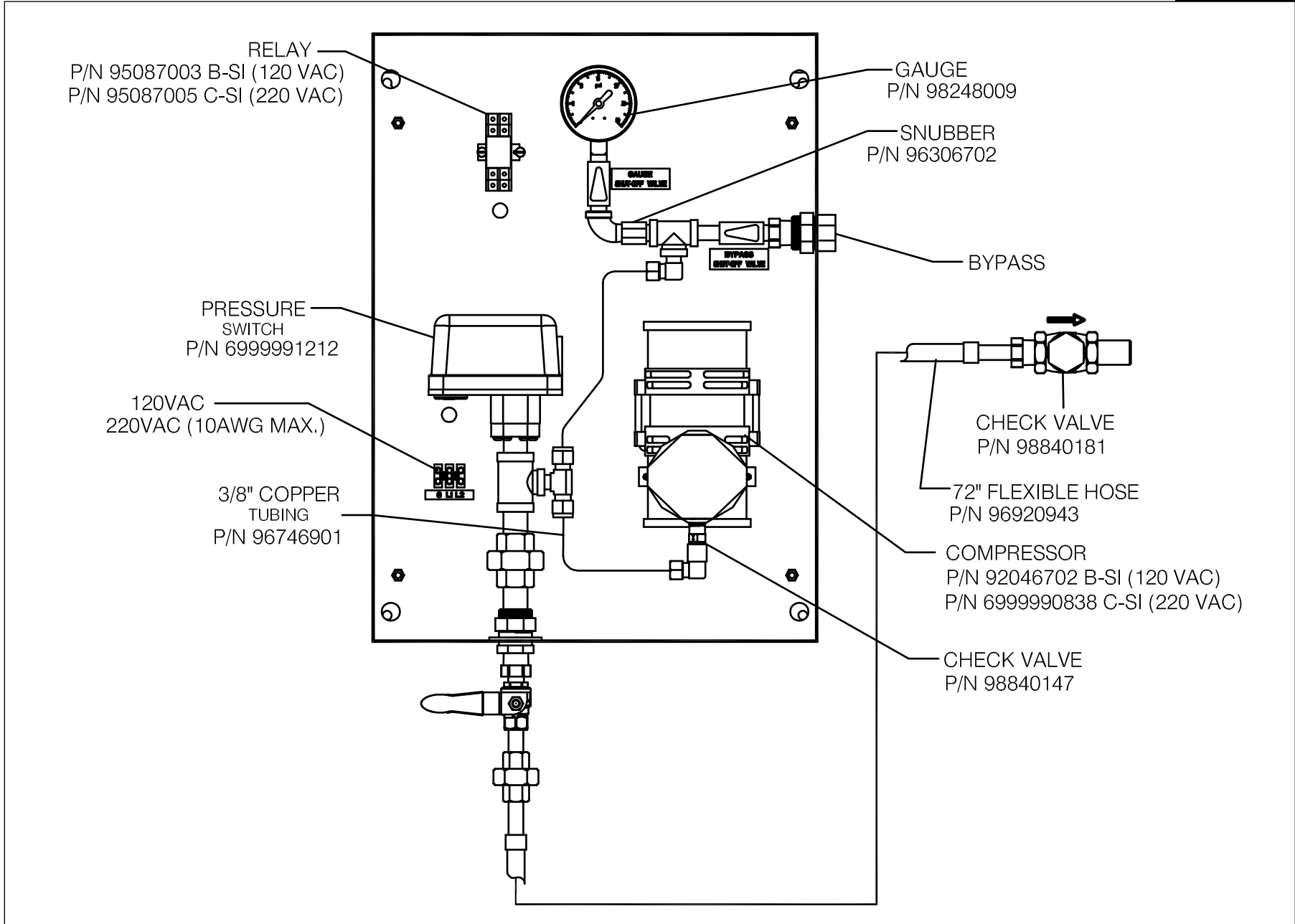
Table 2

| Factory<br>Settings                      | Approximate Switch Transfer<br>Pressure psi (bar) |                        |
|--|---|------------------------|
|  | Increasing<br>Pressure                            | Decreasing<br>Pressure |
| Compressor<br>Pressure Switch # 1        | 7 (0.48)  | 5 (0.34)               |
| Low Pressure light<br>Pressure Switch #2 | 5 (0.34)  | 4 (0.27)               |



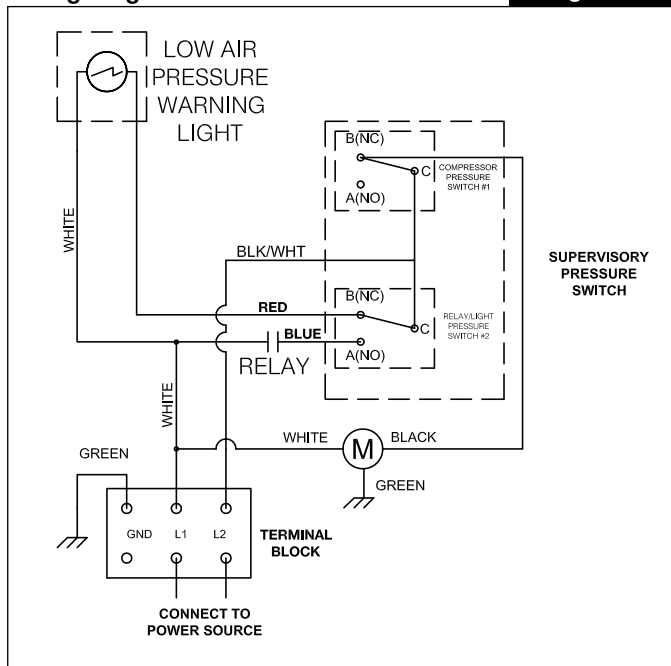
**Model B-SI (120 VAC) P/N 6702010003 and Model C-SI (220 VAC)  
P/N 6702020003 Air Compressor Panels**

**Figure 1**



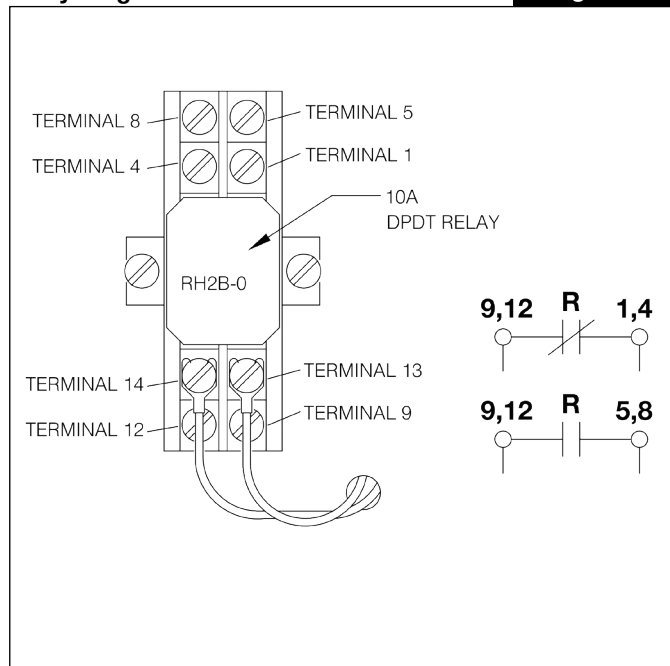
**Wiring Diagram**

**Figure 2**



**Relay Diagram**

**Figure 3**



**Note:** Relay contacts shown in alarm/loss of power condition for remote monitoring.

**Application**

The Reliable Model B-SI and C-SI Air Compressor Panels are designed and listed for use in installations governed by NFPA 13 to provide and supervise the air pressure required for single interlock preaction systems. A 200 gallon system can be filled in approximately 30 minutes. A bypass is provided for quickly filling larger systems.

The Model B-SI and C-SI Air Compressor Panels should not be used with dry pilot single interlock preaction systems. These systems require substantially more air pressure than wet pilot or electrically actuated systems. Refer to manufacturers information for appropriate air supply for dry pilot actuated systems.

**Installation**

Location must be coordinated with, and installation made in accordance with, the requirements of NFPA 13 or NFPA 13R, and all authorities having jurisdiction.

Check valve included with hose kit must be installed in the horizontal position.

All electrical work must be performed in accordance with applicable local and national codes.

**Maintenance**

The owner is responsible for maintaining all parts of the fire protection system in proper operating condition. Any system maintenance or testing that involves placing a system component out of service may eliminate the fire protection that is provided by the fire protection system.

The Reliable Model B-SI/C-SI Air Compressor Panel shall periodically be given a thorough inspection and test. NFPA 25, "Inspection, Testing, and Maintenance of Water Based Fire Protection Systems," provides minimum maintenance requirements. System components shall be tested, operated, cleaned and inspected at least annually and parts replaced as required.

**Listings and Approvals**

Underwriters Laboratories, Inc. and UL Canada (cULus)  
**Listing Category:** Air Pressure Maintenance Devices, Automatic  
**Guide Number:** VIOT  
 FM Approved

**Guarantee**

For Reliable Automatic Sprinkler Co., Inc. guarantee, terms, and conditions, visit [www.reliablesprinkler.com](http://www.reliablesprinkler.com).

**Ordering Information**

**Specify:**

- **Model B-SI Air Compressor Panel** (P/N 6702010003) (120 VAC)
- **Model C-SI Air Compressor Panel** (P/N 6702020003) (220 VAC)