



Model E - Flanged x Flanged



Model E - Flanged x Grooved



Model E3 - Grooved x Grooved

**MODEL E & E3**

**ALARM VALVES**

- For 2-1/2" (65mm), 3" (80mm) & 76mm sizes, see Bulletins 427

& 428

- For 4" (100mm), 6" (150mm) & 8" (200mm) sizes, see Bulletins 407, 417, 409 & 410

Description	Part Number	List Price
<b>MODEL E - FLANGED X FLANGED - VALVE ONLY</b>		
2-1/2" (65mm)	25AE	\$ 1,911.00
3" (80mm)	3AE	\$ 1,911.00
65mm	6102025547	\$ 1,911.00
65mm - BS-E	6102025548	\$ 1,911.00
80mm - BS-E	6102030548	\$ 1,911.00
4" (100mm)	4A	\$ 1,911.00
6" (150mm)	6A	\$ 2,348.85
8" (200mm)	8A	\$ 3,423.00

<b>MODEL E - FLANGED X GROOVED - VALVE ONLY</b>		
2-1/2" - ASA	25AGE	\$ 1,911.00
3" - ASA	3AGE	\$ 1,911.00
4" (100mm)	4AG	\$ 1,911.00
6" (150mm)	6AG	\$ 2,348.85
8" (200mm)	8AG	\$ 3,423.00

<b>MODEL E3 - GROOVED X GROOVED - VALVE ONLY</b>		
2-1/2"	25AGG	\$ 1,911.00
3"	3AGG	\$ 1,911.00
76mm	6102030517	\$ 1,911.00
4"	4AGG	\$ 1,911.00
6"	6AGG	\$ 2,348.85
8"	8AGG	\$ 3,423.00

Description	Part Number	List Price
<b>FULLY ASSEMBLED - MODEL E - FLANGED X FLANGED - VERTICAL</b>		
2-1/2" - Vertical	25AFE3V	\$ 4,328.10
3" - Vertical	3AFE3V	\$ 4,328.10
65mm - Vertical	6504A21041	\$ 4,328.10
65mm - BS-E - Vertical	6504A21043	\$ 4,328.10
80mm - BS-E - Vertical	6504A31041	\$ 4,328.10
<b>FULLY ASSEMBLED - MODEL E - FLANGED X FLANGED - HORIZONTAL</b>		
2-1/2" - Horizontal	25AFE3H	\$ 4,328.10
3" - Horizontal	3AFE3H	\$ 4,328.10
65mm - Horizontal	6504A21241	\$ 4,328.10
65mm - BS-E - Horizontal	6504A21243	\$ 4,328.10
80mm - BS-E - Horizontal	6504A31241	\$ 4,328.10
<b>FULLY ASSEMBLED - MODEL E - FLANGED X GROOVED - VERTICAL</b>		
2-1/2" - Vertical	25AGE3V	\$ 4,328.10
3" - Vertical	3AGE3V	\$ 4,328.10
<b>FULLY ASSEMBLED - MODEL E - FLANGED X GROOVED - HORIZONTAL</b>		
2-1/2" - Horizontal	25AGE3H	\$ 4,328.10
3" - Horizontal	3AGE3H	\$ 4,328.10
<b>FULLY ASSEMBLED - MODEL E3 - GROOVED X GROOVED - VERTICAL</b>		
2-1/2" - Vertical	25AGGE3V	\$ 4,328.10
3" - Vertical	3AGGE3V	\$ 4,328.10
76mm - Vertical	6504A31011	\$ 4,328.10
<b>FULLY ASSEMBLED - MODEL E3 - GROOVED X GROOVED - HORIZONTAL</b>		
2-1/2" - Horizontal	25AGGE3H	\$ 4,328.10
3" - Horizontal	3AGGE3H	\$ 4,328.10
76mm - Horizontal	6504A31211	\$ 4,328.10

**MODEL E & E3  
 ALARM VALVES**

- For 2-1/2" (65mm), 3" (80mm)

& 76mm sizes, see Bulletins 427  
 & 428

- For 4" (100mm), 6" (150mm)  
 & 8" (200mm) sizes, see Bulletins

407, 417, 409 & 410

Description	Part Number	List Price
<b>FULLY ASSEMBLED VALVE (FLANGED X FLANGED)</b>		
4"	4AFT	\$ 4,328.10
6"	6AFT	\$ 4,749.15
8"	8AFT	\$ 5,864.25
<b>FULLY ASSEMBLED VALVE (FLANGED X GROOVED)</b>		
4"	4AGFT	\$ 4,328.10
6"	6AGFT	\$ 4,749.15
8"	8AGFT	\$ 5,864.25
<b>FULLY ASSEMBLED VALVE (GROOVED X GROOVED)</b>		
4"	4AGGFT	\$ 4,328.10
6"	6AGGFT	\$ 4,749.15
8"	8AGGFT	\$ 5,864.25

Description	Part Number	List Price
<b>MODEL E3 TRIM (ONLY) - SEGMENTED / ASSEMBLED</b>		
Vertical - 2, 2-1/2" & 3"	25TE3VP	\$ 1,514.10
Horizontal - 2, 2-1/2" & 3"	25TE3HP	\$ 1,514.10
Vertical — 4", 6", 165mm	4E3P	\$ 1,514.10
Vertical — 8"	8E3P	\$ 1,514.10
Horizontal — 4", 6", 165mm	4E3HP	\$ 1,544.55
Horizontal — 8"	8E3HP	\$ 1,544.55
Vertical — 4", 6", 165mm (W/ Test And Drain)**	4E3TDP	\$ 2,683.80
Vertical — 8" (W/ Test And Drain)	8E3TDP	\$ 2,683.80
Horizontal — 4", 6", 165mm (W/ Test And Drain)**	4E3HTDP	\$ 2,714.25
Horizontal — 8" (W/ Test And Drain)	8E3HTDP	\$ 2,714.25
Optional E3 Pressure Relief Trim Kit	E3PR	\$ 414.75
<b>MODEL E3 TRIM (ONLY) - LOOSE</b>		
Vertical - 2, 2-1/2" & 3"	25TE3VL	\$ 1,514.10
Horizontal - 2, 2-1/2" & 3"	25TE3HL	\$ 1,514.10
Vertical — 4", 6", 165mm	4E3L	\$ 1,235.85
Vertical — 8"	8E3L	\$ 1,235.85
Vertical — 4", 6", 165mm (W/ Test And Drain)**	4E3TDL	\$ 2,404.50
Vertical — 8" (W/ Test And Drain)**	8E3TDL	\$ 2,404.50
Horizontal — 4", 6", 165mm	4E3HL	\$ 1,265.25
Horizontal — 8"	8E3HL	\$ 1,265.25
Horizontal — 4", 6", 165mm (W/ Test And Drain)**	4E3HTDL	\$ 2,434.95
Horizontal — 8" (W/ Test And Drain)**	8E3HTDL	\$ 2,434.95
Optional E3 Pressure Relief Trim Kit	E3PR	\$ 414.75

<b>RETARD CHAMBER &amp; MECHANICAL SPRINKLER ALARM</b>		
Retard Chamber — E-1	RCT	\$ 759.15
Mech. Sprk. Alarm — C	WM	\$ 1,030.05

**Pressure Relief Trim Kit Includes:**

Item	P/N	Description	Units
1	98840194	Relief Valve, 1/2", 175 psig	1
2	98543212	Nipple, Pipe Galv, 1/2" Close	1
3	96920925	Flex Line, Steel, 3/8" x 20"	1
4	98048022	Bushing Reducer, Galv, 1/2" x 3/4"	1
5	95086903	Tee, Male Branch, 3/8" x 1/4" NPT	1



G Right Check Riser

See Bulletin 806

Part Name	Part Number	Short Code	List Price
<b>MODEL G RISER CHECK, GROOVED</b>			
1-1/2" (40mm)	6107000000	15RC	\$ 800.00
1-1/2" (40mm) Red	6107000100	15RCR	\$ 800.00
2" (50mm)	6107010000	2RC	\$ 828.45
2" (50mm) Red	6107010100	2RCR	\$ 828.45
2-1/2" (65mm)	6107020000	25RC	\$ 828.45
76mm	6107076000	76RC	\$ 828.45
3" (80mm)	6107030000	3RC	\$ 828.45
4" (100mm)	6107040000	4RC	\$ 828.45
6" (150mm)	6107060000	6RC	\$ 1,564.50
165mm	6107065000	165RC	\$ 1,564.50
8" (200mm)	6107080000	8RC	\$ 3,087.00
10" (250mm)	6107090000	10RC	\$ 6,000.00
10" (250mm) Red	6107090100	10RCR	\$ 6,000.00
<b>TRIM FOR RISER CHECK VALVES</b>			
1-1/2" & 2" Trim	6506000015	15RTG	\$ 560.70
2-1/2" & 3" Trim	6506000030	25RTG	\$ 560.70
4", 6", 8" & 10" Trim	6506000020	4RTG	\$ 560.70
<b>MODEL G SWING CHECK WITH 1/2" (50MM) DRAIN, GROOVED</b>			
1-1/2" (40mm)	6107000010	15CK	\$ 520.00
1-1/2" (40mm) Red	6107000110	15CKR	\$ 520.00
2" (50mm)	6107010010	2CK	\$ 573.30
2" (50mm) Red	6107010110	2CKR	\$ 573.30
2-1/2" (65mm)	6107020010	25CK	\$ 573.30
76mm	6107076010	76CK	\$ 573.30
3" (80mm)	6107030010	3CK	\$ 573.30
4" (100mm)	6107040010	4CK	\$ 573.30
6" (150mm)	6107060010	6CK	\$ 1,387.05
165mm	6107065010	165CK	\$ 1,387.05
8" (200mm)	6107080010	8CK	\$ 2,756.25
10" (250mm)	6107090010	10CK	\$ 6,000.00
10" (250mm) Red	6107090110	10CKR	\$ 6,000.00
<b>MODEL G CHECK VALVE REPLACEMENT SEAL KIT</b>			
1-1/2" (40mm) (50mm)	6888040015	15GKIT	\$ 60.00
2" (50mm)	6888040020	2GKIT	\$ 60.00
2-1/2" (65mm)	6888040025	25GKIT	\$ 60.00
3" (80mm)	6888040030	3GKIT	\$ 60.00
4" (100mm)	6888040040	4GKIT	\$ 60.00
6" (150mm)	6888040060	6GKIT	\$ 60.00
8" (200mm)	6888040080	8GKIT	\$ 120.00
10" (250mm)	6888040090	10GKIT	\$ 120.00
<b>CVE SWING CHECK VALVES - VALVES ONLY</b>			
CVE 4" (100mm)	6108040000	4CVE	\$ 1,514.25
CVE 6" (150mm)	6108060000	6CVE	\$ 1,968.52
CVE 165mm	6108065000	CVE165MM	\$ 1,968.52
CVE 8" (200mm)	6108080000	8CVE	\$ 3,028.52
<b>FULLY ASSEMBLED CVE SWING CHECK VALVES</b>			
CVE 4" (100mm)	6506000040	4CVET	\$ 2,264.85
CVE 6" (150mm)	6506000041	6CVET	\$ 2,718.45
CVE 8" (200mm)	6506000042	8CVET	\$ 3,967.41
<b>TRIM FOR CVE SWING CHECK VALVES</b>			
All Sizes	6506000044	CVETRIM	\$ 1,577.35



G Swing Check

See Bulletin 807



CVE Swing Check

See Bulletin 810



**DDX-LP  
Dry Pipe Valve System**

All fully assembled valves and Trim include the Potter pressure switches

Part Name	Part Number	Short Code	List Price
<b>DDX LO-PRESSURE DRY PIPE - VALVE ONLY</b>			
Model DDX-LP Valve - 2"	6103022000	2DDX	\$ 5,125.05
Model DDX-LP Valve - 2-1/2"	6103022500	25DDX	\$ 5,125.05
Model DDX-LP Valve - 3"	6103030000	3DDX	\$ 5,290.95
Model DDX-LP Valve - 76MM	6103027600	76DDXMM	\$ 5,125.05
Model DDX-LP Valve - 4"	6103040026	4DDX	\$ 5,407.50
Model DDX-LP Valve - 6"	6103060024	6DDX	\$ 6,647.55
Model DDX-LP Valve - 8"	6103080001	8DDX	\$ 11,042.85
<b>TRIM (ONLY) - INDIVIDUAL PARTS</b>			
2", 2-1/2", 3" Individual Parts (Valve Sold Separately)	6520500010	25DDXDRYLN	\$ 5,737.27
4", 6" & 8" Individual Parts (Valve Sold Separately)	6520501010	4DDXDRYLN	\$ 5,737.27
<b>TRIM (ONLY) - SEGMENTALLY ASSEMBLED</b>			
2", 2-1/2" & 3" Segmentally Assembled (Valve Sold Separately)	6520502010	25DDXDRYPN	\$ 6,062.97
4", 6" & 8" Segmentally Assembled (Valve Sold Separately)	6520503010	4DDXDRYPN	\$ 6,062.97
<b>DDX ACCELERATOR &amp; TRIM KIT</b>			
Accelerator & Trim for DDX 2", 2-1/2", 3", 4" 6" & 8", Type F & LP	6501200019	AEDDXN	\$ 2,101.05
<b>DDX-LP FULLY ASSEMBLED VALVE</b>			
Model DDX-LP 2" Valve with Control Valve	6522508010	2DDXFLPVN	\$ 14,310.85
Model DDX-LP 2" Valve without Control Valve	6522504010	2DDXFLPN	\$ 13,152.70
Model DDX-LP 2-1/2" Valve with Control Valve	6521508010	25DDXFLPVN	\$ 14,310.85
Model DDX-LP 2-1/2" Valve without Control Valve	6521504010	25DDXFLPN	\$ 13,152.70
Model DDX-LP 3" Valve with Control Valve	6523508010	3DDXFLPVN	\$ 14,558.65
Model DDX-LP 3" Valve without Control Valve	6523504010	3DDXFLPN	\$ 13,400.50
Model DDX-LP 76MM Valve without Control Valve	6525505010	76DDXFLPN	\$ 13,400.50
Model DDX-LP 4" Valve with Control Valve	6524508010	4DDXFLPVN	\$ 14,631.10
Model DDX-LP 4" Valve without Control Valve	6524504010	4DDXFLPN	\$ 13,474.00
Model DDX-LP 6" Valve with Control Valve	6526508010	6DDXFLPVN	\$ 15,689.50
Model DDX-LP 6" Valve without Control Valve	6526504010	6DDXFLPN	\$ 14,532.40
Model DDX-LP 165MM Valve without Control Valve	6527505010	165DDXFLPN	\$ 14,532.40
Model DDX-LP 8" Valve with Control Valve	6528508010	8DDXFLPVN	\$ 21,781.60
Model DDX-LP 8" Valve without Control Valve	6528504010	8DDXFLPN	\$ 18,444.70



**EX LOW PRESSURE  
DRY PIPE VALVE**

- Light weight, low friction loss
- Convenient and safe external reset; no priming water required

• See Bulletins 359

**NEW**

All Trim except individual parts loose will include the pressure switches

Part Name	Part Number	Short Code	List Price
<b>MODEL EX DRY PIPE VALVE — GROOVED/GROOVED - VALVE ONLY</b>			
EX Dry - 2" — Grooved	6101021010	2EX	\$ 3,704.40
EX Dry - 2-1/2" — Grooved	6101025010	25EX	\$ 3,704.40
EX Dry - 3" — Grooved	6101031010	3EX	\$ 3,704.40
EX Dry - 76mm — Grooved	6101051015	76EX	\$ 3,704.40
EX Dry - 4" — Grooved	6101041010	4EX	\$ 4,862.03
EX Dry - 6" — Grooved	6101061010	6EX	\$ 6,135.41
EX Dry - 165mm — Grooved	6101065015	165EX	\$ 6,135.41
EX Dry - 8" - Grooved	6101081010	8EX	\$ 9,000.00
<b>TRIM (ONLY) — INDIVIDUAL PARTS (LOOSE)</b>			
2", 2-1/2", 3" & 76mm	65X0000000	2EXDRYN	\$ 2,199.75
4", 6", 165mm & 8"	65X0010000	4EXDRYN	\$ 2,431.80
<b>TRIM (ONLY) — SEGMENTALLY ASSEMBLED</b>			
2", 2-1/2", 3" & 76mm	65X0021000	2EXDRYSN	\$ 3,800.00
4", 6", 165mm & 8"	65X0031000	4EXDRYSN	\$ 4,000.00
<b>FULLY ASSEMBLED VALVE — WITH BASIC TRIM</b>			
EX Dry - 2" — Grooved	65X2141000	2EXBN	\$ 6,895.04
EX Dry - 2-1/2" — Grooved	65X1141000	25EXBN	\$ 6,895.04
EX Dry - 3" — Grooved	65X3141000	3EXBN	\$ 6,895.04
EX Dry - 76mm — Grooved	65X5241000	76EXBN	\$ 6,895.04
EX Dry - 4" — Grooved	65X4141000	4EXBN	\$ 8,180.55
EX Dry - 6" — Grooved	65X6141000	6EXBN	\$ 9,466.07
EX Dry - 165mm — Grooved	65X7241000	165EXBN	\$ 9,466.07
EX Dry - 8" — Grooved	65X8141000	8EXBN	\$ 12,600.00
<b>FULLY ASSEMBLED VALVE — WITH CONTROL VALVE</b>			
EX Dry - 2" — Grooved	65X2151000	2EXBCVN	\$ 8,180.55
EX Dry - 2-1/2" — Grooved	65X1151000	25EXBCVN	\$ 8,180.55
EX Dry - 3" — Grooved	65X3151000	3EXBCVN	\$ 8,180.55
EX Dry - 4" — Grooved	65X4151000	4EXBCVN	\$ 9,349.20
EX Dry - 6" — Grooved	65X6151000	6EXBCVN	\$ 11,219.04
EX Dry - 8" — Grooved	65X8151000	8EXBCVN	\$ 15,000.00
<b>FULLY ASSEMBLED VALVE - WITH ACCELERATOR</b>			
EX Dry - 2" — Grooved	65X2141100	2EXBAN	\$ 8,180.55
EX Dry - 2-1/2" — Grooved	65X1141100	25EXBAN	\$ 8,180.55
EX Dry - 3" — Grooved	65X3141100	3EXBAN	\$ 8,180.55
EX Dry - 4" — Grooved	65X4141100	4EXBAN	\$ 9,349.20
EX Dry - 6" — Grooved	65X6141100	6EXBAN	\$ 11,219.04
EX Dry - 8" — Grooved	65X8141100	8EXBAN	\$ 15,000.00
<b>FULLY ASSEMBLED VALVE - WITH CONTROL VALVE AND ACCELERATOR</b>			
EX Dry - 2" — Grooved	65X2151100	2EXBACVN	\$ 8,904.00
EX Dry - 2-1/2" — Grooved	65X1151100	25EXBACVN	\$ 9,349.20
EX Dry - 3" — Grooved	65X3151100	3EXBACVN	\$ 8,180.55
EX Dry - 4" — Grooved	65X4151100	4EXBACVN	\$ 10,517.85
EX Dry - 6" — Grooved	65X6151100	6EXBACVN	\$ 12,387.69
EX Dry - 8" — Grooved	65X8151100	8EXBACVN	\$ 16,100.00
<b>ACCELERATOR &amp; TRIM KIT</b>			
Accelerator & Trim Kit	6516000003	AEEX	\$ 2,101.05

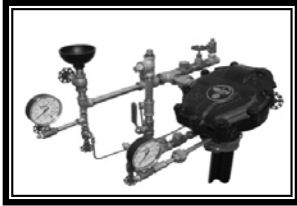


**EX LOW PRESSURE  
DRY PIPE VALVE**

- Light weight, low friction loss
- Convenient and safe external reset; no priming water required
- See Bulletins 358 & 359

Part Name	Part Number	List Price
<b>MODEL EX DRY PIPE VALVE — FLANGE/FLANGE - VALVE ONLY</b>		
EX Dry - 4" — Flange/Flange	4EXF	\$ 4,862.03
EX Dry - 6" — Flange/Flange	6EXF	\$ 6,135.41
EX Dry - 8" - Flange/Flange	8EXF	\$ 9,000.00
<b>TRIM (ONLY) — INDIVIDUAL PARTS (LOOSE)</b>		
2", 2-1/2", 3" & 76mm	2EXDRY	\$ 2,199.75
4", 6", 165mm & 8"	4EXDRY	\$ 2,431.80
<b>TRIM (ONLY) — SEGMENTALLY ASSEMBLED</b>		
2", 2-1/2", 3" & 76mm	2EXDRYS	\$ 3,125.85
4", 6", 165mm & 8"	4EXDRYS	\$ 3,357.90
<b>FULLY ASSEMBLED VALVE — WITH BASIC TRIM</b>		
EX Dry - 4" — Flange/Flange	4EXFB	\$ 8,103.38
EX Dry - 6" — Flange/Flange	6EXFB	\$ 9,376.76
EX Dry - 8" — Flange/Flange	8EXFB	\$ 11,576.25
<b>FULLY ASSEMBLED VALVE - WITH ACCELERATOR</b>		
EX Dry - 4" — Flange/Flange	4EXFBA	\$ 9,261.00
EX Dry - 6" — Flange/Flange	6EXFBA	\$ 11,113.20
EX Dry - 8" — Flange/Flange	8EXFBA	\$ 13,891.50
<b>MODEL EX DRY PIPE VALVE — FLANGE/GROOVED - VALVE ONLY</b>		
EX Dry - 4" — Flange/Grooved	4EXFG	\$ 4,862.03
EX Dry - 6" — Flange/Grooved	6EXFG	\$ 6,135.41
EX Dry - 165mm — Flange/Grooved	6101061045	\$ 6,135.41
<b>FULLY ASSEMBLED VALVE — WITH BASIC TRIM</b>		
EX Dry - 4" — Flange/Grooved	4EXFGB	\$ 8,103.38
EX Dry - 6" — Flange/Grooved	6EXFGB	\$ 9,376.76
EX Dry - 165mm — Flange/Grooved	6506A61040	\$ 9,376.76
<b>FULLY ASSEMBLED VALVE - WITH ACCELERATOR</b>		
EX Dry - 4" — Flange/Grooved	4EXFGBA	\$ 9,261.00
EX Dry - 6" — Flange/Grooved	6EXFGBA	\$ 11,113.20

**Note:** For 50mm, 65mm, 80mm and 76mm metric installations, a 1-1/4" NPT x R1-1/4, ISO 7/1 x Close Nipple (Reliable P/N 98543403) is sold separately as an adapter for the single drain outlet of the trim(s). For 100mm 150mm & 165mm metric installations, a 2" NPT x R2, ISO 7/1 x Close Nipple (P/N 9853401) is sold separately as a an adapter for the single drain outlet of the trim(s).



Model A



Model D

DRY PIPE VALVES

- See Bulletins 350, 351, 352, 353

Part Name	Part Number	List Price
<b>MODEL A THREADED OR GROOVED</b>		
Model A - 2-1/2" — Threaded	25D	\$ 3,910.20
Model A - 2-1/2" — Grooved	25DG	\$ 3,910.20
<b>MODEL A METRIC</b>		
Model A - 65mm	6101020020	\$ 3,910.20
<b>MODEL D FLANGED OR GROOVED</b>		
4" — Flanged	4D	\$ 4,604.25
4" — Grooved	4DG	\$ 4,604.25
6" — Flanged	6D	\$ 5,849.55
6" — Grooved	6DG	\$ 5,849.55
<b>MODEL D METRIC</b>		
Model D — 100mm	6101040520	\$ 4,604.25
Model D — 150mm	6101060520	\$ 5,849.55
<b>TRIM (ONLY) — INDIVIDUAL PARTS</b>		
2-1/2"	25BDRYG	\$ 1,904.70
4"	4BDRYG	\$ 1,904.70
6"	4BDRYG	\$ 1,904.70
<b>TRIM (ONLY) — SEGMENTALLY ASSEMBLED</b>		
2-1/2"	25BDRYPG	\$ 2,213.40
4"	4BDRYPG	\$ 2,213.40
6"	4BDRYPG	\$ 2,213.40
<b>FACTORY TRIMMED VALVES<sup>1</sup></b>		
4" — Flanged	4DFTG	\$ 7,081.20
4" — Grooved	4DGFTG	\$ 7,081.20
4" w/ Accelerator — Flanged	4DFTAG	\$ 9,708.30
4" w/ Accelerator — Grooved	4DGFTAG	\$ 9,708.30
6" — Flanged	6DFTG	\$ 8,410.50
6" — Grooved	6DGFTG	\$ 8,410.50
6" w/ Accelerator — Flanged	6DFTAG	\$ 10,976.70
6" w/ Accelerator — Grooved	6DGFTAG	\$ 10,976.70

<sup>1</sup> Factory Trimmed Valve Includes Valve and Trim



Model B-1 Accelerator

**VALVES ACCESSORIES**

- See Bulletins 250, 251, 320 & 322



**NITROGEN MAINTENANCE DEVICES**

- NS-PaK and NS-ASAM
- See Bulletin 254

**NEW**

**ACD Dry System Auxiliary Condensate Drain w-Sight Glass**

- See Bulletin 441

Part Name	Part Number	Short Code	List Price
<b>ACCELERATOR</b>			
B1 Accelerator	6301000300	AE	\$ 1,968.75
B2 Accelerator Trim	6516000002	ACT	\$ 809.55
Replacement Parts Kit - B1	6888000100	B1RPK	\$ 668.85
<b>DRY VALVE TRIM ACCESSORIES</b>			
Fill Line- Model A (2-1/2")	6501110100	25FLTG	\$ 256.20
Fill Line- Model D (4 & 6")	6501070100	4FLTG	\$ 256.20
Priming Chamber	6501080100	PCG	\$ 447.30
<b>AIR MAINTENANCE DEVICE</b>			
A Owner's Air (factory set 10psi)	6304001110	AMDA10	\$ 1,235.85
A Owner's Air (factory set 23psi)	6304001123	AMDA23	\$ 1,235.85
B Air Compressor Control Assembly	6304012100	AMDB	\$ 1,403.85
<b>PRESSURE ALARM SWITCHES</b>			
EPS10-1 Alarm, Single SPDT (System Sensor)- Set 4-8PSI	6999991339	EPS10-1	\$ 247.77
EPS10-2 Alarm, Double SPDT (System Sensor)- Set 4-8PSI	6999991212	EPS10-2	\$ 287.21
EPS40-1 Supervisory, Single SPDT- Adj 10-100PSI	6999991213	EPS40-1	\$ 247.77
EPS40-2 High/Low Supervisory Double SPDT- Adj 10-100PSI	6999991340	EPS40-2	\$ 287.21
<b>VALVE SEAT WRENCHES</b>			
2-1/2" & 4" Model D Dry Pipe Valve	6881340000	W4DPV	\$ 193.20
6" Model D Dry Pipe Valve	6881360000	W6DPV	\$ 210.00

Description	Part Number	Short Code	List Price
<b>NS-PAK</b>			
NS-PaK Nitrogen Regulator System	6704030021	NSPAK	\$ 7,875.00
<b>NS-ASAM</b>			
Nitrogen Maintenance Device with Pressure Switch	6704030022	NSASAM	\$ 5,250.00

Part Name	Part Number	Short Code	List Price
<b>DRY SYSTEM AUXILIARY CONDENSATE DRAIN</b>			
ACD Dry System Auxiliary Condensate Drain w- Sight Glass	6501190000	ACD	\$ 683.55





**TD TEST AND DRAIN**

• See Bulletin 618

**NEW**

Size	K-Factor	Part Number	Short Code	List Price
<b>RASCO TEST &amp; DRAIN - THREADED</b>				
1" (25mm)	2.8 (40)	7M99003865	RTD128	\$ 320.48
1" (25mm)	4.2 (60)	7M99003866	RTD142	\$ 320.48
1" (25mm)	5.6 (80)	7M99003867	RTD156	\$ 320.48
1-1/4" (32mm)	4.2 (60)	7M99003868	RTD12542	\$ 425.78
1-1/4" (32mm)	5.6 (80)	7M99003869	RTD12556	\$ 425.78
1-1/4" (32mm)	8 (115)	7M99003870	RTD1258	\$ 425.78
1-1/4" (32mm)	11.2 (160)	7M99003871	RTD125112	\$ 425.78
2" (50mm)	5.6 (80)	7M99003872	RTD256	\$ 694.18
2" (50mm)	8 (115)	7M99003873	RTD28	\$ 694.18
2" (50mm)	11.2 (160)	7M99003874	RTD2112	\$ 694.18
2" (50mm)	16.8 (240)	7M99003875	RTD2168	\$ 694.18

**PRESSURE RELIEF TRIM KITS**

• See Bulletin 618

**NEW**

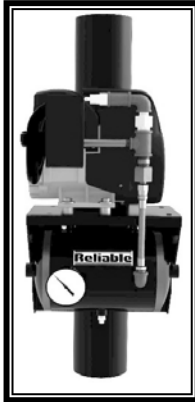
Description	Part Number	Short Code	List Price
<b>PRESSURE RELIEF TRIM KITS</b>			
Pressure Relief Kit - 175 psi	6501203550	PRT175	\$ 200.00
Pressure Relief Kit - 185 psi	6501203545	PRT185	\$ 200.00
Pressure Relief Kit - 210 psi	6501213550	PRT210	\$ 200.00
Pressure Relief Kit - 260 psi	6501203546	PRT260	\$ 300.00
Pressure Relief Kit - 310 psi	6501203547	PRT360	\$ 300.00
<b>LOCKING KITS</b>			
Lock Kits, 1" & 1-1/4"	6990021646	LK1125	\$ 50.00
Lock Kits, 2"	6990021647	LK2	\$ 50.00

**A PRESSURE RELIEF VALVE**

• See Bulletin 257

**NEW**

Description	Part Number	Short Code	List Price
<b>MODEL A PRESSURE RELIEF VALVE - NPT</b>			
A Pressure Relief Valve, 175 psi, ½ NPT	6501000001	PRV175	\$ 100.00
A Pressure Relief Valve, 185 psi, ½ NPT	6501000002	PRV185	\$ 100.00
A Pressure Relief Valve, 210 psi, ½ NPT	6501000003	PRV210	\$ 150.00
A Pressure Relief Valve, 260 psi, ½ NPT	6501000004	PRV260	\$ 150.00
A Pressure Relief Valve, 310 psi, ½ NPT	6501000005	PRV310	\$ 150.00



QRM RISER & TANK MOUNTED

AIR COMPRESSORS

• See Bulletin 256

**NEW**

Description	Part Number	List Price
<b>AIR COMPRESSORS - TANKLESS w/CHECK VALVE &amp; PRESSURE SWITCH</b>		
Reliable, QRM25115 1/4HP, 115VAC, Tankless	6872000001	\$ 2,496.25
Reliable, QRM50115 1/2HP, 115VAC, Tankless	6872000005	\$ 3,263.42
<b>AIR COMPRESSORS - TANK MOUNTED</b>		
Reliable, QRM25115T 1/4HP, 115VAC, Tank	6872000003	\$ 2,941.95
Reliable, QRM50115T 1/2HP, 115VAC, Tank	6872000007	\$ 3,736.12
Reliable, QRM100115T 1 HP, 115VAC, Tank	6872000009	\$ 4,877.59
<b>CONNECTION KITS</b>		
Connection Kit, Tankless Compressor	650120011G	\$ 468.96
Connection Kit, Tank Mounted Compressor	650120011H	\$ 1,130.98
<b>FLEX HOSE -- SOLD SEPARATELY</b>		
Flex Hose, Stainless Steel, 1/2" x 30"	6872000000	\$ 174.24


**AIR  
COMPRESSORS**

Part Name	Part Number		List Price
<b>AIR COMPRESSORS -- BARE</b>			
1/6 HP, 115-60-1, Gast 1LAA-10-M100X	16A		\$ 1,074.36
1/4 HP, 115-60-1, Gast 2LAF-10-M200X	14A		\$ 1,292.04
1/3 HP, 115-60-1, Gast 3LBA-33-M300X	13A		\$ 1,545.74
1/2 HP, 115-60-1, Gast 4LCB-10-M450X	12A		\$ 1,935.60
3/4 HP, 115/230-60-1, Gast 5LCA-23-550NGX	34A		\$ 2,012.46
3/4 HP, 230/460-60-3, Gast 5LCA-10-M553	34A3		\$ 5,150.00
1 HP, 115/230-60-1, Gast 6LCF-10-M616X	1A		\$ 2,568.90
1-1/2 HP, 115/230-60-1, Gast 7LDE-10-M700X	112A		\$ 4,285.21
2 HP, 115/230-60-1, Gast 8LDF-10-M850X	2A		\$ 5,272.74
<b>WITH CHECK VALVE AND PRESSURE SWITCH</b>			
1/6 HP, 115-60-1, Gast 1LAA-32-M100X	16PA		\$ 1,687.27
1/4 HP, 115-60-1, Gast 2LAF-12-M200X	14PA		\$ 1,787.81
1/3 HP, 115-60-1, Gast 3LBA-32-M300X	13PA		\$ 1,996.83
1/2 HP, 115-60-1, Gast 4LCB-21-M450X	12PA		\$ 2,380.47
3/4 HP, 115/230-60-1, Gast 5LCA-22-M550X	34PA		\$ 2,578.31
1 HP, 115/230-60-1, Gast 6LCF-13-M616X	1PA		\$ 3,077.21
1-1/2 HP, 115/230-60-1, Gast 7LDE-16-M750X	112PA		\$ 4,709.33
2 HP, 115/230-60-1, Gast 8LDF-16-M850X	2PA		\$ 5,992.97
<b>AIR COMPRESSORS -- TANK MOUNTED</b>			
1/6 HP, 115-60-1, Gast 1HAB-11T-M100X, 2 GAL	16TA		\$ 2,521.29
1/4 HP, 115-60-1, Gast 2LAF-11T-M200X, 12 GAL	14TA		\$ 3,452.81
1/3 HP, 115-60-1, Gast 3LBA-11T-M300AX 12 GAL	13TA		\$ 3,923.73
1/2 HP, 115-60-1, Gast 4LCB-11T-M450X, 20 GAL	12TA		\$ 4,294.01
3/4 HP, 115/230-60-1, Gast 5LCA-11T-M550X, 20 GAL	34TA		\$ 4,429.31
1 HP, 115/230-60-1, Gast 6LCF-11T-M616X, 30 GAL	1TA		\$ 5,383.96
1-1/2 HP, 115/230-60-1, Gast 7LDE-11T-M750X, 30 GAL	112TA		\$ 8,040.04
2 HP, 115/230-60-1, Gast 8LDF-11TC-M850X, 30GAL	2TA		\$ 10,879.29
<b>AIR COMPRESSORS -- REPAIR KITS *</b>			
3/4 HP, Repair Kit	6888000020		\$ 347.41
1-1/2 HP, Repair Kit	6888000030		\$ 556.59
Riser Mounting Brackets #AT670	6999990969		\$ 147.80
Riser Mounting Brackets #AT670A	6990007698		\$ 313.71

\*Repair Kit Contains: Gaskets, Piston, Seals, Piston Rings, In/Out Valve Plates, Manifold Seals and Felts (for Filters)



<b>HEAVY DUTY - SINGLE PHASE - TANK MOUNTED</b>			
		System Capacity	
S175-HD1-115 (115V, 1HP, 3 GALLON)	6990012386	175 gallons	\$ 2,620.00
S265H-HD1-115 (115V, 1-1/2 HP, 3 GALLON)	6990012600	265 gallons	\$ 2,760.36
S325H-HD1-115 (115V, 1-1/2 HP, 3 GALLON)	6990012601	325 gallons	\$ 2,807.14
S500H-HD1-115 (115V, 1-1/2 HP, 30 GALLON)	6990012602	500 gallons	\$ 4,023.57
S750H-HD1-230 (3HP,230V,30 GALLON H)	6990013997	750 gallons	\$ 4,631.79
S900H-HD1-230 (5HP,230V,30 GALLON H)	6990013998	900 gallons	\$ 4,678.57
S1300H-HD1-230S (5HP,230V,60 GALLON H)	6990013999	1300 gallons	\$ 7,438.93
S1700H-HD1-230S (7.5HP,230V,60 GALLON H)	6990014000	1700 gallons	\$ 8,608.57
<b>STANDARD DUTY - SINGLE PHASE - TANK MOUNTED</b>			
S300H-SD1-115 (1HP,115V,3 GALLON H)	6990013994	300 gallons	\$ 2,370.59
S2000H-SD1-230S (7.5HP,230V,60 GALLON H)	6990014001	2000 gallons	\$ 7,906.79

 Valves  
 ACCESSORIES

VALVE ACCESSORIES

Part Name	Part Number	List Price
<b>PRESSURE GAUGES</b>		
Water	WATER	\$ 90.00
Air	AIR	\$ 96.22
Air (0-60 oz/in <sup>2</sup> )	98248002	\$ 340.84
<b>INSPECTORS TEST CONNECTIONS</b>		
Sight Test Type (Model B)	ISC	\$ 371.70
Blind Test Type (Model A)	IBC	\$ 123.90
<b>AUTOMATIC BALL DRIPS</b>		
1/2" NPT (Female)	78653500	\$ 215.57
3/4" NPT (Female)	78653700	\$ 246.33
<b>MECHANICAL BALL DRIPS</b>		
1/2" NPT (Female)	78653100	\$ 384.83
<b>STRAINER</b>		
3/4" NPT (Female)	78650200	\$ 226.17
<b>MISCELLANEOUS</b>		
Model C Sight Drain 2" NPT (Female)	6863000000	\$ 403.20
Model B Drum Drip Only 3/4" NPT (Female)	71010448	\$ 247.17
Model A Fill Cup 1/2" NPT (Female)	75000050	\$ 116.66
Model A Fill Cup 3/4" NPT (Female)	75000075	\$ 131.99
Model A Control Valve Seal Only	6869800000	\$ 32.55
<b>SIGNS—MODEL A</b>		
Valve Control Sign	6892011000	\$ 14.40
<b>SIGNS—MODEL B</b>		
Inspector Test Sign	ITS	\$ 2.80
Open Sprinkler Control Sign	OSCS	\$ 3.00
Open Sprinkler Drain Sign	OSDS	\$ 3.00
Test Valve Sign	TVS	\$ 3.00
Water Motor Line Sign	WMLS	\$ 3.00
Auxiliary Drain Sign	ADS	\$ 2.80
Main Drain Sign	MDS	\$ 2.80
Drain Sign	DS	\$ 2.70
Alarm Test Sign	ATS	\$ 3.00
<b>SIGNS—MODEL C</b>		
Cold Weather Sign	CWS	\$ 12.00
<b>SIGNS—MODEL D</b>		
Fire Alarm Sign	FAS	\$ 14.40
<b>SIGNS—MODEL E</b>		
Hydraulically Calculated System	HCS	\$ 7.90

Please refer to the latest sales bulletin for specific approval listings and available finishes. See our "Specialties Page" for special finish charges — including Teflon Tape. Items that are MTO allow 7-10 work days.



Residential Riser

- See Bulletin 425

Part Name	Size	Part Number	Short Code	List Price
<b>RISER ASSEMBLIES</b>				
Base Unit	1" (30mm)	6A000RS000	1RRN	\$ 974.40
Base Unit and Pressure Relief Valve Trim	1" (30mm)	6A000RS001	1RRTN	\$ 1,411.20
Base Unit with 1 x 1/2" Test & Drain	1" (30mm)	6A000RS030	1RRDN	\$ 1,529.85
Base Unit	1-1/2" (40mm)	6A030RS000	15RRN	\$ 974.40
Base Unit and Pressure Relief Valve Trim	1-1/2" (40mm)	6A030RS001	15RRTN	\$ 1,411.20
Base Unit with 1 x 1/2" Test & Drain	1-1/2" (40mm)	6A030RS030	15RRDN	\$ 1,529.85
Base Unit	2" (50mm)	6A060RS000	2RRN	\$ 1,088.85
Base Unit and Pressure Relief Valve Trim	2" (50mm)	6A060RS001	2RRTN	\$ 1,525.65
Base Unit with 1 x 1/2" Test & Drain	2" (50mm)	6A060RS030	2RRDN	\$ 1,644.30
<b>RISER ACCESSORIES</b>				
Pressure Relief Valve Trim (good for all sizes)		6501203550	15PRTCR	\$ 229.95
Optional Support Bracket Kit		6899190001	RRB	\$ 87.13

**Note:** Other combinations available upon request.



Model CR Commercial Riser

- For Commercial Applications
- See Bulletin 617



Model CR Commercial Riser with Test & Drain

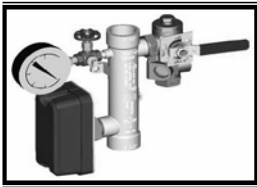
- For Commercial Applications
- See Bulletin 617

Part Name	Size	Part Number	Short Code	List Price
<b>COMMERCIAL RISER WITH BASIC TRIM</b>				
Model CR Commercial Riser - Threaded	1-1/2" (40mm)	6A080CS000	15CRB	\$ 1,069.38
Model CR Commercial Riser - Threaded	2" (50mm)	6A090CS000	2CRB	\$ 1,069.38
Model CR Commercial Riser - Grooved	2" (50mm)	6A100CS000	2CRGB	\$ 1,069.38
Model CR Commercial Riser - Grooved	2-1/2" (65mm)	6A120CS010	25CRGB	\$ 1,191.90
Model CR Commercial Riser - Grooved	3" (80mm)	6A140CS010	3CRGB	\$ 1,247.50
Model CR Commercial Riser - Grooved	4" (100mm)	6A160CS020	4CRGB	\$ 1,514.93
Model CR Commercial Riser - Grooved	6" (150mm)	6A180CS020	6CRGB	\$ 1,670.89
Model CR Commercial Riser - Grooved	8" (200mm)	6A190CS020	8CRGB	\$ 1,849.09
<b>CR COMMERCIAL RISER WITH TEST &amp; DRAIN 2.8K</b>				
Model CR Commercial Riser w- Test&Drain - Threaded	1-1/2" (40mm)	6A080CS030	15CR28	\$ 1,250.00
Model CR Commercial Riser w- Test&Drain - Threaded	2" (50mm)	6A090CS030	2CR28	\$ 1,250.00
Model CR Commercial Riser w- Test&Drain - Grooved	2" (50mm)	6A100CS030	2CRG28	\$ 1,200.00
<b>CR COMMERCIAL RISER WITH TEST &amp; DRAIN 4.2K</b>				
Model CR Commercial Riser w- Test&Drain - Threaded	1-1/2" (40mm)	6A080CS040	15CR42	\$ 1,250.00
Model CR Commercial Riser w- Test&Drain - Threaded	2" (50mm)	6A090CS040	2CR42	\$ 1,250.00
Model CR Commercial Riser w- Test&Drain - Grooved	2" (50mm)	6A100CS040	2CRG42	\$ 1,200.00
Model CR Commercial Riser w- Test&Drain - Grooved	2-1/2" (65mm)	6A120CS060	25CRG42	\$ 1,400.00
Model CR Commercial Riser w- Test&Drain - Grooved	3" (80mm)	6A140CS060	3CRG42	\$ 1,400.00
<b>CR COMMERCIAL RISER WITH TEST &amp; DRAIN 5.6K</b>				
Model CR Commercial Riser w- Test&Drain - Threaded	1-1/2" (40mm)	6A080CS050	15CR56	\$ 1,250.00
Model CR Commercial Riser w- Test&Drain - Threaded	2" (50mm)	6A090CS050	2CR56	\$ 1,250.00
Model CR Commercial Riser w- Test&Drain - Grooved	2" (50mm)	6A100CS050	2CRG56	\$ 1,200.00
Model CR Commercial Riser w- Test&Drain - Grooved	2-1/2" (65mm)	6A120CS070	25CRG56	\$ 1,400.00
Model CR Commercial Riser w- Test&Drain - Grooved	3" (80mm)	6A140CS070	3CRG56	\$ 1,400.00
Model CR Commercial Riser w- Test&Drain - Grooved	4" (100mm)	6A160CS100	4CRG56	\$ 1,800.00
Model CR Commercial Riser w- Test&Drain - Grooved	6" (150mm)	6A180CS100	6CRG56	\$ 1,850.00
Model CR Commercial Riser w- Test&Drain - Grooved	8" (200mm)	6A190CS100	8CRG6	\$ 2,300.00
<b>CR COMMERCIAL RISER WITH TEST &amp; DRAIN 8.0K</b>				
Model CR Commercial Riser w- Test&Drain - Grooved	2-1/2" (65mm)	6A120CS080	25CRG80	\$ 1,400.00
Model CR Commercial Riser w- Test&Drain - Grooved	3" (80mm)	6A140CS080	3CRG80	\$ 1,400.00
Model CR Commercial Riser w- Test&Drain - Grooved	4" (100mm)	6A160CS110	4CRG80	\$ 1,800.00
Model CR Commercial Riser w- Test&Drain - Grooved	6" (150mm)	6A180CS110	6CRG80	\$ 1,850.00
Model CR Commercial Riser w- Test&Drain - Grooved	8" (200mm)	6A190CS110	8CRG80	\$ 2,300.00
<b>CR COMMERCIAL RISER WITH TEST &amp; DRAIN 11.2K</b>				
Model CR Commercial Riser w- Test&Drain - Grooved	2-1/2" (65mm)	6A120CS090	25CRG112	\$ 1,400.00
Model CR Commercial Riser w- Test&Drain - Grooved	3" (80mm)	6A140CS090	3CRG112	\$ 1,400.00
Model CR Commercial Riser w- Test&Drain - Grooved	4" (100mm)	6A160CS120	4CRG112	\$ 1,800.00
Model CR Commercial Riser w- Test&Drain - Grooved	6" (150mm)	6A180CS120	6CRG112	\$ 1,850.00
Model CR Commercial Riser w- Test&Drain - Grooved	8" (200mm)	6A190CS120	8CRG112	\$ 2,300.00
<b>CR COMMERCIAL RISER WITH TEST &amp; DRAIN 16.8K</b>				
Model CR Commercial Riser w- Test&Drain - Grooved	4" (100mm)	6A160CS130	4CRG168	\$ 1,800.00
Model CR Commercial Riser w- Test&Drain - Grooved	6" (150mm)	6A180CS130	6CRG168	\$ 1,850.00
Model CR Commercial Riser w- Test&Drain - Grooved	8" (200mm)	6A190CS130	8CRG168	\$ 2,300.00
<b>PRESSURE RELIEF KITS</b>				
Pressure Relief Trim - 175 PSI	All Sizes	6501203550	PRT175	\$ 200.00
Pressure Relief Trim - 185 PSI	All Sizes	6501203545	PRT185	\$ 200.00
Pressure Relief Trim - 210 PSI	All Sizes	6501213550	PRT210	\$ 200.00
Pressure Relief Trim - 260 PSI	All Sizes	6501203546	PRT260	\$ 300.00
Pressure Relief Trim - 310 PSI	All Sizes	6501203547	PRT310	\$ 300.00



Model CR Commercial Riser

- For Commercial Applications
- See Bulletin 617



Model CR Commercial Riser with Test & Drain Riser with Test & Drain

- For Commercial Applications
- See Bulletin 617

Part Name	Size	Part Number	Short Code	List Price
<b>COMMERCIAL RISER WITH BASIC TRIM &amp; PRV 175 PSI</b>				
Model CR Commercial Riser - Threaded	1-1/2" (40mm)	6A080CS001	15CRBP	\$ 1,369.38
Model CR Commercial Riser - Threaded	2" (50mm)	6A090CS001	2CRBP	\$ 1,369.38
Model CR Commercial Riser - Grooved	2" (50mm)	6A100CS001	2CRGBP	\$ 1,369.38
Model CR Commercial Riser - Grooved	2-1/2" (65mm)	6A120CS011	25CRGBP	\$ 1,491.90
Model CR Commercial Riser - Grooved	3" (80mm)	6A140CS011	3CRGBP	\$ 1,547.50
Model CR Commercial Riser - Grooved	4" (100mm)	6A160CS021	4CRGBP	\$ 1,814.93
Model CR Commercial Riser - Grooved	6" (150mm)	6A180CS021	6CRGBP	\$ 1,970.89
Model CR Commercial Riser - Grooved	8" (200mm)	6A190CS021	8CRGBP	\$ 2,149.09
<b>CR COMMERCIAL RISER WITH TEST &amp; DRAIN &amp; PRV K2.8 175 PSI</b>				
Model CR Commercial Riser w- Test&Drain - Threaded	1-1/2" (40mm)	6A080CS031	15CR28P	\$ 1,550.00
Model CR Commercial Riser w- Test&Drain - Threaded	2" (50mm)	6A090CS031	2CR28P	\$ 1,550.00
Model CR Commercial Riser w- Test&Drain - Grooved	2" (50mm)	6A100CS031	2CRG28P	\$ 1,500.00
<b>CR COMMERCIAL RISER WITH TEST &amp; DRAIN &amp; PRV K4.2 175 PSI</b>				
Model CR Commercial Riser w- Test&Drain - Threaded	1-1/2" (40mm)	6A080CS041	15CR42P	\$ 1,550.00
Model CR Commercial Riser w- Test&Drain - Threaded	2" (50mm)	6A090CS041	2CR42P	\$ 1,550.00
Model CR Commercial Riser w- Test&Drain - Grooved	2" (50mm)	6A100CS041	2CRG42P	\$ 1,500.00
Model CR Commercial Riser w- Test&Drain - Grooved	2-1/2" (65mm)	6A120CS061	25CRG42P	\$ 1,700.00
Model CR Commercial Riser w- Test&Drain - Grooved	3" (80mm)	6A140CS061	3CRG42P	\$ 1,700.00
<b>CR COMMERCIAL RISER WITH TEST &amp; DRAIN &amp; PRV K5.6 175 PSI</b>				
Model CR Commercial Riser w- Test&Drain - Threaded	1-1/2" (40mm)	6A080CS051	15CR56P	\$ 1,550.00
Model CR Commercial Riser w- Test&Drain - Threaded	2" (50mm)	6A090CS051	2CR56P	\$ 1,550.00
Model CR Commercial Riser w- Test&Drain - Grooved	2" (50mm)	6A100CS051	2CRG56P	\$ 1,500.00
Model CR Commercial Riser w- Test&Drain - Grooved	2-1/2" (65mm)	6A120CS071	25CRG56P	\$ 1,700.00
Model CR Commercial Riser w- Test&Drain - Grooved	3" (80mm)	6A140CS071	3CRG56P	\$ 1,700.00
Model CR Commercial Riser w- Test&Drain - Grooved	4" (100mm)	6A160CS101	4CRG56P	\$ 2,100.00
Model CR Commercial Riser w- Test&Drain - Grooved	6" (150mm)	6A180CS101	6CRG56P	\$ 2,150.00
Model CR Commercial Riser w- Test&Drain - Grooved	8" (200mm)	6A190CS101	8CRG6P	\$ 2,600.00
<b>CR COMMERCIAL RISER WITH TEST &amp; DRAIN &amp; PRV K8.0 175 PSI</b>				
Model CR Commercial Riser w- Test&Drain - Grooved	2-1/2" (65mm)	6A120CS081	25CRG80P	\$ 1,700.00
Model CR Commercial Riser w- Test&Drain - Grooved	3" (80mm)	6A140CS081	3CRG80P	\$ 1,700.00
Model CR Commercial Riser w- Test&Drain - Grooved	4" (100mm)	6A160CS111	4CRG80P	\$ 2,100.00
Model CR Commercial Riser w- Test&Drain - Grooved	6" (150mm)	6A180CS111	6CRG80P	\$ 2,150.00
Model CR Commercial Riser w- Test&Drain - Grooved	8" (200mm)	6A190CS111	8CRG80P	\$ 2,600.00
<b>CR COMMERCIAL RISER WITH TEST &amp; DRAIN &amp; PRV K11.2 175 PSI</b>				
Model CR Commercial Riser w- Test&Drain - Grooved	2-1/2" (65mm)	6A120CS091	25CRG112P	\$ 1,700.00
Model CR Commercial Riser w- Test&Drain - Grooved	3" (80mm)	6A140CS091	3CRG112P	\$ 1,700.00
Model CR Commercial Riser w- Test&Drain - Grooved	4" (100mm)	6A160CS121	4CRG112P	\$ 2,100.00
Model CR Commercial Riser w- Test&Drain - Grooved	6" (150mm)	6A180CS121	6CRG112P	\$ 2,150.00
Model CR Commercial Riser w- Test&Drain - Grooved	8" (200mm)	6A190CS121	8CRG112P	\$ 2,600.00
<b>CR COMMERCIAL RISER WITH TEST &amp; DRAIN &amp; PRV K16.8 175 PSI</b>				
Model CR Commercial Riser w- Test&Drain - Grooved	4" (100mm)	6A160CS131	4CRG168P	\$ 2,100.00
Model CR Commercial Riser w- Test&Drain - Grooved	6" (150mm)	6A180CS131	6CRG168P	\$ 2,150.00
Model CR Commercial Riser w- Test&Drain - Grooved	8" (200mm)	6A190CS131	8CRG168P	\$ 2,600.00
<b>PRESSURE RELIEF KITS</b>				
Pressure Relief Trim - 175 PSI	All Sizes	6501203550	PRT175	\$ 200.00
Pressure Relief Trim - 185 PSI	All Sizes	6501203545	PRT185	\$ 200.00
Pressure Relief Trim - 210 PSI	All Sizes	6501213550	PRT210	\$ 200.00
Pressure Relief Trim - 260 PSI	All Sizes	6501203546	PRT260	\$ 300.00
Pressure Relief Trim - 310 PSI	All Sizes	6501203547	PRT310	\$ 300.00