



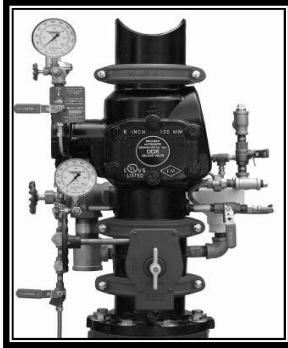
**DDX Deluge
Valve**

- See Bulletins 518 & 519 - DDX Deluge Valve
- See Bulletin 749 - Single Interlock
- See Bulletins 750 & 751 - Double Interlock

Description	Part Number	Short Code	List Price
MODEL DDX - DELUGE VALVES FULLY ASSEMBLED - ELECTRIC TRIM			
2" Electric Release	6522904110	2DDXFEN	\$ 10,751.15
2" Electric Release w/Control Valve	6522908110	2DDXFEVN	\$ 11,909.30
2-1/2" Electric Release	6521904110	25DDXFEN	\$ 10,751.15
2-1/2" Electric Release w/Control Valve	6521908110	25DDXFEVN	\$ 11,909.30
3" Electric Release	6523904110	3DDXFEN	\$ 11,081.90
3" Electric Release w/Control Valve	6523908110	3DDXFEVN	\$ 12,074.15
76MM Electric Release	6525905110	76DDXFEN	\$ 11,081.90
4" Electric Release	6524904110	4DDXFEN	\$ 11,094.50
4" Electric Release w/Control Valve	6524908110	4DDXFEVN	\$ 12,243.20
6" Electric Release	6526904110	6DDXFEN	\$ 12,333.50
6" Electric Release w/Control Valve	6526908110	6DDXFEVN	\$ 13,441.05
165MM, DDX, Valve, w/Electric	6527905110	165DDXFEN	\$ 11,270.00
8" Electric Release	6528904110	8DDXFEN	\$ 16,579.70
8" Electric Release w/Control Valve	6528908110	8DDXFEVN	\$ 18,809.70
MODEL DDX - DELUGE VALVES FULLY ASSEMBLED - WET PILOT LINE TRIM			
2" Wet Pilot Line	6522704010	2DDXFWN	\$ 9,263.30
2" Wet Pilot Line w/Control Valve	6522708010	2DDXFWVN	\$ 10,420.40
2-1/2" Wet Pilot Line	6521704010	25DDXFWN	\$ 9,263.30
2-1/2" Wet Pilot Line w/Control Valve	6521708010	25DDXFWVN	\$ 10,420.40
3" Wet Pilot Line	6523704010	3DDXFWN	\$ 9,594.05
3" Wet Pilot Line w/Control Valve	6523708010	3DDXFWVN	\$ 10,751.15
76MM Wet Pilot Line	6525705010	76DDXFWN	\$ 9,594.05
4" Wet Pilot Line	6524704010	4DDXFWN	\$ 9,824.00
4" Wet Pilot Line w/Control Valve	6524708010	4DDXFWVN	\$ 10,973.75
6" Wet Pilot Line	6526704010	6DDXFWN	\$ 11,063.00
6" Wet Pilot Line w/Control Valve	6526708010	6DDXFWVN	\$ 12,674.75
165MM, DDX, Valve, w/Wet Pilot	6527705010	165DDXFWN	\$ 10,561.00
8" Wet Pilot Line	6528704010	8DDXFWN	\$ 16,124.00
8" Wet Pilot Line w/Control Valve	6528708010	8DDXFWVN	\$ 19,461.95
MODEL DDX - DELUGE VALVES FULLY ASSEMBLED - DRY PILOT LINE TRIM			
2" Dry Pilot Line	6522804010	2DDXFDPN	\$ 10,917.05
2" Dry Pilot Line w/Control Valve	6522808010	2DDXFDPVN	\$ 12,074.15
2-1/2" Dry Pilot Line	6521804010	25DDXFDPN	\$ 10,917.05
2-1/2" Dry Pilot Line w/Control Valve	6521808010	25DDXFDPVN	\$ 12,074.15
3" Dry Pilot Line	6523804010	3DDXFDPN	\$ 11,247.80
3" Dry Pilot Line w/Control Valve	6523808010	3DDXFDPVN	\$ 12,404.90
76MM Dry Pilot Line	6525805010	76DDXFDPN	\$ 10,736.00
4" Dry Pilot Line	6524804010	4DDXFDPN	\$ 11,404.25
4" Dry Pilot Line w/Control Valve	6524808010	4DDXFDPVN	\$ 12,555.05
6" Dry Pilot Line	6526804010	6DDXFDPN	\$ 12,644.30
6" Dry Pilot Line w/Control Valve	6526808010	6DDXFDPVN	\$ 14,255.00
165MM, DDX, Valve, w/ Dry Pilot line	6527805010	165DDXFDPN	\$ 12,066.00
8" Dry Pilot Line	6528804010	8DDXFDPN	\$ 16,883.15
8" Dry Pilot Line w/Control Valve	6528808010	8DDXFDPVN	\$ 20,523.50

Please note:

250 psi and ULC Listed also available upon request



DDX Deluge Valve

• See Bulletins 518 & 519 -
DDX Deluge Valve

• See Bulletin 749 - Single
Interlock

• See Bulletins 750 & 751 -
Double Interlock

• See Bulletins 720 & 719 -
Double Interlock

Description	Part Number	Short Code	List Price
MODEL DDX - DELUGE VALVE ONLY (GROOVED/GROOVED)			
Model DDX - 2"	6103022000	2DDX	\$ 5,125.05
Model DDX - 2-1/2"	6103022500	25DDX	\$ 5,125.05
Model DDX - 3"	6103030000	3DDX	\$ 5,290.95
Model DDX - 76MM	6103027600	76DDXMM	\$ 5,125.05
Model DDX- 4"	6103040026	4DDX	\$ 5,407.50
Model DDX - 6"	6103060024	6DDX	\$ 6,647.55
Model 165MM	6103060028	165DDXMM	\$ 6,647.55
Model DDX - 8"	6103080001	8DDX	\$ 11,042.85
MODEL DDX - DELUGE VALVE ONLY (FLANGE/FLANGE)			
Model DDX- 4"	6103040045	4DDXF	\$ 5,407.50
Model DDX - 6"	6103060046	6DDXF	\$ 6,647.55
Model DDX - 8"	6103080016	8DDXF	\$ 11,042.85
MODEL DDX - DELUGE VALVE ONLY (FLANGE/GROOVED)			
Model DDX- 4"	6103040044	4DDXFG	\$ 5,407.50
Model DDX - 6"	6103060045	6DDXFG	\$ 6,647.55
Model 165MM	6103060052	165DDXFG	\$ 6,647.55
MODEL H - 1-1/2" DELUGE / PREACTION RISER ASSEMBLIES & TRIMS			
Model H(65030030001)	6503003001	15D	\$ 6,671.70
Single Interlock Trim 1-1/2"	6501200112	15PTSL	\$ 1,386.00
Double Interlock Trim 1-1/2"	6503003405	15PTDL	\$ 3,900.95
Solenoid Valve Repair Kit	6999991583	SVRK	\$ 2,466.45
DELUGE TRIM ONLY — SEGMENTALLY ASSEMBLED			
Wet Pilot Line 2", 2-1/2" & 3"	6520702010	25DDXWPN	\$ 3,263.60
Wet Pilot Line 4", 6" & 8"	6520703010	4DDXWPN	\$ 3,263.60
Dry Pilot Line 2", 2-1/2" & 3"	6520802010	25DDXDPPN	\$ 4,889.00
Dry Pilot Line 4", 6" & 8"	6520803010	4DDXDPPN	\$ 4,886.90
Electric Release 2", 2-1/2" & 3"	6520902110	25DDXEPN	\$ 4,569.80
Electric Release 4", 6" & 8"	6520903110	4DDXEPN	\$ 4,568.75
DELUGE TRIM ONLY — INDIVIDUAL PARTS			
Wet Pilot Line 2", 2-1/2" & 3"	6520700010	25DDXWLN	\$ 3,096.65
Wet Pilot Line 4", 6" & 8"	6520701010	4DDXWLN	\$ 3,096.65
Dry Pilot Line 2", 2-1/2" & 3"	6520800010	25DDXDPLN	\$ 4,579.25
Dry Pilot Line 4", 6" & 8"	6520801010	4DDXDPLN	\$ 4,579.25
Electric Release 2", 2-1/2" & 3"	6520900110	25DDXELN	\$ 4,240.10
Electric Release 4", 6" & 8"	6520901110	4DDXELN	\$ 3,740.10



**DDX-SS Deluge Valve -
4", 6" & 8" Sizes**

- See Bulletins 516 & 517
- 316 Stainless Steel - No Coating to Chip, Peel or Flake
- All DDX-SS Trim sets are available in 304 or 316 stainless steel versions
- Available DDX-SS Deluge Valve trim sets:
 - Wet Pilot Trim
 - Dry Pilot Trim
 - Electric Actuation Trim

Description	Part Number	Short Code	List Price
MODEL DDX-SS - DELUGE VALVE ONLY - GROOVED BY GROOVED			
4" DDX SS - Grooved /Grooved	6103040037	4DDXSS	\$ 13,370.57
6" DDX SS - Grooved /Grooved	6103060037	6DDXSS	\$ 15,801.59
8" DDX SS - Grooved /Grooved	6103080002	8DDXSS	\$ 17,017.09
MODEL DDX-SS - DELUGE VALVE ONLY - FLANGE BY FLANGE CLASS 150			
4" DDX SS - Flange/Flange Class 150	6103040039	4DDXSSF150	\$ 15,193.83
6" DDX SS - Flange/Flange Class 150	6103060039	6DDXSSF150	\$ 19,448.10
8" DDX SS - Flange/Flange Class 150	6103080005	8DDXSSF150	\$ 23,702.37
MODEL DDX-SS - DELUGE VALVE ONLY - FLANGE BY FLANGE CLASS 300			
4" DDX SS - Flange/Flange Class 300	6103040040	4DDXSSF300	\$ 15,193.83
6" DDX SS - Flange/Flange Class 300	6103060040	6DDXSSF300	\$ 19,448.10
8" DDX SS - Flange/Flange Class 300	6103080006	8DDXSSF300	\$ 23,702.37

Description	Part Number	Short Code	List Price
MODEL DDX-SS - FULLY ASSEMBLED - WET PILOT LINE 304 TRIM			
4" DDX-SS - Grooved/Grooved w/o Control Valve	6505041201	4DDXSSFW	\$ 24,310.13
4" DDX-SS - Flg/Flg Class 150 w/o Control Valve	6505041202		\$ 26,741.14
4" DDX-SS - Flg/Flg Class 300 w/o Control Valve	6505041203		\$ 26,741.14
6" DDX-SS - Grooved/Grooved w/o Control Valve	6505061201	6DDXSSFW	\$ 26,741.14
6" DDX-SS - Flg/Flg Class 150 w/o Control Valve	6505061202		\$ 30,387.66
6" DDX-SS - Flg/Flg Class 300 w/o Control Valve	6505061203		\$ 30,387.66
8" DDX-SS - Grooved/Grooved w/o Control Valve	6505081201	8DDXSSFW	\$ 27,956.65
8" DDX-SS - Flg/Flg Class 150 w/o Control Valve	6505081202		\$ 35,249.69
8" DDX-SS - Flg/Flg Class 300 w/o Control Valve	6505081203		\$ 35,249.69
DELUGE 304 TRIM ONLY — SEGMENTALLY ASSEMBLED			
Wet Pilot Line 4", 6" & 8"	6503001025	8DDXSSWP	\$ 9,967.16
DELUGE 304 TRIM ONLY - INDIVIDUAL PARTS			
Wet Pilot Line 4", 6" & 8"	6503001024	8DDXSSWL	\$ 9,116.30

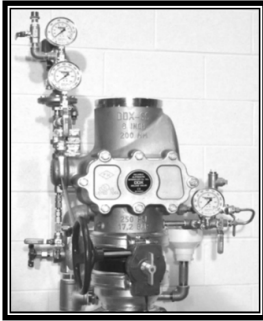


**DDX-SS Deluge Valve -
4", 6" & 8" Sizes**

- See Bulletins 516 & 517
- Dry Pilot Line 304 Trim

Description	Part Number	Short Code	List Price
MODEL DDX-SS - FULLY ASSEMBLED - DRY PILOT LINE 304 TRIM			
4" DDX-SS - Grooved/Grooved w/o Control Valve	6505041206	4DDXSSFDP	\$ 27,956.65
4" DDX-SS - Flg/Flg Class 150 w/o Control Valve	6505041207		\$ 30,387.66
4" DDX-SS - Flg/Flg Class 300 w/o Control Valve	6505041208		\$ 30,387.66
6" DDX-SS - Grooved/Grooved w/o Control Valve	6505061206	6DDXSSFDP	\$ 31,603.16
6" DDX-SS - Flg/Flg Class 150 w/o Control Valve	6505061207		\$ 35,249.69
6" DDX-SS - Flg/Flg Class 300 w/o Control Valve	6505061208		\$ 35,249.69
8" DDX-SS - Grooved/Grooved w/o Control Valve	6505081206	8DDXSSFDP	\$ 32,818.67
8" DDX-SS - Flg/Flg Class 150 w/o Control Valve	6505081207		\$ 38,896.20
8" DDX-SS - Flg/Flg Class 300 w/o Control Valve	6505081208		\$ 38,896.20
DELUGE 304 TRIM ONLY — SEGMENTALLY ASSEMBLED			
Dry Pilot Line 4", 6" & 8"	6503001132	8DDXSSDPP	\$ 14,586.08
DELUGE 304 TRIM ONLY - INDIVIDUAL PARTS			
Dry Pilot Line 4", 6" & 8"	6503001131	8DDXSSDPL	\$ 13,370.57

Description	Part Number	Short Code	List Price
MODEL DDX-SS - FULLY ASSEMBLED - DRY PILOT LINE 304 TRIM - CANADIAN			
4" DDX-SS - Grooved/Grooved w/o Control Valve	6505041209		\$ 27,956.65
4" DDX-SS - Flg/Flg Class 150 w/o Control Valve	6505041210		\$ 30,387.66
4" DDX-SS - Flg/Flg Class 300 w/o Control Valve	6505041211		\$ 30,387.66
6" DDX-SS - Grooved/Grooved w/o Control Valve	6505061209		\$ 30,387.66
6" DDX-SS - Flg/Flg Class 150 w/o Control Valve	6505061210		\$ 35,249.69
6" DDX-SS - Flg/Flg Class 300 w/o Control Valve	6505061211		\$ 35,249.69
8" DDX-SS - Grooved/Grooved w/o Control Valve	6505081209		\$ 31,603.16
8" DDX-SS - Flg/Flg Class 150 w/o Control Valve	6505081210		\$ 38,896.20
8" DDX-SS - Flg/Flg Class 300 w/o Control Valve	6505081211		\$ 38,896.20
DELUGE 304 TRIM ONLY — SEGMENTALLY ASSEMBLED - CANADIAN			
Dry Pilot Line 4", 6" & 8"	6503001134		\$ 14,586.08
DELUGE 304 TRIM ONLY - INDIVIDUAL PARTS - CANADIAN			
Dry Pilot Line 4", 6" & 8"	6503001133		\$ 13,370.57



**DDX-SS Deluge Valve -
4", 6" & 8" Sizes**

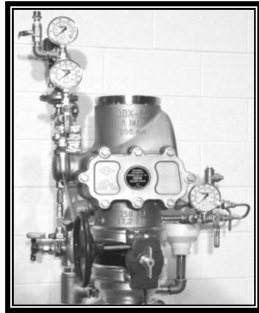
- See Bulletins 516 & 517
- Dry Pilot Line 316 Trim

Description	Part Number	Short Code	List Price
MODEL DDX-SS - FULLY ASSEMBLED - DRY PILOT LINE 316 TRIM			
4" DDX-SS - Grooved/Grooved w/o Control Valve	6505042206		\$ 30,387.66
4" DDX-SS - Flg/Flg Class 150 w/o Control Valve	6505042207		\$ 32,818.67
4" DDX-SS - Flg/Flg Class 300 w/o Control Valve	6505042208		\$ 32,818.67
6" DDX-SS - Grooved/Grooved w/o Control Valve	6505062206		\$ 34,034.18
6" DDX-SS - Flg/Flg Class 150 w/o Control Valve	6505062207		\$ 36,465.19
6" DDX-SS - Flg/Flg Class 300 w/o Control Valve	6505062208		\$ 36,465.19
8" DDX-SS - Grooved/Grooved w/o Control Valve	6505082206		\$ 34,034.18
8" DDX-SS - Flg/Flg Class 150 w/o Control Valve	6505082207		\$ 41,327.21
8" DDX-SS - Flg/Flg Class 300 w/o Control Valve	6505082208		\$ 41,327.21
DELUGE 316 TRIM ONLY — SEGMENTALLY ASSEMBLED			
Dry Pilot Line 4", 6" & 8"	6503001136		\$ 17,017.09
DELUGE 316 TRIM ONLY - INDIVIDUAL PARTS			
Dry Pilot Line 4", 6" & 8"	6503001135		\$ 15,801.59

Description	Part Number	Short Code	List Price
MODEL DDX-SS - FULLY ASSEMBLED - DRY PILOT LINE 316 TRIM - CANADIAN			
4" DDX-SS - Grooved/Grooved w/o Control Valve	6505042209		\$ 31,603.16
4" DDX-SS - Flg/Flg Class 150 w/o Control Valve	6505042210		\$ 32,818.67
4" DDX-SS - Flg/Flg Class 300 w/o Control Valve	6505042211		\$ 32,818.67
6" DDX-SS - Grooved/Grooved w/o Control Valve	6505062209		\$ 34,034.18
6" DDX-SS - Flg/Flg Class 150 w/o Control Valve	6505062210		\$ 36,465.19
6" DDX-SS - Flg/Flg Class 300 w/o Control Valve	6505062211		\$ 36,465.19
8" DDX-SS - Grooved/Grooved w/o Control Valve	6505082209		\$ 34,034.18
8" DDX-SS - Flg/Flg Class 150 w/o Control Valve	6505082215		\$ 41,327.21
8" DDX-SS - Flg/Flg Class 300 w/o Control Valve	6505082216		\$ 41,327.21
DELUGE 316 TRIM ONLY — SEGMENTALLY ASSEMBLED - CANADIAN			
Dry Pilot Line 4", 6" & 8"	6503001138		\$ 17,017.09
DELUGE 316 TRIM ONLY - INDIVIDUAL PARTS - CANADIAN			
Dry Pilot Line 4", 6" & 8"	6503001137		\$ 15,801.59

DDX-SS Features:

- Now available in 4", 6", and 8"
- Deluge trims are available in 316 SS, 304 SS, & Black Iron Pipe for wet/dry pilot and electric actuation with optional explosion proof components
- Improved external reset and differential latch-type clapper
- Pressure rating of 250 psi (17,2 bar)
- Either flanged or grooved ends
- cULus Listed and FM Approved



DDX-SS Deluge Valve - 4", 6" & 8" Sizes

- See Bulletins 516 & 517
- Electric Actuation Deluge Trim
- Explosion Proof Solenoid Available Upon Request

Description	Part Number	Short Code	List Price
MODEL DDX-SS - FULLY ASSEMBLED - ELECTRIC 304 TRIM			
4" DDX-SS - Grooved/Grooved w/o Control Valve	6505041212	4DDXSSFE	\$ 25,525.64
4" DDX-SS - Flg/Flg Class 150 w/o Control Valve	6505041213		\$ 27,956.65
4" DDX-SS - Flg/Flg Class 300 w/o Control Valve	6505041214		\$ 27,956.65
6" DDX-SS - Grooved/Grooved w/o Control Valve	6505061212	6DDXSSFE	\$ 27,956.65
6" DDX-SS - Flg/Flg Class 150 w/o Control Valve	6505061213		\$ 31,603.16
6" DDX-SS - Flg/Flg Class 300 w/o Control Valve	6505061214		\$ 31,603.16
8" DDX-SS - Grooved/Grooved w/o Control Valve	6505081212	8DDXSSFE	\$ 29,172.15
8" DDX-SS - Flg/Flg Class 150 w/o Control Valve	6505081213		\$ 36,465.19
8" DDX-SS - Flg/Flg Class 300 w/o Control Valve	6505081214		\$ 36,465.19
ELECTRIC 304 TRIM ONLY — SEGMENTALLY ASSEMBLED			
Dry Pilot Line 4", 6" & 8"	6503001530	8DDXSSEP	\$ 12,155.06
ELECTRIC 304 TRIM ONLY - INDIVIDUAL PARTS			
Dry Pilot Line 4", 6" & 8"	6503001529	8DDXSSEL	\$ 10,939.56

Description	Part Number	Short Code	List Price
MODEL DDX-SS - FULLY ASSEMBLED - ELECTRIC 316 TRIM			
4" DDX-SS - Grooved/Grooved w/o Control Valve	6505042212		\$ 26,741.14
4" DDX-SS - Flg/Flg Class 150 w/o Control Valve	6505042213		\$ 29,172.15
4" DDX-SS - Flg/Flg Class 300 w/o Control Valve	6505042214		\$ 29,172.15
6" DDX-SS - Grooved/Grooved w/o Control Valve	6505062212		\$ 30,387.66
6" DDX-SS - Flg/Flg Class 150 w/o Control Valve	6505062213		\$ 34,034.18
6" DDX-SS - Flg/Flg Class 300 w/o Control Valve	6505062214		\$ 34,034.18
8" DDX-SS - Grooved/Grooved w/o Control Valve	6505082212		\$ 31,603.16
8" DDX-SS - Flg/Flg Class 150 w/o Control Valve	6505082213		\$ 38,896.20
8" DDX-SS - Flg/Flg Class 300 w/o Control Valve	6505082214		\$ 38,896.20
ELECTRIC 316 TRIM ONLY — SEGMENTALLY ASSEMBLED			
Dry Pilot Line 4", 6" & 8"	6503001536		\$ 13,370.57
ELECTRIC 316 TRIM ONLY - INDIVIDUAL PARTS			
Dry Pilot Line 4", 6" & 8"	6503001535		\$ 12,155.06

DDX-SS Features:

- Now available in 4", 6", and 8"
- Deluge trims are available in 316 SS, 304 SS, & Black Iron Pipe for wet/dry pilot and electric actuation with optional explosion proof components
- Improved external reset and differential latch-type clapper
- Pressure rating of 250 psi (17.2 bar)
- Either flanged or grooved ends
- cULus Listed and FM Approved

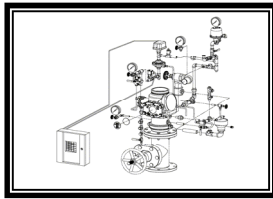


**Preaction
Systems with
our DDX Valve**

**SPECIAL HAZARDS
SPECIAL SYSTEMS**

• See Bulletins 749, 750 & 751

Description	Part Number	Short Code	List Price
MODEL DDX - DELUGE VALVE FULLY ASSEMBLED - ELECTRIC - SINGLE INTERLOCK			
2" Electric Single Interlock	6522C04110	2DDXFSN	\$ 11,081.90
2" Electric Single Interlock w/Control Valve	6522C08110	2DDXFSVN	\$ 12,074.15
2-1/2" Electric Single Interlock	6521C04110	25DDXFSN	\$ 11,081.90
2-1/2" Electric Single Interlock w/Control Valve	6521C08110	25DDXFSVN	\$ 12,074.15
3" Electric Single Interlock	6523C04110	3DDXFSN	\$ 11,412.65
3" Electric Single Interlock w/Control Valve	6523C08110	3DDXFSVN	\$ 12,404.90
4" Electric Single Interlock	6524C04110	4DDXFSN	\$ 11,578.55
4" Electric Single Interlock w/Control Valve	6524C08110	4DDXFSVN	\$ 12,570.80
6" Electric Single Interlock	6526C04110	6DDXFSN	\$ 13,810.85
6" Electric Single Interlock w/Control Valve	6526C08110	6DDXFSVN	\$ 14,223.50
8" Electric Single Interlock	6528C04110	8DDXFSN	\$ 16,730.90
8" Electric Single Interlock w/Control Valve	6528C08110	8DDXFSVN	\$ 19,765.40
MODEL DDX - DELUGE VALVE FULLY ASSEMBLED - WET PILOT LINE - SINGLE INTERLOCK			
2" Single Interlock - Wet Pilot Line	6522B04010	2DDXFWSN	\$ 9,594.05
2" Single Interlock - Wet Pilot Line w/Control Valve	6522B08010	2DDXFWSVN	\$ 11,578.55
2-1/2" Single Interlock - Wet Pilot Line	6521B04010	25DDXFWSN	\$ 9,594.05
2-1/2" Single Interlock - Wet Pilot Line w/Control Valve	6521B08010	25DDXFWSVN	\$ 11,578.55
3" Single Interlock - Wet Pilot Line	6523B04010	3DDXFWSN	\$ 9,924.80
3" Single Interlock - Wet Pilot Line w/Control Valve	6523B08010	3DDXFWSVN	\$ 11,247.80
4" Single Interlock - Wet Pilot Line	6524B04010	4DDXFWSN	\$ 10,172.60
4" Single Interlock - Wet Pilot Line w/Control Valve	6524B08010	4DDXFWSVN	\$ 11,247.80
6" Single Interlock - Wet Pilot Line	6526B04010	6DDXFWSN	\$ 11,412.65
6" Single Interlock - Wet Pilot Line w/Control Valve	6526B08010	6DDXFWSVN	\$ 12,983.45
8" Single Interlock - Wet Pilot Line	6528B04010	8DDXFWSN	\$ 15,972.80
8" Single Interlock - Wet Pilot Line w/Control Valve	6528B08010	8DDXFWSVN	\$ 18,855.05
MODEL DDX - DELUGE VALVE FULLY ASSEMBLED - DRY PILOT LINE - SINGLE INTERLOCK			
2" Single Interlock - Dry Pilot Line	6522A04010	2DDXFDSN	\$ 11,247.80
2" Single Interlock - Dry Pilot Line w/Control Valve	6522A08010	2DDXFDSVN	\$ 12,404.90
2-1/2" Single Interlock - Dry Pilot Line	6521A04010	25DDXFDSN	\$ 11,247.80
2-1/2" Single Interlock - Dry Pilot Line w/Control Valve	6521A08010	25DDXFDSVN	\$ 12,404.90
3" Single Interlock - Dry Pilot Line	6523A04010	3DDXFDSN	\$ 11,578.55
3" Single Interlock - Dry Pilot Line w/Control Valve	6523A08010	3DDXFDSVN	\$ 12,735.65
4" Single Interlock - Dry Pilot Line	6524A04010	4DDXFDSN	\$ 11,743.40
4" Single Interlock - Dry Pilot Line w/Control Valve	6524A08010	4DDXFDSVN	\$ 12,735.65
6" Single Interlock - Dry Pilot Line	6526A04010	6DDXFDSN	\$ 12,983.45
6" Single Interlock - Dry Pilot Line w/Control Valve	6526A08010	6DDXFDSVN	\$ 14,637.20
8" Single Interlock - Dry Pilot Line	6528A04010	8DDXFDSN	\$ 17,034.35
8" Single Interlock - Dry Pilot Line w/Control Valve	6528A08010	8DDXFDSVN	\$ 20,523.50



**Preaction
Systems with
our DDX Valve**

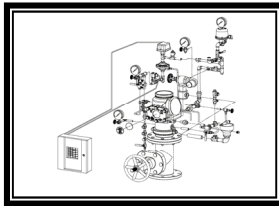
**SPECIAL HAZARDS/
SPECIAL SYSTEMS**



**DDX Double Interlock
Preaction System -
Type PL**

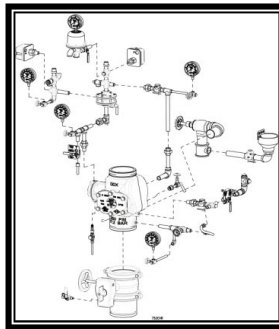
• See Bulletin 752

Description	Part Number	Short Code	List Price
MODEL DDX - DELUGE VALVE FULLY ASSEMBLED - DOUBLE INTERLOCK - TYPE D			
2" Double Type D	6522104110	2DDXFDN	\$ 13,892.75
2" Double Type D w/Control Valve	6522108110	2DDXFDVN	\$ 15,050.90
2-1/2" Double Type D	6521104110	25DDXFDN	\$ 13,892.75
2-1/2" Double Type D w/Control Valve	6521108110	25DDXFDVN	\$ 15,050.90
3" Double Type D	6523104110	3DDXFDN	\$ 14,058.65
3" Double Type D w/Control Valve	6523108110	3DDXFDVN	\$ 15,215.75
4" Double Type D	6524104110	4DDXFDN	\$ 14,190.95
4" Double Type D w/Control Valve	6524108110	4DDXFDVN	\$ 15,268.25
6" Double Type D	6526104110	6DDXFDN	\$ 15,563.30
6" Double Type D w/Control Valve	6526108110	6DDXFDVN	\$ 17,172.95
8" Double Type D	6528104110	8DDXFDN	\$ 18,248.15
8" Double Type D w/Control Valve	6528108110	8DDXFDVN	\$ 21,433.85
MODEL DDX - DELUGE VALVE FULLY ASSEMBLED - DOUBLE INTERLOCK - TYPE F			
2" Double Type F	6522304110	2DDXFFN	\$ 14,389.40
2" Double Type F w/Control Valve	6522308110	2DDXFFVN	\$ 15,546.50
2-1/2" Double Type F	6521304110	25DDXFFN	\$ 14,389.40
2-1/2" Double Type F w/Control Valve	6521308110	25DDXFFVN	\$ 15,546.50
3" Double Type F	6523304110	3DDXFFN	\$ 14,389.40
3" Double Type F w/Control Valve	6523308110	3DDXFFVN	\$ 15,546.50
4" Double Type F	6524304110	4DDXFFN	\$ 14,508.05
4" Double Type F w/Control Valve	6524308110	4DDXFFVN	\$ 15,685.10
6" Double Type F	6526304110	6DDXFFN	\$ 15,952.85
6" Double Type F w/Control Valve	6526308110	6DDXFFVN	\$ 17,561.45
8" Double Type F	6528304110	8DDXFFN	\$ 19,461.95
8" Double Type F w/Control Valve	6528308110	8DDXFFVN	\$ 21,433.85
MODEL DDX - DELUGE VALVE FULLY ASSEMBLED - DOUBLE INTERLOCK - TYPE PL			
2" Double Type PL	6522D04010	2DDXFPLN	\$ 16,290.95
2" Double Type PL w/Control Valve	6522D08010	2DDXFPLVN	\$ 17,436.50
2-1/2" Double Type PL	6521D04010	25DDXFPLN	\$ 16,285.70
2-1/2" Double Type PL w/Control Valve	6521D08010	25DDXFPLVN	\$ 17,401.85
3" Double Type PL	6523D04010	3DDXFPLN	\$ 16,307.75
3" Double Type PL w/Control Valve	6523D08010	3DDXFPLVN	\$ 17,378.75
4" Double Type PL	6524D04010	4DDXFPLN	\$ 16,047.35
4" Double Type PL w/Control Valve	6524D08010	4DDXFPLVN	\$ 17,344.10
6" Double Type PL	6526D04010	6DDXFPLN	\$ 17,680.10
6" Double Type PL w/Control Valve	6526D08010	6DDXFPLVN	\$ 19,057.70
8" Double Type PL	6528D04010	8DDXFPLN	\$ 21,279.50
8" Double Type PL w/Control Valve	6528D08010	8DDXFPLVN	\$ 23,097.05



**Preaction
Systems with
our DDX Valve**

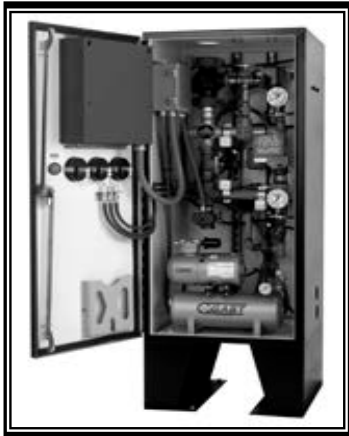
**SPECIAL HAZARDS
SPECIAL SYSTEMS**



**DDX Double Interlock
Preaction System -
Type PL**

• See Bulletin 752

Description	Part Number	Short Code	List Price
PREACTION TRIM — SINGLE INTERLOCK - SEGMENTALLY ASSEMBLED			
Wet Pilot Line 2", 2-1/2" & 3"	6520B02010	25DDXWSPN	\$ 3,594.35
Wet Pilot Line 4", 6" & 8"	6520B03010	4DDXWSPN	\$ 3,594.35
Dry Pilot Line 2", 2-1/2" & 3"	6520A02010	25DDXDSPN	\$ 5,219.75
Dry Pilot Line 4", 6" & 8"	6520A03010	4DDXDSPN	\$ 5,219.75
Electric Release 2", 2-1/2" & 3"	6520C02110	25DDXESPN	\$ 4,900.55
Electric Release 4", 6" & 8"	6520C03110	4DDXESPN	\$ 4,900.55
PREACTION TRIM — SINGLE INTERLOCK - INDIVIDUAL PARTS			
Wet Pilot Line 2", 2-1/2" & 3"	6520B00010	25DDXWSLN	\$ 3,270.95
Wet Pilot Line 4", 6" & 8"	6520B01010	4DDXWSLN	\$ 3,272.00
Dry Pilot Line 2", 2-1/2" & 3"	6520A00010	25DDXDSLN	\$ 4,912.10
Dry Pilot Line 4", 6" & 8"	6520A01010	4DDXDSLN	\$ 4,412.10
Electric Release 1-1/2"	6501200112	15PTSL	\$ 1,386.00
Electric Release 2", 2-1/2" & 3"	6520C00110	25DDXESLN	\$ 4,570.85
Electric Release 4", 6" & 8"	6520C01110	4DDXESLN	\$ 4,570.85
PREACTION TRIM — DOUBLE INTERLOCK - INDIVIDUAL PARTS			
1-1/2" Type D	6503003405	15PTDLD	\$ 3,900.95
2", 2-1/2" & 3" Type D	6520100110	25DDXDLN	\$ 7,452.05
4", 6" & 8" Type D	6520101110	4DDXDLN	\$ 7,452.05
2", 2-1/2" & 3" Type F	6520300110	25DDXFLN	\$ 7,854.20
4", 6" & 8" Type F	6520301110	4DDXFLN	\$ 7,854.20
PREACTION TRIM — DOUBLE INTERLOCK - SEGMENTALLY ASSEMBLED			
2", 2-1/2" & 3" Type D	6520102110	25DDXDPN	\$ 7,884.65
4", 6" & 8" Type D	6520103110	4DDXDPN	\$ 7,885.70
2", 2-1/2" & 3" Type F	6520302110	25DDXFPN	\$ 8,286.80
4", 6" & 8" Type F	6520303110	4DDXFPN	\$ 8,285.75
PREACTION TRIM — DOUBLE INTERLOCK - TYPE PL - INDIVIDUAL PARTS			
2" - 3" Type PL	6520D00010	25DDXPLLN	\$ 7,885.65
4" - 8" Type PL	6520D01010	4DDXPLLN	\$ 7,931.95
PREACTION TRIM — DOUBLE INTERLOCK - TYPE PL - SEGMENTALLY ASSEMBLED			
2" - 3" Type PL	6520D02010	25DDXPLPN	\$ 9,460.02
4" - 8" Type PL	6520D03010	4DDXPLPN	\$ 9,494.75



Description	Part Number	List Price
PREPAK SYSTEM		
PrePaK 1-1/2"	15PREPAK	\$ 52,452.75
PrePaK with 2" DDX Valve	2DDXPAK	\$ 53,870.25
PrePaK with 2-1/2" DDX Valve	25DDXPAK	\$ 54,579.00
PrePaK with 3" DDX Valve	3DDXPAK	\$ 56,705.25
PrePaK with 4" DDX Valve	4DDXPAK	\$ 59,682.00
PrePaK with 6" DDX Valve and 3/4" HP Air Compressor	6DDXPAK	\$ 67,904.55
PrePaK with 6" DDX Valve and 1-1/2" HP Air Compressor	6DDXPAK15	\$ 71,590.05

SPECIAL HAZARDS
SPECIAL SYSTEMS

Please note:

220 Volt & 250 psi PrePaKs are available as special orders

- **The PrePaK System**
- See Bulletins 723, 740 & 733



SPECIAL HAZARDS
SPECIAL SYSTEMS

- DDX Type D PrePaK
- New 8" Available
- See Bulletin 733

Description	Part Number	List Price
MODEL DDX TYPE D PREPAK - UNIT ONLY		
8" DDX Type D PrePaK - Grooved	6552001808	\$ 57,540.00
8" DDX Type D PrePaK - Flanged	6552001809	\$ 64,890.00
SOLENOID VALVE RATED PRESSURE (REQUIRED) - OPTIONS (PICK ONE)		
Solenoid Valve, 175 psi (12.1 bar)	6871020030	\$ 945.00
Solenoid Valve, 175 psi - Explosion Proof	6871020032	\$ 3,150.00
Solenoid Valve, 250 psi (17.2 bar)	6871020031	\$ 3,255.00
RELEASING/CONTROL PANEL - OPTIONS (PICK ONE)		
Control Panel for 8" Type D PrePaK	6611772011	\$ 9,975.00
W/O Control Panel for 8" Type D PrePaK	6611772014	\$ 945.00
AIR COMPRESSOR KIT FOR 8" - OPTIONAL		
Kit, Compressor, 1-1/2 HP 110 V	6702001009	\$ 22,575.00
Kit, Compressor, 2 HP, 220 V	6702001010	\$ 22,575.00
SYSTEM SIDE CONTROL VALVE - OPTIONAL		
System Side Control Valve for 8" Type D PrePaK - Grooved	6501200028	\$ 3,885.00
System Side Control Valve for 8" Type D PrePaK - Flanged	6501200031	\$ 12,075.00
ACCELERATOR KIT - OPTIONAL		
Kit, Accelerator, Type D PrePaK	6516000006	\$ 2,415.00
DESICCANT DRYER - OPTIONAL		
Kit, Desiccant Dryer	6501200003	\$ 3,150.00
RELEASING CIRCUIT DISABLE SWITCH - OPTIONAL		
Kit, RCDS-1	6501200002	\$ 959.00
NITROGEN KIT - OPTIONAL		
Nitro Regulator Device, UL/FM for 8" Type D PrePaK	6304030204	\$ 4,200.00
EXTERNAL NITROGEN TANK BRACKET - OPTIONAL		
Bracket, Kit, Tank, Type D PrePaK	6899190002	\$ 997.50
NITROGEN SUPPLY		
NS-PaK Nitrogen Regulator System	6704030021	\$ 7,875.00



**SPECIAL HAZARDS
SPECIAL SYSTEMS**

- DDX Type F PrePaK
- New 8" Available
- Sizes: 2" (50mm),
2-1/2" (65mm), 3" (80mm),
4" (100mm), 6" 150mm)
& 8" (200mm)
- See Bulletin 747

Description	Part Number	List Price
MODEL DDX TYPE F PREPAK - UNIT ONLY		
2" DDX Type F PrePaK	6552002201	\$ 46,956.00
2-1/2" DDX Type F PrePaK	6552002702	\$ 47,410.65
3" DDX Type F PrePaK	6552003201	\$ 47,736.15
4" DDX Type F PrePaK	6552001202	\$ 48,061.65
6" DDX Type F PrePaK	6552001206	\$ 49,037.10
8" DDX Type F PrePaK - Grooved	6552001228	\$ 55,440.00
8" DDX Type F PrePaK - Flanged	6552001229	\$ 62,790.00
SOLENOID VALVE RATED PRESSURE (REQUIRED) - OPTIONS (PICK ONE)		
Solenoid Valve, 175 psi (12.1bar)	6871020030	\$ 945.00
Solenoid Valve, 175 psi - Explosion Proof	6871020032	\$ 3,150.00
Solenoid Valve, 250 psi (17.2 bar)	6871020031	\$ 3,255.00
RELEASING/CONTROL PANEL - OPTIONS (PICK ONE)		
Control Panel for 2", 2-1/2" & 3" Type F PrePaK	6611772000	\$ 5,236.35
W/O Control Panel for 2", 2-1/2" & 3" Type F PrePaK	6611772001	\$ 580.65
Control Panel for 4" & 6" Type F PrePaK	6611772002	\$ 9,765.00
W/O Control Panel for 4" & 6" Type F PrePaK	6611772003	\$ 1,050.00
Control Panel for 8" Type F PrePaK	6611772010	\$ 9,975.00
W/O Control Panel for 8" Type F PrePaK	6611772013	\$ 945.00
AIR COMPRESSOR KIT FOR 2", 2-1/2" & 3" - OPTIONAL		
Kit, Compressor, 1/6 HP, 110 V	6702001001	\$ 8,400.00
Kit, Compressor, 1/6 HP, 220 V	6702001002	\$ 8,505.00
Kit, Compressor, 1/3 HP, 110 V	6702001003	\$ 9,975.00
Kit, Compressor, 1/3 HP, 220 V	6702001004	\$ 10,500.00
AIR COMPRESSOR KIT FOR 4" & 6" - OPTIONAL		
Kit, Compressor, 3/4 HP 110 V	6702001005	\$ 13,125.00
Kit, Compressor, 3/4 HP, 220 V	6702001006	\$ 16,800.00
Kit, Compressor, 1-1/2 HP, 110 V	6702001007	\$ 22,050.00
Kit, Compressor, 1-1/2 HP, 220 V	6702001008	\$ 22,050.00
AIR COMPRESSOR KIT FOR 8" - OPTIONAL		
Kit, Compressor, 1-1/2 HP 110 V	6702001009	\$ 22,575.00
Kit, Compressor, 2 HP, 220 V	6702001010	\$ 22,575.00
SYSTEM SIDE CONTROL VALVE - OPTIONAL		
System Side Control Valve for 2" Type F PrePaK	6501200021	\$ 3,780.00
System Side Control Valve for 2-1/2" Type F PrePaK	6501200023	\$ 3,045.00
System Side Control Valve for 3" Type F PrePaK	6501200025	\$ 3,360.00
System Side Control Valve for 4" Type F PrePaK	6501200026	\$ 3,465.00
System Side Control Valve for 6" Type F PrePaK	6501200027	\$ 4,725.00
System Side Control Valve for 8" Type F PrePaK - Grooved	6501200028	\$ 3,885.00
System Side Control Valve for 8" Type F PrePaK - Flanged	6501200031	\$ 12,075.00
ACCELERATOR KIT - OPTIONAL		
Kit, Accelerator, Type F PrePaK	6516000006	\$ 2,415.00
DESICCANT DRYER - OPTIONAL		
Kit, Desiccant Dryer	6501200003	\$ 3,150.00
RELEASING CIRCUIT DISABLE SWITCH - OPTIONAL		
Kit, RCDS-1	6501200002	\$ 959.00
NITROGEN KIT - OPTIONAL		
Nitro Regulator Device, UL/FM for 2", 2-1/2" & 3" Type F PrePaK	6304030200	\$ 2,940.00
Nitro Regulator Device, UL/FM for 4" & 6" Type F PrePaK	6304030202	\$ 3,150.00
Nitro Regulator Device, UL/FM for 8" Type F PrePaK	6304030204	\$ 4,200.00
EXTERNAL NITROGEN TANK BRACKET - OPTIONAL		
Bracket, Kit, Tank	6899190002	\$ 997.50

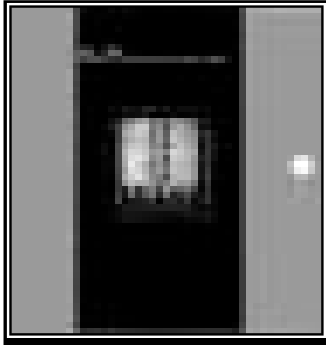
Special Hazards
Special Systems
PREPAK



**SPECIAL HAZARDS
SPECIAL SYSTEMS**

- DDX-LP DryPaK System
- New 8" Available
- Sizes: 2" (50mm),
2-1/2" (65mm), 3" (80mm),
4" (100mm), 6" 150mm
& 8" (200mm)
- See Bulletin 748

Description	Part Number	List Price
DDX-LP DRYPAK SYSTEM - 2", 2-1/2" & 3" - UNIT ONLY		
2" DDX DryPaK - UL/FM Pressure Switches	2DRYPAK	\$ 45,648.75
2-1/2" DDX DryPaK - UL/FM Pressure Switches	25DRYPAK	\$ 45,648.75
3" DDX DryPaK - UL/FM Pressure Switches	3DRYPAK	\$ 45,648.75
DDX-LP DRYPAK SYSTEM - 4" & 6" - UNIT ONLY		
4" DDX DryPaK - UL/FM Pressure Switches	4DRYPAK	\$ 48,079.50
6" DDX DryPaK - UL/FM Pressure Switches	6DRYPAK	\$ 49,295.40
DDX-LP DRYPAK SYSTEM - 8" - UNIT ONLY		
8" DDX DryPaK - Grooved	6553000008	\$ 56,490.00
8" DDX DryPaK - Flanged	6553000009	\$ 61,740.00
AIR COMPRESSOR KIT FOR 2", 2-1/2" & 3" - OPTIONAL		
Kit, Compressor, 1/6 HP, 110 VAC @ 60 HZ	6702001001	\$ 8,400.00
Kit, Compressor, 1/6 HP, 220 VAC @ 50 HZ	6702001002	\$ 8,505.00
Kit, Compressor, 1/3 HP, 110 VAC @ 60 HZ (3" System Only)	6702001003	\$ 9,975.00
Kit, Compressor, 1/3 HP, 220 VAC @ 50 HZ (3" System Only)	6702001004	\$ 10,500.00
AIR COMPRESSOR KIT FOR 4" & 6" - OPTIONAL		
Kit, Compressor, 3/4 HP 110 VAC @ 60 HZ	6702001005	\$ 13,125.00
Kit, Compressor, 3/4 HP, 220 VAC @ 50 HZ	6702001006	\$ 16,800.00
Kit, Compressor, 1-1/2 HP, 110 VAC @ 60 HZ (6" System Only)	6702001007	\$ 22,050.00
Kit, Compressor, 1-1/2 HP, 220 VAC @ 50 HZ (6" System Only)	6702001008	\$ 22,050.00
AIR COMPRESSOR KIT FOR 8" - OPTIONAL		
Kit, Compressor, 1-1/2 HP 110 V	6702001009	\$ 22,575.00
Kit, Compressor, 2 HP, 220 V	6702001010	\$ 22,575.00
SYSTEM SIDE CONTROL VALVE - OPTIONAL		
System Side Control Valve for 2" DryPaK	6501200021	\$ 3,780.00
System Side Control Valve for 2-1/2" DryPaK	6501200023	\$ 3,045.00
System Side Control Valve for 3" DryPaK	6501200025	\$ 3,360.00
System Side Control Valve for 4" DryPaK	6501200026	\$ 3,465.00
System Side Control Valve for 6" DryPaK	6501200027	\$ 4,725.00
System Side Control Valve for 8" DryPaK - Grooved	6501200028	\$ 3,885.00
System Side Control Valve for 8" DryPaK - Flanged	6501200031	\$ 12,075.00
ACCELERATOR KIT - OPTIONAL		
Kit, Accelerator	6516000006	\$ 2,415.00
DESICCANT DRYER - OPTIONAL		
Kit, Desiccant Dryer	6501200003	\$ 3,150.00
NITROGEN KIT - OPTIONAL		
with UL/FM Approved Pressure Switch - for 2", 2-1/2" & 3"	6304030210	\$ 2,940.00
with UL/FM Approved Pressure Switch - for 4" & 6"	6304030212	\$ 3,150.00
Nitro Regulator Device, UL/FM for 8" Dry PaK	6304030214	\$ 4,200.00
EXTERNAL NITROGEN TANK BRACKET - OPTIONAL		
Bracket, Kit, Tank	6899190002	\$ 997.50



Description	Part Number	List Price
ACCELERATOR		
B1 Accelerator	AE	\$ 1,968.75
B2 Accelerator Trim	ACT	\$ 809.55
B1 - Replacement Parts Kits	B1RPK	\$ 668.85
SOLENOID VALVE & PULL BOX/STATIONS		
Solenoid Valve - LV2LBX25 - 24 V DC	SOL2	\$ 903.00
Solenoid Valve - LV2LBX15 - 115V AC	SOL2A	\$ 1,383.90
Model A - Hydraulic Manual Pull Box	HMBOX	\$ 633.05
Elect. Man. Emergency Station (Single)	BNG1	\$ 498.33
Elect. Man. Emergency Station (Dbl)	BNG1F	\$ 498.33
PFC4410 PANEL - TYPE D SYSTEMS		
PFC 4410RC Panel	PFCPANEL	\$ 4,270.14
BATTERIES (2 REQUIRED)		
PS 1270 12 Volt, 7 AMP (UL Systems)	BATUL	\$ 283.61
PS 12120 12 Volt, 12 AMP (FM Systems)	BATFM	\$ 421.05

SPECIAL HAZARDS
SPECIAL SYSTEMS

- See Bulletin 700



Description	Part Number	List Price
DRAIN ASSEMBLIES		
2 - 1/2" Deluge	6501180302	\$ 803.25
4 & 6" Deluge	6501180300	\$ 865.20
2 - 1/2" Preaction	6501180102	\$ 915.60
4" Preaction	6501180100	\$ 989.10
6" Preaction	6501180200	\$ 989.10
DRY PILOT ACTUATOR		
Dry Pilot Actuator - Model A	71030000	\$ 1,392.30
Dry Pilot Actuator - LP/LDX	71030010	\$ 1,392.30
DETECTORS (AVAILABLE UPON REQUEST)		

SPECIAL HAZARDS
SPECIAL SYSTEMS

- See Bulletin 707

Description	Part Number	List Price
ELECTRIC ALARM BELLS		
6" — 24 VDC	6KMS	\$ 93.25
8" — 24 VDC	8KMS	\$ 116.26
10" — 24VDC	10KMS	\$ 129.09
6" — 120 VAC	6KBS	\$ 93.25
8" — 120 VAC	8KBS	\$ 116.26
10" — 120 VAC	10KBS	\$ 129.09
WBB Weatherproof Back Box	WBB	\$ 49.97
SUPERVISORY AIR SUPPLY		
B-SI Air Compressor Panel (110 VAC)	BACPS	\$ 5,252.10
C-SI Air Compressor Panel (220 VAC)	CACPS	\$ 6,149.85
A-2 Owner's Air	AMDAG	\$ 1,235.85
A Owner's Air (factory set 10psi)	AMDA10	\$ 1,235.85
A Owner's Air (factory set 23psi)	AMDA23	\$ 1,235.85
B-1 Individual Compressor	AMDBG	\$ 1,403.85
B Air Compressor Control Assembly	AMDB	\$ 1,403.85
Kit, Sys Con, B-SI/C-SI/NS-PaK	6704030001	\$ 1,853.25
VALVE SEAT WRENCHES		
4" Model B & BX Deluge Valve	W4DV	\$ 273.00
6" Model B & BX Deluge Valve	W6DV	\$ 292.95

NITROGEN MAINTENANCE
DEVICES

- NS-PaK and NS-ASAM
- See Bulletin 254

NEW

LPC SYSTEMS

Description	Part Number	List Price
NS-PAK		
NS-PaK Nitrogen Regulator System	6704030021	\$ 7,875.00
NS-ASAM		
Nitrogen Maintenance Device w/Pressure Switch	NSASAM	\$ 5,250.00

Description	Part Number	List Price
LPC PREACTION SYSTEMS (COMPLETE)		
100mm LPCB Preaction System	6999995334	\$ 22,168.52
165mm LPCB Preaction System	6999995335	\$ 23,453.48
PREACTION SYSTEM COMPONENTS		
CEL Prescient Panel	6999991602	\$ 5,541.45
CEL 3.2A Batteries	6999991603	\$ 321.28
Battery Cabinet	6999991604	\$ 321.28
LPC Single Interlock Trim	6503001605	\$ 2,677.04
MISCELLANEOUS ITEMS		
Explosion proof solenoid valve	6999990322	\$ 1,405.45

SPECIAL HAZARDS
SPECIAL SYSTEMS

**Protectowire Linear
Heat Detector (LHD)**



Description	Part Number	Short Code	List Price - Per Foot
TYPE EPC CONSTRUCTION (VINYL JACKET)			
Protectowire (155°F / 68°C) on Msg Wire	6999995589	PHSC-155-EPC-M	\$ 2.90
Protectowire (190°F / 88°C)	6999995590	PHSC-190-EPC	\$ 2.60
Protectowire (190°F / 88°C) on Msg Wire	6999995591	PHSC-190-EPC-M	\$ 2.90
Protectowire (220°F / 105°C)	6999995592	PHSC-220-EPC	\$ 2.60
Protectowire (220°F / 105°C) on Msg Wire	6999995593	PHSC-220-EPC-M	\$ 2.90
Protectowire (280°F / 138°C)	6999995594	PHSC-280-EPC	\$ 2.60
Protectowire (280°F / 138°C) on Msg Wire	6999995595	PHSC-280-EPC-M	\$ 2.90
Protectowire (356°F / 180°C) on Msg Wire	6999995596	PHSC-356-EPC-M	\$ 2.90
TYPE EPN CONSTRUCTION (NYLON OVER VINYL JACKET)			
Protectowire (190°F / 88°C)	6999995597	PHSC-190-EPN	\$ 3.62
Protectowire (190°F / 88°C) on Msg Wire	6999995598	PHSC-190-EPN-M	\$ 4.12
TYPE EPR CONSTRUCTION (POLYPROPYLENE ELASTOMER JACKET)			
Protectowire (155°F / 68°C)	6999995599	PHSC-155-EPR	\$ 2.80
Protectowire (155°F / 68°C) on Msg Wire	6999995600	PHSC-155-EPR-M	\$ 3.10
Protectowire (190°F / 88°C)	6999995601	PHSC-190-EPR	\$ 2.80
Protectowire (190°F / 88°C) on Msg Wire	6999995602	PHSC-190-EPR-M	\$ 3.10
Protectowire (280°F / 138°C)	6999995603	PHSC-280-EPR	\$ 3.50
Protectowire (280°F / 138°C) on Msg Wire	6999995604	PHSC-280-EPR-M	\$ 3.99
Protectowire (356°F / 180°C)	6999995605	PHSC-356-EPR	\$ 3.62
Protectowire (356°F / 180°C) on Msg Wire	6999995606	PHSC-356-EPR-M	\$ 4.12
TYPE TRI CONSTRUCTION DUAL TEMPERATURE TRI-WIRE (VINYL JACKET)			
Protectowire Dual Temp (155/200°F - 68/93°C)	6999995607	PHSC-6893-TRI	\$ 2.90
Protectowire Dual Temp (155/200°F - 68/93°C) on Msg Wire	6999995608	PHSC-6893-TRI-M	\$ 3.20
TYPE XLT CONSTRUCTION (VINYL POLYMER JACKET)			
Protectowire Type XLT (135°F / 57 °C)	6999995582	PHSC-135-XLT	\$ 2.70
Protectowire Type XLT (135°F / 57 °C) on MSG Wire	6999995609	PHSC-135-XLT-M	\$ 3.00

Notes:

- **Standard Packaging** - Standard packaging consists of 500 ft. (152m) coils and spools ranging in length from 2300 ft. (710m) to 3280 ft. (1000m) depending upon model ordered. In general, smaller lengths of 500 ft. or less will be on coils, and longer lengths on spools. The exact length of wire per spool used to complete each order is at the sole discretion of the factory. The policy is to send as few spools / coils as possible based upon stock availability.
- **Custom Lengths** - Custom cut single piece coils in lengths up to 1000 ft. (305m) or spools up to 3280 ft. (1000m) can be provided. Limitations may apply depending upon specific model ordered.
- **Messenger Wire Models** - Messenger wire reduces the maximum length of Protectowire that can be accommodated on a standard spool. Types EPC-M, EPR-M and XLT-M are limited to 2500 ft (762m) per spool. Types EPN-M and TRI-M are limited to 2300 ft. (701m) per spool.

SPECIAL HAZARDS
SPECIAL SYSTEMS

**Protectowire Linear
Heat Detector (LHD)**
Installation Accessories



Description	Part Number	Short Code	List Price
COMMERCIAL TYPE ZONE/END-OF-LINE JUNCTION BOXES			
Non-metallic Moisture Proof box w/compression terminals	6999995610	ZB-4-QC-MP	\$ 37.00
Strain Relief Connector (One each req'd per penetration)	6999995585	SR-502	\$ 9.00
HEAVY DUTY TYPE ZONE/END-OF-LINE JUNCTION BOXES			
Fiberglass NEMA-4X Type JIC Enclosure w/compression terminals	6999995584	ZB-HD-4-QC (N4X)	\$ 150.00
Strain Relief Connector (One each req'd per penetration)	6999995585	SR-502	\$ 9.00
WIRING ACCESSORIES			
Splicing Connectors (10/pk, SFTS Sealant Recommended)	6999995586	PWSC	\$ 12.00
3 Pole Splicing Connectors for TRI-Wire (10/pk, SFTS Sealant Recommended)	6999995611	PWSC - 3	\$ 12.00
Splicing Sleeves (10/pk)	6999995612	PWS	\$ 12.00
Tape Sealant for PWSC Splice Connectors (20-30 splices)	6999995613	SFTS-1-8F	\$ 18.00
Flexible Leads	6999995614	PFL	\$ 18.00
Splicing Tape - White	6999995615	#35 White	\$ 10.00
Splicing Tape - Red	6999995616	#35 Red	\$ 10.00
Splicing Tape - Blue	6999995617	#35 Blue	\$ 10.00
Splicing Tape - Black (Low Temp Tape for freezer applications)	6999995618	33+	\$ 11.00
Wire Dispensing Reel for Coils	6999995619	SU-15	\$ 210.00
FASTENERS - GENERAL PURPOSE APPLICATIONS			
Clips, Corner, Nylon - White	6999995583	WAW-N	\$ 0.44
Clips, Corner, Polypropylene - Clear	6999995620	WAW-P	\$ 0.40
Clips, Line (Use with Type EPR, EPC, EPN & TRI Protectowire)	6999995621	OHS-1	\$ 0.50
304 Stainless Steel Line Clip w/ 1/4" hole (Use w/ all LHD types)	6999995622	OHS-SS	\$ 2.00
Beam Clamp Assembly (Steel)	6999995623	BC-2	\$ 2.50
Iron Zinc Plated Beam Clamp Assembly (w/ Polypropylene clip)	6999995624	BC-3P	\$ 3.00
Iron Zinc Plated Beam Clamp Assembly (w/ Nylon clip)	6999995625	BC-3N	\$ 3.00
Drive Rings	6999995626	PDR	\$ 0.30
L-Bracket (Rim Seal Type)	6999995627	RMC-2	\$ 3.50
Stainless Steel L-Bracket (Rim Seal Type)	6999995628	RMC-3	\$ 12.00
Insulated Standoff	6999995629	TR-5G	\$ 9.36
Cable Mount (Requires Sikaflex adhesive)	6999995630	EMS-A-CO	\$ 1.50
Cable Tie (for EMS-A-CO)	6999995631	PLT1S-CO	\$ 0.80
FASTENERS - CABLE TRAY APPLICATIONS			
Mounting Clip (single piece)	6999995633	HPC-2	\$ 2.00
Mounting Clip Assembly	6999995634	CC-2N	\$ 2.00
Mounting Clip Assembly	6999995635	CC-2W	\$ 2.00
Mounting Clip Assembly	6999995636	CC-10N	\$ 2.50
Mounting Clip Assembly	6999995637	CC-10W	\$ 2.50
Mounting Clip Assembly w/ screw & lock nut	6999995638	CC-10N-S	\$ 3.00
Mounting Clip Assembly w/ screw & lock nut	6999995639	CC-10W-S	\$ 3.00
FASTENERS - SPRINKLER PIPE MOUNTING			
Pipe Mounting Strap - Nylon (3/4" to 2" pipe)	6999995640	PM-3A	\$ 1.69
Pipe Mounting Strap - Nylon (2-1/2" to 3-1/2" pipe)	6999995641	PM-3B	\$ 1.20
Pipe Mounting Strap - Nylon (4" to 6" pipe)	6999995642	PM-3C	\$ 6.00
MESSENGER WIRE APPLICATIONS			
Eyebolt	6999995643	TR-4A	\$ 2.10
Turnbuckle	6999995644	TR-24	\$ 5.60
304 Stainless Steel Eyebolt	6999995645	TR-4A-S	\$ 6.00
304 Stainless Steel Turnbuckle	6999995646	TR-24-S	\$ 13.00
TEST EQUIPMENT			
Fault Locator System	6999995647	MFL-92	\$ 930.00
Protectowire Alarm Point Locator Meter Adapter	6999995648	APL-90	\$ 790.00