

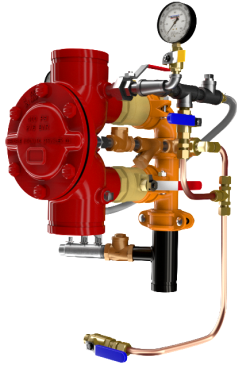
**DDV DIAPHRAGM  
 DELUGE  
 ELECTRIC TRIM**

- See Bulletins 551
- DDV Electric-Uses 175 PSI Solenoid Valve

Description	Part Number	Short Code	List Price
<b>MODEL DDV DELUGE VALVES FULLY ASSEMBLED - ELECTRIC TRIM</b>			
1-1/2" Groove/Groove (ANSI/AWWA C606)	6507002000		S\$10,403.03
1-1/2" Flange/Flange Class 150 (ASME B16.5)	6507102000		S\$11,443.32
1-1/2" Flange/Flange Class 300 (ASME B16.5)	6507202000		S\$11,443.32
1-1/2" Flange/Flange PN16 (ISO 7005-2)	6507302000		S\$11,443.32
1-1/2" NPT Thread/Thread (ANSI/ASME B1.20.1)	6507502000		S\$11,443.32
1-1/2" ISO7-1 Thread/Thread	6507602000		S\$11,443.32
2" Groove/Groove (ANSI/AWWA C606)	6507022000		S\$10,403.03
2" Flange/Flange Class 150 (ASME B16.5)	6507122000		S\$11,443.32
2" Flange/Flange Class 300 (ASME B16.5)	6507222000		S\$11,443.32
2" Flange/Flange PN16 (ISO 7005-2)	6507322000		S\$11,443.32
2" NPT Thread/Thread (ANSI/ASME B1.20.1)	6507522000		S\$11,443.32
2" ISO7-1 Thread/Thread	6507622000		S\$11,443.32
2-1/2" Groove/Groove (ANSI/AWWA C606)	6507012000		S\$12,136.86
2-1/2" Flange/Flange Class 150 (ASME B16.5)	6507112000		S\$13,350.55
2-1/2" Flange/Flange Class 300 (ASME B16.5)	6507212000		S\$13,350.55
2-1/2" Flange/Flange PN16 (ISO 7005-2)	6507312000		S\$13,350.55
2-1/2" NPT Thread/Thread (ANSI/ASME B1.20.1)	6507512000		S\$13,350.55
2-1/2" ISO7-1 Thread/Thread	6507612000		S\$13,350.55
76MM Groove/Groove (ANSI/AWWA C606)	6507072000		S\$12,136.86
3" Groove/Groove (ANSI/AWWA C606)	6507032000		S\$12,136.86
3" Flange/Flange Class 150 (ASME B16.5)	6507132000		S\$13,350.55
3" Flange/Flange Class 300 (ASME B16.5)	6507232000		S\$13,350.55
3" Flange/Flange PN16 (ISO 7005-2)	6507332000		S\$13,350.55
3" NPT Thread/Thread (ANSI/ASME B1.20.1)	6507532000		S\$13,350.55
3" ISO7-1 Thread/Thread	6507632000		S\$13,350.55
4" Groove/Groove (ANSI/AWWA C606)	6507042000		S\$14,737.62
4" Flange/Flange Class 150 (ASME B16.5)	6507142000		S\$16,211.38
4" Flange/Flange Class 300 (ASME B16.5)	6507242000		S\$16,211.38
4" Flange/Flange PN16 (ISO 7005-2)	6507342000		S\$16,211.38
6" Groove/Groove (ANSI/AWWA C606)	6507062000		S\$19,072.22
6" Flange/Flange Class 150 (ASME B16.5)	6507162000		S\$20,979.43
6" Flange/Flange Class 300 (ASME B16.5)	6507262000		S\$20,979.43
6" Flange/Flange PN16 (ISO 7005-2)	6507362000		S\$20,979.43
165MM Groove/Groove (ANSI/AWWA C606)	6507052000		S\$19,072.22
8" Groove/Groove (ANSI/AWWA C606)	6507082000		S\$40,135.14
8" Flange/Flange Class 150 (ASME B16.5)	6507182000		S\$44,148.65
8" Flange/Flange/Class 300 (ASME B16.5)	6507282000		S\$44,148.65
8" Flange/Flange PN16 (ISO 7005-2)	6507382000		S\$44,148.65

**Notes:**

Base trim does not include drain trim, alarm test line, or control valve. Please see the last page of the DDV section for optional trim components.



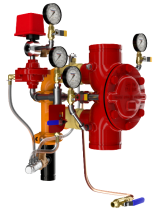
**DDV DIAPHRAGM  
 DELUGE WET  
 PILOT LINE**

- See Bulletin 551

Description	Part Number	Short Code	List Price
<b>MODEL DDV DELUGE VALVES FULLY ASSEMBLED - WET PILOT TRIM</b>			
1-1/2" Groove/Groove (ANSI/AWWA C606)	650700000		S\$ 8,669.19
1-1/2" Flange/Flange Class 150 (ASME B16.5)	650710000		S\$ 9,536.11
1-1/2" Flange/Flange Class 300 (ASME B16.5)	650720000		S\$ 9,536.11
1-1/2" Flange/Flange PN16 (ISO 7005-2)	650730000		S\$ 9,536.11
1-1/2" NPT Thread/Thread (ANSI/ASME B1.20.1)	650750000		S\$ 9,536.11
1-1/2" ISO7-1 Thread/Thread	650760000		S\$ 9,536.11
2" Groove/Groove (ANSI/AWWA C606)	650702000		S\$ 8,669.19
2" Flange/Flange Class 150 (ASME B16.5)	650712000		S\$ 9,536.11
2" Flange/Flange Class 300 (ASME B16.5)	650722000		S\$ 9,536.11
2" Flange/Flange PN16 (ISO 7005-2)	650732000		S\$ 9,536.11
2" NPT Thread/Thread (ANSI/ASME B1.20.1)	650752000		S\$ 9,536.11
2" ISO7-1 Thread/Thread	650762000		S\$ 9,536.11
2-1/2" Groove/Groove (ANSI/AWWA C606)	650701000		S\$ 9,536.11
2-1/2" Flange/Flange Class 150 (ASME B16.5)	650711000		S\$10,489.72
2-1/2" Flange/Flange Class 300 (ASME B16.5)	650721000		S\$10,489.72
2-1/2" Flange/Flange PN16 (ISO 7005-2)	650731000		S\$10,489.72
2-1/2" NPT Thread/Thread (ANSI/ASME B1.20.1)	650751000		S\$10,489.72
2-1/2" ISO7-1 Thread/Thread	650761000		S\$10,489.72
76MM Groove/Groove (ANSI/AWWA C606)	650707000		S\$ 9,536.11
3" Groove/Groove (ANSI/AWWA C606)	650703000		S\$ 9,536.11
3" Flange/Flange Class 150 (ASME B16.5)	650713000		S\$10,489.72
3" Flange/Flange Class 300 (ASME B16.5)	650723000		S\$10,489.72
3" Flange/Flange PN16 (ISO 7005-2)	650733000		S\$10,489.72
3" NPT Thread/Thread (ANSI/ASME B1.20.1)	650753000		S\$10,489.72
3" ISO7-1 Thread/Thread	650763000		S\$10,489.72
4" Groove/Groove (ANSI/AWWA C606)	650704000		S\$11,269.95
4" Flange/Flange Class 150 (ASME B16.5)	650714000		S\$12,396.95
4" Flange/Flange Class 300 (ASME B16.5)	650724000		S\$12,396.95
4" Flange/Flange PN16 (ISO 7005-2)	650734000		S\$12,396.95
6" Groove/Groove (ANSI/AWWA C606)	650706000		S\$13,870.70
6" Flange/Flange Class 150 (ASME B16.5)	650716000		S\$15,257.77
6" Flange/Flange Class 300 (ASME B16.5)	650726000		S\$15,257.77
6" Flange/Flange PN16 (ISO 7005-2)	650736000		S\$15,257.77
165MM Groove/Groove (ANSI/AWWA C606)	650705000		S\$13,870.70
8" Groove/Groove (ANSI/AWWA C606)	650708000		S\$30,502.70
8" Flange/Flange Class 150 (ASME B16.5)	650718000		S\$33,552.97
8" Flange/Flange Class 300 (ASME B16.5)	650728000		S\$33,552.97
8" Flange/Flange PN16 (ISO 7005-2)	650738000		S\$33,552.97

**Notes:**

Base trim does not include drain trim, alarm test line, or control valve. Please see the last page of the DDV section for optional trim components.



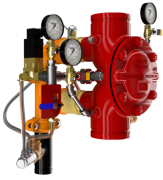
**DDV DIAPHRAGM  
 DELUGE DRY  
 PILOT LINE**

- See Bulletin 551

Description	Part Number	Short Code	List Price
<b>MODEL DDV DELUGE VALVES FULLY ASSEMBLED - DRY PILOT TRIM</b>			
1-1/2" Groove/Groove (ANSI/AWWA C606)	6507001000		S\$13,870.70
1-1/2" Flange/Flange Class 150 (ASME B16.5)	6507101000		S\$15,257.77
1-1/2" Flange/Flange Class 300 (ASME B16.5)	6507201000		S\$15,257.77
1-1/2" Flange/Flange PN16 (ISO 7005-2)	6507301000		S\$15,257.77
1-1/2" NPT Thread/Thread (ANSI/ASME B1.20.1)	6507501000		S\$15,257.77
1-1/2" ISO7-1 Thread/Thread	6507601000		S\$15,257.77
2" Groove/Groove (ANSI/AWWA C606)	6507021000		S\$13,870.70
2" Flange/Flange Class 150 (ASME B16.5)	6507121000		S\$15,257.77
2" Flange/Flange Class 300 (ASME B16.5)	6507221000		S\$15,257.77
2" Flange/Flange PN16 (ISO 7005-2)	6507321000		S\$15,257.77
2" NPT Thread/Thread (ANSI/ASME B1.20.1)	6507521000		S\$15,257.77
2" ISO7-1 Thread/Thread	6507621000		S\$15,257.77
2-1/2" Groove/Groove (ANSI/AWWA C606)	6507011000		S\$16,471.46
2-1/2" Flange/Flange Class 150 (ASME B16.5)	6507111000		S\$18,118.61
2-1/2" Flange/Flange Class 300 (ASME B16.5)	6507211000		S\$18,118.61
2-1/2" Flange/Flange PN16 (ISO 7005-2)	6507311000		S\$18,118.61
2-1/2" NPT Thread/Thread (ANSI/ASME B1.20.1)	6507511000		S\$18,118.61
2-1/2" ISO7-1 Thread/Thread	6507611000		S\$18,118.61
76MM Groove/Groove (ANSI/AWWA C606)	6507071000		S\$16,471.46
3" Groove/Groove (ANSI/AWWA C606)	6507031000		S\$16,471.46
3" Flange/Flange Class 150 (ASME B16.5)	6507131000		S\$18,118.61
3" Flange/Flange Class 300 (ASME B16.5)	6507231000		S\$18,118.61
3" Flange/Flange PN16 (ISO 7005-2)	6507331000		S\$18,118.61
3" NPT Thread/Thread (ANSI/ASME B1.20.1)	6507531000		S\$18,118.61
3" ISO7-1 Thread/Thread	6507631000		S\$18,118.61
4" Groove/Groove (ANSI/AWWA C606)	6507041000		S\$19,072.22
4" Flange/Flange Class 150 (ASME B16.5)	6507141000		S\$20,979.43
4" Flange/Flange Class 300 (ASME B16.5)	6507241000		S\$20,979.43
4" Flange/Flange PN16 (ISO 7005-2)	6507341000		S\$20,979.43
6" Groove/Groove (ANSI/AWWA C606)	6507061000		S\$22,539.89
6" Flange/Flange Class 150 (ASME B16.5)	6507161000		S\$24,793.88
6" Flange/Flange Class 300 (ASME B16.5)	6507261000		S\$24,793.88
6" Flange/Flange PN16 (ISO 7005-2)	6507361000		S\$24,793.88
165MM Groove/Groove (ANSI/AWWA C606)	6507051000		S\$22,539.89
8" Groove/Groove (ANSI/AWWA C606)	6507081000		S\$40,135.14
8" Flange/Flange Class 150 (ASME B16.5)	6507181000		S\$44,148.65
8" Flange/Flange Class 300 (ASME B16.5)	6507281000		S\$44,148.65
8" Flange/Flange PN16 (ISO 7005-2)	6507381000		S\$44,148.65

**Notes:**

Base trim does not include drain trim, alarm test line, or control valve. Please see the last page of the DDV section for optional trim components.



## DDV DIAPHRAGM DELUGE REMOTE RESET

- See Bulletin 550

Description	Part Number	Short Code	List Price
<b>MODEL DDV DELUGE VALVE - REMOTE RESET</b>			
1-1/2" Groove/Groove (ANSI/AWWA C606)	6507003000		S\$13,870.70
1-1/2" Flange/Flange Class 150 (ASME B16.5)	6507103000		S\$15,257.77
1-1/2" Flange/Flange Class 300 (ASME B16.5)	6507203000		S\$15,257.77
1-1/2" Flange/Flange PN16 (ISO 7005-2)	6507303000		S\$15,257.77
1-1/2" NPT Thread/Thread (ANSI/ASME B1.20.1)	6507503000		S\$15,257.77
1-1/2" ISO7-1 Thread/Thread	6507603000		S\$15,257.77
2" Groove/Groove (ANSI/AWWA C606)	6507023000		S\$13,870.70
2" Flange/Flange Class 150 (ASME B16.5)	6507123000		S\$15,257.77
2" Flange/Flange Class 300 (ASME B16.5)	6507223000		S\$15,257.77
2" Flange/Flange PN16 (ISO 7005-2)	6507323000		S\$15,257.77
2" NPT Thread/Thread (ANSI/ASME B1.20.1)	6507523000		S\$15,257.77
2" ISO7-1 Thread/Thread	6507623000		S\$15,257.77
2-1/2" Groove/Groove (ANSI/AWWA C606)	6507013000		S\$17,338.38
2-1/2" Flange/Flange Class 150 (ASME B16.5)	6507113000		S\$19,072.22
2-1/2" Flange/Flange Class 300 (ASME B16.5)	6507213000		S\$19,072.22
2-1/2" Flange/Flange PN16 (ISO 7005-2)	6507313000		S\$19,072.22
2-1/2" NPT Thread/Thread (ANSI/ASME B1.20.1)	6507513000		S\$19,072.22
2-1/2" ISO7-1 Thread/Thread	6507613000		S\$19,072.22
76MM Groove/Groove (ANSI/AWWA C606)	6507073000		S\$17,338.38
3" Groove/Groove (ANSI/AWWA C606)	6507033000		S\$17,338.38
3" Flange/Flange Class 150 (ASME B16.5)	6507133000		S\$19,072.22
3" Flange/Flange Class 300 (ASME B16.5)	6507233000		S\$19,072.22
3" Flange/Flange PN16 (ISO 7005-2)	6507333000		S\$19,072.22
3" NPT Thread/Thread (ANSI/ASME B1.20.1)	6507533000		S\$19,072.22
3" ISO7-1 Thread/Thread	6507633000		S\$19,072.22
4" Groove/Groove (ANSI/AWWA C606)	6507043000		S\$19,072.22
4" Flange/Flange Class 150 (ASME B16.5)	6507143000		S\$20,979.43
4" Flange/Flange Class 300 (ASME B16.5)	6507243000		S\$20,979.43
4" Flange/Flange PN16 (ISO 7005-2)	6507343000		S\$20,979.43
6" Groove/Groove (ANSI/AWWA C606)	6507063000		S\$22,539.89
6" Flange/Flange Class 150 (ASME B16.5)	6507163000		S\$24,793.88
6" Flange/Flange Class 300 (ASME B16.5)	6507263000		S\$24,793.88
6" Flange/Flange PN16 (ISO 7005-2)	6507363000		S\$24,793.88
165MM Groove/Groove (ANSI/AWWA C606)	6507053000		S\$22,539.89
8" Groove/Groove (ANSI/AWWA C606)	6507083000		S\$48,162.16
8" Flange/Flange Class 150 (ASME B16.5)	6507183000		S\$52,978.38
8" Flange/Flange Class 300 (ASME B16.5)	6507283000		S\$52,978.38
8" Flange/Flange PN16 (ISO 7005-2)	6507383000		S\$52,978.38

**Notes:**

Base trim does not include drain trim, alarm test line, or control valve. Please see the last page of the DDV section for optional trim components.



**DDV DIAPHRAGM  
 DELUGE REMOTE  
 RESET PRESSURE  
 REGULATING**

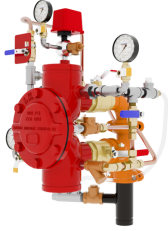
- See Bulletin 550

Description	Part Number	Short Code	List Price
<b>MODEL DDV DELUGE VALVE - REMOTE RESET PRESSURE REGULATING</b>			
1-1/2" Groove/Groove (ANSI/AWWA C606)	6507007000		S\$19,072.22
1-1/2" Flange/Flange Class 150 (ASME B16.5)	6507107000		S\$20,979.43
1-1/2" Flange/Flange Class 300 (ASME B16.5)	6507207000		S\$20,979.43
1-1/2" Flange/Flange PN16 (ISO 7005-2)	6507307000		S\$20,979.43
1-1/2" NPT Thread/Thread (ANSI/ASME B1.20.1)	6507507000		S\$20,979.43
1-1/2" ISO7-1 Thread/Thread	6507607000		S\$20,979.43
2" Groove/Groove (ANSI/AWWA C606)	6507027000		S\$19,072.22
2" Flange/Flange Class 150 (ASME B16.5)	6507127000		S\$20,979.43
2" Flange/Flange Class 300 (ASME B16.5)	6507227000		S\$20,979.43
2" Flange/Flange PN16 (ISO 7005-2)	6507327000		S\$20,979.43
2" NPT Thread/Thread (ANSI/ASME B1.20.1)	6507527000		S\$20,979.43
2" ISO7-1 Thread/Thread	6507627000		S\$20,979.43
2-1/2" Groove/Groove (ANSI/AWWA C606)	6507017000		S\$20,806.05
2-1/2" Flange/Flange Class 150 (ASME B16.5)	6507117000		S\$22,886.66
2-1/2" Flange/Flange Class 300 (ASME B16.5)	6507217000		S\$22,886.66
2-1/2" Flange/Flange PN16 (ISO 7005-2)	6507317000		S\$22,886.66
2-1/2" NPT Thread/Thread (ANSI/ASME B1.20.1)	6507517000		S\$22,886.66
2-1/2" ISO7-1 Thread/Thread	6507617000		S\$22,886.66
76MM Groove/Groove (ANSI/AWWA C606)	6507077000		S\$20,806.05
3" Groove/Groove (ANSI/AWWA C606)	6507037000		S\$20,806.05
3" Flange/Flange Class 150 (ASME B16.5)	6507137000		S\$22,886.66
3" Flange/Flange Class 300 (ASME B16.5)	6507237000		S\$22,886.66
3" Flange/Flange PN16 (ISO 7005-2)	6507337000		S\$22,886.66
3" NPT Thread/Thread (ANSI/ASME B1.20.1)	6507537000		S\$22,886.66
3" ISO7-1 Thread/Thread	6507637000		S\$22,886.66
4" Groove/Groove (ANSI/AWWA C606)	6507047000		S\$22,539.89
4" Flange/Flange Class 150 (ASME B16.5)	6507147000		S\$24,793.88
4" Flange/Flange Class 300 (ASME B16.5)	6507247000		S\$24,793.88
4" Flange/Flange PN16 (ISO 7005-2)	6507347000		S\$24,793.88
6" Groove/Groove (ANSI/AWWA C606)	6507067000		S\$26,007.57
6" Flange/Flange Class 150 (ASME B16.5)	6507167000		S\$28,608.32
6" Flange/Flange Class 300 (ASME B16.5)	6507267000		S\$28,608.32
6" Flange/Flange PN16 (ISO 7005-2)	6507367000		S\$28,608.32
165MM Groove/Groove (ANSI/AWWA C606)	6507057000		S\$26,007.57

**Notes:**

Base trim does not include drain trim, alarm test line, or control valve. Please see the last page of the DDV section for optional trim components.





**DDV DIAPHRAGM  
 DELUGE DRY  
 PILOT PRESSURE  
 REGULATING**

- See Bulletin 550
- Dry Pilot Pressure Regulating

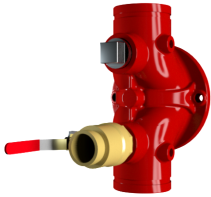
Description	Part Number	Short Code	List Price
<b>MODEL DDV DELUGE VALVE - DRY PILOT PRESSURE REGULATING</b>			
1-1/2" Groove/Groove (ANSI/AWWA C606)	6507005000		S\$17,338.38
1-1/2" Flange/Flange Class 150 (ASME B16.5)	6507105000		S\$19,072.22
1-1/2" Flange/Flange Class 300 (ASME B16.5)	6507205000		S\$19,072.22
1-1/2" Flange/Flange PN16 (ISO 7005-2)	6507305000		S\$19,072.22
1-1/2" NPT Thread/Thread (ANSI/ASME B1.20.1)	6507505000		S\$19,072.22
1-1/2" ISO7-1 Thread/Thread	6507605000		S\$19,072.22
2" Groove/Groove (ANSI/AWWA C606)	6507025000		S\$17,338.38
2" Flange/Flange Class 150 (ASME B16.5)	6507125000		S\$19,072.22
2" Flange/Flange Class 300 (ASME B16.5)	6507225000		S\$19,072.22
2" Flange/Flange PN16 (ISO 7005-2)	6507325000		S\$19,072.22
2" NPT Thread/Thread (ANSI/ASME B1.20.1)	6507525000		S\$19,072.22
2" ISO7-1 Thread/Thread	6507625000		S\$19,072.22
2-1/2" Groove/Groove (ANSI/AWWA C606)	6507015000		S\$19,939.14
2-1/2" Flange/Flange Class 150 (ASME B16.5)	6507115000		S\$21,933.05
2-1/2" Flange/Flange Class 300 (ASME B16.5)	6507215000		S\$21,933.05
2-1/2" Flange/Flange PN16 (ISO 7005-2)	6507315000		S\$21,933.05
2-1/2" NPT Thread/Thread (ANSI/ASME B1.20.1)	6507515000		S\$21,933.05
2-1/2" ISO7-1 Thread/Thread	6507615000		S\$21,933.05
76MM Groove/Groove (ANSI/AWWA C606)	6507075000		S\$19,939.14
3" Groove/Groove (ANSI/AWWA C606)	6507035000		S\$19,939.14
3" Flange/Flange Class 150 (ASME B16.5)	6507135000		S\$21,933.05
3" Flange/Flange Class 300 (ASME B16.5)	6507235000		S\$21,933.05
3" Flange/Flange PN16 (ISO 7005-2)	6507335000		S\$21,933.05
3" NPT Thread/Thread (ANSI/ASME B1.20.1)	6507535000		S\$21,933.05
3" ISO7-1 Thread/Thread	6507635000		S\$21,933.05
4" Groove/Groove (ANSI/AWWA C606)	6507045000		S\$22,539.89
4" Flange/Flange Class 150 (ASME B16.5)	6507145000		S\$24,793.88
4" Flange/Flange Class 300 (ASME B16.5)	6507245000		S\$24,793.88
4" Flange/Flange PN16 (ISO 7005-2)	6507345000		S\$24,793.88
6" Groove/Groove (ANSI/AWWA C606)	6507065000		S\$26,007.57
6" Flange/Flange Class 150 (ASME B16.5)	6507165000		S\$28,608.32
6" Flange/Flange Class 300 (ASME B16.5)	6507265000		S\$28,608.32
6" Flange/Flange PN16 (ISO 7005-2)	6507365000		S\$28,608.32
165MM Groove/Groove (ANSI/AWWA C606)	6507055000		S\$26,007.57

**Notes:**

Base trim does not include drain trim, alarm test line, or control valve. Please see the last page of the DDV section for optional trim components.

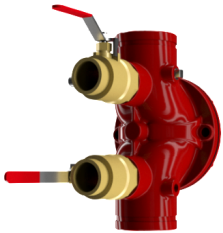
## DDV DIAPHRAGM DELUGE VALVE

- Bulletin 550

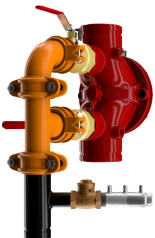


## LOWER BALL VALVE

- Lower & Upper  
 Ball Valve Option  
 X 2



## DUAL BALL VALVE



## FULL DRAIN VALVE

Description	Part Number	Short Code	List Price
<b>DRAIN TRIM OPTIONS- SELECT ONE</b>			
Lower Ball Valve - 1-1/2" & 2"	77000300		S\$ 260.08
Lower Ball Valve - 2-1/2", 3"	77000299		S\$ 606.84
Lower Ball Valve - 4", 6", 8"	9884011D		S\$ 1,040.30
Lower & Upper Ball Valve -1 -1/2" & 2"	77000300		S\$ 260.08
Lower & Upper Ball Valve - 2-1/2", 3"	77000299		S\$ 606.84
Lower & Upper Ball Valve - 4", 6", 8"	9884011D		S\$ 1,040.30
Full Drain Trim - 1-1/2" & 2"	77037003		S\$ 1,127.00
Full Drain Trim - 2-1/2", 3"	77037004		S\$ 1,907.22
Full Drain Trim - 4", 6", 8"	77037002		S\$ 3,987.82
<b>OPTIONAL TRIM</b>			
DDV Alarm Test Kit MTO	6501040001		S\$ 693.54
600 psi Gauge	98248005		S\$ 174.99
<b>CONTROL VALVES (UPPER &amp; LOWER)</b>			
Control Valve - 2-1/2"	77000302		S\$ 1,560.46
Control Valve - 3"	77000303		S\$ 1,560.46
Control Valve - 4"	77000304		S\$ 1,733.84
Control Valve - 6"	77000306		S\$ 2,253.99
S/A Control Valve 8"	77000308		S\$ 3,162.65
Control Valve w/Inlet Spool - 2-1/2"	77000271		S\$ 2,080.61
Control Valve w/Inlet Spool - 3"	77000273		S\$ 2,080.61
Control Valve w/Inlet Spool - 4"	77000274		S\$ 2,253.99
Control Valve w/Inlet Spool - 6"	77000276		S\$ 3,120.91
DDV S/A Control Valve 8" Winlet Spool	77000278		S\$ 4,368.31



## DELUGE VALVES

- **MODEL DDX DELUGE VALVE**
- Electric, Wet Pilot Line, and Dry Pilot Line Trims
- See Bulletin 519

Description	Part Number	Short Code	List Price
<b>MODEL DDX - DELUGE VALVES FULLY ASSEMBLED - ELECTRIC TRIM</b>			
2" Electric Release	6522904110	2DDXFEN	S\$ 20,130.28
2" Electric Release w/Control Valve	6522908110	2DDXFEVN	S\$ 22,298.80
2-1/2" Electric Release	6521904110	25DDXFEN	S\$ 20,130.28
2-1/2" Electric Release w/Control Valve	6521908110	25DDXFEVN	S\$ 22,298.80
3" Electric Release	6523904110	3DDXFEN	S\$ 20,749.57
3" Electric Release w/Control Valve	6523908110	3DDXFEVN	S\$ 22,607.46
76MM Electric Release	6525905110	76DDXFEN	S\$ 20,130.28
4" Electric Release	6524904110	4DDXFEN	S\$ 20,773.18
4" Electric Release w/Control Valve	6524908110	4DDXFEVN	S\$ 22,923.97
6" Electric Release	6526904110	6DDXFEN	S\$ 23,093.05
6" Electric Release w/Control Valve	6526908110	6DDXFEVN	S\$ 25,166.80
165MM, DDX, Valve, w/Electric	6527905110	165DDXFWN	S\$ 23,093.05
8" Electric Release	6528904110	8DDXFEN	S\$ 31,043.58
8" Electric Release w/Control Valve	6528908110	8DDXFEVN	S\$ 35,218.99
<b>MODEL DDX - DELUGE VALVES FULLY ASSEMBLED - WET PILOT LINE TRIM</b>			
2" Wet Pilot Line	6522704010	2DDXFWN	S\$ 17,344.46
2" Wet Pilot Line w/Control Valve	6522708010	2DDXFWVN	S\$ 19,511.00
2-1/2" Wet Pilot Line	6521704010	25DDXFWN	S\$ 17,344.46
2-1/2" Wet Pilot Line w/Control Valve	6521708010	25DDXFWVN	S\$ 19,511.00
3" Wet Pilot Line	6523704010	3DDXFWN	S\$ 17,963.74
3" Wet Pilot Line w/Control Valve	6523708010	3DDXFWVN	S\$ 20,130.28
76MM Wet Pilot Line	6525705010	76DDXFWN	S\$ 17,344.46
4" Wet Pilot Line	6524704010	4DDXFWN	S\$ 18,394.28
4" Wet Pilot Line w/Control Valve	6524708010	4DDXFWVN	S\$ 20,547.07
6" Wet Pilot Line	6526704010	6DDXFWN	S\$ 20,714.19
6" Wet Pilot Line w/Control Valve	6526708010	6DDXFWVN	S\$ 23,732.00
165MM, DDX, Valve, w/Wet Pilot	6527705010	165DDXFWN	S\$ 20,713.93
8" Wet Pilot Line	6528704010	8DDXFWN	S\$ 30,190.32
8" Wet Pilot Line w/Control Valve	6528708010	8DDXFWVN	S\$ 36,440.26
<b>MODEL DDX - DELUGE VALVES FULLY ASSEMBLED - DRY PILOT LINE TRIM</b>			
2" Dry Pilot Line	6522804010	2DDXFDPN	S\$ 20,440.92
2" Dry Pilot Line w/Control Valve	6522808010	2DDXFDPVN	S\$ 22,607.46
2-1/2" Dry Pilot Line	6521804010	25DDXFDPN	S\$ 20,440.92
2-1/2" Dry Pilot Line w/Control Valve	6521808010	25DDXFDPVN	S\$ 22,607.46
3" Dry Pilot Line	6523804010	3DDXFDPN	S\$ 21,060.22
3" Dry Pilot Line w/Control Valve	6523808010	3DDXFDPVN	S\$ 23,226.74
76MM Dry Pilot Line	6525805010	76DDXFDPN	S\$ 20,440.92
4" Dry Pilot Line	6524804010	4DDXFDPN	S\$ 21,353.14
4" Dry Pilot Line w/Control Valve	6524808010	4DDXFDPVN	S\$ 23,507.86
6" Dry Pilot Line	6526804010	6DDXFDPN	S\$ 23,674.99
6" Dry Pilot Line w/Control Valve	6526808010	6DDXFDPVN	S\$ 26,690.85
165MM, DDX, Valve, w/ Dry Pilot line	6527805010	165DDXFDPN	S\$ 23,674.99
8" Dry Pilot Line	6528804010	8DDXFDPN	S\$ 31,611.76
8" Dry Pilot Line w/Control Valve	6528808010	8DDXFDPVN	S\$ 38,427.89

**Notes:**