

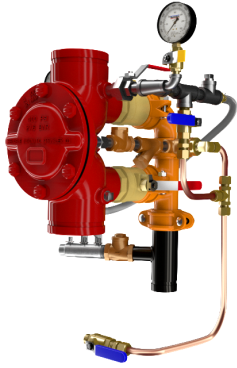
**DDV DIAPHRAGM  
 DELUGE  
 ELECTRIC TRIM**

- See Bulletins 551
- DDV Electric-Uses 175 PSI Solenoid Valve

Description	Part Number	Short Code	List Price
<b>MODEL DDV DELUGE VALVES FULLY ASSEMBLED - ELECTRIC TRIM</b>			
1-1/2" Groove/Groove (ANSI/AWWA C606)	6507002000	.	£ 5,831.99
1-1/2" Flange/Flange Class 150 (ASME B16.5)	6507102000		£ 6,415.19
1-1/2" Flange/Flange Class 300 (ASME B16.5)	6507202000		£ 6,415.19
1-1/2" Flange/Flange PN16 (ISO 7005-2)	6507302000		£ 6,415.19
1-1/2" NPT Thread/Thread (ANSI/ASME B1.20.1)	6507502000		£ 6,415.19
1-1/2" ISO7-1 Thread/Thread	6507602000		£ 6,415.19
2" Groove/Groove (ANSI/AWWA C606)	6507022000		£ 5,831.99
2" Flange/Flange Class 150 (ASME B16.5)	6507122000		£ 6,415.19
2" Flange/Flange Class 300 (ASME B16.5)	6507222000		£ 6,415.19
2" Flange/Flange PN16 (ISO 7005-2)	6507322000		£ 6,415.19
2" NPT Thread/Thread (ANSI/ASME B1.20.1)	6507522000		£ 6,415.19
2" ISO7-1 Thread/Thread	6507622000		£ 6,415.19
2-1/2" Groove/Groove (ANSI/AWWA C606)	6507012000		£ 6,803.99
2-1/2" Flange/Flange Class 150 (ASME B16.5)	6507112000		£ 7,484.39
2-1/2" Flange/Flange Class 300 (ASME B16.5)	6507212000		£ 7,484.39
2-1/2" Flange/Flange PN16 (ISO 7005-2)	6507312000		£ 7,484.39
2-1/2" NPT Thread/Thread (ANSI/ASME B1.20.1)	6507512000		£ 7,484.39
2-1/2" ISO7-1 Thread/Thread	6507612000		£ 7,484.39
76MM Groove/Groove (ANSI/AWWA C606)	6507072000		£ 6,803.99
3" Groove/Groove (ANSI/AWWA C606)	6507032000		£ 6,803.99
3" Flange/Flange Class 150 (ASME B16.5)	6507132000		£ 7,484.39
3" Flange/Flange Class 300 (ASME B16.5)	6507232000		£ 7,484.39
3" Flange/Flange PN16 (ISO 7005-2)	6507332000		£ 7,484.39
3" NPT Thread/Thread (ANSI/ASME B1.20.1)	6507532000		£ 7,484.39
3" ISO7-1 Thread/Thread	6507632000		£ 7,484.39
4" Groove/Groove (ANSI/AWWA C606)	6507042000		£ 8,261.99
4" Flange/Flange Class 150 (ASME B16.5)	6507142000		£ 9,088.19
4" Flange/Flange Class 300 (ASME B16.5)	6507242000		£ 9,088.19
4" Flange/Flange PN16 (ISO 7005-2)	6507342000		£ 9,088.19
6" Groove/Groove (ANSI/AWWA C606)	6507062000		£ 10,691.99
6" Flange/Flange Class 150 (ASME B16.5)	6507162000		£ 11,761.19
6" Flange/Flange Class 300 (ASME B16.5)	6507262000		£ 11,761.19
6" Flange/Flange PN16 (ISO 7005-2)	6507362000		£ 11,761.19
165MM Groove/Groove (ANSI/AWWA C606)	6507052000		£ 10,691.99
8" Groove/Groove (ANSI/AWWA C606)	6507082000		£ 22,499.98
8" Flange/Flange Class 150 (ASME B16.5)	6507182000		£ 24,749.98
8" Flange/Flange/Class 300 (ASME B16.5)	6507282000		£ 24,749.98
8" Flange/Flange PN16 (ISO 7005-2)	6507382000		£ 24,749.98

**Notes:**

Base trim does not include drain trim, alarm test line, or control valve. Please see the last page of the DDV section for optional trim components.



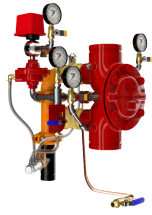
**DDV DIAPHRAGM  
 DELUGE WET  
 PILOT LINE**

- See Bulletin 551

Description	Part Number	Short Code	List Price
<b>MODEL DDV DELUGE VALVES FULLY ASSEMBLED - WET PILOT TRIM</b>			
1-1/2" Groove/Groove (ANSI/AWWA C606)	6507000000		£ 4,860.00
1-1/2" Flange/Flange Class 150 (ASME B16.5)	6507100000		£ 5,345.99
1-1/2" Flange/Flange Class 300 (ASME B16.5)	6507200000		£ 5,345.99
1-1/2" Flange/Flange PN16 (ISO 7005-2)	6507300000		£ 5,345.99
1-1/2" NPT Thread/Thread (ANSI/ASME B1.20.1)	6507500000		£ 5,345.99
1-1/2" ISO7-1 Thread/Thread	6507600000		£ 5,345.99
2" Groove/Groove (ANSI/AWWA C606)	6507020000		£ 4,860.00
2" Flange/Flange Class 150 (ASME B16.5)	6507120000		£ 5,345.99
2" Flange/Flange Class 300 (ASME B16.5)	6507220000		£ 5,345.99
2" Flange/Flange PN16 (ISO 7005-2)	6507320000		£ 5,345.99
2" NPT Thread/Thread (ANSI/ASME B1.20.1)	6507520000		£ 5,345.99
2" ISO7-1 Thread/Thread	6507620000		£ 5,345.99
2-1/2" Groove/Groove (ANSI/AWWA C606)	6507010000		£ 5,345.99
2-1/2" Flange/Flange Class 150 (ASME B16.5)	6507110000		£ 5,880.59
2-1/2" Flange/Flange Class 300 (ASME B16.5)	6507210000		£ 5,880.59
2-1/2" Flange/Flange PN16 (ISO 7005-2)	6507310000		£ 5,880.59
2-1/2" NPT Thread/Thread (ANSI/ASME B1.20.1)	6507510000		£ 5,880.59
2-1/2" ISO7-1 Thread/Thread	6507610000		£ 5,880.59
76MM Groove/Groove (ANSI/AWWA C606)	6507070000		£ 5,345.99
3" Groove/Groove (ANSI/AWWA C606)	6507030000		£ 5,345.99
3" Flange/Flange Class 150 (ASME B16.5)	6507130000		£ 5,880.59
3" Flange/Flange Class 300 (ASME B16.5)	6507230000		£ 5,880.59
3" Flange/Flange PN16 (ISO 7005-2)	6507330000		£ 5,880.59
3" NPT Thread/Thread (ANSI/ASME B1.20.1)	6507530000		£ 5,880.59
3" ISO7-1 Thread/Thread	6507630000		£ 5,880.59
4" Groove/Groove (ANSI/AWWA C606)	6507040000		£ 6,317.99
4" Flange/Flange Class 150 (ASME B16.5)	6507140000		£ 6,949.80
4" Flange/Flange Class 300 (ASME B16.5)	6507240000		£ 6,949.80
4" Flange/Flange PN16 (ISO 7005-2)	6507340000		£ 6,949.80
6" Groove/Groove (ANSI/AWWA C606)	6507060000		£ 7,775.99
6" Flange/Flange Class 150 (ASME B16.5)	6507160000		£ 8,553.59
6" Flange/Flange Class 300 (ASME B16.5)	6507260000		£ 8,553.59
6" Flange/Flange PN16 (ISO 7005-2)	6507360000		£ 8,553.59
165MM Groove/Groove (ANSI/AWWA C606)	6507050000		£ 7,775.99
8" Groove/Groove (ANSI/AWWA C606)	6507080000		£ 17,099.98
8" Flange/Flange Class 150 (ASME B16.5)	6507180000		£ 18,809.98
8" Flange/Flange Class 300 (ASME B16.5)	6507280000		£ 18,809.98
8" Flange/Flange PN16 (ISO 7005-2)	6507380000		£ 18,809.98

**Notes:**

Base trim does not include drain trim, alarm test line, or control valve. Please see the last page of the DDV section for optional trim components.



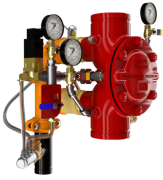
**DDV DIAPHRAGM  
 DELUGE DRY  
 PILOT LINE**

- See Bulletin 551

Description	Part Number	Short Code	List Price
<b>MODEL DDV DELUGE VALVES FULLY ASSEMBLED - DRY PILOT TRIM</b>			
1-1/2" Groove/Groove (ANSI/AWWA C606)	6507001000		£ 7,775.99
1-1/2" Flange/Flange Class 150 (ASME B16.5)	6507101000		£ 8,553.59
1-1/2" Flange/Flange Class 300 (ASME B16.5)	6507201000		£ 8,553.59
1-1/2" Flange/Flange PN16 (ISO 7005-2)	6507301000		£ 8,553.59
1-1/2" NPT Thread/Thread (ANSI/ASME B1.20.1)	6507501000		£ 8,553.59
1-1/2" ISO7-1 Thread/Thread	6507601000		£ 8,553.59
2" Groove/Groove (ANSI/AWWA C606)	6507021000		£ 7,775.99
2" Flange/Flange Class 150 (ASME B16.5)	6507121000		£ 8,553.59
2" Flange/Flange Class 300 (ASME B16.5)	6507221000		£ 8,553.59
2" Flange/Flange PN16 (ISO 7005-2)	6507321000		£ 8,553.59
2" NPT Thread/Thread (ANSI/ASME B1.20.1)	6507521000		£ 8,553.59
2" ISO7-1 Thread/Thread	6507621000		£ 8,553.59
2-1/2" Groove/Groove (ANSI/AWWA C606)	6507011000		£ 9,233.99
2-1/2" Flange/Flange Class 150 (ASME B16.5)	6507111000		£10,157.39
2-1/2" Flange/Flange Class 300 (ASME B16.5)	6507211000		£10,157.39
2-1/2" Flange/Flange PN16 (ISO 7005-2)	6507311000		£10,157.39
2-1/2" NPT Thread/Thread (ANSI/ASME B1.20.1)	6507511000		£10,157.39
2-1/2" ISO7-1 Thread/Thread	6507611000		£10,157.39
76MM Groove/Groove (ANSI/AWWA C606)	6507071000		£ 9,233.99
3" Groove/Groove (ANSI/AWWA C606)	6507031000		£ 9,233.99
3" Flange/Flange Class 150 (ASME B16.5)	6507131000		£10,157.39
3" Flange/Flange Class 300 (ASME B16.5)	6507231000		£10,157.39
3" Flange/Flange PN16 (ISO 7005-2)	6507331000		£10,157.39
3" NPT Thread/Thread (ANSI/ASME B1.20.1)	6507531000		£10,157.39
3" ISO7-1 Thread/Thread	6507631000		£10,157.39
4" Groove/Groove (ANSI/AWWA C606)	6507041000		£10,691.99
4" Flange/Flange Class 150 (ASME B16.5)	6507141000		£11,761.19
4" Flange/Flange Class 300 (ASME B16.5)	6507241000		£11,761.19
4" Flange/Flange PN16 (ISO 7005-2)	6507341000		£11,761.19
6" Groove/Groove (ANSI/AWWA C606)	6507061000		£12,635.99
6" Flange/Flange Class 150 (ASME B16.5)	6507161000		£13,899.58
6" Flange/Flange Class 300 (ASME B16.5)	6507261000		£13,899.58
6" Flange/Flange PN16 (ISO 7005-2)	6507361000		£13,899.58
165MM Groove/Groove (ANSI/AWWA C606)	6507051000		£12,635.99
8" Groove/Groove (ANSI/AWWA C606)	6507081000		£22,499.98
8" Flange/Flange Class 150 (ASME B16.5)	6507181000		£24,749.98
8" Flange/Flange Class 300 (ASME B16.5)	6507281000		£24,749.98
8" Flange/Flange PN16 (ISO 7005-2)	6507381000		£24,749.98

**Notes:**

Base trim does not include drain trim, alarm test line, or control valve. Please see the last page of the DDV section for optional trim components.



## DDV DIAPHRAGM DELUGE REMOTE RESET

- See Bulletin 550

Description	Part Number	Short Code	List Price
<b>MODEL DDV DELUGE VALVE - REMOTE RESET</b>			
1-1/2" Groove/Groove (ANSI/AWWA C606)	6507003000		£ 7,775.99
1-1/2" Flange/Flange Class 150 (ASME B16.5)	6507103000		£ 8,553.59
1-1/2" Flange/Flange Class 300 (ASME B16.5)	6507203000		£ 8,553.59
1-1/2" Flange/Flange PN16 (ISO 7005-2)	6507303000		£ 8,553.59
1-1/2" NPT Thread/Thread (ANSI/ASME B1.20.1)	6507503000		£ 8,553.59
1-1/2" ISO7-1 Thread/Thread	6507603000		£ 8,553.59
2" Groove/Groove (ANSI/AWWA C606)	6507023000		£ 7,775.99
2" Flange/Flange Class 150 (ASME B16.5)	6507123000		£ 8,553.59
2" Flange/Flange Class 300 (ASME B16.5)	6507223000		£ 8,553.59
2" Flange/Flange PN16 (ISO 7005-2)	6507323000		£ 8,553.59
2" NPT Thread/Thread (ANSI/ASME B1.20.1)	6507523000		£ 8,553.59
2" ISO7-1 Thread/Thread	6507623000		£ 8,553.59
2-1/2" Groove/Groove (ANSI/AWWA C606)	6507013000		£ 9,719.99
2-1/2" Flange/Flange Class 150 (ASME B16.5)	6507113000		£10,691.99
2-1/2" Flange/Flange Class 300 (ASME B16.5)	6507213000		£10,691.99
2-1/2" Flange/Flange PN16 (ISO 7005-2)	6507313000		£10,691.99
2-1/2" NPT Thread/Thread (ANSI/ASME B1.20.1)	6507513000		£10,691.99
2-1/2" ISO7-1 Thread/Thread	6507613000		£10,691.99
76MM Groove/Groove (ANSI/AWWA C606)	6507073000		£ 9,719.99
3" Groove/Groove (ANSI/AWWA C606)	6507033000		£ 9,719.99
3" Flange/Flange Class 150 (ASME B16.5)	6507133000		£10,691.99
3" Flange/Flange Class 300 (ASME B16.5)	6507233000		£10,691.99
3" Flange/Flange PN16 (ISO 7005-2)	6507333000		£10,691.99
3" NPT Thread/Thread (ANSI/ASME B1.20.1)	6507533000		£10,691.99
3" ISO7-1 Thread/Thread	6507633000		£10,691.99
4" Groove/Groove (ANSI/AWWA C606)	6507043000		£10,691.99
4" Flange/Flange Class 150 (ASME B16.5)	6507143000		£11,761.19
4" Flange/Flange Class 300 (ASME B16.5)	6507243000		£11,761.19
4" Flange/Flange PN16 (ISO 7005-2)	6507343000		£11,761.19
6" Groove/Groove (ANSI/AWWA C606)	6507063000		£12,635.99
6" Flange/Flange Class 150 (ASME B16.5)	6507163000		£13,899.58
6" Flange/Flange Class 300 (ASME B16.5)	6507263000		£13,899.58
6" Flange/Flange PN16 (ISO 7005-2)	6507363000		£13,899.58
165MM Groove/Groove (ANSI/AWWA C606)	6507053000		£12,635.99
8" Groove/Groove (ANSI/AWWA C606)	6507083000		£26,999.97
8" Flange/Flange Class 150 (ASME B16.5)	6507183000		£29,699.97
8" Flange/Flange Class 300 (ASME B16.5)	6507283000		£29,699.97
8" Flange/Flange PN16 (ISO 7005-2)	6507383000		£29,699.97

**Notes:**

Base trim does not include drain trim, alarm test line, or control valve. Please see the last page of the DDV section for optional trim components.



**DDV DIAPHRAGM  
 DELUGE REMOTE  
 RESET PRESSURE  
 REGULATING**

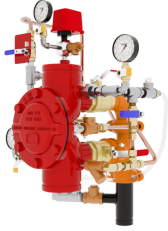
- See Bulletin 550

Description	Part Number	Short Code	List Price
<b>MODEL DDV DELUGE VALVE - REMOTE RESET PRESSURE REGULATING</b>			
1-1/2" Groove/Groove (ANSI/AWWA C606)	6507007000		£ 10,691.99
1-1/2" Flange/Flange Class 150 (ASME B16.5)	6507107000		£ 11,761.19
1-1/2" Flange/Flange Class 300 (ASME B16.5)	6507207000		£ 11,761.19
1-1/2" Flange/Flange PN16 (ISO 7005-2)	6507307000		£ 11,761.19
1-1/2" NPT Thread/Thread (ANSI/ASME B1.20.1)	6507507000		£ 11,761.19
1-1/2" ISO7-1 Thread/Thread	6507607000		£ 11,761.19
2" Groove/Groove (ANSI/AWWA C606)	6507027000		£ 10,691.99
2" Flange/Flange Class 150 (ASME B16.5)	6507127000		£ 11,761.19
2" Flange/Flange Class 300 (ASME B16.5)	6507227000		£ 11,761.19
2" Flange/Flange PN16 (ISO 7005-2)	6507327000		£ 11,761.19
2" NPT Thread/Thread (ANSI/ASME B1.20.1)	6507527000		£ 11,761.19
2" ISO7-1 Thread/Thread	6507627000		£ 11,761.19
2-1/2" Groove/Groove (ANSI/AWWA C606)	6507017000		£ 11,663.99
2-1/2" Flange/Flange Class 150 (ASME B16.5)	6507117000		£ 12,830.39
2-1/2" Flange/Flange Class 300 (ASME B16.5)	6507217000		£ 12,830.39
2-1/2" Flange/Flange PN16 (ISO 7005-2)	6507317000		£ 12,830.39
2-1/2" NPT Thread/Thread (ANSI/ASME B1.20.1)	6507517000		£ 12,830.39
2-1/2" ISO7-1 Thread/Thread	6507617000		£ 12,830.39
76MM Groove/Groove (ANSI/AWWA C606)	6507077000		£ 11,663.99
3" Groove/Groove (ANSI/AWWA C606)	6507037000		£ 11,663.99
3" Flange/Flange Class 150 (ASME B16.5)	6507137000		£ 12,830.39
3" Flange/Flange Class 300 (ASME B16.5)	6507237000		£ 12,830.39
3" Flange/Flange PN16 (ISO 7005-2)	6507337000		£ 12,830.39
3" NPT Thread/Thread (ANSI/ASME B1.20.1)	6507537000		£ 12,830.39
3" ISO7-1 Thread/Thread	6507637000		£ 12,830.39
4" Groove/Groove (ANSI/AWWA C606)	6507047000		£ 12,635.99
4" Flange/Flange Class 150 (ASME B16.5)	6507147000		£ 13,899.58
4" Flange/Flange Class 300 (ASME B16.5)	6507247000		£ 13,899.58
4" Flange/Flange PN16 (ISO 7005-2)	6507347000		£ 13,899.58
6" Groove/Groove (ANSI/AWWA C606)	6507067000		£ 14,579.99
6" Flange/Flange Class 150 (ASME B16.5)	6507167000		£ 16,037.98
6" Flange/Flange Class 300 (ASME B16.5)	6507267000		£ 16,037.98
6" Flange/Flange PN16 (ISO 7005-2)	6507367000		£ 16,037.98
165MM Groove/Groove (ANSI/AWWA C606)	6507057000		£ 14,579.99

**Notes:**

Base trim does not include drain trim, alarm test line, or control valve. Please see the last page of the DDV section for optional trim components.





**DDV DIAPHRAGM  
 DELUGE DRY  
 PILOT PRESSURE  
 REGULATING**

- See Bulletin 550
- Dry Pilot Pressure Regulating

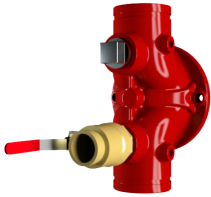
Description	Part Number	Short Code	List Price
<b>MODEL DDV DELUGE VALVE - DRY PILOT PRESSURE REGULATING</b>			
1-1/2" Groove/Groove (ANSI/AWWA C606)	6507005000		£ 9,719.99
1-1/2" Flange/Flange Class 150 (ASME B16.5)	6507105000		£ 10,691.99
1-1/2" Flange/Flange Class 300 (ASME B16.5)	6507205000		£ 10,691.99
1-1/2" Flange/Flange PN16 (ISO 7005-2)	6507305000		£ 10,691.99
1-1/2" NPT Thread/Thread (ANSI/ASME B1.20.1)	6507505000		£ 10,691.99
1-1/2" ISO7-1 Thread/Thread	6507605000		£ 10,691.99
2" Groove/Groove (ANSI/AWWA C606)	6507025000		£ 9,719.99
2" Flange/Flange Class 150 (ASME B16.5)	6507125000		£ 10,691.99
2" Flange/Flange Class 300 (ASME B16.5)	6507225000		£ 10,691.99
2" Flange/Flange PN16 (ISO 7005-2)	6507325000		£ 10,691.99
2" NPT Thread/Thread (ANSI/ASME B1.20.1)	6507525000		£ 10,691.99
2" ISO7-1 Thread/Thread	6507625000		£ 10,691.99
2-1/2" Groove/Groove (ANSI/AWWA C606)	6507015000		£ 11,177.99
2-1/2" Flange/Flange Class 150 (ASME B16.5)	6507115000		£ 12,295.79
2-1/2" Flange/Flange Class 300 (ASME B16.5)	6507215000		£ 12,295.79
2-1/2" Flange/Flange PN16 (ISO 7005-2)	6507315000		£ 12,295.79
2-1/2" NPT Thread/Thread (ANSI/ASME B1.20.1)	6507515000		£ 12,295.79
2-1/2" ISO7-1 Thread/Thread	6507615000		£ 12,295.79
76MM Groove/Groove (ANSI/AWWA C606)	6507075000		£ 11,177.99
3" Groove/Groove (ANSI/AWWA C606)	6507035000		£ 11,177.99
3" Flange/Flange Class 150 (ASME B16.5)	6507135000		£ 12,295.79
3" Flange/Flange Class 300 (ASME B16.5)	6507235000		£ 12,295.79
3" Flange/Flange PN16 (ISO 7005-2)	6507335000		£ 12,295.79
3" NPT Thread/Thread (ANSI/ASME B1.20.1)	6507535000		£ 12,295.79
3" ISO7-1 Thread/Thread	6507635000		£ 12,295.79
4" Groove/Groove (ANSI/AWWA C606)	6507045000		£ 12,635.99
4" Flange/Flange Class 150 (ASME B16.5)	6507145000		£ 13,899.58
4" Flange/Flange Class 300 (ASME B16.5)	6507245000		£ 13,899.58
4" Flange/Flange PN16 (ISO 7005-2)	6507345000		£ 13,899.58
6" Groove/Groove (ANSI/AWWA C606)	6507065000		£ 14,579.99
6" Flange/Flange Class 150 (ASME B16.5)	6507165000		£ 16,037.98
6" Flange/Flange Class 300 (ASME B16.5)	6507265000		£ 16,037.98
6" Flange/Flange PN16 (ISO 7005-2)	6507365000		£ 16,037.98
165MM Groove/Groove (ANSI/AWWA C606)	6507055000		£ 14,579.99

**Notes:**

Base trim does not include drain trim, alarm test line, or control valve. Please see the last page of the DDV section for optional trim components.

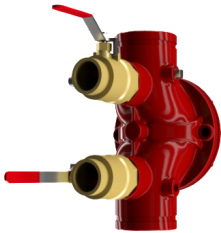
## DDV DIAPHRAGM DELUGE VALVE

- Bulletin 550

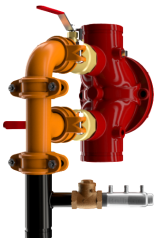


## LOWER BALL VALVE

- Lower & Upper  
 Ball Valve Option  
 X 2



## DUAL BALL VALVE



## FULL DRAIN VALVE

Description	Part Number	Short Code	List Price
<b>DRAIN TRIM OPTIONS- SELECT ONE</b>			
Lower Ball Valve - 1-1/2" & 2"	77000300		£ 145.80
Lower Ball Valve - 2-1/2", 3"	77000299		£ 340.20
Lower Ball Valve - 4", 6", 8"	9884011D		£ 583.20
Lower & Upper Ball Valve -1 -1/2" & 2"	77000300		£ 145.80
Lower & Upper Ball Valve - 2-1/2", 3"	77000299		£ 340.20
Lower & Upper Ball Valve - 4", 6", 8"	9884011D		£ 583.20
Full Drain Trim - 1-1/2" & 2"	77037003		£ 631.80
Full Drain Trim - 2-1/2", 3"	77037004		£ 1,069.20
Full Drain Trim - 4", 6", 8"	77037002		£ 2,235.60
<b>OPTIONAL TRIM</b>			
DDV Alarm Test Kit MTO	6501040001		£ 388.80
600 psi Gauge	98248005		£ 98.10
<b>CONTROL VALVES (UPPER &amp; LOWER)</b>			
Control Valve - 2-1/2"	77000302		£ 874.80
Control Valve - 3"	77000303		£ 874.80
Control Valve - 4"	77000304		£ 972.00
Control Valve - 6"	77000306		£ 1,263.60
S/A Control Valve 8"	77000308		£ 1,773.00
Control Valve w/Inlet Spool - 2-1/2"	77000271		£ 1,166.40
Control Valve w/Inlet Spool - 3"	77000273		£ 1,166.40
Control Valve w/Inlet Spool - 4"	77000274		£ 1,263.60
Control Valve w/Inlet Spool - 6"	77000276		£ 1,749.60
DDV S/A Control Valve 8" Winlet Spool	77000278		£ 2,448.90



## DELUGE VALVES

- **MODEL DDX DELUGE VALVE**
- Electric, Wet Pilot Line, and Dry Pilot Line Trims
- See Bulletin 519

Description	Part Number	Short Code	List Price
<b>MODEL DDX - DELUGE VALVES FULLY ASSEMBLED - ELECTRIC TRIM</b>			
2" Electric Release	6522904110	2DDXFEN	£ 11,285.15
2" Electric Release w/Control Valve	6522908110	2DDXFEVN	£ 12,500.83
2-1/2" Electric Release	6521904110	25DDXFEN	£ 11,285.15
2-1/2" Electric Release w/Control Valve	6521908110	25DDXFEVN	£ 12,500.83
3" Electric Release	6523904110	3DDXFEN	£ 11,632.32
3" Electric Release w/Control Valve	6523908110	3DDXFEVN	£ 12,673.87
76MM Electric Release	6525905110	76DDXFEN	£ 11,285.15
4" Electric Release	6524904110	4DDXFEN	£ 11,645.56
4" Electric Release w/Control Valve	6524908110	4DDXFEVN	£ 12,851.31
6" Electric Release	6526904110	6DDXFEN	£ 12,946.09
6" Electric Release w/Control Valve	6526908110	6DDXFEVN	£ 14,108.64
165MM, DDX, Valve, w/Electric	6527905110	165DDXFVN	£ 12,946.09
8" Electric Release	6528904110	8DDXFEN	£ 17,403.20
8" Electric Release w/Control Valve	6528908110	8DDXFEVN	£ 19,743.96
<b>MODEL DDX - DELUGE VALVES FULLY ASSEMBLED - WET PILOT LINE TRIM</b>			
2" Wet Pilot Line	6522704010	2DDXFVN	£ 9,723.40
2" Wet Pilot Line w/Control Valve	6522708010	2DDXFVNV	£ 10,937.97
2-1/2" Wet Pilot Line	6521704010	25DDXFVN	£ 9,723.40
2-1/2" Wet Pilot Line w/Control Valve	6521708010	25DDXFVNV	£ 10,937.97
3" Wet Pilot Line	6523704010	3DDXFVN	£ 10,070.57
3" Wet Pilot Line w/Control Valve	6523708010	3DDXFVNV	£ 11,285.15
76MM Wet Pilot Line	6525705010	76DDXFVN	£ 9,723.40
4" Wet Pilot Line	6524704010	4DDXFVN	£ 10,311.94
4" Wet Pilot Line w/Control Valve	6524708010	4DDXFVNV	£ 11,518.80
6" Wet Pilot Line	6526704010	6DDXFVN	£ 11,612.49
6" Wet Pilot Line w/Control Valve	6526708010	6DDXFVNV	£ 13,304.29
165MM, DDX, Valve, w/Wet Pilot	6527705010	165DDXFVN	£ 11,612.34
8" Wet Pilot Line	6528704010	8DDXFVN	£ 16,924.86
8" Wet Pilot Line w/Control Valve	6528708010	8DDXFVNV	£ 20,428.61
<b>MODEL DDX - DELUGE VALVES FULLY ASSEMBLED - DRY PILOT LINE TRIM</b>			
2" Dry Pilot Line	6522804010	2DDXFDPN	£ 11,459.29
2" Dry Pilot Line w/Control Valve	6522808010	2DDXFDPVN	£ 12,673.87
2-1/2" Dry Pilot Line	6521804010	25DDXFDPN	£ 11,459.29
2-1/2" Dry Pilot Line w/Control Valve	6521808010	25DDXFDPVN	£ 12,673.87
3" Dry Pilot Line	6523804010	3DDXFDPN	£ 11,806.47
3" Dry Pilot Line w/Control Valve	6523808010	3DDXFDPVN	£ 13,021.04
76MM Dry Pilot Line	6525805010	76DDXFDPN	£ 11,459.29
4" Dry Pilot Line	6524804010	4DDXFDPN	£ 11,970.68
4" Dry Pilot Line w/Control Valve	6524808010	4DDXFDPVN	£ 13,178.64
6" Dry Pilot Line	6526804010	6DDXFDPN	£ 13,272.33
6" Dry Pilot Line w/Control Valve	6526808010	6DDXFDPVN	£ 14,963.04
165MM, DDX, Valve, w/ Dry Pilot line	6527805010	165DDXFDPN	£ 13,272.33
8" Dry Pilot Line	6528804010	8DDXFDPN	£ 17,721.72
8" Dry Pilot Line w/Control Valve	6528808010	8DDXFDPVN	£ 21,542.89

**Notes:**