



Preaction Systems
with our DDX Valve

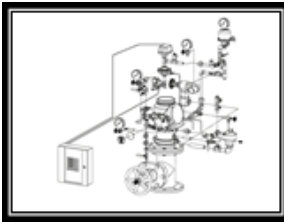
SPECIAL HAZARDS SPECIAL SYSTEMS

- See Bulletins 749, 750 & 751

Description	Part Number	Short Code	List Price
MODEL DDX - DELUGE VALVE FULLY ASSEMBLED - ELECTRIC - SINGLE INTERLOCK			
2" Electric Single Interlock	6522C04110	2DDXFSN	\$ 11,857.63
2" Electric Single Interlock w/Control Valve	6522C08110	2DDXFVSN	\$ 12,919.34
2-1/2" Electric Single Interlock	6521C04110	25DDXFSN	\$ 11,857.63
2-1/2" Electric Single Interlock w/Control Valve	6521C08110	25DDXFVSN	\$ 12,919.34
3" Electric Single Interlock	6523C04110	3DDXFSN	\$ 12,211.54
3" Electric Single Interlock w/Control Valve	6523C08110	3DDXFVSN	\$ 13,273.24
4" Electric Single Interlock	6524C04110	4DDXFSN	\$ 12,389.05
4" Electric Single Interlock w/Control Valve	6524C08110	4DDXFVSN	\$ 13,450.76
6" Electric Single Interlock	6526C04110	6DDXFSN	\$ 14,777.61
6" Electric Single Interlock w/Control Valve	6526C08110	6DDXFVSN	\$ 15,219.15
8" Electric Single Interlock	6528C04110	8DDXFSN	\$ 17,902.06
8" Electric Single Interlock w/Control Valve	6528C08110	8DDXFVSN	\$ 21,148.98
MODEL DDX - DELUGE VALVE FULLY ASSEMBLED - WET PILOT LINE - SINGLE INTERLOCK			
2" Single Interlock - Wet Pilot Line	6522B04010	2DDXFWSN	\$ 10,265.63
2" Single Interlock - Wet Pilot Line w/Control Valve	6522B08010	2DDXFVSN	\$ 12,389.05
2-1/2" Single Interlock - Wet Pilot Line	6521B04010	25DDXFWSN	\$ 10,265.63
2-1/2" Single Interlock - Wet Pilot Line w/Control Valve	6521B08010	25DDXFVSN	\$ 12,389.05
3" Single Interlock - Wet Pilot Line	6523B04010	3DDXFWSN	\$ 10,619.54
3" Single Interlock - Wet Pilot Line w/Control Valve	6523B08010	3DDXFVSN	\$ 12,035.15
4" Single Interlock - Wet Pilot Line	6524B04010	4DDXFWSN	\$ 10,884.68
4" Single Interlock - Wet Pilot Line w/Control Valve	6524B08010	4DDXFVSN	\$ 12,035.15
6" Single Interlock - Wet Pilot Line	6526B04010	6DDXFWSN	\$ 12,211.54
6" Single Interlock - Wet Pilot Line w/Control Valve	6526B08010	6DDXFVSN	\$ 13,892.29
8" Single Interlock - Wet Pilot Line	6528B04010	8DDXFWSN	\$ 17,090.90
8" Single Interlock - Wet Pilot Line w/Control Valve	6528B08010	8DDXFVSN	\$ 20,174.90
MODEL DDX - DELUGE VALVE FULLY ASSEMBLED - DRY PILOT LINE - SINGLE INTERLOCK			
2" Single Interlock - Dry Pilot Line	6522A04010	2DDXFDSN	\$ 12,035.15
2" Single Interlock - Dry Pilot Line w/Control Valve	6522A08010	2DDXFVSN	\$ 13,273.24
2-1/2" Single Interlock - Dry Pilot Line	6521A04010	25DDXFDSN	\$ 12,035.15
2-1/2" Single Interlock - Dry Pilot Line w/Control Valve	6521A08010	25DDXFVSN	\$ 13,273.24
3" Single Interlock - Dry Pilot Line	6523A04010	3DDXFDSN	\$ 12,389.05
3" Single Interlock - Dry Pilot Line w/Control Valve	6523A08010	3DDXFVSN	\$ 13,627.15
4" Single Interlock - Dry Pilot Line	6524A04010	4DDXFDSN	\$ 12,565.44
4" Single Interlock - Dry Pilot Line w/Control Valve	6524A08010	4DDXFVSN	\$ 13,627.15
6" Single Interlock - Dry Pilot Line	6526A04010	6DDXFDSN	\$ 13,892.29
6" Single Interlock - Dry Pilot Line w/Control Valve	6526A08010	6DDXFVSN	\$ 15,661.80
8" Single Interlock - Dry Pilot Line	6528A04010	8DDXFDSN	\$ 18,226.75
8" Single Interlock - Dry Pilot Line w/Control Valve	6528A08010	8DDXFVSN	\$ 21,960.15

Notes:

All DDX fully assembled valves includes Potter Pressure Switch



**Preaction Systems
 with our DDX Valve**

**SPECIAL HAZARDS /
 SPECIAL SYSTEMS**



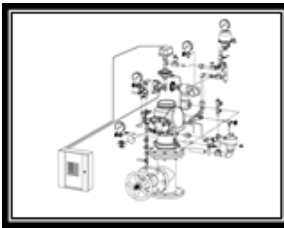
**DDX Double Interlock
 Preaction System -
 Type PL**

- See Bulletin 752

Description	Part Number	Short Code	List Price
MODEL DDX - DELUGE VALVE FULLY ASSEMBLED - DOUBLE INTERLOCK - TYPE D			
2" Double Type D	6522104110	2DDXFDN	\$ 14,865.24
2" Double Type D w/Control Valve	6522108110	2DDXFDVN	\$ 16,104.46
2-1/2" Double Type D	6521104110	25DDXFDN	\$ 14,865.24
2-1/2" Double Type D w/Control Valve	6521108110	25DDXFDVN	\$ 16,104.46
3" Double Type D	6523104110	3DDXFDN	\$ 15,042.76
3" Double Type D w/Control Valve	6523108110	3DDXFDVN	\$ 16,280.85
4" Double Type D	6524104110	4DDXFDN	\$ 15,184.32
4" Double Type D w/Control Valve	6524108110	4DDXFDVN	\$ 16,337.03
6" Double Type D	6526104110	6DDXFDN	\$ 16,652.73
6" Double Type D w/Control Valve	6526108110	6DDXFDVN	\$ 18,375.06
8" Double Type D	6528104110	8DDXFDN	\$ 19,525.52
8" Double Type D w/Control Valve	6528108110	8DDXFDVN	\$ 22,934.22
MODEL DDX - DELUGE VALVE FULLY ASSEMBLED - DOUBLE INTERLOCK - TYPE F			
2" Double Type F	6522304110	2DDXFFN	\$ 15,396.66
2" Double Type F w/Control Valve	6522308110	2DDXFFVN	\$ 16,634.76
2-1/2" Double Type F	6521304110	25DDXFFN	\$ 15,396.66
2-1/2" Double Type F w/Control Valve	6521308110	25DDXFFVN	\$ 16,634.76
3" Double Type F	6523304110	3DDXFFN	\$ 15,396.66
3" Double Type F w/Control Valve	6523308110	3DDXFFVN	\$ 16,634.76
4" Double Type F	6524304110	4DDXFFN	\$ 15,523.61
4" Double Type F w/Control Valve	6524308110	4DDXFFVN	\$ 16,783.06
6" Double Type F	6526304110	6DDXFFN	\$ 17,069.55
6" Double Type F w/Control Valve	6526308110	6DDXFFVN	\$ 18,790.75
8" Double Type F	6528304110	8DDXFFN	\$ 20,824.29
8" Double Type F w/Control Valve	6528308110	8DDXFFVN	\$ 22,934.22
MODEL DDX - DELUGE VALVE FULLY ASSEMBLED - DOUBLE INTERLOCK - TYPE PL			
2" Double Type PL	6522D04010	2DDXFPLN	\$ 17,431.32
2" Double Type PL w/Control Valve	6522D08010	2DDXFPLVN	\$ 18,657.06
2-1/2" Double Type PL	6521D04010	25DDXFPLN	\$ 17,425.70
2-1/2" Double Type PL w/Control Valve	6521D08010	25DDXFPLVN	\$ 18,619.98
3" Double Type PL	6523D04010	3DDXFPLN	\$ 17,449.29
3" Double Type PL w/Control Valve	6523D08010	3DDXFPLVN	\$ 18,595.26
4" Double Type PL	6524D04010	4DDXFPLN	\$ 17,170.66
4" Double Type PL w/Control Valve	6524D08010	4DDXFPLVN	\$ 18,558.19
6" Double Type PL	6526D04010	6DDXFPLN	\$ 18,917.71
6" Double Type PL w/Control Valve	6526D08010	6DDXFPLVN	\$ 20,391.74
8" Double Type PL	6528D04010	8DDXFPLN	\$ 22,769.07
8" Double Type PL w/Control Valve	6528D08010	8DDXFPLVN	\$ 24,713.84

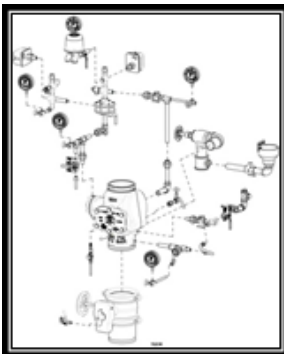
Notes:

All DDX fully assembled valves includes the Potter Pressure Switch



**Praction Systems
 with our DDX Valve**

**SPECIAL HAZARDS
 SPECIAL SYSTEMS**



**DDX Double Interlock
 Praction System -
 Type PL**

- See Bulletin 752

Description	Part Number	Short Code	List Price
PREACTION TRIM — SINGLE INTERLOCK - SEGMENTALLY ASSEMBLED			
Wet Pilot Line 2", 2-1/2" & 3"	6520B02010	25DDXWSPN	\$ 3,845.95
Wet Pilot Line 4", 6" & 8"	6520B03010	4DDXWSPN	\$ 3,845.95
Dry Pilot Line 2", 2-1/2" & 3"	6520A02010	25DDXDSPN	\$ 5,532.94
Dry Pilot Line 4", 6" & 8"	6520A03010	4DDXDSPN	\$ 5,585.13
Electric Release 2", 2-1/2" & 3"	6520C02110	25DDXESPN	\$ 5,243.59
Electric Release 4", 6" & 8"	6520C03110	4DDXESPN	\$ 5,243.59
PREACTION TRIM — SINGLE INTERLOCK - INDIVIDUAL PARTS			
Wet Pilot Line 2", 2-1/2" & 3"	6520B00010	25DDXWSLN	\$ 3,499.92
Wet Pilot Line 4", 6" & 8"	6520B01010	4DDXWSLN	\$ 3,501.04
Dry Pilot Line 2", 2-1/2" & 3"	6520A00010	25DDXDSDLN	\$ 5,255.95
Dry Pilot Line 4", 6" & 8"	6520A01010	4DDXDSDLN	\$ 4,720.95
Electric Release 2", 2-1/2" & 3"	6520C00110	25DDXESLN	\$ 4,890.81
Electric Release 4", 6" & 8"	6520C01110	4DDXESLN	\$ 4,890.81
PREACTION TRIM — DOUBLE INTERLOCK - INDIVIDUAL PARTS			
2", 2-1/2" & 3" Type D	6520100110	25DDXDLDN	\$ 7,973.69
4", 6" & 8" Type D	6520101110	4DDXDLDN	\$ 7,973.69
2", 2-1/2" & 3" Type F	6520300110	25DDXFLN	\$ 8,403.99
4", 6" & 8" Type F	6520301110	4DDXFLN	\$ 8,403.99
PREACTION TRIM — DOUBLE INTERLOCK - SEGMENTALLY ASSEMBLED			
2", 2-1/2" & 3" Type D	6520102110	25DDXDPN	\$ 8,436.58
4", 6" & 8" Type D	6520103110	4DDXDPN	\$ 8,437.70
2", 2-1/2" & 3" Type F	6520302110	25DDXFPN	\$ 8,866.88
4", 6" & 8" Type F	6520303110	4DDXFPN	\$ 8,865.75
PREACTION TRIM — DOUBLE INTERLOCK - TYPE PL - INDIVIDUAL PARTS			
2" - 3" Type PL	6520D00010	25DDXPLLN	\$ 8,437.65
4" - 8" Type PL	6520D01010	4DDXPLLN	\$ 8,487.19
PREACTION TRIM — DOUBLE INTERLOCK - TYPE PL - SEGMENTALLY ASSEMBLED			
2" - 3" Type PL	6520D02010	25DDXPLPN	\$ 10,122.22
4" - 8" Type PL	6520D03010	4DDXPLPN	\$ 10,159.38

Notes:

All DDX fully assembled valves includes the Potter Pressure Switch