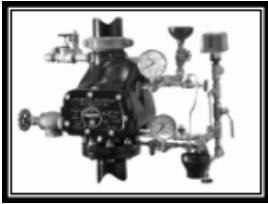


Model A



Model D

DRY PIPE VALVES

- See Bulletins 350, 351, 352, 353

Description	Part Number	Short Code	List Price	
MODEL A THREADED OR GROOVED				
Model A - 2-1/2" — Threaded			S\$	Call
Model A - 2-1/2" — Grooved			S\$	Call
MODEL A METRIC				
Model A - 65mm			S\$	Call
MODEL D FLANGED OR GROOVED				
4" — Flanged			S\$	Call
4" — Grooved			S\$	Call
6" — Flanged			S\$	Call
6" — Grooved			S\$	Call
MODEL D METRIC				
Model D — 100mm			S\$	Call
Model D — 150mm			S\$	Call
TRIM (ONLY) — INDIVIDUAL PARTS				
2-1/2"			S\$	Call
4"			S\$	Call
6"			S\$	Call
TRIM (ONLY) — SEGMENTALLY ASSEMBLED				
2-1/2"			S\$	Call
4"			S\$	Call
6"			S\$	Call
FACTORY TRIMMED VALVES¹				
4" — Flanged			S\$	Call
4" — Grooved			S\$	Call
4" w/ Accelerator — Flanged			S\$	Call
4" w/ Accelerator — Grooved			S\$	Call
6" — Flanged			S\$	Call
6" — Grooved			S\$	Call
6" w/ Accelerator — Flanged	6505060113	6DFTAG	S\$	25,067.86
6" w/ Accelerator — Grooved			S\$	Call

¹ Factory Trimmed Valve Includes Valve and Trim



DELUGE VALVES

- **MODEL DDX DELUGE VALVE**
- Electric, Wet Pilot Line, and Dry Pilot Line Trims
- See Bulletin 519

Description	Part Number	Short Code	List Price
MODEL DDX - DELUGE VALVE ONLY (GROOVED/GROOVED)			
Model DDX - 2"	6103022000	2DDX	\$S\$ 11,188.99
Model DDX - 2-1/2"	6103022500	25DDX	\$S\$ 11,188.99
Model DDX - 2 1/2 (76MM) Red	6103027600	76DDXMM	\$S\$ 11,188.99
Model DDX-3"	6103030000	3DDX	\$S\$ 11,551.20
Model DDX- 4"	6103040026	4DDX	\$S\$ 11,805.68
Model DDX - 6"	6103060024	6DDX	\$S\$ 14,512.92
Model 165MM	6103060028	165DDXMM	\$S\$ 14,512.92
Model DDX - 8"	6103080001	8DDX	\$S\$ 24,108.74
MODEL DDX - DELUGE VALVE ONLY (FLANGE/FLANGE)			
Model DDX- 4"	6103040045	4DDXF	\$S\$ 11,805.68
Model DDX - 6"	6103060046	6DDXF	\$S\$ 14,512.92
Model DDX - 8"	6103080016	8DDXF	\$S\$ 24,108.74
MODEL DDX - DELUGE VALVE ONLY (FLANGE/GROOVED)			
Model DDX- 4"	6103040044	4DDXFG	\$S\$ 11,805.68
Model DDX - 6"	6103060045	6DDXFG	\$S\$ 14,512.92
Model 165MM	6103060052	165DDXFG	\$S\$ 14,512.92
DELUGE TRIM ONLY — SEGMENTALLY ASSEMBLED-WITH PRESSURE SWITCH			
Wet Pilot Line 2", 2-1/2" & 3"	6520702010	25DDXWPN	\$S\$ 7,125.10
Wet Pilot Line 4", 6" & 8"	6520703010	4DDXWPN	\$S\$ 7,125.10
Dry Pilot Line 2", 2-1/2" & 3"	6520802010	25DDXDPPN	\$S\$ 10,673.67
Dry Pilot Line 4", 6" & 8"	6520803010	4DDXDPPN	\$S\$ 10,673.67
Electric Release 2", 2-1/2" & 3"	6520902110	25DDXEPN	\$S\$ 9,974.50
Electric Release 4", 6" & 8"	6520903110	4DDXEPN	\$S\$ 9,974.50
DELUGE TRIM ONLY — INDIVIDUAL PARTS-WITH PRESSURE SWITCH			
Wet Pilot Line 2", 2-1/2" & 3"	6520700010	25DDXWLN	\$S\$ 6,760.61
Wet Pilot Line 4", 6" & 8"	6520701010	4DDXWLN	\$S\$ 6,760.61
Dry Pilot Line 2", 2-1/2" & 3"	6520800010	25DDXDPLN	\$S\$ 9,997.42
Dry Pilot Line 4", 6" & 8"	6520801010	4DDXDPLN	\$S\$ 9,997.42
Electric Release 2", 2-1/2" & 3"	6520900110	25DDXELN	\$S\$ 9,256.99
Electric Release 4", 6" & 8"	6520901110	4DDXELN	\$S\$ 9,256.99
DELUGE TRIM ONLY - SEGMENTALLY ASSEMBLED-WITHOUT PRESSURE SWITCH			
2,2.5&3,DDX,WET PILOT TRIM,SEG W/O PS N	6520702000		\$S\$ 6,095.28
4,6&8,DDX,WET PILOT TRIM,SEG W/O PS N	6520703000		\$S\$ 6,095.28
2,2.5&3,DDX,DRY PILOT TRIM,SEG.W/O PS	6520802000		\$S\$ 8,614.06
4,6&8,DDX,DRY PILOT TRIM,SEG W/O PS	6520803000		\$S\$ 8,614.06
2,2.5&3,DDX,ELECTRIC TRIM,175,SEG W/O PS	6520902100		\$S\$ 8,944.69
4,6&8,DDX,ELECTRIC TRIM,175,SEG W/O PS	6520903100		\$S\$ 8,944.69
DELUGE TRIM ONLY - INDIVIDUAL PARTS-WITHOUT PRESSURE SWITCH			
2,2.5&3,DDX,WET PILOT TRIM,LOOSE W/O PS	6520700000	25DDXWLWOS	\$S\$ 5,730.79
4,6&8,DDX,WET PILOT TRIM,LOOSE W/O PS	6520701000	4DDXWLWOS	\$S\$ 5,730.79
2,2.5&3,DDX,DRY PILOT TRIM,LOOSE W/O PS	6520800000		\$S\$ 7,937.79
4,6&8,DDX,DRY PILOT TRIM,LOOSE W/O PS	6520801000	4DDXDPLWOS	\$S\$ 7,937.79
2,2.5&3,DDX,ELECTRIC TRIM,LOOSE W/O PS	6520900100	25DDXELWOS	\$S\$ 8,227.18
4,6&8,DDX,ELECTRIC TRIM,175,LOOSE W/O PS	6520901100	4DDXELWOS	\$S\$ 8,227.18

Notes:

We have an option to order our trim with or without the Pressure Switches



MODEL FX DRY PIPE VALVE

- Convenient external reset; no priming water required
- See Bulletin 360
- Fully assembled valves include the Potter pressure switches
- Loose and segmented trim do not include the Potter pressure switches

Description	Part Number	Short Code	List Price
MODEL FX DRY PIPE VALVE - GROOVED/GROOVED - VALVE ONLY			
2(50MM),FX DRY VALVE,GE/GE,RED	6101020607	2FX	S\$ 6,734.39
2 1/2(65MM),FX DRY VALVE,GE/GE,RED	6101025607	25FX	S\$ 8,162.91
76MM,FX DRY VALVE,GE/GE,RED	6101076607	76MMFX	S\$ 8,162.91
3(80MM),FX DRY VALVE,GE/GE,RED	6101030607	3FX	S\$ 8,162.91
4(100MM),FX DRY VALVE,GE/GE,RED	6101040607	4FX	S\$ 8,775.12
6(150MM),FX DRY VALVE,GE/GE,RED	6101060607	6FX	S\$12,244.37
165MM,FX DRY VALVE,GE/GE,RED	6101065607	165MMFX	S\$12,244.37
MODEL FX DRY PIPE VALVE - FLANGE/GROOVED - VALVE ONLY			
4(100MM),FX DRY VALVE,FL/GE,RED	6101040608	4FXFG	S\$ 8,775.12
4(100MM),FX DRY VALVE,FL/GE,BS-E,RED	6101040609	4FXFGBS	S\$ 8,775.12
4(100MM),FX DRY VALVE,FL/GE,PN16,RED	610104060A	4FXFGPN16	S\$ 8,775.12
6(150MM),FX DRY VALVE,FL/GE,RED	6101060608	6FXFG	S\$12,244.37
6(150MM),FX DRY VALVE,FL/GE,BS-E,RED	6101060609	6FXFGBS	S\$12,244.37
6(150MM),FX DRY VALVE,FL/GE,PN16,RED	610106060A	6FXFGPN16	S\$12,244.37
MODEL FX DRY PIPE VALVE - FLANGE/FLANGE - VALVE ONLY			
4(100MM),FX DRY VALVE,FL/FL,RED	610104060B	4FXF	S\$ 8,775.12
4(100MM),FX DRY VALVE,FL/FL,BS-E,RED	610104060C	4FXFBS	S\$ 8,775.12
4(100MM),FX DRY VALVE,FL/FL,PN16,RED	610104060E	4FXFPN16	S\$ 8,775.12
6(150MM),FX DRY VALVE,FL/FL,RED	610106060B	6FXF	S\$12,244.37
6(150MM),FX DRY VALVE,FL/FL,BS-E,RED	610106060C	6FXFBS	S\$12,244.37
6(150MM),FX DRY VALVE,FL/FL,PN16,RED	610106060E	6FXFPN16	S\$12,244.37
MODEL FX TRIM ONLY - INDIVIDUAL PARTS (LOOSE)			
2 BASIC DRY TRIM,FX,LOOSE	6508000001	2FXDRYL	S\$ 2,040.72
2 1/2 & 3 BASIC DRY TRIM,FX,LOOSE	6508000002	25FXDRYL	S\$ 2,040.72
4 & 6 BASIC DRY TRIM,FX,LOOSE	6508000003	4FXDRYL	S\$ 2,652.95
MODEL FX TRIM ONLY - SEGMENTALLY ASSEMBLED			
2 BASIC DRY TRIM,FX,SEGMENTED	6508000011	2FXDRYP	S\$ 2,857.03
2 1/2 & 3 BASIC DRY TRIM,FX,SEGMENTED	6508000012	25FXDRYP	S\$ 2,857.03
4 & 6 BASIC DRY TRIM,FX,SEGMENTED	6508000013	4FXDRYP	S\$ 3,061.09
MODEL FX ACCELERATOR AND TRIM			
FX ACCELERATOR AND TRIM KIT LOOSE	650120001A	AEFX	S\$ 4,692.87

Features

- Lightweight ductile iron body with compact trim
- External reset reduces setup and commissioning time
- Does not require priming water
- Available fully assembled, with or without control valve



MODEL FX DRY PIPE VALVE

- Convenient external reset; no priming water required
- See Bulletin 360
- Fully assembled valves include the Potter pressure switches
- Loose and segmented trim do not include the Potter pressure switches

Description	Part Number	Short Code	List Price
MODEL FX FULLY ASSEMBLED VALVE - GROOVED/GROOVED WITH BASIC TRIM			
2(50MM),FX DRY VALVE,GE/GE,RED	6508027000	2FXFB	S\$ 11,632.14
2 1/2(65MM),FX DRY VALVE,GE/GE,RED	6508017000	25FXFB	S\$ 12,652.51
76MM,FX DRY VALVE,GE/GE,RED	6508077000	76MMFXFB	S\$ 12,652.51
3(80MM),FX DRY VALVE,GE/GE,RED	6508037000	3FXFB	S\$ 12,652.51
4(100MM),FX DRY VALVE,GE/GE,RED	6508047000	4FXFB	S\$ 13,264.72
6(150MM),FX DRY VALVE,GE/GE,RED	6508067000	6FXFB	S\$ 14,693.24
165MM,FX DRY VALVE,GE/GE,RED	6508057000	165MMFXFB	S\$ 14,693.24
MODEL FX FULLY ASSEMBLED VALVE - FLANGE/GROOVED WITH BASIC TRIM			
4(100MM),FX DRY VALVE,FL/GE,PN16,RED	650804A000	4FXPN16GFB	S\$ 13,264.72
4(100MM),FX DRY VALVE,FL/GE,RED	6508048000	4FXFGFB	S\$ 13,264.72
6(150MM),FX DRY VALVE,FL/GE,PN16,RED	650806A000	6FXPN16GFB	S\$ 14,693.24
6(150MM),FX DRY VALVE,FL/GE,RED	6508068000	6FXFGFB	S\$ 14,693.24
MODEL FX FULLY ASSEMBLED VALVE - FLANGE/FLANGE WITH BASIC TRIM			
4(100MM),FX DRY VALVE,FL/FL,PN16,RED	650804E000	4FXPN16FFB	S\$ 13,264.72
4(100MM),FX DRY VALVE,FL/FL,RED	650804B000	4FXFFB	S\$ 13,264.72
6(150MM),FX DRY VALVE,FL/FL,PN16,RED	650806E000	6FXPN16FFB	S\$ 14,693.24
6(150MM),FX DRY VALVE,FL/FL,RED	650806B000	6FXFFB	S\$ 14,693.24
MODEL FX FULLY ASSEMBLED VALVE - GROOVED/GROOVED W/CONTROL VALVE			
2(50MM),FX DRY VALVE,GE/GE,RED	6508027100	2FXFBV	S\$ 13,468.79
2 1/2(65MM),FX DRY VALVE,GE/GE,RED	6508017100	25FXFBV	S\$ 13,468.79
76MM,FX DRY VALVE,GE/GE,RED	6508077100	76MMFXFBV	S\$ 13,468.79
3(80MM),FX DRY VALVE,GE/GE,RED	6508037100	3FXFBV	S\$ 13,468.79
4(100MM),FX DRY VALVE,GE/GE,RED	6508047100	4FXFBV	S\$ 14,285.09
6(150MM),FX DRY VALVE,GE/GE,RED	6508067100	6FXFBV	S\$ 16,325.81
165MM,FX DRY VALVE,GE/GE,RED	6508057100	165MMFXFBV	S\$ 16,325.81

Features

- Lightweight ductile iron body with compact trim
- External reset reduces setup and commissioning time
- Does not require priming water
- Available fully assembled, with or without control valve