

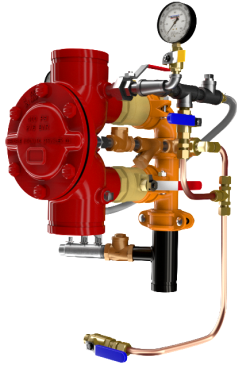
**DDV DIAPHRAGM  
 DELUGE  
 ELECTRIC TRIM**

- See Bulletins 551
- DDV Electric-Uses 175 PSI Solenoid Valve

Description	Part Number	Short Code	List Price
<b>MODEL DDV DELUGE VALVES FULLY ASSEMBLED - ELECTRIC TRIM</b>			
1-1/2" Groove/Groove (ANSI/AWWA C606)	6507002000	.	£ 6,864.26
1-1/2" Flange/Flange Class 150 (ASME B16.5)	6507102000		£ 7,550.68
1-1/2" Flange/Flange Class 300 (ASME B16.5)	6507202000		£ 7,550.68
1-1/2" Flange/Flange PN16 (ISO 7005-2)	6507302000		£ 7,550.68
1-1/2" NPT Thread/Thread (ANSI/ASME B1.20.1)	6507502000		£ 7,550.68
1-1/2" ISO7-1 Thread/Thread	6507602000		£ 7,550.68
2" Groove/Groove (ANSI/AWWA C606)	6507022000		£ 6,864.26
2" Flange/Flange Class 150 (ASME B16.5)	6507122000		£ 7,550.68
2" Flange/Flange Class 300 (ASME B16.5)	6507222000		£ 7,550.68
2" Flange/Flange PN16 (ISO 7005-2)	6507322000		£ 7,550.68
2" NPT Thread/Thread (ANSI/ASME B1.20.1)	6507522000		£ 7,550.68
2" ISO7-1 Thread/Thread	6507622000		£ 7,550.68
2-1/2" Groove/Groove (ANSI/AWWA C606)	6507012000		£ 8,008.30
2-1/2" Flange/Flange Class 150 (ASME B16.5)	6507112000		£ 8,809.13
2-1/2" Flange/Flange Class 300 (ASME B16.5)	6507212000		£ 8,809.13
2-1/2" Flange/Flange PN16 (ISO 7005-2)	6507312000		£ 8,809.13
2-1/2" NPT Thread/Thread (ANSI/ASME B1.20.1)	6507512000		£ 8,809.13
2-1/2" ISO7-1 Thread/Thread	6507612000		£ 8,809.13
76MM Groove/Groove (ANSI/AWWA C606)	6507072000		£ 8,008.30
3" Groove/Groove (ANSI/AWWA C606)	6507032000		£ 8,008.30
3" Flange/Flange Class 150 (ASME B16.5)	6507132000		£ 8,809.13
3" Flange/Flange Class 300 (ASME B16.5)	6507232000		£ 8,809.13
3" Flange/Flange PN16 (ISO 7005-2)	6507332000		£ 8,809.13
3" NPT Thread/Thread (ANSI/ASME B1.20.1)	6507532000		£ 8,809.13
3" ISO7-1 Thread/Thread	6507632000		£ 8,809.13
4" Groove/Groove (ANSI/AWWA C606)	6507042000		£ 9,724.37
4" Flange/Flange Class 150 (ASME B16.5)	6507142000		£ 10,696.80
4" Flange/Flange Class 300 (ASME B16.5)	6507242000		£ 10,696.80
4" Flange/Flange PN16 (ISO 7005-2)	6507342000		£ 10,696.80
6" Groove/Groove (ANSI/AWWA C606)	6507062000		£ 12,584.47
6" Flange/Flange Class 150 (ASME B16.5)	6507162000		£ 13,842.91
6" Flange/Flange Class 300 (ASME B16.5)	6507262000		£ 13,842.91
6" Flange/Flange PN16 (ISO 7005-2)	6507362000		£ 13,842.91
165MM Groove/Groove (ANSI/AWWA C606)	6507052000		£ 12,584.47
8" Groove/Groove (ANSI/AWWA C606)	6507082000		£ 26,482.47
8" Flange/Flange Class 150 (ASME B16.5)	6507182000		£ 29,130.72
8" Flange/Flange/Class 300 (ASME B16.5)	6507282000		£ 29,130.72
8" Flange/Flange PN16 (ISO 7005-2)	6507382000		£ 29,130.72

**Notes:**

Base trim does not include drain trim, alarm test line, or control valve. Please see the last page of the DDV section for optional trim components.



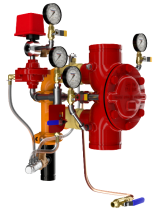
**DDV DIAPHRAGM  
 DELUGE WET  
 PILOT LINE**

- See Bulletin 551

Description	Part Number	Short Code	List Price
<b>MODEL DDV DELUGE VALVES FULLY ASSEMBLED - WET PILOT TRIM</b>			
1-1/2" Groove/Groove (ANSI/AWWA C606)	6507000000		£ 5,720.21
1-1/2" Flange/Flange Class 150 (ASME B16.5)	6507100000		£ 6,292.24
1-1/2" Flange/Flange Class 300 (ASME B16.5)	6507200000		£ 6,292.24
1-1/2" Flange/Flange PN16 (ISO 7005-2)	6507300000		£ 6,292.24
1-1/2" NPT Thread/Thread (ANSI/ASME B1.20.1)	6507500000		£ 6,292.24
1-1/2" ISO7-1 Thread/Thread	6507600000		£ 6,292.24
2" Groove/Groove (ANSI/AWWA C606)	6507020000		£ 5,720.21
2" Flange/Flange Class 150 (ASME B16.5)	6507120000		£ 6,292.24
2" Flange/Flange Class 300 (ASME B16.5)	6507220000		£ 6,292.24
2" Flange/Flange PN16 (ISO 7005-2)	6507320000		£ 6,292.24
2" NPT Thread/Thread (ANSI/ASME B1.20.1)	6507520000		£ 6,292.24
2" ISO7-1 Thread/Thread	6507620000		£ 6,292.24
2-1/2" Groove/Groove (ANSI/AWWA C606)	6507010000		£ 6,292.24
2-1/2" Flange/Flange Class 150 (ASME B16.5)	6507110000		£ 6,921.46
2-1/2" Flange/Flange Class 300 (ASME B16.5)	6507210000		£ 6,921.46
2-1/2" Flange/Flange PN16 (ISO 7005-2)	6507310000		£ 6,921.46
2-1/2" NPT Thread/Thread (ANSI/ASME B1.20.1)	6507510000		£ 6,921.46
2-1/2" ISO7-1 Thread/Thread	6507610000		£ 6,921.46
76MM Groove/Groove (ANSI/AWWA C606)	6507070000		£ 6,292.24
3" Groove/Groove (ANSI/AWWA C606)	6507030000		£ 6,292.24
3" Flange/Flange Class 150 (ASME B16.5)	6507130000		£ 6,921.46
3" Flange/Flange Class 300 (ASME B16.5)	6507230000		£ 6,921.46
3" Flange/Flange PN16 (ISO 7005-2)	6507330000		£ 6,921.46
3" NPT Thread/Thread (ANSI/ASME B1.20.1)	6507530000		£ 6,921.46
3" ISO7-1 Thread/Thread	6507630000		£ 6,921.46
4" Groove/Groove (ANSI/AWWA C606)	6507040000		£ 7,436.28
4" Flange/Flange Class 150 (ASME B16.5)	6507140000		£ 8,179.91
4" Flange/Flange Class 300 (ASME B16.5)	6507240000		£ 8,179.91
4" Flange/Flange PN16 (ISO 7005-2)	6507340000		£ 8,179.91
6" Groove/Groove (ANSI/AWWA C606)	6507060000		£ 9,152.34
6" Flange/Flange Class 150 (ASME B16.5)	6507160000		£ 10,067.57
6" Flange/Flange Class 300 (ASME B16.5)	6507260000		£ 10,067.57
6" Flange/Flange PN16 (ISO 7005-2)	6507360000		£ 10,067.57
165MM Groove/Groove (ANSI/AWWA C606)	6507050000		£ 9,152.34
8" Groove/Groove (ANSI/AWWA C606)	6507080000		£ 20,126.68
8" Flange/Flange Class 150 (ASME B16.5)	6507180000		£ 22,139.34
8" Flange/Flange Class 300 (ASME B16.5)	6507280000		£ 22,139.34
8" Flange/Flange PN16 (ISO 7005-2)	6507380000		£ 22,139.34

**Notes:**

Base trim does not include drain trim, alarm test line, or control valve. Please see the last page of the DDV section for optional trim components.



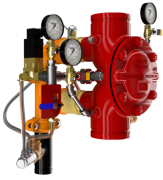
**DDV DIAPHRAGM  
 DELUGE DRY  
 PILOT LINE**

- See Bulletin 551

Description	Part Number	Short Code	List Price
<b>MODEL DDV DELUGE VALVES FULLY ASSEMBLED - DRY PILOT TRIM</b>			
1-1/2" Groove/Groove (ANSI/AWWA C606)	6507001000		£ 9,152.34
1-1/2" Flange/Flange Class 150 (ASME B16.5)	6507101000		£ 10,067.57
1-1/2" Flange/Flange Class 300 (ASME B16.5)	6507201000		£ 10,067.57
1-1/2" Flange/Flange PN16 (ISO 7005-2)	6507301000		£ 10,067.57
1-1/2" NPT Thread/Thread (ANSI/ASME B1.20.1)	6507501000		£ 10,067.57
1-1/2" ISO7-1 Thread/Thread	6507601000		£ 10,067.57
2" Groove/Groove (ANSI/AWWA C606)	6507021000		£ 9,152.34
2" Flange/Flange Class 150 (ASME B16.5)	6507121000		£ 10,067.57
2" Flange/Flange Class 300 (ASME B16.5)	6507221000		£ 10,067.57
2" Flange/Flange PN16 (ISO 7005-2)	6507321000		£ 10,067.57
2" NPT Thread/Thread (ANSI/ASME B1.20.1)	6507521000		£ 10,067.57
2" ISO7-1 Thread/Thread	6507621000		£ 10,067.57
2-1/2" Groove/Groove (ANSI/AWWA C606)	6507011000		£ 10,868.41
2-1/2" Flange/Flange Class 150 (ASME B16.5)	6507111000		£ 11,955.25
2-1/2" Flange/Flange Class 300 (ASME B16.5)	6507211000		£ 11,955.25
2-1/2" Flange/Flange PN16 (ISO 7005-2)	6507311000		£ 11,955.25
2-1/2" NPT Thread/Thread (ANSI/ASME B1.20.1)	6507511000		£ 11,955.25
2-1/2" ISO7-1 Thread/Thread	6507611000		£ 11,955.25
76MM Groove/Groove (ANSI/AWWA C606)	6507071000		£ 10,868.41
3" Groove/Groove (ANSI/AWWA C606)	6507031000		£ 10,868.41
3" Flange/Flange Class 150 (ASME B16.5)	6507131000		£ 11,955.25
3" Flange/Flange Class 300 (ASME B16.5)	6507231000		£ 11,955.25
3" Flange/Flange PN16 (ISO 7005-2)	6507331000		£ 11,955.25
3" NPT Thread/Thread (ANSI/ASME B1.20.1)	6507531000		£ 11,955.25
3" ISO7-1 Thread/Thread	6507631000		£ 11,955.25
4" Groove/Groove (ANSI/AWWA C606)	6507041000		£ 12,584.47
4" Flange/Flange Class 150 (ASME B16.5)	6507141000		£ 13,842.91
4" Flange/Flange Class 300 (ASME B16.5)	6507241000		£ 13,842.91
4" Flange/Flange PN16 (ISO 7005-2)	6507341000		£ 13,842.91
6" Groove/Groove (ANSI/AWWA C606)	6507061000		£ 14,872.56
6" Flange/Flange Class 150 (ASME B16.5)	6507161000		£ 16,359.81
6" Flange/Flange Class 300 (ASME B16.5)	6507261000		£ 16,359.81
6" Flange/Flange PN16 (ISO 7005-2)	6507361000		£ 16,359.81
165MM Groove/Groove (ANSI/AWWA C606)	6507051000		£ 14,872.56
8" Groove/Groove (ANSI/AWWA C606)	6507081000		£ 26,482.47
8" Flange/Flange Class 150 (ASME B16.5)	6507181000		£ 29,130.72
8" Flange/Flange Class 300 (ASME B16.5)	6507281000		£ 29,130.72
8" Flange/Flange PN16 (ISO 7005-2)	6507381000		£ 29,130.72

**Notes:**

Base trim does not include drain trim, alarm test line, or control valve. Please see the last page of the DDV section for optional trim components.



## DDV DIAPHRAGM DELUGE REMOTE RESET

- See Bulletin 550

Description	Part Number	Short Code	List Price
<b>MODEL DDV DELUGE VALVE - REMOTE RESET</b>			
1-1/2" Groove/Groove (ANSI/AWWA C606)	6507003000		£ 9,152.34
1-1/2" Flange/Flange Class 150 (ASME B16.5)	6507103000		£ 10,067.57
1-1/2" Flange/Flange Class 300 (ASME B16.5)	6507203000		£ 10,067.57
1-1/2" Flange/Flange PN16 (ISO 7005-2)	6507303000		£ 10,067.57
1-1/2" NPT Thread/Thread (ANSI/ASME B1.20.1)	6507503000		£ 10,067.57
1-1/2" ISO7-1 Thread/Thread	6507603000		£ 10,067.57
2" Groove/Groove (ANSI/AWWA C606)	6507023000		£ 9,152.34
2" Flange/Flange Class 150 (ASME B16.5)	6507123000		£ 10,067.57
2" Flange/Flange Class 300 (ASME B16.5)	6507223000		£ 10,067.57
2" Flange/Flange PN16 (ISO 7005-2)	6507323000		£ 10,067.57
2" NPT Thread/Thread (ANSI/ASME B1.20.1)	6507523000		£ 10,067.57
2" ISO7-1 Thread/Thread	6507623000		£ 10,067.57
2-1/2" Groove/Groove (ANSI/AWWA C606)	6507013000		£ 11,440.43
2-1/2" Flange/Flange Class 150 (ASME B16.5)	6507113000		£ 12,584.47
2-1/2" Flange/Flange Class 300 (ASME B16.5)	6507213000		£ 12,584.47
2-1/2" Flange/Flange PN16 (ISO 7005-2)	6507313000		£ 12,584.47
2-1/2" NPT Thread/Thread (ANSI/ASME B1.20.1)	6507513000		£ 12,584.47
2-1/2" ISO7-1 Thread/Thread	6507613000		£ 12,584.47
76MM Groove/Groove (ANSI/AWWA C606)	6507073000		£ 11,440.43
3" Groove/Groove (ANSI/AWWA C606)	6507033000		£ 11,440.43
3" Flange/Flange Class 150 (ASME B16.5)	6507133000		£ 12,584.47
3" Flange/Flange Class 300 (ASME B16.5)	6507233000		£ 12,584.47
3" Flange/Flange PN16 (ISO 7005-2)	6507333000		£ 12,584.47
3" NPT Thread/Thread (ANSI/ASME B1.20.1)	6507533000		£ 12,584.47
3" ISO7-1 Thread/Thread	6507633000		£ 12,584.47
4" Groove/Groove (ANSI/AWWA C606)	6507043000		£ 12,584.47
4" Flange/Flange Class 150 (ASME B16.5)	6507143000		£ 13,842.91
4" Flange/Flange Class 300 (ASME B16.5)	6507243000		£ 13,842.91
4" Flange/Flange PN16 (ISO 7005-2)	6507343000		£ 13,842.91
6" Groove/Groove (ANSI/AWWA C606)	6507063000		£ 14,872.56
6" Flange/Flange Class 150 (ASME B16.5)	6507163000		£ 16,359.81
6" Flange/Flange Class 300 (ASME B16.5)	6507263000		£ 16,359.81
6" Flange/Flange PN16 (ISO 7005-2)	6507363000		£ 16,359.81
165MM Groove/Groove (ANSI/AWWA C606)	6507053000		£ 14,872.56
8" Groove/Groove (ANSI/AWWA C606)	6507083000		£ 31,778.97
8" Flange/Flange Class 150 (ASME B16.5)	6507183000		£ 34,956.87
8" Flange/Flange Class 300 (ASME B16.5)	6507283000		£ 34,956.87
8" Flange/Flange PN16 (ISO 7005-2)	6507383000		£ 34,956.87

**Notes:**

Base trim does not include drain trim, alarm test line, or control valve. Please see the last page of the DDV section for optional trim components.



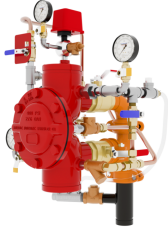
**DDV DIAPHRAGM  
 DELUGE REMOTE  
 RESET PRESSURE  
 REGULATING**

- See Bulletin 550

Description	Part Number	Short Code	List Price
<b>MODEL DDV DELUGE VALVE - REMOTE RESET PRESSURE REGULATING</b>			
1-1/2" Groove/Groove (ANSI/AWWA C606)	6507007000		£ 12,584.47
1-1/2" Flange/Flange Class 150 (ASME B16.5)	6507107000		£ 13,842.91
1-1/2" Flange/Flange Class 300 (ASME B16.5)	6507207000		£ 13,842.91
1-1/2" Flange/Flange PN16 (ISO 7005-2)	6507307000		£ 13,842.91
1-1/2" NPT Thread/Thread (ANSI/ASME B1.20.1)	6507507000		£ 13,842.91
1-1/2" ISO7-1 Thread/Thread	6507607000		£ 13,842.91
2" Groove/Groove (ANSI/AWWA C606)	6507027000		£ 12,584.47
2" Flange/Flange Class 150 (ASME B16.5)	6507127000		£ 13,842.91
2" Flange/Flange Class 300 (ASME B16.5)	6507227000		£ 13,842.91
2" Flange/Flange PN16 (ISO 7005-2)	6507327000		£ 13,842.91
2" NPT Thread/Thread (ANSI/ASME B1.20.1)	6507527000		£ 13,842.91
2" ISO7-1 Thread/Thread	6507627000		£ 13,842.91
2-1/2" Groove/Groove (ANSI/AWWA C606)	6507017000		£ 13,728.51
2-1/2" Flange/Flange Class 150 (ASME B16.5)	6507117000		£ 15,101.37
2-1/2" Flange/Flange Class 300 (ASME B16.5)	6507217000		£ 15,101.37
2-1/2" Flange/Flange PN16 (ISO 7005-2)	6507317000		£ 15,101.37
2-1/2" NPT Thread/Thread (ANSI/ASME B1.20.1)	6507517000		£ 15,101.37
2-1/2" ISO7-1 Thread/Thread	6507617000		£ 15,101.37
76MM Groove/Groove (ANSI/AWWA C606)	6507077000		£ 13,728.51
3" Groove/Groove (ANSI/AWWA C606)	6507037000		£ 13,728.51
3" Flange/Flange Class 150 (ASME B16.5)	6507137000		£ 15,101.37
3" Flange/Flange Class 300 (ASME B16.5)	6507237000		£ 15,101.37
3" Flange/Flange PN16 (ISO 7005-2)	6507337000		£ 15,101.37
3" NPT Thread/Thread (ANSI/ASME B1.20.1)	6507537000		£ 15,101.37
3" ISO7-1 Thread/Thread	6507637000		£ 15,101.37
4" Groove/Groove (ANSI/AWWA C606)	6507047000		£ 14,872.56
4" Flange/Flange Class 150 (ASME B16.5)	6507147000		£ 16,359.81
4" Flange/Flange Class 300 (ASME B16.5)	6507247000		£ 16,359.81
4" Flange/Flange PN16 (ISO 7005-2)	6507347000		£ 16,359.81
6" Groove/Groove (ANSI/AWWA C606)	6507067000		£ 17,160.64
6" Flange/Flange Class 150 (ASME B16.5)	6507167000		£ 18,876.71
6" Flange/Flange Class 300 (ASME B16.5)	6507267000		£ 18,876.71
6" Flange/Flange PN16 (ISO 7005-2)	6507367000		£ 18,876.71
165MM Groove/Groove (ANSI/AWWA C606)	6507057000		£ 17,160.64

**Notes:**

Base trim does not include drain trim, alarm test line, or control valve. Please see the last page of the DDV section for optional trim components.



**DDV DIAPHRAGM  
 DELUGE DRY  
 PILOT PRESSURE  
 REGULATING**

- See Bulletin 550
- Dry Pilot Pressure Regulating

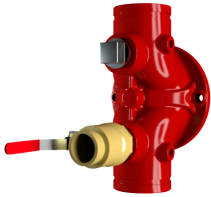
Description	Part Number	Short Code	List Price
<b>MODEL DDV DELUGE VALVE - DRY PILOT PRESSURE REGULATING</b>			
1-1/2" Groove/Groove (ANSI/AWWA C606)	6507005000		£ 11,440.43
1-1/2" Flange/Flange Class 150 (ASME B16.5)	6507105000		£ 12,584.47
1-1/2" Flange/Flange Class 300 (ASME B16.5)	6507205000		£ 12,584.47
1-1/2" Flange/Flange PN16 (ISO 7005-2)	6507305000		£ 12,584.47
1-1/2" NPT Thread/Thread (ANSI/ASME B1.20.1)	6507505000		£ 12,584.47
1-1/2" ISO7-1 Thread/Thread	6507605000		£ 12,584.47
2" Groove/Groove (ANSI/AWWA C606)	6507025000		£ 11,440.43
2" Flange/Flange Class 150 (ASME B16.5)	6507125000		£ 12,584.47
2" Flange/Flange Class 300 (ASME B16.5)	6507225000		£ 12,584.47
2" Flange/Flange PN16 (ISO 7005-2)	6507325000		£ 12,584.47
2" NPT Thread/Thread (ANSI/ASME B1.20.1)	6507525000		£ 12,584.47
2" ISO7-1 Thread/Thread	6507625000		£ 12,584.47
2-1/2" Groove/Groove (ANSI/AWWA C606)	6507015000		£ 13,156.50
2-1/2" Flange/Flange Class 150 (ASME B16.5)	6507115000		£ 14,472.14
2-1/2" Flange/Flange Class 300 (ASME B16.5)	6507215000		£ 14,472.14
2-1/2" Flange/Flange PN16 (ISO 7005-2)	6507315000		£ 14,472.14
2-1/2" NPT Thread/Thread (ANSI/ASME B1.20.1)	6507515000		£ 14,472.14
2-1/2" ISO7-1 Thread/Thread	6507615000		£ 14,472.14
76MM Groove/Groove (ANSI/AWWA C606)	6507075000		£ 13,156.50
3" Groove/Groove (ANSI/AWWA C606)	6507035000		£ 13,156.50
3" Flange/Flange Class 150 (ASME B16.5)	6507135000		£ 14,472.14
3" Flange/Flange Class 300 (ASME B16.5)	6507235000		£ 14,472.14
3" Flange/Flange PN16 (ISO 7005-2)	6507335000		£ 14,472.14
3" NPT Thread/Thread (ANSI/ASME B1.20.1)	6507535000		£ 14,472.14
3" ISO7-1 Thread/Thread	6507635000		£ 14,472.14
4" Groove/Groove (ANSI/AWWA C606)	6507045000		£ 14,872.56
4" Flange/Flange Class 150 (ASME B16.5)	6507145000		£ 16,359.81
4" Flange/Flange Class 300 (ASME B16.5)	6507245000		£ 16,359.81
4" Flange/Flange PN16 (ISO 7005-2)	6507345000		£ 16,359.81
6" Groove/Groove (ANSI/AWWA C606)	6507065000		£ 17,160.64
6" Flange/Flange Class 150 (ASME B16.5)	6507165000		£ 18,876.71
6" Flange/Flange Class 300 (ASME B16.5)	6507265000		£ 18,876.71
6" Flange/Flange PN16 (ISO 7005-2)	6507365000		£ 18,876.71
165MM Groove/Groove (ANSI/AWWA C606)	6507055000		£ 17,160.64

**Notes:**

Base trim does not include drain trim, alarm test line, or control valve. Please see the last page of the DDV section for optional trim components.

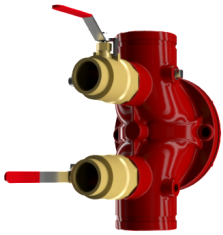
## DDV DIAPHRAGM DELUGE VALVE

- Bulletin 550

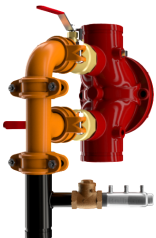


## LOWER BALL VALVE

- Lower & Upper Ball Valve Option X 2



## DUAL BALL VALVE



## FULL DRAIN VALVE

Description	Part Number	Short Code	List Price
<b>DRAIN TRIM OPTIONS- SELECT ONE</b>			
Lower Ball Valve - 1-1/2" & 2"	77000300		£ 171.61
Lower Ball Valve - 2-1/2", 3"	77000299		£ 400.41
Lower Ball Valve - 4", 6", 8"	9884011D		£ 686.42
Lower & Upper Ball Valve -1 -1/2" & 2"	77000300		£ 171.61
Lower & Upper Ball Valve - 2-1/2", 3"	77000299		£ 400.41
Lower & Upper Ball Valve - 4", 6", 8"	9884011D		£ 686.42
Full Drain Trim - 1-1/2" & 2"	77037003		£ 743.63
Full Drain Trim - 2-1/2", 3"	77037004		£ 1,258.44
Full Drain Trim - 4", 6", 8"	77037002		£ 2,631.30
<b>OPTIONAL TRIM</b>			
DDV Alarm Test Kit MTO	6501040001		£ 457.62
600 psi Gauge	98248005		£ 114.38
<b>CONTROL VALVES (UPPER &amp; LOWER)</b>			
Control Valve - 2-1/2"	77000302		£ 1,029.64
Control Valve - 3"	77000303		£ 1,029.64
Control Valve - 4"	77000304		£ 1,144.04
Control Valve - 6"	77000306		£ 1,487.26
S/A Control Valve 8"	77000308		£ 2,086.82
Control Valve w/Inlet Spool - 2-1/2"	77000271		£ 1,372.86
Control Valve w/Inlet Spool - 3"	77000273		£ 1,372.86
Control Valve w/Inlet Spool - 4"	77000274		£ 1,487.26
Control Valve w/Inlet Spool - 6"	77000276		£ 2,059.27
DDV S/A Control Valve 8" Winlet Spool	77000278		£ 2,882.36

## DELUGE VALVES

- **MODEL DDX DELUGE VALVE**
- Electric, Wet Pilot Line, and Dry Pilot Line Trims
- See Bulletin 519

Description	Part Number	Short Code	List Price
<b>MODEL DDX - DELUGE VALVE ONLY (GROOVED/GROOVED)</b>			
2,DELUGE-DRY,DDX,GXG RED	6103022001	2DDXR	£ 6,272.61
2,1/2,DELUGE-DRY,DDX,GXG RED	6103022501	25DDXR	£ 6,272.61
3,DELUGE-DRY,DDX,(80MM),GXG RED	6103030001	3DDXR	£ 6,475.67
Model DDX 76MM	6103027600	76DDXMM	£ 6,272.61
4,DELUGE-DRY,DDX,(100MM),GXG RED	6103040030	4DDXR	£ 6,618.33
6,DELUGE-DRY,DDX,(150MM),GXG RED	6103060030	6DDXR	£ 8,136.03
Model DDX 165MM	6103060028	165DDXMM	£ 8,136.03
8,DELUGE-DRY,DDX,(200MM),GXG RED	6103080003	8DDXR	£ 13,515.49
<b>MODEL DDX - DELUGE VALVE ONLY (FLANGE/FLANGE)</b>			
4,DELUGE-DRY,DDX,FL/FL 150 RED	6103040047	4DDXFR	£ 6,618.33
6,DELUGE-DRY,DDX,FL/FL,150 RED	6103060047	6DDXFR	£ 8,136.03
8,DELUGE-DRY,DDX,FL/FL,150 RED	6103080018	8DDXFR	£ 13,515.49
<b>MODEL DDX - DELUGE VALVE ONLY (FLANGE/GROOVED)</b>			
4,DELUGE-DRY,DDX,FL/GE,150 RED	6103040046	4DDXFG	£ 6,618.33
6,DELUGE-DRY,DDX FL/GE,150 RED	6103060048	6DDXFG	£ 8,136.03
165MM / PN16	6103060052	165DDXFG	£ 8,136.03
<b>DELUGE TRIM ONLY — SEGMENTALLY ASSEMBLED</b>			
Wet Pilot Line 2", 2-1/2" & 3"	6520702010	25DDXWPN	£ 3,994.37
Wet Pilot Line 4", 6" & 8"	6520703010	4DDXWPN	£ 3,994.37
Dry Pilot Line 2", 2-1/2" & 3"	6520802010	25DDXDPPN	£ 5,983.72
Dry Pilot Line 4", 6" & 8"	6520803010	4DDXDPPN	£ 5,983.72
Electric Release 2", 2-1/2" & 3"	6520902110	25DDXEPN	£ 5,591.76
Electric Release 4", 6" & 8"	6520903110	4DDXEPN	£ 5,591.76
<b>DELUGE TRIM ONLY — INDIVIDUAL PARTS</b>			
Wet Pilot Line 2", 2-1/2" & 3"	6520700010	25DDXWLN	£ 3,790.04
Wet Pilot Line 4", 6" & 8"	6520701010	4DDXWLN	£ 3,790.04
Dry Pilot Line 2", 2-1/2" & 3"	6520800010	25DDXDPLN	£ 5,604.61
Dry Pilot Line 4", 6" & 8"	6520801010	4DDXDPLN	£ 5,604.61
Electric Release 2", 2-1/2" & 3"	6520900110	25DDXELN	£ 5,189.52
Electric Release 4", 6" & 8"	6520901110	4DDXELN	£ 5,189.52

**Notes:**

All DDX trim includes Potter Pressure Switch





## DELUGE VALVES

- **MODEL DDX DELUGE VALVE**
- Electric, Wet Pilot Line, and Dry Pilot Line Trims
- See Bulletin 519

Description	Part Number	Short Code	List Price
<b>MODEL DDX - DELUGE VALVES FULLY ASSEMBLED - ELECTRIC TRIM</b>			
2" Electric Release	6522904110	2DDXFEN	£ 13,282.62
2" Electric Release w/Control Valve	6522908110	2DDXFEVN	£ 14,713.48
2-1/2" Electric Release	6521904110	25DDXFEN	£ 13,282.62
2-1/2" Electric Release w/Control Valve	6521908110	25DDXFEVN	£ 14,713.48
3" Electric Release	6523904110	3DDXFEN	£ 13,691.24
3" Electric Release w/Control Valve	6523908110	3DDXFEVN	£ 14,917.14
76MM Electric Release	6525905110	76DDXFEN	£ 13,282.62
4" Electric Release	6524904110	4DDXFEN	£ 13,706.82
4" Electric Release w/Control Valve	6524908110	4DDXFEVN	£ 15,125.98
6" Electric Release	6526904110	6DDXFEN	£ 15,237.55
6" Electric Release w/Control Valve	6526908110	6DDXFEVN	£ 16,605.88
165MM, DDX, Valve, w/Electric	6527905110	165DDXFVN	£ 15,237.55
8" Electric Release	6528904110	8DDXFEN	£ 20,483.57
8" Electric Release w/Control Valve	6528908110	8DDXFEVN	£ 23,238.64
<b>MODEL DDX - DELUGE VALVES FULLY ASSEMBLED - WET PILOT LINE TRIM</b>			
2" Wet Pilot Line	6522704010	2DDXFVN	£ 11,444.44
2" Wet Pilot Line w/Control Valve	6522708010	2DDXFVNV	£ 12,874.00
2-1/2" Wet Pilot Line	6521704010	25DDXFVN	£ 11,444.44
2-1/2" Wet Pilot Line w/Control Valve	6521708010	25DDXFVNV	£ 12,874.00
3" Wet Pilot Line	6523704010	3DDXFVN	£ 11,853.06
3" Wet Pilot Line w/Control Valve	6523708010	3DDXFVNV	£ 13,282.62
76MM Wet Pilot Line	6525705010	76DDXFVN	£ 11,444.44
4" Wet Pilot Line	6524704010	4DDXFVN	£ 12,137.15
4" Wet Pilot Line w/Control Valve	6524708010	4DDXFVNV	£ 13,557.63
6" Wet Pilot Line	6526704010	6DDXFVN	£ 13,667.90
6" Wet Pilot Line w/Control Valve	6526708010	6DDXFVNV	£ 15,659.15
165MM, DDX, Valve, w/Wet Pilot	6527705010	165DDXFVN	£ 13,667.73
8" Wet Pilot Line	6528704010	8DDXFVN	£ 19,920.56
8" Wet Pilot Line w/Control Valve	6528708010	8DDXFVNV	£ 24,044.48
<b>MODEL DDX - DELUGE VALVES FULLY ASSEMBLED - DRY PILOT LINE TRIM</b>			
2" Dry Pilot Line	6522804010	2DDXFDPN	£ 13,487.59
2" Dry Pilot Line w/Control Valve	6522808010	2DDXFDPVN	£ 14,917.14
2-1/2" Dry Pilot Line	6521804010	25DDXFDPN	£ 13,487.59
2-1/2" Dry Pilot Line w/Control Valve	6521808010	25DDXFDPVN	£ 14,917.14
3" Dry Pilot Line	6523804010	3DDXFDPN	£ 13,896.22
3" Dry Pilot Line w/Control Valve	6523808010	3DDXFDPVN	£ 15,325.77
76MM Dry Pilot Line	6525805010	76DDXFDPN	£ 13,487.59
4" Dry Pilot Line	6524804010	4DDXFDPN	£ 14,089.49
4" Dry Pilot Line w/Control Valve	6524808010	4DDXFDPVN	£ 15,511.26
6" Dry Pilot Line	6526804010	6DDXFDPN	£ 15,621.53
6" Dry Pilot Line w/Control Valve	6526808010	6DDXFDPVN	£ 17,611.50
165MM, DDX, Valve, w/ Dry Pilot line	6527805010	165DDXFDPN	£ 15,621.53
8" Dry Pilot Line	6528804010	8DDXFDPN	£ 20,858.47
8" Dry Pilot Line w/Control Valve	6528808010	8DDXFDPVN	£ 25,355.97

### Notes: