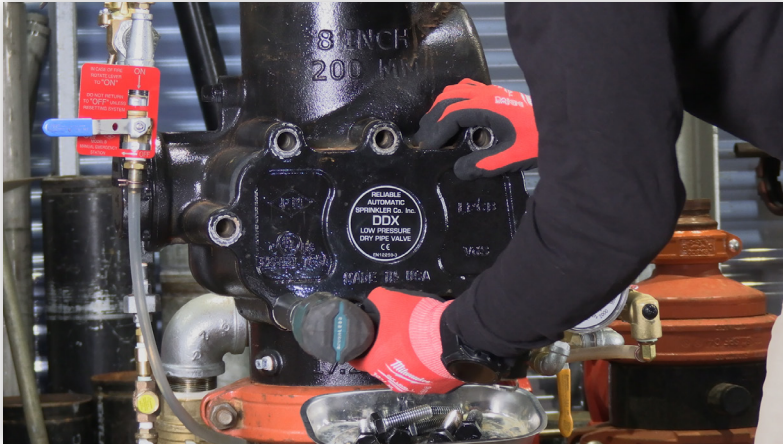


Replacing the Striker Plate Assembly on an 8" DDX or EX Valve

1. Ensure the system has been shut down, isolated, and drained.
2. Remove the bolts from the cover plate.



3. Remove the bolts from the striker plate assembly using the provided Allen wrench.



Note: It is not necessary to remove the clapper assembly from the valve. The assembly is shown outside of the valve for illustration purposes.

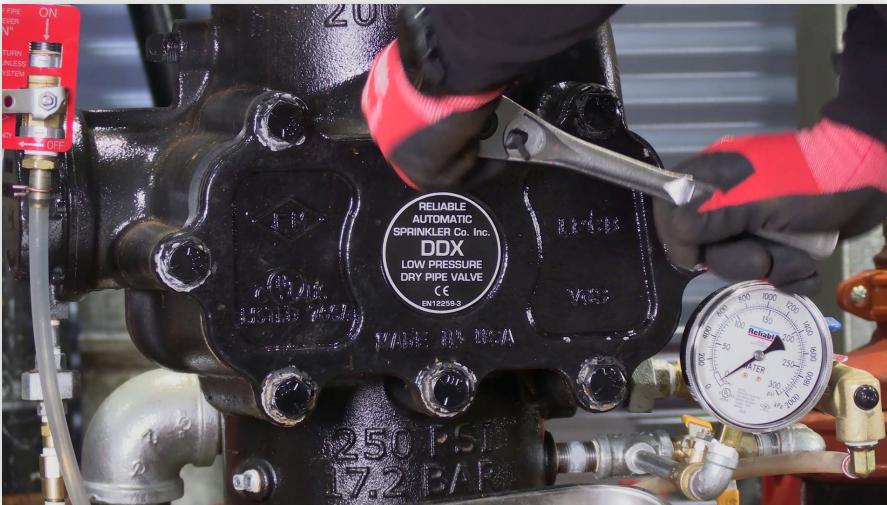
4. Replace the existing striker plate with the provided replacement.



5. Screw in the replacement striker plate assembly.



6. Replace the cover plate on the valve.



7. Return the system to service.

Watch a video
demonstration here:



For questions or concerns,
contact product technology
at tech@reliablesprinkler.com
or call us at 1-800-557-2726.