

RESIDENTIAL SPRINKLERS

For NFPA 13D, 13R, and 13 Occupancies 

Designed for life safety, residential sprinkler systems provide time to exit in case of a fire

Reliable® offers a wide range of residential sprinklers to suit any decor, budget, and water supply.

Advantages of the Reliable® residential line

- » Optimized for projects where the domestic water meter limits flow through the meter to 25 GPM
- » Choose from 3mm glass bulb or sturdy fusible link operating elements
- » Low lead options available, see Bulletin 033 & 188
- » Horizontal sidewall coverage sprinklers available with coverage areas up to 16' x 20' (4.9m x 6.1m) or 14' x 26' (4.3m x 7.9m)
- » Reliable's flat plate residential pendent sprinklers have the broadest selection of K-Factors in the industry: 3.0 (43), 4.3 (62), 4.9 (71), w5.8 (84), 7.6 (109)

We also offer a complete line of system components and accessories

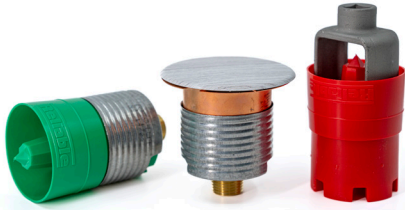
- » CPVC pipe & fittings
- » Waterflow detectors
- » Electric bells
- » Hangers
- » Riser assemblies
- » Tank and pump systems
- » Teflon tape and sealant
- » Globe, ball, check, & backflow prevention valves
- » Fire department connections



Reliable®

reliablesprinkler.com

RFC49plus Residential Flat Concealed Pendant



Bulletin 188

Style Flat Cover Plate
Concealed Pendant

K-factor 4.9 (71)

Sprinkler Temp. 165°F (74°C),
212°F (100°C)

Thermal Element Link

RFC Residential Flat Concealed Pendant



Bulletin 006

Style Flat Concealed Pendant

K-factor 3.0 (43), 4.3 (62) 4.9 (71), 5.8 (84), 7.6 (109)

Sprinkler Temp. 165°F (74°C),
212°F (100°C)

Thermal Element Link

RFS Residential Flat Concealed Horizontal Sidewall



Bulletin 048

Style Flat Cover Plate
Concealed Sidewall

K-factor 4.2 (60)

Sprinkler Temp. 165°F (74°C)

Thermal Element Link

F1Res Series Pendant



Bulletin 135

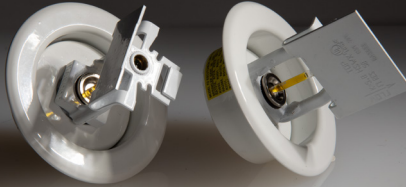
Style Pendant or Recessed Pendant,
Conical Concealed Pendant

K-factor 3.0 (43), 4.9 (71),
5.8 (84), 7.6 (109)

Sprinkler Temp. 155°F (68°C),
175°F (79°C)

Thermal Element Bulb

F1Res Series Horizontal Sidewall



Bulletin 135

Style Sidewall or
Recessed Sidewall,
Conical Concealed Sidewall

K-factor 4.4 (63), 5.8 (84)

Sprinkler Temp. 155°F (68°C),
175°F (79°C)

Thermal Element Bulb

Residential Dry Sidewall



Bulletin 052

Style Horizontal Sidewall

K-factor 4.4 (63)

Sprinkler Temp. 155°F (68°C),
175°F (79°C)

Thermal Element Bulb

Inlet Size 1" NPT standard
and 3/4" NPT optional

KRes Residential Pendant



Bulletin 935

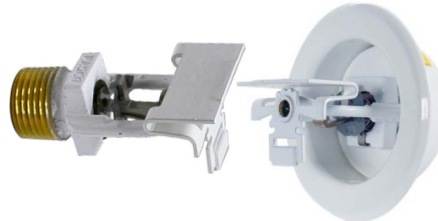
Style Pendant or Recessed Pend.

K-factor 3.0 (43), 4.9 (71),
5.8 (84), 7.6 (109)

Sprinkler Temp. 165°F (74°C),
212°F (100°C)

Thermal Element Link

KRes Series Horizontal Sidewall



Bulletin 935

Style Sidewall or
Recessed Sidewall,

K-factor 4.4 (63), 5.8(84)

Sprinkler Temp. 165°F (74°C)

Thermal Element Link

*Standard & Special Application
Cover Plate Finishes*



12 Standard Woodgrain Finishes



*Custom Painted & Custom Printed
Finishes*

