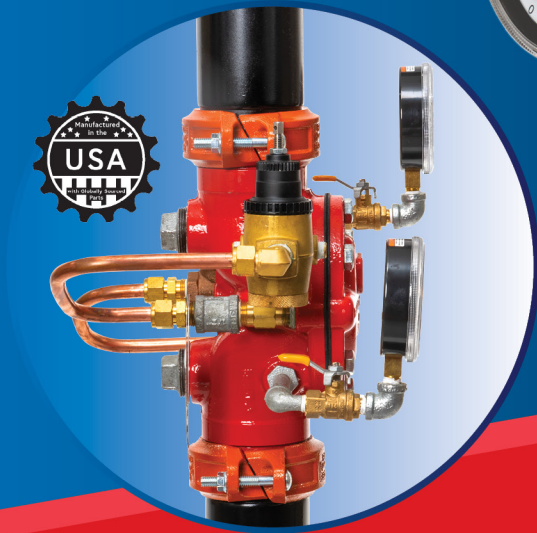
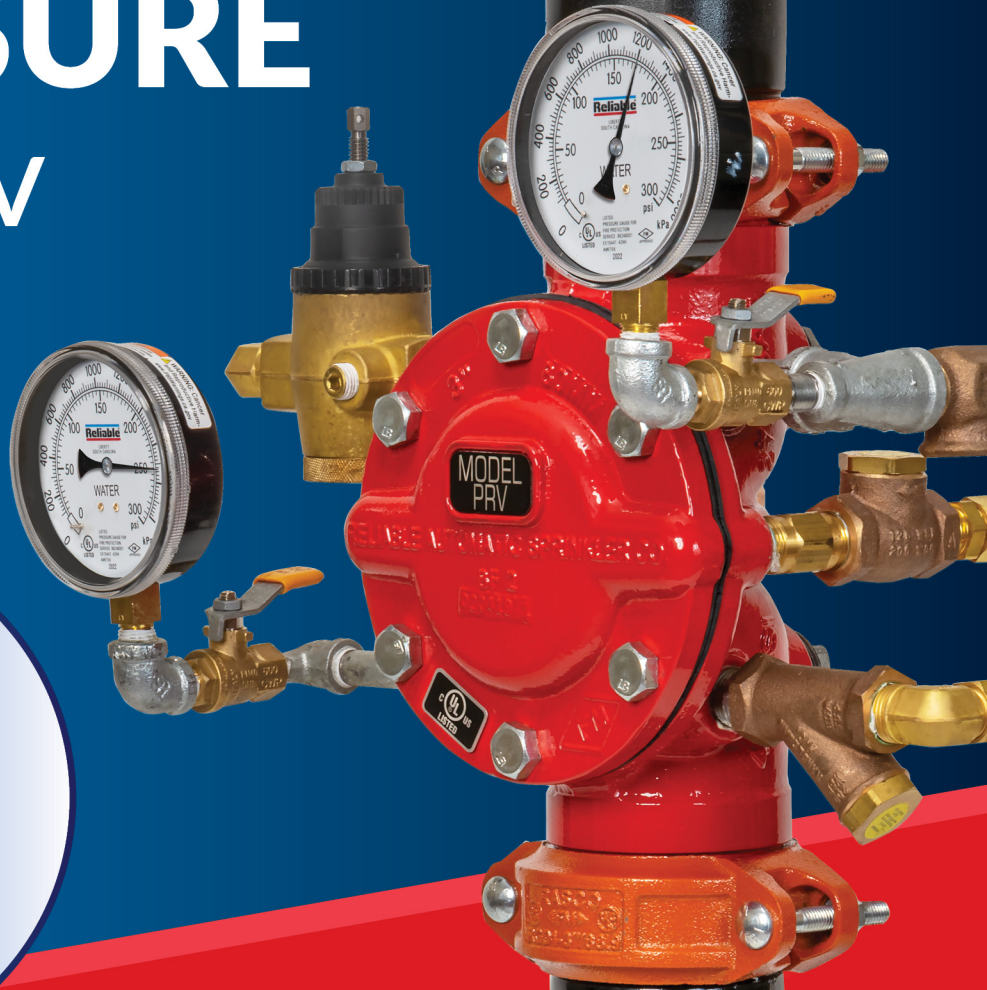


PERFORMANCE UNDER PRESSURE

Model PRV

Pressure
Regulating
Valve



The Model PRV is a compact, diaphragm-type valve that reduces and regulates pressure in both flowing and non-flowing conditions. With no trim connections to the face of the valve, the PRV is simple to install, maintain, and service.

Reliable®

reliablesprinkler.com/prv



Approved up
to 400 psi