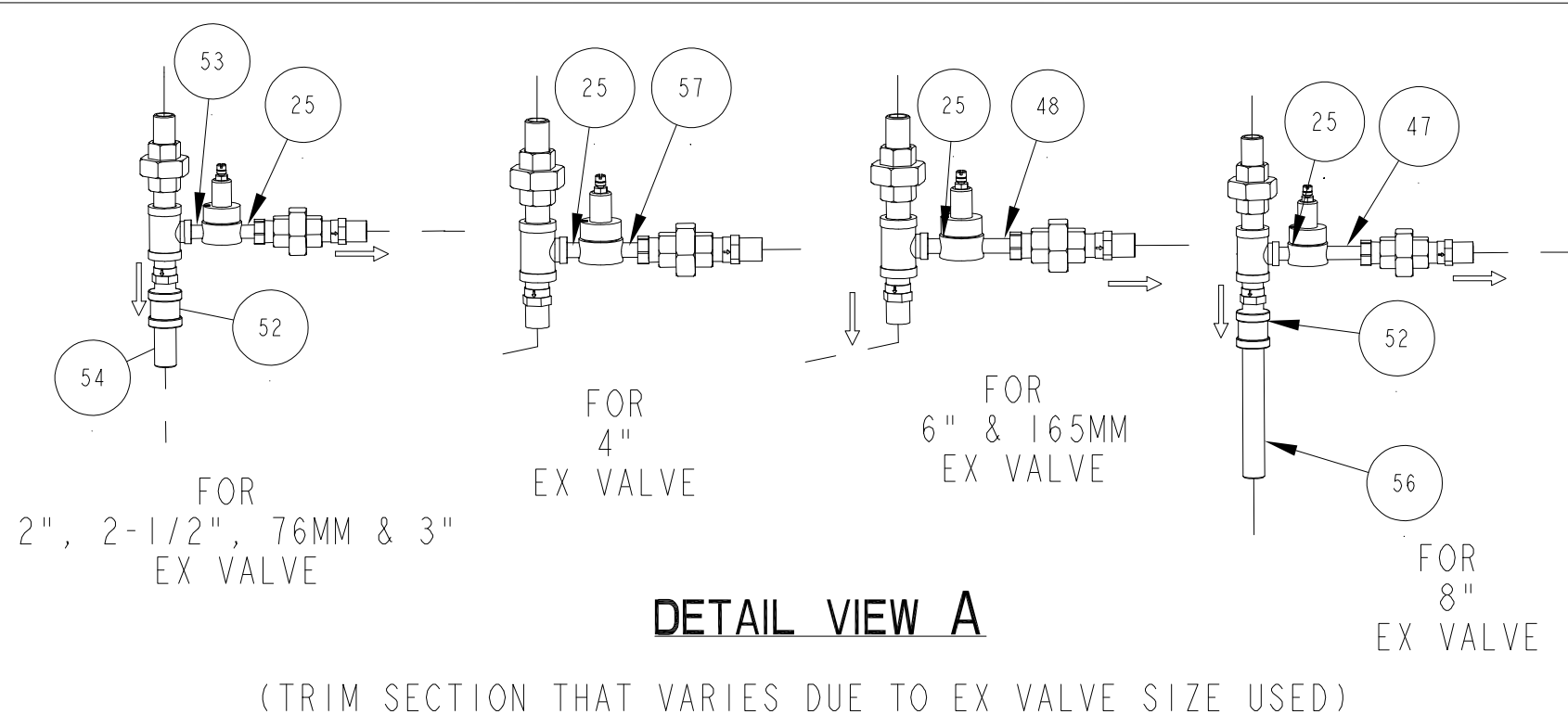
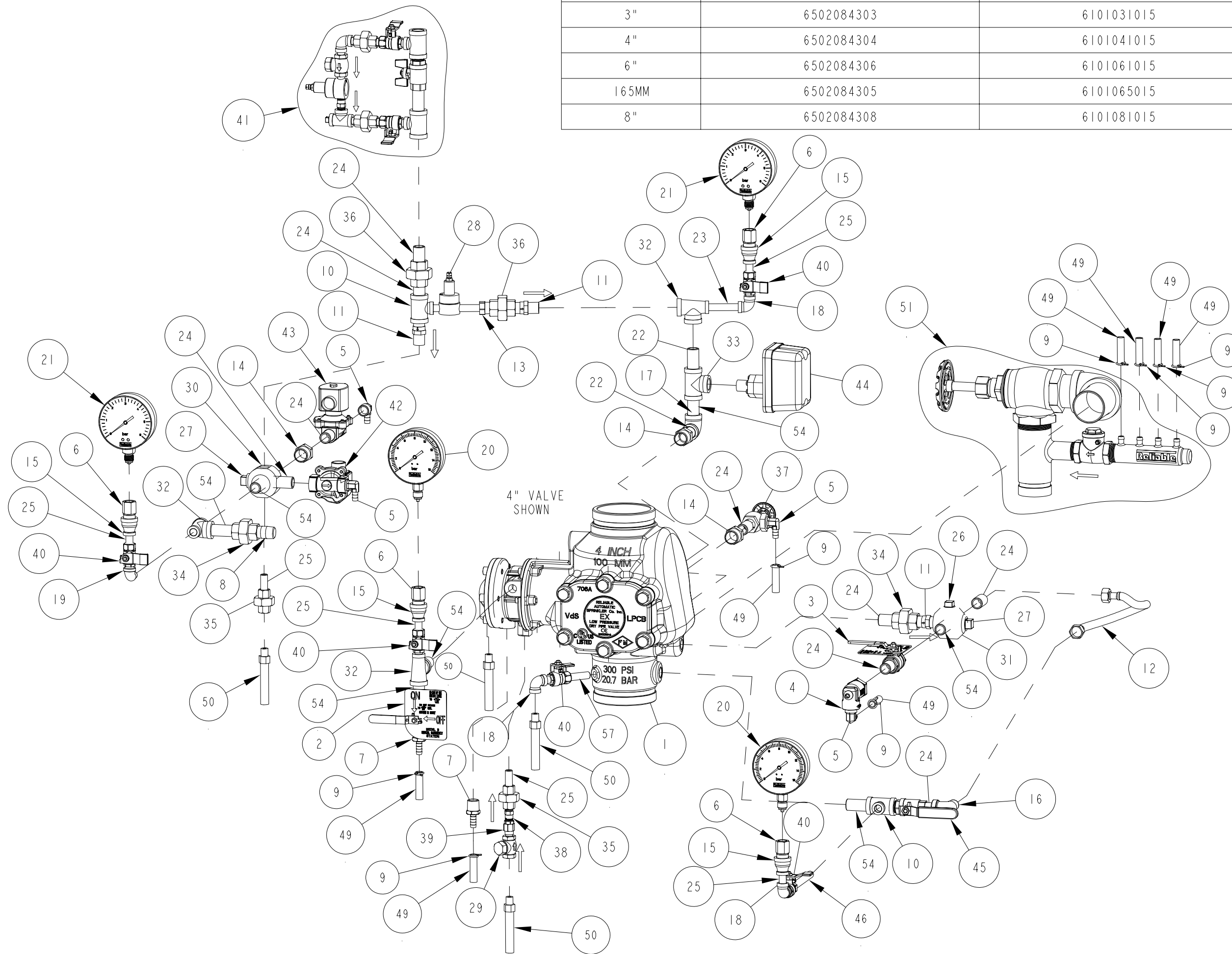


# Reliable

## TRIM PART NUMBER TABLE

SYSTEM SIZE	PART NUMBER (FULLY-ASSEMBLED TO MODEL EX VALVE ONLY)	MODEL EX VALVE P/N
2"	6502084302	6101021015
2-1/2"	6502084301	6101025015
76MM	6502084307	6101051015
3"	6502084303	6101031015
4"	6502084304	6101041015
6"	6502084306	6101061015
165MM	6502084305	6101065015
8"	6502084308	6101081015



**NOTES:**  
 ▲ P/N 98543209 FOR 2"-3" TRIMS QTY 8.  
 FOR ALL OTHER TRIM SIZES QTY 7.

**MODEL EX DRY PIPE VALVE  
 LPCB SINGLE INTERLOCK PRE-ACTION TRIM**  
 CA-324 P/N 89241294 REV. B

57	98543244	NIPPLE, STEEL, GALV., 1/4" X 2"	FOR ALL OTHERS	1
			FOR 4" TRIMS	2
56	98543202	NIPPLE, STEEL, GALV., 1/2" X 5-1/2"	SEE DETAIL VIEW A	1
55	95516915	PERMA-LOK		A/R
54	98543209	NIPPLE, STEEL, GALV., 1/2" X 2"		▲
53	98543227	NIPPLE, STEEL, GALV., 1/4" X CLOSE	SEE DETAIL VIEW A	2
52	98085655	COUPLING, 1/2", GALV.		1
51	77031006	ASSEMBLY, TRIM, DRAIN	FOR 2"-3" VALVE	1
	77031007	ASSEMBLY, TRIM, DRAIN	FOR 4"-8" VALVE	1
50	96920944	HOSE, FLEXIBLE, S.S., 1/4" NPT X 18" LONG		2
49	96686756	TUBING, PVC, 3/8" I.D. X 6FT LONG		1
48	96686756	NIPPLE, STEEL, GALV., 1/4" X 3-1/2"	SEE DETAIL VIEW A	1
47	98543243	NIPPLE, STEEL, GALV., 1/4" X 4"	SEE DETAIL VIEW A	1
46	98543224	NIPPLE, STEEL, GALV., 1/4" X 4-1/2"	FOR 2"-4" TRIMS	1
	98543217	NIPPLE, STEEL, GALV., 1/4" X 6"	FOR 6"-8" TRIMS	
45	9884011A	VALVE, BALL, 1/2" NPTF X 1/2" NPTM		1
44	6999991212	SWITCH, PRESSURE (EPS10-2)		1
43	6871020010	VALVE, SOLENOID, ASCO		1
42	6871020000	VALVE, SOLENOID, PARKER		1
41	6304001110	MODEL A PRESSURE MAINTENANCE DEVICE		1
40	98840237	VALVE, BALL, 1/4" NPTF x 1/4" NPTM		5
39	98840188	VALVE, CHECK, 1/4" NPTM x 1/4" NPTF		1
38	98840147	CHECK VALVE, 1/4" NPT, POPPET TYPE INLINE		1
37	98840103	VALVE, ANGLE, 1/2"		1
36	98815204	UNION, "O" RING SEAL, GALV., 1/2"		2
35	98815201	UNION, 1/4", IRON, G.J., GALV.		2
34	98815200	UNION, 1/2", IRON, G.J., GALV.		2
33	98761651	TEE, GLVN., 1/2"		1
32	98761649	TEE, GLVN., 1/2 X 1/4 X 1/2		3
31	98751005	FITTING, MULTIPORT, 3/4x1/2x1/2x1/2x1/2		1
30	98751002	FITTING, MULTIPORT, 3/4x1/2x3/4x1/2x1/2x1/4		1
29	98727607	STRAINER, 1/4"		1
28	98681630	REGULATOR, AIR LINE R44-283-RNKA		1
27	98614401	PIPE PLUG, IRON, SQ. HD., 3/4		2
26	98604406	PIPE PLUG, IRON, SQ. HD., 1/2		1
25	98543226	NIPPLE, STEEL, GALV., 1/4" X 1-1/2"		7
24	98543223	NIPPLE, STEEL, GALV., 1/2" X 1-1/2"		9
23	98543220	NIPPLE, STEEL, GALV., 1/4" X 3"		1
22	98543210	NIPPLE, STEEL, GALV., 1/2" X 2-1/2"		2
21	98240100	GAUGE, WATER PRESSURE (6 BAR), 3/8 BSPT		2
20	98240005	GAUGE, WATER PRESSURE (16 BAR), 3/8 BSPT		2
19	98174408	ELBOW, STREET, 1/4", GALV.		1
18	98174404	ELL, 1/4", MALL IRON, GALV.		3
17	98174401	ELL, 1/2", MALL IRON, GALV.		1
16	98174400	ELBOW, STREET, 1/2", GALV.		1
15	98085666	COUPLING, REDUCER, 1/2" x 1/4", GLVN.		4
14	98048022	BUSHING, REDUCER, 3/4" X 1/2", GALV.		3
13	98048000	BUSHING, REDUCER, 1/2" x 1/4", GALV.		1
12	96920912	FLEX LINE, 12"		1
11	96816904	VALVE, CHECK, 1/2"		3
10	96606607	TEE, GLVN., 1/2 X 1/2 X 1/4		2
9	95306255	CLAMP, HOSE, 1/2" CONSTANT TENSION, ZINC		8
8	92056817	SOLID CONNECTOR		1
7	92056810	CONNECTOR, 3/8" ID TUBE x 1/2" NPT		2
6	92056809	CONNECTOR, NO-LOSS, 3/8 x 1/2 BSPT		4
5	92056704	CONNECTOR, ELBOW, 3/8" ID TUBE x 1/2" NPT		4
4	78653800	ASSEMBLY, BALL DRIP, 1/2"		1
3	78653004	ASSEMBLY, VALVE CAUTION STATION, 1/2"		1
2	78653000	MODEL B MANUAL EMERGENCY STATION		1
1	-----	SEE TABLE ABOVE		1
ITEM NO.	PART NO.	DESCRIPTION	REMARKS	QTY.

**BILL OF MATERIALS**