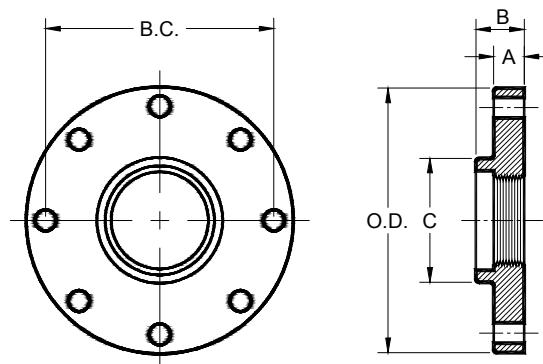


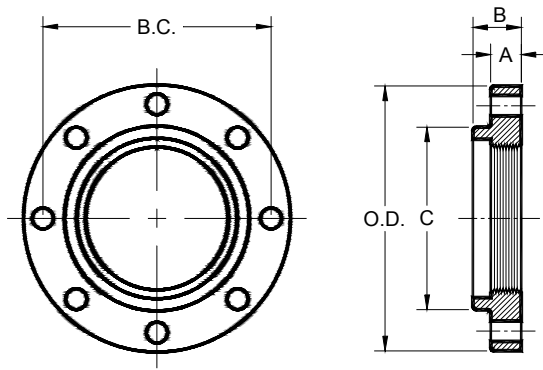
HI HUB THREADED 125 LB. FLANGES FOR DUCTILE PIPE (CI AND DI)

Nom. Pipe Size	OD Pipe	Flange Thk. A	Total Thk. B	Thread Length	OD Flange O.D.	Hub Dia. C	Bolt Circle B.C.	Bolt Hole dia.	Bolt dia. & length	No. of Bolt Holes	Wt
2	2.50	0.62	1.00	0.75	6.00	3.06	4.75	3/4	5/8 x 2 1/4	4	4
3	3.96	0.75	1.25	0.94	7.50	4.25	6.00	3/4	5/8 x 2 1/2	4	7
4	4.80	0.94	1.37	1.00	9.00	5.32	7.50	3/4	5/8 x 3	8	12
6	6.90	1.00	1.56	1.16	11.00	7.56	9.50	7/8	3/4 x 3 1/2	8	17
8	9.05	1.12	1.75	1.38	13.50	9.69	11.75	7/8	3/4 x 3 1/2	8	26
10	11.10	1.19	2.00	1.50	16.00	12.00	14.25	1	7/8 x 4	12	37
12	13.20	1.25	2.19	1.75	19.00	14.06	17.00	1	7/8 x 4	12	55
14	15.30	1.38	2.50	1.87	21.00	16.25	18.75	1 1/8	1 x 4 1/2	12	70
16	17.40	1.44	2.75	2.06	23.50	18.44	21.25	1 1/8	1 x 4 1/2	16	80
18	19.50	1.56	3.00	2.25	25.00	20.53	22.75	1 1/4	1 1/8 x 5	16	85
20	21.60	1.69	3.25	2.44	27.50	22.63	25.00	1 1/4	1 1/8 x 5	20	106
24	25.80	1.88	3.50	2.75	32.00	26.82	29.50	1 3/8	1 1/4 x 5 1/2	20	147
30	32.00	2.12	3.37	3.37	38.75	32.75	36.00	1 3/8	1 1/4 x 6 1/2	28	224
36	38.30	2.38	4.00	4.00	46.00	39.12	42.75	1 5/8	1 1/2 x 7	32	337
42	44.50	2.62	4.00	4.00	53.00	46.00	49.50	1 5/8	1 1/2 x 7 1/2	36	495
48	50.80	2.75	4.12	4.12	59.50	52.25	56.00	1 5/8	1 1/2 x 8	44	622
54	57.56	3.00	4.38	4.38	66.25	58.75	62.75	2	1 3/4 x 8 1/2	44	711



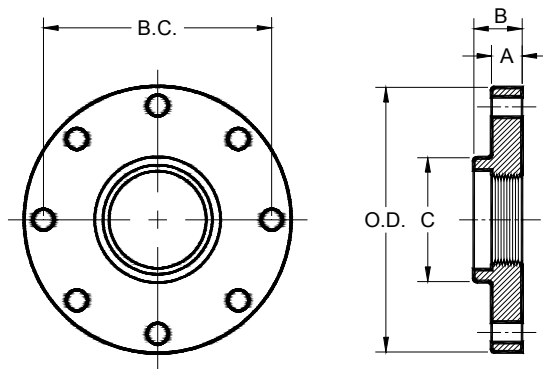
REDUCING 125 LB. FLANGES THREADED FOR DUCTILE PIPE (DI ONLY)

Nom. Pipe Size	OD Pipe Thread	Flange Thk. A	Total Thk. B	Thread Length	OD Flange O.D.	Hub Dia. C	Bolt Circle B.C.	Bolt Hole dia.	Bolt dia. & length	No. of Bolt Holes	Wt
4 x 3	3.96	0.94	1.37	0.94	9.00	4.25	7.50	3/4	5/8 x 3	8	16
6 x 4	4.80	1.00	1.56	1.00	11.00	5.32	9.50	7/8	3/4 x 3 1/2	8	25
8 x 4	4.80	1.12	1.75	1.00	13.50	5.32	11.75	7/8	3/4 x 3 1/2	8	40
8 x 6	6.90	1.12	1.75	1.16	13.50	7.56	11.75	7/8	3/4 x 3 1/2	8	35
10 x 8	9.05	1.19	2.00	1.38	16.00	9.69	14.25	1	7/8 x 4	12	50
12 x 8	9.05	1.25	2.19	1.38	19.00	9.69	17.00	1	7/8 x 4	12	85



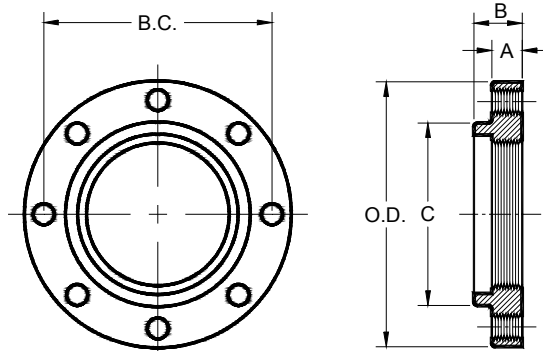
THREADED 125 LB. FLANGES FOR STEEL PIPE (CI AND DI)

Nom. Pipe Size	OD Pipe	Flange Thk. A	Total Thk. B	Thread Length	OD Flange O.D.	Hub Dia. C	Bolt Circle B.C.	Bolt Hole dia.	Bolt dia. & length	No. of Bolt Holes	Wt
2	2.375	0.62	1.00	0.96	6.00	3.06	4.75	3/4	5/8 x 2 1/2	4	6
2.5	2.875	0.69	1.12	1.06	7.00	3.56	5.50	3/4	5/8 x 2 1/2	4	7
3	3.500	0.75	1.19	1.12	7.50	4.25	6.00	3/4	5/8 x 2 1/2	4	8
4	4.500	0.94	1.31	1.25	9.00	5.32	7.50	3/4	5/8 x 3	8	12
6	6.625	1.00	1.56	1.50	11.00	7.56	9.50	7/8	3/4 x 3 1/2	8	17
8	8.625	1.12	1.75	1.69	13.50	9.69	11.75	7/8	3/4 x 3 1/2	8	24
10	10.750	1.19	1.94	1.88	16.00	11.94	14.25	1	7/8 x 4	12	36
12	12.750	1.25	2.19	2.12	19.00	14.06	17.00	1	7/8 x 4	12	55



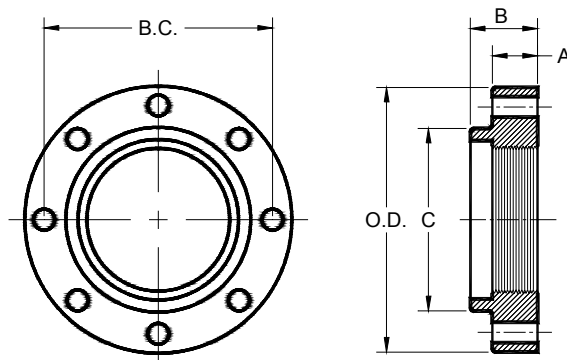
REDUCING 125 LB. FLANGES THREAD FOR STEEL PIPE (DI ONLY)

Nom. Pipe Size	OD Pipe Thread	Flange Thk. A	Total Thk. B	Thread Length	OD Flange O.D.	Hub Dia. C	Bolt Circle B.C.	Bolt Hole dia.	Bolt dia. & length	No. of Bolt Holes	Wt
4 x 3	3.500	0.94	1.31	1.12	9.00	4.25	7.50	3/4	5/8 x 3	8	16
6 x 4	4.500	1.00	1.56	1.25	11.00	5.32	9.50	7/8	3/4 x 3 1/2	8	24
8 x 4	4.500	1.12	1.75	1.25	13.50	5.32	11.75	7/8	3/4 x 3 1/2	8	44
8 x 6	6.625	1.12	1.75	1.50	13.50	7.56	11.75	7/8	3/4 x 3 1/2	8	31
10 x 6	6.625	1.19	1.94	1.50	16.00	7.56	14.25	1	7/8 x 4	12	50
10 x 8	8.625	1.19	1.94	1.69	16.00	9.69	14.25	1	7/8 x 4	12	55
12 x 6	6.625	1.25	2.19	1.50	19.00	7.56	17.00	1	7/8 x 4	12	60
12 x 8	8.625	1.25	2.19	1.69	19.00	9.69	17.00	1	7/8 x 4	12	72



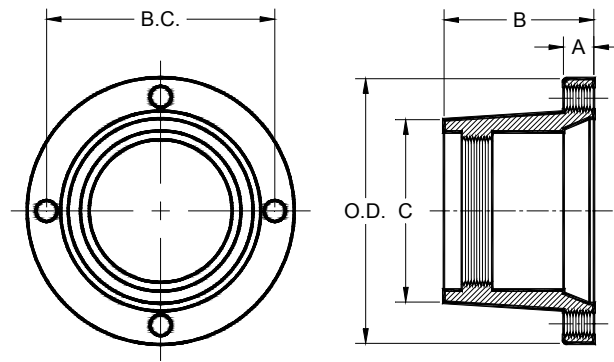
THREADED 125 LB. FLANGES TAPPED FOR STUDS FOR DUCTILE PIPE (CI AND DI)

Nom. Pipe Size	OD Pipe	Flange Thk. A	Total Thk. B	Thread Length	OD Flange O.D.	Hub Dia. C	Bolt Circle B.C.	Bolt Hole Threads (UNC-2A)	No. of Bolt Holes	Wt
3	3.96	0.75	1.25	0.94	7.50	4.25	6.00	5/8 - 11	4	7
4	4.80	0.94	1.37	1.00	9.00	5.32	7.50	5/8 - 11	8	12
6	6.90	1.00	1.56	1.16	11.00	7.56	9.50	3/4 - 10	8	17
8	9.05	1.12	1.75	1.38	13.50	9.69	11.75	3/4 - 10	8	26
10	11.10	1.19	2.00	1.50	16.00	12.00	14.25	7/8 - 9	12	37
12	13.20	1.25	2.19	1.75	19.00	14.06	17.00	7/8 - 9	12	55
14	15.30	1.38	2.50	1.87	21.00	16.25	18.75	1 - 8	12	70
16	17.40	1.44	2.75	2.06	23.50	18.44	21.25	1 - 8	16	80
18	19.50	1.56	3.00	2.25	25.00	20.53	22.75	1 1/8 - 7	16	85
20	21.60	1.69	3.25	2.44	27.50	22.63	25.00	1 1/8 - 7	20	106
24	25.80	1.88	3.50	2.75	32.00	26.82	29.50	1 1/4 - 7	20	147
30	32.00	2.12	3.37	3.37	38.75	32.75	36.00	1 1/4 - 7	28	224
36	38.30	2.38	4.00	4.00	46.00	39.12	42.75	1 1/2 - 6	32	337
42	44.50	2.62	4.00	4.00	53.00	46.00	49.50	1 1/2 - 6	36	495
48	50.80	2.75	4.12	4.12	59.50	52.25	56.00	1 1/2 - 6	44	622
54	57.56	3.00	4.38	4.38	66.25	58.75	62.75	1 3/4 - 5	44	711



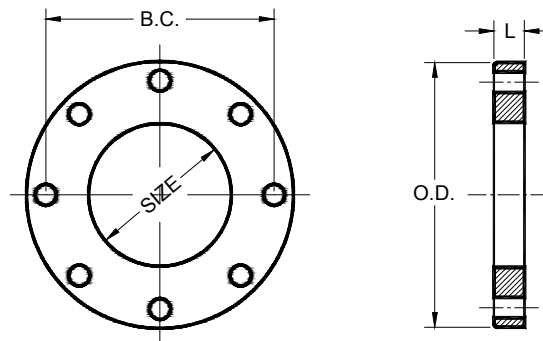
THREADED 250 LB. FLANGES FOR DUCTILE PIPE (CI AND DI)

Nom. Pipe Size	OD Pipe	Flange Thk. A	Total Thk. B	Thread Length	OD Flange O.D.	Hub Dia. C	Bolt Circle B.C.	Bolt Hole dia.	Bolt dia. & length	No. of Bolt Holes	Wt
3	3.96	1.12	1.56	1.19	8.25	4.62	6.62	7/8	3/4 x 3 1/2	8	10
4	4.80	1.25	1.75	1.31	10.00	5.75	7.88	7/8	3/4 x 4	8	19
6	6.90	1.44	1.94	1.56	12.50	8.12	10.62	7/8	3/4 x 4	12	31
8	9.05	1.62	2.19	1.75	15.00	10.25	13.00	1	7/8 x 4 1/2	12	47
10	11.10	1.88	2.38	1.94	17.50	12.62	15.25	1 1/8	1 x 5 1/2	16	70
12	13.20	2.00	2.56	2.19	20.50	14.75	17.75	1 1/4	1 1/8 x 5 1/2	16	114
14	15.30	2.12	2.69	2.25	23.00	16.25	20.25	1 1/4	1 1/8 x 6	20	122
16	17.40	2.25	2.88	2.50	25.50	18.38	22.50	1 3/8	1 1/4 x 6 1/2	20	159
18	19.50	2.38	3.00	2.56	28.00	20.53	24.75	1 3/8	1 1/4 x 6 1/2	24	205
20	21.60	2.50	3.31	2.87	30.50	22.63	27.00	1 3/8	1 1/4 x 7	24	220
24	25.80	2.75	3.75	3.25	36.00	26.82	32.00	1 5/8	1 1/2 x 7 1/2	24	342



DUCTILE IRON MJ THREADED BELL FOR DUCTILE PIPE

Nom. Pipe Size	OD Pipe	Flange Thk. A	Total Thk. B	Thread Length	OD Flange O.D.	Hub Dia. C	Bolt Circle B.C.	Bolt Hole Threads (UNC-2A)	No. of Bolt Holes	Wt
3	3.96	0.94	4.12	0.94	7.69	4.50	6.19	5/8 -11	4	11
4	4.80	1.00	4.25	1.00	9.12	5.32	7.50	3/4 - 10	4	15
6	6.90	1.06	4.43	1.16	11.12	7.56	9.50	3/4 - 10	6	22
8	9.05	1.12	4.75	1.38	13.37	9.73	11.75	3/4 - 10	6	35
10	11.10	1.19	4.87	1.50	15.69	12.06	14.00	3/4 - 10	8	46
12	13.20	1.25	5.12	1.75	17.94	14.16	16.25	3/4 - 10	8	55
14	15.30	1.31	6.50	1.87	20.31	16.25	18.75	3/4 - 10	10	94
16	17.40	1.38	6.75	2.06	22.56	18.44	21.00	3/4 - 10	12	118
18	19.50	1.44	7.00	2.25	24.83	20.53	23.25	3/4 - 10	12	125
20	21.60	1.50	7.25	2.44	27.08	22.63	25.50	3/4 - 10	14	150
24	25.80	1.62	7.50	2.75	31.58	26.82	30.00	3/4 - 10	16	235
30	32.00	1.81	9.13	3.37	39.12	32.75	36.88	1 - 8	20	375
36	38.30	2.00	9.75	4.00	46.00	39.12	43.75	1 - 8	24	500
42	44.50	2.00	10.50	4.00	53.12	46.00	50.62	1 1/4 - 7	28	735
48	50.80	2.00	11.00	4.12	60.00	52.25	57.50	1 1/4 - 7	32	940

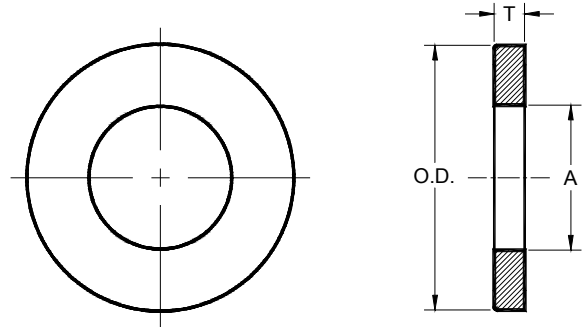


CI FILLER FLANGES

Nom. Pipe Size	OD Flange O.D.	Bolt Circle B.C.	Bolt Hole dia.	No. of Bolt Holes	Weight For Length (L)				
					3/4	1	1 1/2	2	3
4	9.00	7.50	3/4	8	9	12	19	25	39
6	11.00	9.50	7/8	8	12	16	23	33	50
8	13.50	11.75	7/8	8	16	22	37	44	70
10	16.00	14.25	1	12	23	30	43	60	88
12	19.00	17.00	1	12	27	42	64	78	129

DUCTILE IRON ANCHOR FLANGES

Nom. Pipe Size	Thickness T	OD Flange O.D.	ID Flange A	Weight
3	0.50	6.50	4.03	3
4	0.50	7.40	4.87	4
6	0.50	9.50	6.97	5
8	0.50	12.00	9.13	7
10	0.50	14.10	11.17	8
12	0.50	16.25	13.27	10
14	0.50	18.40	15.38	12
16	0.50	21.00	17.48	15
18	0.50	23.10	19.59	17
20	0.50	25.70	21.69	21
24	0.50	30.00	25.90	25
30	0.63	37.00	32.10	47
36	0.63	43.40	38.40	53
42	1.00	50.00	44.62	104
48	1.00	56.50	50.94	122
54	1.25	62.50	57.66	149



FLANGE ACCESSORY PACKS WITH 1/16" OR 1/8" THICK RUBBER (ASTM D2000 TYPE A) GASKET & HEX BOLTS & NUTS

Nom. Size	BOLTS	QTY	Weight
3	5/8 x 2 1/2	4	2
4	5/8 x 3	8	3
6	3/4 x 3 1/2	8	5
8	3/4 x 3 1/2	8	6
10	7/8 x 4	12	12
12	7/8 x 4	12	13
14	1 x 4 1/2	12	19
16	1 x 4 1/2	16	25
18	1 1/8 x 5	16	35
20	1 1/8 x 5	20	45
24	1 1/4 x 5 1/2	20	63
30	1 1/4 x 6 1/2	28	95
36	1 1/2 x 7	32	170
42	1 1/2 x 8	36	215
48	1 1/2 x 8	44	265
54	1 3/4 x 8 1/2	44	390

