



D.I. THREADED FITTINGS

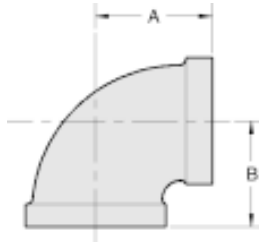


LISTED

LISTED

APPROVED

For fire protection services request submittal GRS 1.3

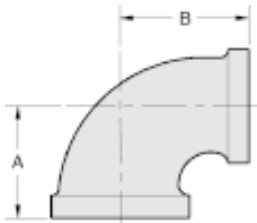


Ductile iron threaded fittings are UL, ULC listed and factory mutual approved for 500 psi service. Ductile iron per ASTM A 536 grade 65-45-12. Dimensions conform to ANSI B16.3 class 150. Threads are NPT per ANSI/ASME B1.20.1.

NOTICE: Ductile iron fittings have higher tensile strength than that of steel pipe. Therefore, over tightening can cause damage to pipe threads which may cause leakage. Ductile iron fitting should be tightened three turns beyond hand tight, but no more than four turns.

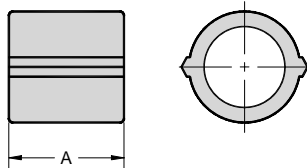
DUCTILE IRON 90 DEG. ELBOW

NOMINAL SIZE (INCH)	ITEM CODE #	MAX. WORKING P.S.I.	DIMENSIONS		WEIGHT EACH PIECE
			A	B	
1	DB90033	500	1.50	1.50	0.62
1 1/4	DB90044	500	1.75	1.75	0.90
1 1/2	DB90055	500	1.94	1.94	1.20
2	DB90066	500	2.25	2.25	1.85



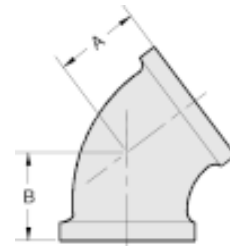
DUCTILE IRON RED.90 DEG. ELBOW

NOMINAL SIZE (INCH)	ITEM CODE #	MAX. WORKING P.S.I.	DIMENSIONS		WEIGHT EACH PIECE
			A	B	
1X1/2	DB90031	500	1.26	1.36	0.44
1X3/4	DB90032	500	1.37	1.45	0.52
1 1/4X1/2	DB90041	500	1.34	1.53	0.64
1 1/4X3/4	DB90042	500	1.45	1.62	0.72
1 1/4X1	DB90043	500	1.58	1.67	0.75
1 1/2X1	DB90053	500	1.65	1.80	0.92
1 1/2X1 1/4	DB90054	500	1.82	1.88	1.08
2X1/2	DB90061	500	1.49	1.88	1.08
2X3/4	DB90062	500	1.60	1.97	1.24
2X1	DB90063	500	1.73	2.02	1.40
2X1 1/4	DB90064	500	1.90	2.10	1.52
2X1 1/2	DB90065	500	2.02	2.16	1.65



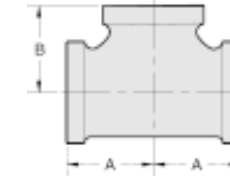
DUCTILE IRON COUPLING

NOMINAL SIZE (INCH)	ITEM CODE #	MAX. WORKING P.S.I.	DIMENSION	WEIGHT EACH PIECE
			A	
1	DCL033	500	1.67	0.40
1 1/4	DCL044	500	1.93	0.57
1 1/2	DCL055	500	2.15	0.75
2	DCL066	500	2.53	1.15



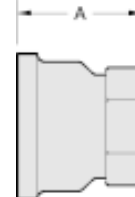
DUCTILE IRON 45 DEG. ELBOW

NOMINAL SIZE (INCH)	ITEM CODE #	MAX. WORKING P.S.I.	DIMENSIONS		WEIGHT EACH PIECE
			A	B	
1	DB45033	500	1.12	1.12	0.46
1 1/4	DB45044	500	1.29	1.29	0.73
1 1/2	DB45055	500	1.43	1.43	0.92
2	DB45066	500	1.68	1.68	1.50



DUCTILE IRON STRAIGHT TEE

NOMINAL SIZE (INCH)	ITEM CODE #	MAX. WORKING P.S.I.	DIMENSIONS		WEIGHT EACH PIECE
			A	B	
1	DT333	500	1.50	1.50	0.85
1 1/4	DT444	500	1.75	1.75	1.22
1 1/2	DT555	500	1.94	1.94	1.55
2	DT666	500	2.25	2.25	2.45



DUCTILE IRON RED. COUPLING

NOMINAL SIZE (INCH)	ITEM CODE #	MAX. WORKING P.S.I.	DIMENSION	WEIGHT EACH PIECE
			A	
1X1/2	DRC031	500	1.69	0.39
1X3/4	DRC032	500	1.69	0.53



D.I. THREADED FITTINGS

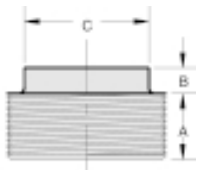
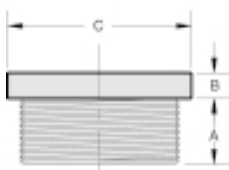
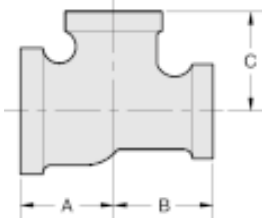


LISTED

LISTED

APPROVED

For fire protection services request submittal GRS 1.3



OUTSIDE HEAD

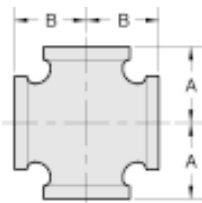
INSIDE HEAD

DUCTILE IRON REDUCING TEE

NOMINAL SIZE (INCH)	ITEM CODE #	MAX. WORKING P.S.I.	DIMENSIONS			WEIGHT EACH PIECE
			A	B	C	
1X1X1/2	DT331	500	1.26	1.26	1.36	0.64
1X1X3/4	DT332	500	1.37	1.37	1.45	0.73
1X1/2X1	DT313	500	1.50	1.36	1.50	0.71
1X3/4X1	DT323	500	1.50	1.45	1.50	0.76
1X1X1 1/4	DT334	500	1.67	1.67	1.58	0.98
1X1X1 1/2	DT335	500	1.80	1.80	1.65	1.16
1 1/4X1X1/2	DT431	500	1.34	1.26	1.53	0.82
1 1/4X1X3/4	DT432	500	1.45	1.37	1.62	0.90
1 1/4X1X1	DT433	500	1.58	1.50	1.67	1.00
1 1/4X1X1 1/4	DT434	500	1.75	1.67	1.75	1.08
1 1/4X1X1 1/2	DT435	500	1.88	1.80	1.82	1.42
1 1/4X1 1/4X1/2	DT441	500	1.34	1.34	1.53	0.86
1 1/4X1 1/4X3/4	DT442	500	1.45	1.45	1.62	0.92
1 1/4X1 1/4X1	DT443	500	1.58	1.58	1.67	0.95
1 1/4X1 1/4X1 1/2	DT445	500	1.88	1.88	1.82	1.45
1 1/4X1 1/4X2	DT446	500	2.10	2.10	1.90	1.75
1 1/2X1X1/2	DT531	500	1.41	1.34	1.66	0.95
1 1/2X1X3/4	DT532	500	1.52	1.37	1.75	1.14
1 1/2X1X1	DT533	500	1.65	1.50	1.80	1.17
1 1/2X1X1 1/4	DT534	500	1.82	1.67	1.88	1.34
1 1/2X1X1 1/2	DT535	500	1.94	1.80	1.94	1.45
1 1/2X1 1/4X1/2	DT541	500	1.41	1.34	1.66	1.05
1 1/2X1 1/4X3/4	DT542	500	1.52	1.45	1.75	1.15
1 1/2X1 1/4X1	DT543	500	1.65	1.58	1.80	1.25
1 1/2X1 1/4X2	DT546	500	2.16	2.10	2.02	1.90
1 1/2X1 1/2X1/2	DT551	500	1.41	1.41	1.16	1.15
1 1/2X1 1/2X3/4	DT552	500	1.52	1.52	1.75	1.24
1 1/2X1 1/2X1	DT553	500	1.65	1.65	1.80	1.30
1 1/2X1 1/2X1 1/4	DT554	500	1.82	1.82	1.88	1.48
1 1/2X1 1/2X2	DT556	500	2.16	2.16	2.02	1.98
2X1X2	DT636	500	2.25	2.02	2.25	2.15
2X1 1/4X2	DT646	500	2.25	2.10	2.25	2.30
2X1 1/2X1/2	DT651	500	1.49	1.41	1.88	1.50
2X1 1/2X3/4	DT652	500	1.60	1.52	1.97	1.62
2X1 1/2X1	DT653	500	1.73	1.65	2.02	1.64
2X1 1/2X1 1/4	DT654	500	1.90	1.82	2.10	1.80
2X1 1/2X1 1/2	DT655	500	2.02	1.94	2.16	2.00
2X1 1/2X2	DT656	500	2.25	2.16	2.25	2.35
2X2X1/2	DT661	500	1.49	1.49	1.88	1.60
2X2X3/4	DT662	500	1.60	1.60	1.97	1.68
2X2X1	DT663	500	1.73	1.73	2.02	1.85
2X2X1 1/4	DT664	500	1.90	1.90	2.10	2.04
2X2X1 1/2	DT665	500	2.02	2.02	2.16	2.18
2X2X2 1/2	DT667	500	2.60	2.60	2.39	3.61
2 1/2X2X3/4	DT762	500	1.74	1.60	2.32	2.28

DUCTILE IRON BUSHINGS

NOMINAL SIZE (INCH)	ITEM CODE #	DIMENSIONS			STYLE	WT. EACH
		A	B	C		
1x1/2	DBUSH31	0.75	0.25	1.42	OUT	0.22
1x3/4	DBUSH32	0.75	0.25	1.42	OUT	0.17
1 1/4x1	DBUSH43	0.80	0.28	1.76	OUT	0.28
1 1/2x1	DBUSH53	0.83	0.31	2.00	OUT	0.44
1 1/2x1 1/4	DBUSH54	0.83	0.31	2.00	OUT	0.30
2x1	DBUSH63	0.88	0.41	1.95	IN	0.66
2x1 1/4	DBUSH64	0.88	0.34	2.48	OUT	0.72
2x1 1/2	DBUSH65	0.88	0.34	2.48	OUT	0.61



DUCTILE IRON CROSS

NOMINAL SIZE (INCH)	ITEM CODE #	MAX. WORKING P.S.I.	DIMENSIONS		WEIGHT EACH PIECE
			A	B	
1	DX033	500	1.50	1.50	0.98
1 1/4	DX044	500	1.75	1.75	1.50
1 1/2	DX055	500	1.94	1.94	1.90
2	DX066	500	2.25	2.25	2.95
1 1/4X1	DX043	500	1.58	1.67	1.27
1 1/2X1	DX053	500	1.65	1.80	1.48
2X1	DX063	500	1.73	2.02	2.10



DUCTILE IRON CAP

NOMINAL SIZE (INCH)	ITEM CODE #	MAX. WORKING P.S.I.	DIMENSION	WEIGHT EACH PIECE
			A	
1	DCP003	500	1.16	0.32
1 1/4	DCP004	500	1.28	0.43
1 1/2	DCP005	500	1.33	0.60
2	DCP006	500	1.45	0.91