



# C.I. THREADED FITTINGS



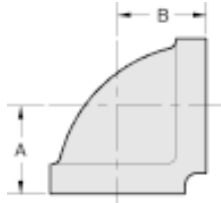
LISTED

LISTED

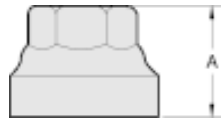
APPROVED

For fire protection services request submittal GRS 1.3

Cast iron threaded fittings are UL, ULC listed and factory mutual approved for 300 psi service. Gray iron per ASTM A126 class B. Dimensions conform to ANSI B16.4 class 125 except plugs conform to ASME B16.14. Threads are NPT per ANSI/ASME B1.20.1.



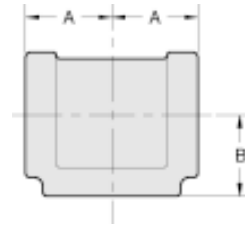
CAST IRON 90 DEGREE ELBOW					
NOMINAL SIZE (INCH)	ITEM CODE #	MAX. WORKING P.S.I.	DIMENSIONS		WEIGHT EACH PIECE
			A	B	
1	CB90033	300	1.50	1.50	0.95
1 1/4	CB90044	300	1.75	1.75	1.34
1 1/2	CB90055	300	1.94	1.94	1.80
2	CB90066	300	2.25	2.25	2.90
2 1/2	CB90077	300	2.70	2.70	4.75



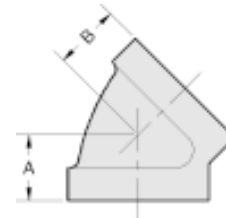
CAST IRON RED. COUPLING				
NOMINAL SIZE (INCH)	ITEM CODE #	MAX. WORKING P.S.I.	DIMENSION	WEIGHT EACH PIECE
			A	
1X1/2	CRC031	300	1.70	0.62
1X3/4	CRC032	300	1.70	0.80



CAST IRON RED. 90 DEG. ELBOW					
NOMINAL SIZE (INCH)	ITEM CODE #	MAX. WORKING P.S.I.	DIMENSIONS		WEIGHT EACH PIECE
			A	B	
1X1/2	CB90031	300	1.26	1.36	0.64
1X3/4	CB90032	300	1.37	1.45	0.87
1 1/4X1/2	CB90041	300	1.34	1.53	0.96
1 1/4X3/4	CB90042	300	1.45	1.62	1.13
1 1/4X1	CB90043	300	1.58	1.67	1.16
1 1/2x1 1/2	CB90051	300	1.41	1.66	1.17
1 1/2x3/4	CB90052	300	1.52	1.75	1.28
1 1/2X1	CB90053	300	1.65	1.80	1.51
1 1/2X1 1/4	CB90054	300	1.82	1.88	1.62
2X1/2	CB90061	300	1.49	1.88	2.00
2X3/4	CB90062	300	1.60	1.97	2.05
2X1	CB90063	300	1.73	2.02	2.10
2X1 1/4	CB90064	300	1.90	2.10	2.30
2X1 1/2	CB90065	300	2.02	2.16	2.60



CAST IRON STRAIGHT TEE					
NOMINAL SIZE (INCH)	ITEM CODE #	MAX. WORKING P.S.I.	DIMENSIONS		WEIGHT EACH PIECE
			A	B	
1	CT333	300	1.50	1.50	1.21
1 1/4	CT444	300	1.75	1.75	1.87
1 1/2	CT555	300	1.94	1.94	2.51
2	CT666	300	2.25	2.25	3.96
2 1/2	CT777	300	2.70	2.70	6.45



CAST IRON 45 DEGREE ELBOW					
NOMINAL SIZE (INCH)	ITEM CODE #	MAX. WORKING P.S.I.	DIMENSIONS		WEIGHT EACH PIECE
			A	B	
1	CB45033	300	1.12	1.12	0.84
1 1/4	CB45044	300	1.29	1.29	1.40
1 1/2	CB45055	300	1.43	1.43	1.80
2	CB45066	300	1.68	1.68	2.79



CAST IRON PLUGS				
NOMINAL SIZE (INCH)	ITEM CODE #	MAX. WORKING P.S.I.	DIMENSION	WEIGHT EACH PIECE
			A	
1/2	CPL001	300	0.94	0.10
3/4	CPL002	300	1.07	0.17
1	CPL003	300	1.25	0.28
1 1/4	CPL004	300	1.36	0.44
1 1/2	CPL005	300	1.45	0.62
2	CPL006	300	1.56	0.91



# C.I. THREADED FITTINGS

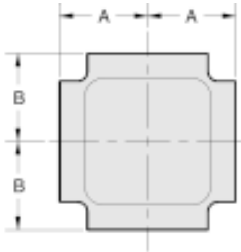


LISTED

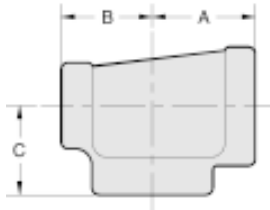
LISTED

APPROVED

For fire protection services request submittal GRS 1.3



CAST IRON CROSS					
NOMINAL SIZE (INCH)	ITEM CODE #	MAX. WORKING P.S.I.	DIMENSIONS		WEIGHT EACH PIECE
			A	B	
1	CX033	300	1.50	1.50	1.54
1 1/4	CX044	300	1.75	1.75	2.40
1 1/2	CX055	300	1.94	1.94	3.10
2	CX066	300	2.25	2.25	4.00
1 1/4X1	CX043	300	1.58	1.67	2.05
1 1/2X1	CX053	300	1.65	1.80	2.40
2X1	CX063	300	1.73	2.02	2.75



CAST IRON REDUCING TEE						
NOMINAL SIZE (INCH)	ITEM CODE #	MAX. WORKING P.S.I.	DIMENSIONS			WEIGHT EACH PIECE
			A	B	C	
1X1X1/2	CT331	300	1.26	1.26	1.36	0.95
1X1X3/4	CT332	300	1.37	1.37	1.45	1.10
1X1/2X1	CT313	300	1.50	1.36	1.50	1.08
1X3/4X1	CT323	300	1.50	1.45	1.50	1.18
1X1X1 1/4	CT334	300	1.67	1.67	1.58	1.52
1X1X1 1/2	CT335	300	1.80	1.80	1.65	1.73
1 1/4X1X1/2	CT431	300	1.34	1.26	1.53	1.17
1 1/4X1X3/4	CT432	300	1.45	1.37	1.62	1.38
1 1/4X1X1	CT433	300	1.58	1.50	1.57	1.47
1 1/4X1X1 1/4	CT434	300	1.75	1.67	1.75	1.80
1 1/4X1X1 1/2	CT435	300	1.88	1.80	1.82	2.05
1 1/4X1 1/4X1/2	CT441	300	1.34	1.34	1.53	1.37
1 1/4X1 1/4X3/4	CT442	300	1.45	1.45	1.62	1.54
1 1/4X1 1/4X1	CT443	300	1.58	1.58	1.67	1.65
1 1/4X1 1/4X1 1/2	CT445	300	1.88	1.88	1.82	2.21
1 1/4X1 1/4X2	CT446	300	2.10	2.10	1.90	2.55
1 1/2X1X1/2	CT531	300	1.41	1.34	1.66	1.41
1 1/2X1X3/4	CT532	300	1.52	1.37	1.75	1.65
1 1/2X1X1	CT533	300	1.65	1.50	1.80	1.65
1 1/2X1X1 1/4	CT534	300	1.82	1.67	1.88	2.00
1 1/2X1X1 1/2	CT535	300	1.94	1.80	1.94	2.30
1 1/2X1 1/4X1/2	CT541	300	1.41	1.34	1.66	1.58
1 1/2X1 1/4X3/4	CT542	300	1.52	1.45	1.75	1.72
1 1/2X1 1/4X1	CT543	300	1.65	1.58	1.80	1.85
1 1/2x1 1/4x1 1/4	CT544	300	1.82	1.75	1.88	2.22
1 1/2x1 1/4x1 1/2	CT545	300	1.94	1.88	1.94	2.45
1 1/2X1 1/4X2	CT546	300	2.16	2.10	2.02	2.80
1 1/2X1 1/2X1/2	CT551	300	1.41	1.41	1.66	1.76
1 1/2X1 1/2X3/4	CT552	300	1.52	1.52	1.75	1.87
1 1/2X1 1/2X1	CT553	300	1.65	1.65	1.80	1.94
1 1/2X1 1/2X1 1/4	CT554	300	1.82	1.82	1.88	2.29
1 1/2X1 1/2X2	CT556	300	2.16	2.16	2.02	3.28
2X1X2	CT636	300	2.25	2.02	2.25	3.40
2X1 1/4X2	CT646	300	2.25	2.10	2.25	2.80
2X1 1/2X1/2	CT651	300	1.49	1.41	1.88	2.09
2X1 1/2X3/4	CT652	300	1.60	1.52	1.97	2.40
2X1 1/2X1	CT653	300	1.73	1.65	2.02	2.54
2X1 1/2X1 1/4	CT654	300	1.90	1.82	2.10	2.85
2X1 1/2X1 1/2	CT655	300	1.49	1.41	1.88	2.24
2X1 1/2X2	CT656	300	2.25	2.16	2.25	3.75
2X2X1/2	CT661	300	1.49	1.49	1.88	2.60
2X2X3/4	CT662	300	1.60	1.60	1.97	2.71
2X2X1	CT663	300	1.73	1.73	2.02	2.97
2X2X1 1/4	CT664	300	1.90	1.90	2.10	3.32
2X2X1 1/2	CT665	300	2.02	2.02	2.16	3.72
2x2x2 1/2	CT667	300	2.60	2.60	2.39	5.10