



GROOVED VALVES FOR FIRE PROTECTION



LISTED

LISTED

APPROVED

For fire protection services request submittal GRS 1.3

MODEL GBV-4 IS UL & ULC AND FACTORY MUTUAL APPROVED

Fire Protection Valve. UL & LC Listed, FMRC Approved. 2 1/2" - 8" UL LISTED FOR Indoor & Outdoor Service
Grooved mechanical end connections. Nylon coated ductile iron. Extended neck.
Elastomer encapsulated disc. Supplied with two internal supervisory switches.
300 PSI Non-Shock Cold Water 2 1/2" - 8"

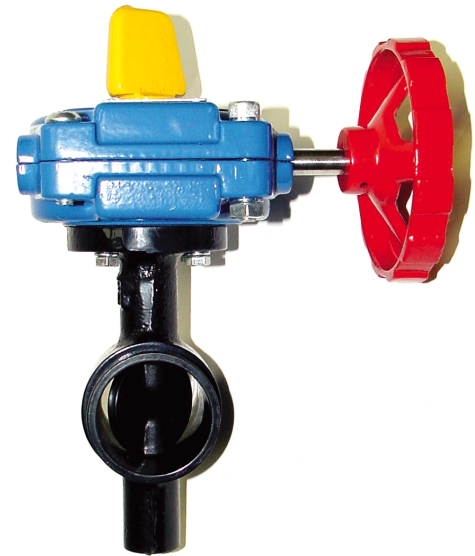
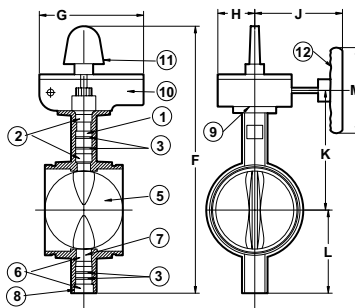
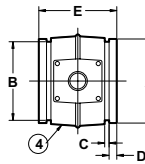
MATERIAL LIST

PART	SPECIFICATION
1. Upper Stem	Stainless Steel AISI 420
2. Upper Bushing	Carbon Steel (Fiber-Flon+Glass Coating)
3. " O " Ring	EPDM
4. Body	Ductile Iron ASTM A-536 with Nylon Coating
5. Disc	Ductile Iron ASTM A-536 with EPDM Encapsulation
6. Lower Bushing	Carbon Steel (Fiber-Flon+Glass Coating)
7. Lower Stem	Stainless Steel AISI 420
8. Dust Plug	EPDM
9. Nameplate	Aluminum
10. Gear Operator	Ductile Iron ASTM A-536, Powder Coated
11. Indicator Flag	Ductile Iron ASTM A-536, Powder Coated
12. Handwheel	Carbon Steel ASTM A 619

DIMENSIONS - WEIGHTS

SIZE	A	B	C	D	E	F	G
2 1/2"	2.88	2.72	0.31	0.63	3.72	12.48	6.81
3"	3.50	3.34	0.31	0.63	3.80	13.03	6.81
4"	4.50	4.33	0.38	0.63	4.54	14.96	6.81
6"	6.63	6.45	0.38	0.63	5.25	17.79	6.81
8"	8.63	8.44	0.44	0.75	5.81	19.72	6.81

SIZE	H	J	K	L	M	Weight (lbs.)
2 1/2"	2.95	5.31	5.31	3.35	4.92	18
3"	2.95	5.31	5.60	3.62	4.92	20
4"	2.95	5.31	6.89	4.25	4.92	24
6"	2.95	7.60	8.27	5.71	8.86	34
8"	2.95	7.60	9.21	6.69	8.86	50



MODEL GBV-3 IS UL LISTED AND FACTORY MUTUAL APPROVED

Fire Protection Valve. 2 1/2" - 8" For Indoor and Outdoor Service.
10" for Indoor Service Only. Grooved mechanical end connections. Nylon coated ductile iron
Extended neck. Elastomer encapsulated disc. Supplied with internal supervisory switches. Made in the USA.
300 PSI Non-Shock Cold Water 2 1/2" - 8"
175 PSI Non-Shock Cold Water 10"

MATERIAL LIST

PART	SPECIFICATION
1. Upper Stem	Stainless Steel, ASTM A-582 Type 416
2. Upper Bushing	PTFE Bronze Sintered on Steel
3. " O " Ring	Buna-N
4. Body	Ductile Iron ASTM A-395 with Nylon Coating
5. Disc	Ductile Iron ASTM A-395 with EPDM Encapsulation
6. Lower Bushing	PTFE Bronze Sintered on Steel
7. Lower Stem	Stainless Steel, ASTM A-582 Type 416
8. Dust Plug	PVC
9. Nameplate	Aluminum
10. Gear Operator	Cast Iron and Steel
11. Indicator Flag	Cast Iron
12. Handwheel	Cast Iron

DIMENSIONS - WEIGHTS

SIZE	A	B	C	D	E	F	G	H	J
2 1/2"	2.88	2.72	0.31	0.63	3.85	2.42	11.71	3.63	4.18
3"	3.50	3.34	0.31	0.63	3.85	2.86	12.25	3.63	4.18
4"	4.50	4.33	0.38	0.63	4.56	3.84	13.95	3.63	4.18
5"	5.56	5.39	0.38	0.63	5.86	4.79	14.93	3.63	4.18
6"	6.63	6.45	0.38	0.63	5.86	5.73	17.31	3.63	4.18
8"	8.63	8.44	0.44	0.75	5.26	7.71	19.20	3.63	4.18
10"	10.75	10.56	0.50	0.75	6.29	9.56	25.11	4.38	3.00

SIZE	K	L	M	N	P	Q	R	Weight (lbs.)
2 1/2"	2.50	7.81	5.43	4.19	3.25	6.00	3.46	22
3"	2.50	7.81	5.68	4.44	3.54	6.00	3.97	23
4"	2.50	7.81	6.58	5.33	4.35	6.00	5.03	27
5"	2.50	7.81	7.07	5.83	4.84	6.00	6.27	35
6"	2.50	7.81	8.35	7.11	5.93	6.00	7.25	42
8"	2.50	7.81	9.29	8.05	6.87	6.00	9.25	47
10"	3.00	7.68	11.50	9.86	9.17	9.00	11.25	62

