



WELD FITTINGS



LISTED

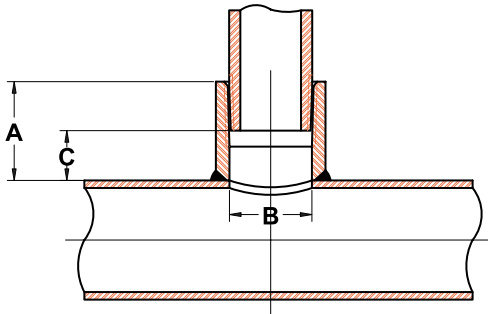
LISTED

APPROVED

For fire protection services request submittal GRS 1.3

MT-4 WELD OUTLETS

- MT-4 Weld Outlet Fittings provide a threaded outlet branch connection.
- Fittings are forged steel per ASTM A105 and are available in outlet sizes 1/2" - 2" for 1 1/4" - 8" run sizes.
- May be installed on all schedules of steel pipe.
- Each outlet size requires only one hole size, minimizing hole saws/drills needed for installation.
- Threads comply with ANSI/ASME B1.20.1 for NPT
- Fittings are contoured to provide a precise fit at the opening in the run pipe and conforms to standard practice MSS SP-97.
- Weld bevel is standard 37 1/2°
- All fittings are UL/ULC Listed and FM Approved for use in fire protection systems at 175 PSI for schedule 5 pipe and 300 PSI for schedule 7 pipe and above.



Outlet Size	Nominal Size	Outlet Height (Inches) A	Inside Diameter (Inches) B	Recommended Hole Size (Inches)	Take Out (Inches) C
1/4 x	1 1/4 1 1/2-2 2-2 1/2 2 1/2-3 3-4 5-8	1.375	1.490	5/8 (.625)	0.687
3/4 x	1-1 1/4 1 1/4-1 1/2 1 1/2-2 2-2 1/2 2 1/2-8	1.625	1.610	7/8 (.875)	0.937
1 x	1 1/4-1 1/2 1 1/2-2 2-2 1/2 2 1/2-3 3-4 5-8	1.750	2.067	1 1/8 (1.125)	0.593



WELD FITTINGS



LISTED

LISTED

APPROVED

For fire protection services request submittal GRS 1.3

MT-5 GROOVED WELDING OUTLETS

**TYPE 40 CG (STANDARD WT.* CUT GROOVE)

**TYPE 40 RG (STANDARD WT.* ROLL GROOVE)

**TYPE 40 MT (STANDARD WT.* MALE THREAD)

(*EXCEPT 8" OUTLET: SCH 30)



DIMENSIONS AND WEIGHTS (INCHES/POUNDS)

NOMINAL OUTLET SIZE A	NOMINAL HEADER SIZE B	STANDARD LENGTH C	OUTLET DIMENSIONS			APPROX WEIGHT EACH												
			INSIDE DIAMETER D	OUTSIDE DIAMETER E	WALL THICKNESS F													
1	1	3	1.049	1.315	0.133	.44												
	1 1/4																	
	1 1/2																	
	2																	
	2 1/2																	
	3																	
	4																	
	5																	
1 1/4	1 1/4	3	1.368	1.660	0.140	.56												
	1 1/2																	
	2																	
	2 1/2																	
	3																	
	4																	
	5																	
	6																	
1 1/2	1 1/2	3	1.610	1.900	0.145	.7												
	2																	
	2 1/2																	
	3																	
	4																	
	5																	
	6																	
	8																	
2	2	3	2.067	2.375	0.154	.9												
	2 1/2																	
	3																	
	3 1/2																	
	4																	
	5																	
	6																	
	8																	
2 1/2	2 1/2	3	2.469	2.875	0.203	1.4												
	3																	
	3 1/2																	
	4																	
	5																	
	6																	
	8																	
	3						3	3	3.068	3.500	0.216	2.1						
3 1/2																		
4																		
5																		
6																		
8																		
4		4	4	4.026	4.500	0.237	3.4											
		5																
	6																	
	8																	
	5	5						4	5.047	5.563	0.258	5.0						
		6																
		8																
		6											6	4	6.065	6.625	0.280	7.0
8																		
8			8	4	7.981	8.625	0.277						10.4					

TYPE 10 RG (LIGHTWEIGHT ROLL GROOVE)

NOMINAL OUTLET SIZE A	NOMINAL HEADER SIZE B	STANDARD LENGTH C	OUTLET DIMENSIONS			APPROX WEIGHT EACH												
			INSIDE DIAMETER D	OUTSIDE DIAMETER E	WALL THICKNESS F													
1	1	3	1.097	1.315	0.109	0.4												
	1 1/4																	
	1 1/2																	
	2																	
	2 1/2																	
	4																	
	5																	
	6																	
1 1/4	1 1/4	3	1.442	1.680	0.109	0.5												
	1 1/2																	
	2																	
	2 1/2																	
	3																	
	4																	
	5																	
	6																	
1 1/2	1 1/2	3	1.682	1.900	0.109	0.6												
	2																	
	2 1/2																	
	3																	
	4																	
	5																	
	6																	
	8																	
2	2	3	2.157	2.375	0.109	0.7												
	2 1/2																	
	3																	
	3 1/2																	
	4																	
	5																	
	6																	
	8																	
2 1/2	2 1/2	3	2.635	2.875	0.120	1.0												
	3																	
	3 1/2																	
	4																	
	5																	
	6																	
	8																	
	3						3	3	3.260	3.500	0.120	1.2						
3 1/2																		
4																		
5																		
6																		
8																		
4		4	4	4.260	4.500	0.120	2.1											
		5																
	6																	
	8																	
	5	5						4	5.295	5.563	0.134	3.0						
		6																
		8																
		6											6	4	6.357	6.625	0.134	3.8
8																		
8			8	4	8.329	8.625	0.188						6.2					

**Federal Specifications: WW-P-406D. WW-P-404D