



GROOVED FITTINGS/ MECHANICAL TEES

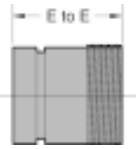


LISTED

LISTED

APPROVED

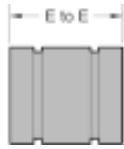
For fire protection services request submittal GRS 1.3



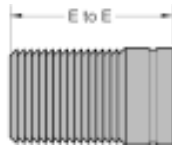
N - 1
G x MPT



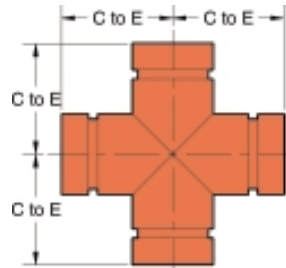
N - 2
G x B



N - 3
G x G



N - 4
G x H



N-1 N-2 N-3 ADAPTER NIPPLES		
NOMINAL SIZE IN. (mm)	END to END IN. (mm)	APPROX. WEIGHT EACH Lbs. (Kg)
1 25	3.00 76	0.40 0.18
1 1/4 32	4.00 102	0.80 0.36
1 1/2 40	4.00 102	0.90 0.41
2 50	4.00 102	1.20 0.54
2 1/2 65	4.00 102	1.90 0.86
3 80	4.00 102	2.50 1.13
4 100	6.00 152	5.50 2.49
5 125	6.00 152	7.40 3.36
6 150	6.00 152	9.50 4.31
8 200	6.00 152	14.20 6.44
10 250	8.00 203	27.00 12.25
12 300	8.00 203	33.00 14.97

N-4 HOSE NIPPLE		
NOMINAL SIZE IN. (mm)	END to END IN. (mm)	APPROX. WEIGHT EACH Lbs. (Kg)
1 25	3.25 83	0.40 0.18
1 1/4 32	3.62 92	0.70 0.32
1 1/4 40	4.00 102	0.80 0.36
2 50	4.62 117	1.3 0.59
2 1/2 65	5.50 140	2.1 0.95
3 80	6.00 152	3.3 1.50
4 100	7.25 184	5.5 2.49
5 125	9.75 248	8.1 3.67
6 150	11.00 279	13.2 5.99
8 200	12.50 318	24.0 10.88
10 250	14.00 356	29.00 13.15
12 300	16.00 406	46.00 20.86

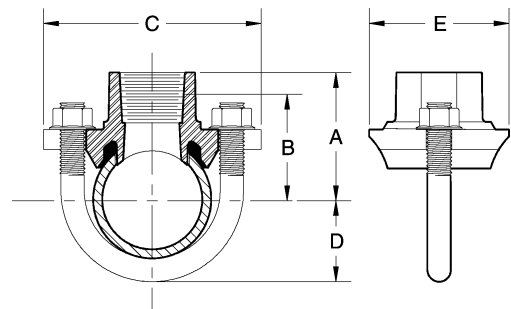
X-1 CROSS (SW)		
NOMINAL SIZE IN. (mm)	END to END IN. (mm)	APPROX. WEIGHT EACH Lbs. (Kg)
1 1/4 32	3.75 95	2.0 0.9
1 1/2 40	3.75 95	2.2 1.0
2 50	3.75 95	3.0 1.4
2 1/2 65	3.75 95	5.0 2.3
3 80	4.25 108	7.1 3.2
4 100	5.00 127	11.9 5.4
5 125	5.25 133	17.1 7.8
6 150	6.50 165	27.5 12.5
8 200	7.75 197	47.0 21.3
10 250	9.00 229	68.0 30.8
12 300	10.00 254	107.0 48.5

SW = Segmentally welded steel
(d) = Ductile iron

Model MT-3 & MT-9 Mechanical tee serves the same function as MT-1 & MT-8 but uses a steel electro plated u-bolt to save space and for easier installation in tight places. It is ideal for direct connections with sprinkler heads and drop nipples.

- HOUSING:** Ductile iron ASTM A536 grade 65-45-12.
- COATING:** Zinc electroplated
- U - BOLT:** Carbon steel SAE grade 2, zinc plated.
- NUT:** Carbon steel ASTM A194, zinc plated.
- GASKET:** EPDM (-30...F to + 230...F)
- THREADS:** MT-3 NPT per ANSI/ASME B1.20.1
MT-9 British standard parallel (BSP) per BS21

MT-3 & MT-9 MECHANICAL TEES								
NOMINAL SIZE IN. (mm)	MAX. WORKING P.S.I./ (K.P.a)	HOLE SIZE IN. (mm)	DIMENSIONS -Inch/mm					APPROX. WEIGHT EACH Lbs. (Kg)
			A	B	C	D	E	
1 1/4 x 1/2 32 x 25	300 2065	1.19 30	2.14 54	1.64 42	3.50 89	1.21 31	2.25 57	0.83 0.4
1 1/4 x 3/4 32 x 19	300 2065	1.19 30	2.14 54	1.64 42	3.50 89	1.21 31	2.25 57	0.87 0.4
1 1/4 x 1 32 x 25	300 2065	1.19 30	2.27 58	1.61 41	3.50 89	1.21 31	2.25 57	1.06 0.5
1 1/2 x 1/2 40 x 12	300 2065	1.19 30	2.26 57	1.76 45	3.50 89	1.33 34	2.25 57	0.83 0.4
1 1/2 x 3/4 40 x 19	300 2065	1.19 30	2.26 57	1.76 45	3.50 89	1.33 34	2.25 57	0.87 0.4
1 1/2 x 1 40 x 25	300 2065	1.19 30	2.39 61	1.73 44	3.50 89	1.33 34	2.25 57	1.06 0.5
2 x 1/2 50 x 12	300 2065	1.19 30	2.51 64	2.01 51	3.75 95	1.56 39	2.25 57	0.87 0.4
2 x 3/4 50 x 19	300 2065	1.19 30	2.51 64	2.01 51	3.75 95	1.56 39	2.25 57	0.94 0.4
2 x 1 50 x 25	300 2065	1.19 30	2.64 67	1.98 50	3.75 95	1.56 39	2.25 57	1.09 0.5
2 1/2 x 1/2 65 x 12	300 2065	1.19 30	2.76 70	2.26 57	4.25 108	1.81 46	2.25 57	0.89 0.4
2 1/2 x 3/4 65 x 19	300 2065	1.19 30	2.76 70	2.26 57	4.25 108	1.81 46	2.25 57	0.98 0.4
2 1/2 x 1 65 x 25	300 2065	1.19 30	2.88 73	2.22 56	4.25 108	1.81 46	2.25 57	1.14 0.5
3 O.D.x1/2 76 x 12	300 2065	1.19 30	2.82 72	2.32 59	4.25 108	1.88 47	2.25 57	0.89 0.4
3 O.D.x3/4 76 x 19	300 2065	1.19 30	2.82 72	2.32 59	4.25 108	1.88 47	2.25 57	0.98 0.4
3 O.D.x1 76 x 25	300 2065	1.19 30	2.95 75	2.29 58	4.25 108	1.88 47	2.25 57	1.14 0.5





MECHANICAL TEES



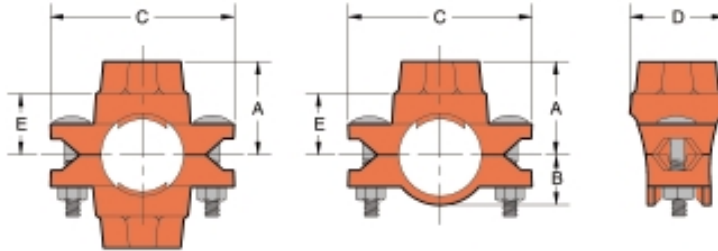
LISTED

LISTED

APPROVED

For fire protection services request submittal GRS 1.3

Mechanical branch connections for reducing branch outlets without welding. The MT-1 is a bolted saddle type fitting with NPT female threaded outlets. Design assures superior sealing, full pipe support, excellent stability and easy installation



MT-1 THREADED MECHANICAL BRANCH TEE

NOMINAL SIZE IN. (mm)	UL or FM MAX. WORKING P.S.I./ * (kPa)	HOLE DIA. +.125/-0.0 IN. (mm)	NUTS/BOLTS (INCH) QTY. SIZE		DIMENSIONS -Inch/mm					APPROX. WEIGHT EACH Lbs. (Kg)
					A	B	C	D	E	
2x1 50x25	300 2065	1.50 38	2	3/8x2	2.62 67	1.58 40	4.62 117	2.47 63	1.96 50	1.70 2.8
2x1 1/4 50x32	300 2065	1.75 44	2	3/8x2	2.62 67	1.58 40	4.62 117	2.47 63	1.94 49	1.70 0.8
2x1 1/2 50x40	300 2065	1.75 44	2	3/8x2	2.62 67	1.58 40	4.62 117	2.86 73	1.94 49	1.70 0.8
2 1/2x1 65x25	300 2065	1.50 38	2	1/2x2 3/4	3.12 79	1.83 46	5.56 141	3.38 86	2.46 62	3.60 1.6
2 1/2x1 1/4 65x32	300 2065	2.00 51	2	1/2x2 3/4	3.12 79	1.83 46	5.56 141	3.38 86	2.44 62	3.60 1.6
2 1/2x1 1/2 65x40	300 2065	2.00 51	2	1/2x2 3/4	3.12 79	1.83 46	5.56 141	3.38 86	2.44 62	3.60 1.6
3x1 80x25	300 2065	1.50 38	2	1/2x2 3/4	3.44 87	2.15 55	6.25 159	3.91 99	2.78 71	3.80 1.7
3x1 1/4 80x32	300 2065	2.00 51	2	1/2x2 3/4	3.44 87	2.15 55	6.25 159	3.91 99	2.76 70	3.80 1.7
3x1 1/2 80x40	300 2065	2.00 51	2	1/2x2 3/4	3.44 87	2.15 55	6.25 159	3.91 99	2.76 70	3.80 1.7
3x2 80x50	300 2065	2.50 64	2	1/2x2 3/4	3.44 87	2.15 55	6.25 159	3.91 99	2.74 70	4.40 2.0
3 1/2x2 90x50	300 2065	2.50 64	2	1/2x2 3/4	3.88 99	2.46 62	6.62 168	3.92 99	3.18 81	4.60 2.1
4x1 100x25	300 2065	1.50 38	2	1/2x2 3/4	4.00 102	2.65 67	7.25 184	3.83 97	3.34 85	4.60 2.1
4x1 1/4 100x32	300 2065	2.00 51	2	1/2x2 3/4	4.00 102	2.65 67	7.25 184	3.83 97	3.32 84	4.60 2.1
4x1 1/2 100x40	300 2065	2.00 51	2	1/2x2 3/4	4.00 102	2.65 67	7.25 184	3.83 97	3.32 84	4.60 2.1
4x2 100x50	300 2065	2.50 64	2	1/2x2 3/4	4.00 102	2.65 67	7.25 184	4.52 115	3.30 84	4.80 2.2
4x2 1/2 100x65	300 2065	2.75 70	2	1/2x2 3/4	4.00 102	2.65 67	7.25 184	4.52 115	3.07 78	5.40 2.4
5x1 1/2 125x40	300 2065	2.00 51	2	5/8x4	4.75 121	3.18 81	8.30 211	3.83 97	4.07 103	6.93 3.1
5x2 125x50	300 2065	2.50 64	2	5/8x4	4.75 121	3.18 81	8.30 211	3.83 97	4.05 103	7.48 3.4
5x2 1/2 125x65	300 2065	2.75 70	2	5/8x4	4.75 121	3.18 81	8.30 211	3.83 97	3.82 97	7.61 3.5
6x1 1/2 150x40	300 2065	2.00 51	2	5/8x4	5.12 130	3.71 94	9.38 238	3.86 98	4.44 113	7.50 3.4
6x2 150x50	300 2065	2.50 64	2	5/8x4	5.12 130	3.71 94	9.38 238	4.42 112	4.42 112	8.00 3.6
6x2 1/2 150x65	300 2065	2.75 70	2	5/8x4	5.12 130	3.71 94	9.38 238	4.42 112	4.19 106	8.00 3.6
8x2 200x50	300 2065	2.50 64	2	3/4x4 1/4	6.25 159	4.83 123	12.32 313	4.48 123	5.55 141	11.60 5.3

All sizes may be used as mechanical crosses.

Threads are NPT per ANSI/ASME B1.20.1

* Contact Star Pipe Products for actual listings on specific pipes



MECHANICAL TEES



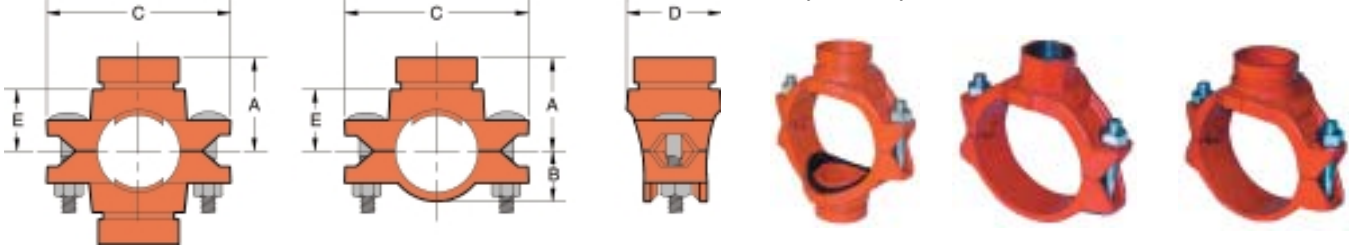
LISTED

LISTED

APPROVED

For fire protection services request submittal GRS 1.3

Mechanical branch connections for reducing branch outlets without welding. The MT-2 is a bolted saddle type fitting with grooved outlets. Design assures superior sealing, full pipe support, excellent stability and easy installation



MT-2 GROOVED MECHANICAL BRANCH TEE

NOMINAL SIZE IN. (mm)	UL or FM MAX. WORKING P.S.I./*(kPa)	HOLE DIA. +.125/-0.0 IN. (mm)	NUTS/BOLTS (INCH) QTY. SIZE	DIMENSIONS -Inch/mm				APPROX. WEIGHT EACH Lbs.(Kg)
				A	B	C	D	
3 O.D.x1 1/4 76, 1x32	300 2065	2.00 51	2 1/2x2 3/4	3.18 81	1.89 48	5.69 145	3.38 86	3.60 1.6
3 O.D.x1 1/2 76, 1x40	300 2065	2.00 51	2 1/2x2 3/4	3.18 81	1.89 48	5.69 145	3.38 86	3.60 1.6
3x1 1/2 80x40	300 2065	2.00 51	2 1/2x2 3/4	3.44 87	2.15 55	6.25 159	3.91 99	3.80 2.8
3x2 80x50	300 2065	2.50 64	2 1/2x2 3/4	3.44 87	2.15 55	6.25 159	3.91 99	4.40 2.0
4x1 1/2 100x40	300 2065	2.00 51	2 1/2x2 3/4	4.00 102	2.64 67	7.25 184	3.83 97	4.60 2.1
4x2 100x50	300 2065	2.50 64	2 1/2x2 3/4	4.00 102	2.65 67	7.25 184	4.52 115	4.80 2.2
4x2 1/2 100x65	300 2065	2.75 70	2 1/2x2 3/4	4.00 102	2.65 67	7.25 184	4.52 115	5.40 2.4
4x3 O.D. 100x76, 1	300 2065	2.75 70	2 1/2x2 3/4	4.00 102	2.65 67	7.25 184	4.52 115	7.60 3.4
4x3 100x80	300 2065	3.50 89	2 1/2x3 1/4	4.13 105	2.65 67	7.25 184	5.12 130	7.60 3.4
5x2 125x50	300 2065	2.50 64	2 5/8x4	4.75 121	3.18 81	8.30 211	4.52 115	7.19 3.3
5x2 1/2 125x65	300 2065	2.75 70	2 5/8x4	4.75 121	3.18 81	8.30 211	4.52 115	7.19 3.3
5x3 125x80	300 2065	3.50 89	2 5/8x4	5.00 127	3.18 81	8.30 211	5.12 130	7.90 3.6
6x1 1/2 150x40	300 2065	2.00 51	2 5/8x4	5.12 130	3.71 94	9.38 238	3.86 98	7.50 3.4
6x2 150x50	300 2065	2.50 64	2 5/8x4	5.12 130	3.71 94	9.38 238	4.42 112	8.00 3.6
6x2 1/2 150x65	300 2065	2.75 70	2 5/8x4	5.12 130	3.71 94	9.38 238	4.42 112	8.00 3.6
6x3 O.D. 150x76, 1	300 2065	2.75 70	2 5/8x4	5.12 130	3.71 94	9.38 238	4.42 112	9.70 4.4
6x3 150x80	300 2065	3.50 89	2 5/8x4	5.25 133	3.71 94	9.38 238	5.62 143	9.70 4.4
6x4 150x100	300 2065	4.50 114	2 5/8x4	5.38 137	3.71 94	9.38 238	6.50 165	13.60 6.2
6.5 O.D.x1 1/2 165, 1x40	300 2065	2.00 51	2 5/8x4	5.12 130	3.65 93	9.25 235	3.86 98	7.50 3.4
6.5 O.D.x2 165, 1x50	300 2065	2.50 64	2 5/8x4	5.12 130	3.65 93	9.25 235	4.42 112	8.00 3.6
6.5 O.D.x3 O.D. 165, 1x76, 1	300 2065	2.75 70	2 5/8x4	5.12 130	3.65 93	9.25 235	4.42 112	8.00 3.6
6.5 O.D.x3 165, 1x80	300 2065	3.50 89	2 5/8x4	5.25 133	3.65 93	9.25 235	5.62 143	9.70 4.4
6.5 O.D.x4 165, 1x100	300 2065	4.50 114	2 5/8x4	5.38 137	3.65 93	9.38 238	6.50 165	13.60 6.2
8x2 1/2 200x65	300 2065	2.75 70	3/4x4 1/4	6.25 159	4.83 123	12.32 313	4.48 114	11.60 5.3
8x3 200x80	300 2065	3.50 89	2 3/4x4 1/4	6.50 165	4.83 123	12.32 313	5.68 144	12.60 5.7
8x4 200x100	300 2065	4.50 114	2 3/4x4 1/4	6.38 162	4.83 123	12.32 313	6.59 167	15.30 6.9

All sizes may be used as mechanical crosses.

Outlet branch is machined per standard cut groove specification

* Contact Star Pipe Products for actual listings on specific pipes



MECHANICAL TEES



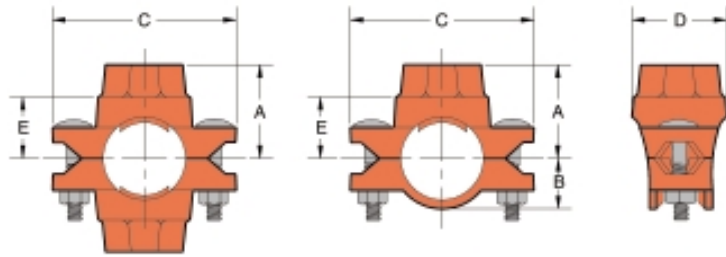
LISTED

LISTED

APPROVED

For fire protection services request submittal GRS 1.3

Mechanical branch connections for reducing branch outlets without welding. The MT-8 is a bolted saddle type fitting with BSP female threaded outlets. Design assures superior sealing, full pipe support, excellent stability and easy installation.



MT-8 BSP THREADED MECHANICAL BRANCH TEE

NOMINAL SIZE IN. (mm)	UL or FM MAX. WORKING P.S.I./* (kPa)	HOLE DIA. +.125/-0.0 IN. (mm)	NUTS/BOLTS (INCH) QTY. SIZE	DIMENSIONS -Inch/mm					APPROX. WEIGHT EACH Lbs. (Kg)
				A	B	C	D	E	
2x1 50x25	300 2065	1.50 38	2 3/8x2	2.62 67	1.58 40	4.62 117	2.47 63	1.96 50	1.70 2.8
2x1 1/4 50x32	300 2065	1.75 44	2 3/8x2	2.62 67	1.58 40	4.62 117	2.47 63	1.94 49	1.70 0.8
2x1 1/2 50x40	300 2065	1.75 44	2 3/8x2	2.62 67	1.58 40	4.62 117	2.86 73	1.94 49	1.70 0.8
3 O.D.x1 76, 1x25	300 2065	1.50 38	2 1/2x2 3/4	3.18 81	1.89 48	5.69 145	3.38 86	2.46 62	3.60 1.6
3 O.D.x1 1/4 76, 1x32	300 2065	2.00 51	2 1/2x2 3/4	3.18 81	1.89 48	5.69 145	3.38 86	2.44 62	3.60 1.6
3 O.D.x1 1/2 76, 1x40	300 2065	2.00 51	2 1/2x2 3/4	3.18 81	1.89 48	5.69 145	3.38 86	2.44 62	3.60 1.6
3x1 80x25	300 2065	1.50 38	2 1/2x2 3/4	3.44 87	2.15 55	6.25 159	3.91 99	2.78 71	3.80 1.7
3x1 1/4 80x32	300 2065	2.00 51	2 1/2x2 3/4	3.44 87	2.15 55	6.25 159	3.91 99	2.76 70	3.80 1.7
3x1 1/2 80x40	300 2065	2.00 51	2 1/2x2 3/4	3.44 87	2.15 55	6.25 159	3.91 99	2.76 70	3.80 1.7
3x2 80x50	300 2065	2.50 64	2 1/2x2 3/4	3.44 87	2.15 55	6.25 159	3.91 99	2.74 70	4.40 2.0
4x1 100x25	300 2065	1.50 38	2 1/2x2 3/4	4.00 102	2.65 67	7.25 184	3.83 97	3.34 85	4.60 2.1
4x1 1/4 100x32	300 2065	2.00 51	2 1/2x2 3/4	4.00 102	2.65 67	7.25 184	3.83 97	3.32 84	4.60 2.1
4x1 1/2 100x40	300 2065	2.00 51	2 1/2x2 3/4	4.00 102	2.65 67	7.25 184	3.83 97	3.32 84	4.60 2.1
4x2 100x50	300 2065	2.50 64	2 1/2x2 3/4	4.00 102	2.65 67	7.25 184	4.52 115	3.30 84	4.80 2.2
4x3 O.D. 100x76, 1	300 2065	2.75 70	2 1/2x2 3/4	4.00 102	2.65 67	7.25 184	4.52 115	3.07 78	5.40 2.4
6 O.D.x 1 1/2 165, 1x40	300 2065	2.00 51	2 5/8x4	5.06 129	3.65 93	9.25 235	3.86 98	4.32 110	7.50 3.4
6 O.D.x 2 165, 1x50	300 2065	2.50 64	2 5/8x4	5.06 129	3.65 93	9.25 235	4.42 112	4.32 110	8.00 3.6
6 O.D.x3 O.D. 165, 1x76, 1	300 2065	2.75 70	2 5/8x4	5.12 130	3.65 93	9.25 235	4.42 112	4.19 106	8.00 3.6

All Sizes may be used as mechanical crosses.

Threads are British standard paralled jointing per BS 21.

* Contact Star Pipe Products for actual listings on specific pipes