

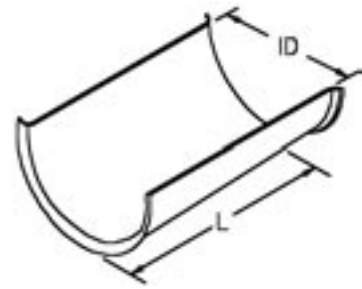
Pipe Supports, Guides, Shields, and Saddles

Model #121 High Density Insulation Shield

APPLICATION: Use with high density (hard) pipe covering or where hard block at the point of support are specified.

NOTE: Shield size directly corresponds to hanger size into which it will nest.

Available with EG finish by special order



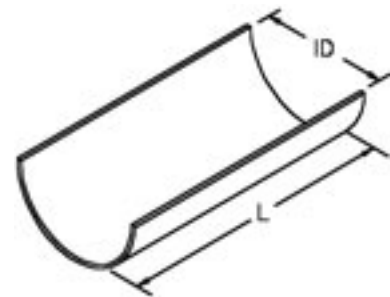
Part No.	Shield Size	ID	L	Gauge	Finish*
1210150PL	1-1/2	2-1/8	3	19	PL
1210200PL	2	2-1/2	3	19	PL
1210250PL	2-1/2	3	4	19	PL
1210300PL	3	3-5/8	4	19	PL
1210350PL	3-1/2	4-1/8	4	19	PL

Part No.	Shield Size	ID	L	Gauge	Finish*
1210400PL	4	4-5/8	6	19	PL
1210500PL	5	5-5/8	6	19	PL
1210600PL	6	6-3/4	6	19	PL
1210800PL	8	8-3/4	6	19	PL
1211000PL	10	10-3/4	6	19	PL

Model #125 Low Compression Insulation Shield

APPLICATION: To resist crushing insulation the point of support when the insulation has more than 5% deformation at 30 p.s.i.

NOTE: Shield size directly corresponds to hanger size into which it will nest.



Part No.	Shield Size	ID	L	Gauge	Finish*
1250150EG	1-1/2	2-1/8	12	18	EG
1250200EG	2	2-1/2	12	18	EG
1250250EG	2-1/2	3	12	18	EG
1250300EG	3	3-5/8	12	18	EG
1250350EG	3-1/2	4-1/8	12	18	EG
1250400EG	4	4-5/8	12	16	EG
1250450EG	4-1/2	5-1/8	12	16	EG
1250500EG	5	5-5/8	12	16	EG
1250600EG	6	6-3/4	12	16	EG
1250700EG	7	7-3/4	12	16	EG
1250701EG	7A	7-3/4	18	14	EG
1250800EG	8	8-3/4	12	14	EG
1250801EG	8A	8-3/4	18	14	EG
1250900EG	9	9-3/4	18	14	EG

Part No.	Shield Size	ID	L	Gauge	Finish*
1251000EG	10	10-3/4	18	14	EG
1251100EG	11	11-3/4	24	14	EG
1251200EG	12	12-3/4	24	14	EG
1251400EG	14	14	24	14	EG
1251500EG	15	15	24	14	EG
1251600EG	16	16	24	12	EG
1251700EG	17	17	24	12	EG
1251800EG	18	18	24	12	EG
1251900EG	19	19	24	12	EG
1252000EG	20	20	24	12	EG
1252200EG	22	22	24	12	EG
1252400EG	24	24	24	12	EG
1252800EG	28	28	28	12	EG

Conforms With: Federal Specification WW-H-171 (Type 41), Manufacturers Standardization Society ANSI/MSS-SP-58 (Type 40); install in accordance with ANSI/MSS-SP-69.

See Models 126 and 127 for pre-insulated pipe support systems.

All dimensions are in inches unless otherwise noted.

*See page 2 for finish and material descriptions. All material is Carbon Steel unless otherwise noted.

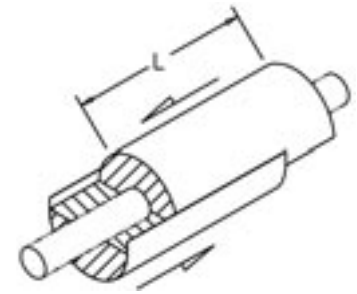
Pipe Supports, Guides, Shields, and Saddles

Model #126

360° Shield and Insulation - Hot Piping

Model #127

360° Shield and Insulation - Cold Piping



SIZE RANGE: 1/2" thru 18" pipe; 1" thru 4" insulation thickness

MATERIAL: Hydrous calcium silicate, treated for water resistance, asbestos free, two pieces, 360° pre-galvanized metal jacket; 140 psi minimum compressive strength; -20° to 1200°F working temperature. Detailed insulation specifications available on request.

APPLICATION: To prevent crushed insulation at the point of support
Use with hot or cold services.

PHYSICAL CONSTRUCTION:

#126: 360°, 2 piece pre-galvanized metal jacket encasing asbestos free, hydrous calcium silicate, treated for water resistance. Insulation is affixed inside top and bottom halves of metal jacket. Bottom jacket over-laps top and is assembled by sliding together.

#127: Same as #126, but insulation has vapor barrier and extends 1" beyond metal jacket so joint may be taped to make complete vapor barrier between insert and line insulation.

ORDERING: Specify pipe or tubing size, insulation thickness, model number and name.

Pipe or Tubing Size	"L" Insulation Thickness					
	1	1-1/2	2	2-1/2	3	4
1/2 thru 1-1/2	4**	4**	4**	4**	6	6
2	6	6	6	6	6	6
2-1/2 thru 6	6	6	6	6	9	9
8 thru 10	9	9	9	9	9	9
12 thru 18	12	12	12	12	12	12

**Cold water inserts have a minimum insulation length of 6"

Pipe or Tubing Size	Sheet Metal Gauge Insulation Thickness**					
	1	1-1/2	2	2-1/2	3	4
1/2 thru 1-1/2	24	24	24	20	20	20
2	20	20	20	20	20	20
2-1/2 thru 5	20	20	20	20	20	20
6	20	20	20	18	18	18
8 thru 18	16	16	16	16	16	16

** A double thickness of sheet metal is recommended on the lower half when used with rollers or when hanger span exceeds 10'.

CONTACT ERICO FOR ORDERING INFORMATION.

All dimensions are in inches unless otherwise noted.

*See page 2 for finish and material descriptions. All material is Carbon Steel unless otherwise noted.



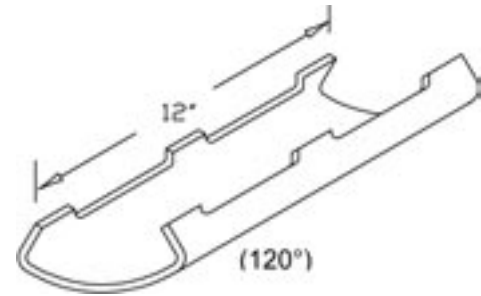
Pipe Supports, Guides, Shields, and Saddles

Model #630 Protection Saddle for 1" Pipe Insulation

APPLICATION: Designed for high temperature service or where heat losses are to be kept at a minimum and to protect insulation against damage at the point of support.

NOTE: Larger sizes available upon request.

Finish*: PL



Part No.	Pipe Size	Actual Thickness of Cover	Size of Pipe Roll for Model #			Center Line of Pipe to Outside of Saddle	Center Line of Pipe to Center Line of Roll for Model #			Max. Recom. Load (lbs)**
			600, 605 615, 620	610 612	617 619		600, 605 615, 620	610 612	617 619	
6300150PL	3/4	7/8	2-1/2	2-1/2	2 to 3-1/2	1-3/4	2-3/16	2-1/4	2-3/8	1200
	1	1-1/16	2-1/2	3	2 to 3-1/2	1-15/16	2-7/16	2-3/8	3	1200
	1-1/4	7/8	2-1/2	3	2 to 3-1/2	2-1/8	2-11/16	2-5/8	2-3/4	1200
	1-1/2	1	3	3-1/2	2 to 3-1/2	2-1/4	2-3/4	2-3/4	2-3/4	1200
6300350PL	2	1-1/16	3-1/2	4	2 to 3-1/2	2-7/16	3-1/16	3	3	1200
	2-1/2	1-1/16	3-1/2	5	2 to 3-1/2	2-3/4	3-5/16	3-5/16	3-3/8	1200
	3	1	4	5	2 to 3-1/2	3-1/16	3-5/8	3-5/8	3-11/16	1200
	3-1/2	1-1/4	5	6	4 to 6	3-3/8	4-1/16	4-1/16	4	1200
6300500PL	4	1-1/16	5	6	4 to 6	3-7/16	4-1/8	4-1/8	4-1/16	1800
	5	1	6	8	4 to 6	4-1/16	4-3/4	4-3/4	4-11/16	1800
6300600PL	6	1	8	8	4 to 6	4-9/16	5-3/8	5-3/8	5-1/4	1800
6300800PL	8	1-1/2	10	12	8 to 10	6	7-1/16	7-1/16	7-1/16	1800

**Maximum recommended loads are applicable only when the saddle is used on a flat bearing surface and tack welded to the pipe. When a saddle is used with a pipe roll, the maximum load given for the pipe roll applies to the saddle.

Conforms With: Federal Specification **WW-H-171** (Type 40A or 40B), Manufacturers Standardization Society **ANSI/MSS-SP-58** (Type 39A or 39B); install in accordance with **ANSI/MSS-SP-69**.

Pipe Supports, Guides, Shields, and Saddles

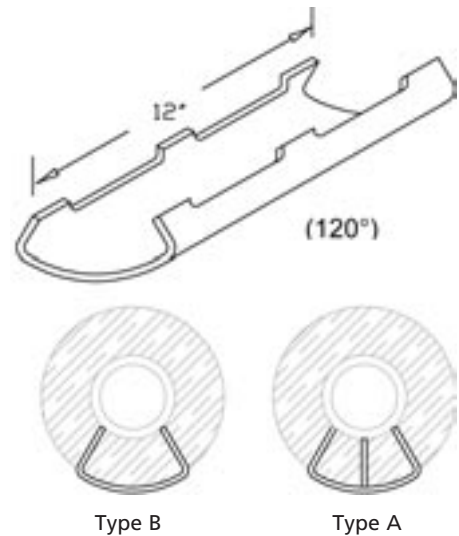
Model #631

Protection Saddle for 1-1/2" Pipe Insulation

APPLICATION: Designed for high temperature service or where heat losses are to be kept at a minimum and to protect insulation against damage at the point of support.

NOTE: Larger sizes available upon request. Saddles have a welded-in center plate for pipe sizes 12" and larger. (See Type A).

Finish*: PL



Part No.	Pipe Size	Actual Thickness of Cover	Size of Pipe Roll for Model #			Center Line of Pipe to Outside of Saddle	Center Line of Pipe to Center Line of Roll for Model #			Max. Recom. Load (lbs)**
			600, 605 615, 620	610 612	617 619		600, 605 615, 620	610 612	617 619	
6310150PL	3/4	1-7/16	3	3-1/2	2 to 3-1/2	2-1/8	2-11/16	2-11/16	3-13/16	1200
	1	1-9/16	3	4	2 to 3-1/2	2-7/16	3	3	3-1/8	1200
	1-1/4	1-5/8	3-1/2	5	2 to 3-1/2	2-9/16	3-1/16	3-1/16	3-3/16	1200
	1-1/2	1-1/2	3-1/2	2	2 to 3-1/2	2-11/16	3-5/16	3-5/16	3-5/16	1200
6310350PL	2	1-9/16	4	5	2 to 3-1/2	3	3-5/8	3-5/8	3-5/8	1200
	2-1/2	1-7/16	5	6	2 to 3-1/2	3-1/4	3-15/16	3-15/16	3-7/8	1200
	3	1-9/16	5	6	2 to 3-1/2	3-5/8	4-5/16	4-5/16	4-1/4	1800
	3-1/2	1-13/16	6	8	4 to 6	3-7/8	4-3/4	4-3/4	4-11/16	1800
6310500PL	4	1-9/16	6	8	4 to 6	3-7/8	4-11/16	4-11/16	4-9/16	1800
	5	1-1/2	8	8	4 to 6	4-1/2	5-5/16	5-5/16	5-3/16	1800
6310800PL	6	1-1/2	8	10	8 to 10	5-3/16	6	5-13/16	6-1/8	1800
	8	1-1/2	10	12	8 to 10	6-5/16	7-3/8	7-3/8	7-3/8	1800
6311000PL	10	1-9/16	12	14	8 to 10	7-1/4	8-5/16	8-1/2	8-5/16	1800
6311200PL	12	1-1/2	14	16	12 to 14	8-1/16	8-1/16	9-1/2	9-1/4	5000
6311400PL	14	1-1/2	16	18	12 to 14	8-7/8	8-7/8	10-1/4	10-3/16	5000
6311600PL	16	1-1/2	18	20	16 to 20	9-7/8	11-5/16	11-5/16	11-3/16	5000
6311800PL	18	1-1/2	20	N/A	16 to 20	10-7/8	12-3/8	N/A	12-1/4	5000
6312000PL	20	1-1/2	24	N/A	26 to 24	11-3/4	13-11/16	N/A	13-3/16	7200
6312400PL	24	1-1/2	30	N/A	22 to 30	13-5/8	16-7/16	N/A	15-3/8	7200

**Maximum recommended loads are applicable only when the saddle is used on a flat bearing surface and tack welded to the pipe. When a saddle is used with a pipe roll, the maximum load given for the pipe roll applies to the saddle.

Conforms with: Federal Specification **WW-H-171** (Type 40A or 40B) Manufacturers Standardization Society **ANSI/MSS-SP-58** (Type 39A or 30B); install in accordance with **ANSI/MSS-SP-69**.

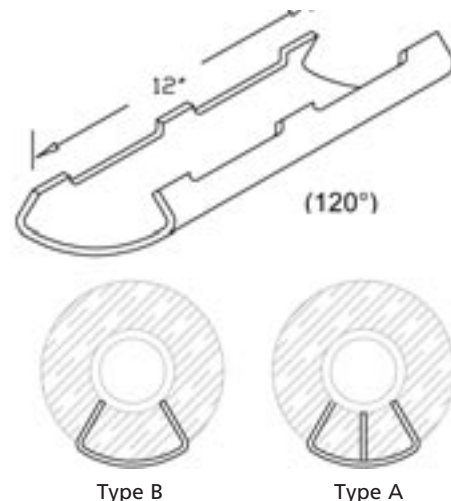


Pipe Supports, Guides, Shields, and Saddles

Model #632 Protection Saddle for 2" Pipe Insulation

APPLICATION: Designed for high temperature service or where heat losses are to be kept at a minimum and to protect insulation against damage at the point of support.

NOTE: Larger sizes available upon request. Saddles have a welded-in center plate for pipe sizes 12" and larger. (See Type A) **Finish*:** PL



Part No.	Pipe Size	Actual Thickness of Cover	Size of Pipe Roll for Model #			Center Line of Pipe to Outside of Saddle	Center Line of Pipe to Center Line of Roll for Model #			Max. Recom. Load (lbs)**
			600, 605 615, 620 621	610 612	617 619		600, 605 615, 620 621	610 612	617 619	
6320150PL	3/4	1-7/8	4	5	2 to 3-1/2	2-3/4	3-3/8	3-3/8	3-7/16	1200
	1	2-1/8	4	5	2 to 3-1/2	2-15/16	3-9/16	3-9/16	3-9/16	1200
	1-1/4	1-15/16	4	5	2 to 3-1/2	3-1/8	3-3/4	3-3/4	3-13/16	1200
	1-1/2	2-5/16	5	3	4 to 6	3-1/4	4-1/8	4-1/8	4-1/8	1800
6320350PL	2	2-1/8	5	6	4 to 6	3-1/2	4-3/16	4-3/16	4-3/16	1800
	2-1/2	2-5/16	6	8	4 to 6	3-3/4	4-3/8	4-1/2	4-3/8	1800
	3	2-1/16	6	8	4 to 6	4-1/8	4-13/16	4-13/16	4-11/16	1800
	3-1/2	2-1/4	6	8	4 to 6	4-3/8	5-3/16	5-3/16	5-1/16	1800
6320500PL	4	2-1/16	8	8	4 to 6	4-11/16	5-1/2	5-1/2	5-3/8	1800
	5	2	8	10	8 to 10	4-15/16	5-3/4	5-13/16	5-7/8	1800
6320800PL	6	2	10	10	8 to 10	5-11/16	6-5/8	6-5/8	6-11/16	1800
	8	2	10	12	8 to 10	6-13/16	7-7/8	7-7/8	7-7/8	1800
6321000PL	10	2-1/16	14	16	12 to 14	7-5/8	9-1/16	9	8-13/16	1800
6321200PL	12	2-1/16	16	18	16 to 20	8-13/16	8-3/16	10-1/4	10-3/16	5000
6321400PL	14	2	16	18	16 to 20	9-1/4	9-1/4	10-13/4	10-5/8	5000
6321600PL	16	2	18	20	16 to 20	10-1/4	11-13/16	11-13/16	11-5/8	5000
6321800PL	18	2	20	N/A	22 to 24	11-1/2	13-1/16	N/A	12-7/8	7200
6322000PL	20	2	24	N/A	22 to 24	12-5/16	14-3/16	N/A	13-11/16	7200
6322400PL	24	2	30	N/A	26 to 30	14-3/16	17-1/16	N/A	15-15/16	7200

**Maximum recommended loads are applicable only when the saddle is used on a flat bearing surface and tack welded to the pipe. When a saddle is used with a pipe roll, the maximum load given for the pipe roll applies to the saddle.

Conforms With: Federal Specification **WW-H-171** (Type 40A or 40B), Manufacturers Standardization Society **ANSI/MSS-SP-58** (Type 39A or 39B); install in accordance with **ANSI/MSS-SP-69**.

All dimensions are in inches unless otherwise noted.

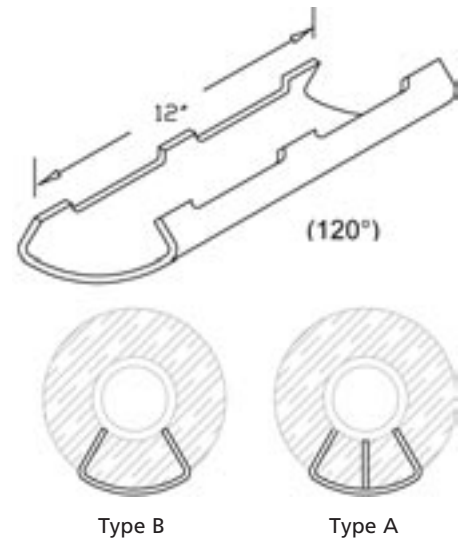
*See page 2 for finish and material descriptions. All material is Carbon Steel unless otherwise noted.

Pipe Supports, Guides, Shields, and Saddles

Model #633 Protection Saddle for 2-1/2" Pipe Insulation

APPLICATION: Designed for high temperature service or where heat losses are to be kept at a minimum and to protect insulation against damage at the point of support.

NOTE: Larger sizes available upon request. Saddles have a welded-in center plate for pipe sizes 12" and larger. (See Type A)
Finish*: PL



Part No.	Pipe Size	Actual Thickness of Cover	Size of Pipe Roll for Model #			Center Line of Pipe to Outside of Saddle	Center Line of Pipe to Center Line of Roll for Model #			Max. Recom. Load (lbs)**
			600, 605 615, 620 621	610 612	617 619		600, 605 615, 620 621	610 612	617 619	
6330150PL	1-1/4	2-7/16	5	6	4 to 6	3-3/4	4-3/8	4-3/8	4-3/8	1200
	1-1/2	2-13/16	6	5	4 to 6	3-13/16	4-7/16	4-7/16	4-9/16	1800
6330200PL	2	2-5/8	6	8	4 to 6	4-15/16	4-5/8	4-11/16	4-11/16	1800
6330250PL	2-1/2	2-7/8	8	8	4 to 6	4-7/16	5-5/16	5-5/16	5-3/16	1800
6330300PL	3	2-9/16	8	8	4 to 6	4-11/16	5-7/16	5-7/16	5-5/16	1800
6330350PL	3-1/2	2-3/4	8	10	8 to 10	4-13/16	5-3/4	5-3/4	5-13/16	1800
6330500PL	4	2-9/16	8	10	8 to 10	5-1/8	6-1/16	6-1/16	6-3/4	1800
	5	2	10	10	8 to 10	5-9/16	6-1/2	6-1/2	6-9/16	1800
6330800PL	6	2-1/2	10	12	8 to 10	6-3/16	7-1/8	7-13/16	7-1/4	1800
	8	2-11/16	12	14	8 to 10	7-5/16	8-3/8	8-9/16	8-3/8	1800
6331000PL	10	2-9/16	14	16	12 to 14	8-3/16	9-5/8	9-5/8	9-3/8	1800
6331200PL	12	2-5/8	16	18	16 to 20	9-1/8	9-1/8	10-9/16	10-1/2	5000
6331400PL	14	2-1/2	18	20	16 to 20	9-3/4	9-3/4	11-1/4	10-13/16	5000
6331600PL	16	2-1/2	20	N/A	16 to 20	10-7/8	12-3/8	N/A	12-7/8	7200
6331800PL	18	2-1/2	24	N/A	22 to 24	12	13-15/16	N/A	13-7/16	7200
6332000PL	20	2-1/2	24	N/A	22 to 24	12-7/8	14-13/16	N/A	14-5/16	7200
6332400PL	24	2-1/2	30	N/A	26 to 30	14-3/4	17-5/8	N/A	16-9/16	7200

**Maximum recommended loads are applicable only when the saddle is used on a flat bearing surface and tack welded to the pipe. When a saddle is used with a pipe roll, the maximum load given for the pipe roll applies to the saddle.

Conforms With: Federal Specification **WW-H-171** (Type 40A or 40B), Manufacturers Standardization Society **ANSI/MSS-SP-58** (Type 39A or 39B); install in accordance with **ANSI/MSS-SP-69**.



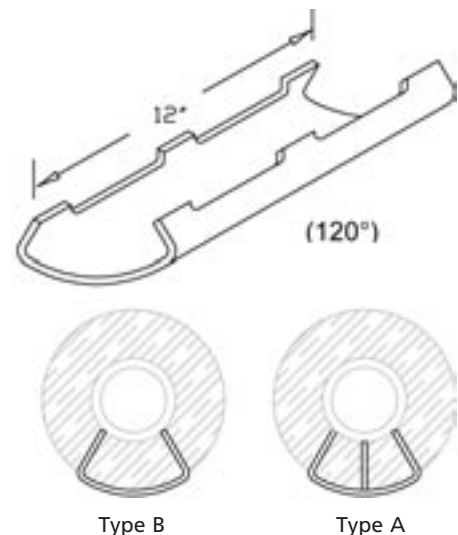
Pipe Supports, Guides, Shields, and Saddles

Model #634 Protection Saddle for 3" Pipe Insulation

APPLICATION: Designed for high temperature service or where heat losses are to be kept at a minimum and to protect insulation against damage at the point of support.

NOTE: Larger sizes available upon request. Saddles have a welded-in center plate for pipe sizes 12" and larger. (See Type A)

Finish*: PL



Part No.	Pipe Size	Actual Thickness of Cover	Size of Pipe Roll for Model #			Center Line of Pipe to Outside of Saddle	Center Line of Pipe to Center Line of Roll for Model #			Max. Recom. Load (lbs)**
			600, 605 615, 620 621	610 612	617 619		600, 605 615, 620 621	610 612	617 619	
6340200PL	2	3-1/8	8	8	4 to 6	4-11/16	5-1/2	5-1/2	5-1/2	1800
6340250PL	2-1/2	3-3/8	8	10	4 to 6	4-15/16	5-11/16	5-13/16	5-9/16	1800
6340300PL	3	3-1/16	8	10	8 to 10	5	5/15/16	5-15/16	6	1800
6340350PL	3-1/2	3-5/16	10	10	8 to 10	5-1-2	6-7/16	6-7/16	6-1/2	1800
6340500PL	4	3-1/16	10	10	8 to 10	5-9/16	6-1/2	6-1/2	7-1/2	1800
	5	3-1/16	10	12	8 to 10	6-1/8	7-1/16	7-3/16	7-3/16	1800
6340800PL	6	3	12	12	8 to 10	6-9/16	7-5/8	7-5/8	7-5/8	1800
	8	3-1/8	14	16	12 to 14	7-5/8	8-15/16	8-15/16	8-11/16	1800
6341000PL	10	3-1/16	16	18	16 to 20	8-7/8	10-5/16	10-7/8	10-3/16	1800
6341200PL	12	3-1/16	18	20	16 to 20	9-11/16	9-11/16	11-3/16	11-1/16	5000
6341400PL	14	3	18	20	16 to 20	10-1/4	10-1/4	11-11/16	11-1/8	5000
6341600PL	16	3	24	N/A	22 to 24	11-3/16	13	N/A	12-9/16	7200
6341800PL	18	3	24	N/A	22 to 24	12-5/16	14-1/4	N/A	13-11/16	7200
6342000PL	20	3	24	N/A	22 to 24	13-1/2	15-7/16	N/A	14-15/16	7200
6342400PL	24	3	30	N/A	26 to 30	15-3/8	18-3/16	N/A	17-1/8	7200

**Maximum recommended loads are applicable only when the saddle is used on a flat bearing surface and tack welded to the pipe. When a saddle is used with a pipe roll, the maximum load given for the pipe roll applies to the saddle.

Conforms With: Federal Specification **WW-H-171** (Type 40A or 40B), Manufacturers Standardization Society **ANSI/MSS-SP-58** (Type 39A or 39B); install in accordance with **ANSI/MSS-SP-69**.

All dimensions are in inches unless otherwise noted.

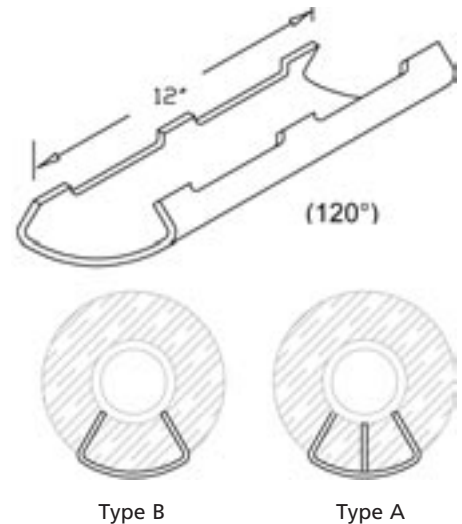
*See page 2 for finish and material descriptions. All material is Carbon Steel unless otherwise noted.

Pipe Supports, Guides, Shields, and Saddles

Model #635 Protection Saddle for 4" Pipe Insulation

APPLICATION: Designed for high temperature service or where heat losses are to be kept at a minimum and to protect insulation against damage at the point of support.

NOTE: Larger sizes available upon request. Saddles have a welded-in center plate for pipe sizes 12" and larger. (See Type A)
Finish*: PL



Part No.	Pipe Size	Actual Thickness of Cover	Size of Pipe Roll for Model #			Center Line of Pipe to Outside of Saddle	Center Line of Pipe to Center Line of Roll for Model #			Max. Recom. Load (lbs)**
			600, 605 615, 620 621	610 612	617 619		600, 605 615, 620 621	610 612	617 619	
6350400PL	4	4-1/16	10	12	8 to 10	6-9/16	7-11/16	7-11/16	7-5/8	1800
6350500PL	5	4-3/16	12	14	8 to 10	7-3/16	8-1/4	8-7/16	8-1/4	1800
6350800PL	6	4-1/8	14	16	12 to 14	7-5/8	9-1/16	9-1/16	8-13/16	1800
	8	4-1/8	16	18	12 to 14	8-11/16	10-1/8	10-1/8	9-7/8	1800
6351000PL	10	4-1/16	18	20	16 to 20	9-11/16	11-3/16	11-3/16	11-1/16	1800
6351200PL	12	4-1/8	20	N/A	16 to 20	10-13/16	13	N/A	12-13/16	5000
6351600PL	16	4	24	N/A	22 to 24	12-5/16	14-1/4	N/A	13-3/4	7200
6351800PL	18	4	24	N/A	22 to 24	13-1/2	15-7/16	N/A	14-15/16	7200
6352000PL	20	4	30	N/A	26 to 30	14-3/16	17-1/16	N/A	15-15/16	7200
6352400PL	24	4	30	N/A	26 to 30	16-9/16	19-3/8	N/A	18-5/16	7200

**Maximum recommended loads are applicable only when the saddle is used on a flat bearing surface and tack welded to the pipe. When a saddle is used with a pipe roll, the maximum load given for the pipe roll applies to the saddle.

Conforms With: Federal Specification **WW-H-171** (Type 40A or 40B), Manufacturers Standardization Society **ANSI/MSS-SP-58** (Type 39A or 39B); install in accordance with **ANSI/MSS-SP-69**.



Pipe Supports, Guides, Shields, and Saddles

Model #650 Pipe Alignment Guide

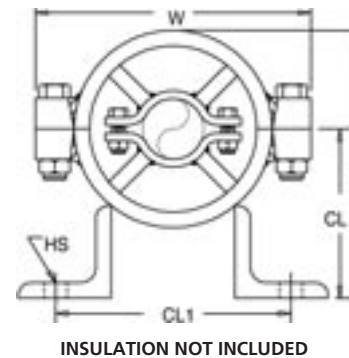
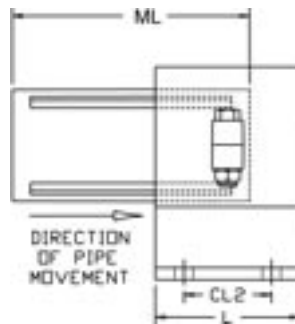
APPLICATION: Maintaining pipe alignment during longitudinal expansion/contraction cycles of hot systems.

NOTE: Available with HD finish by special order.

NOTE: When ordering, must specify:

1. Pipe Size
2. Insulation Thickness

NOTE: Pipe alignment guides are not designed to be load bearing.



Part No.	Guide Size	H	CL	CL1	W	HS	CL2	L	Finish*
6500100PT	1	5-7/8	3-1/2	4-1/8	6-1/8	5/8	1-3/4	3	PT
6500200PT	2	6-3/4	4	4-3/8	7-1/8	5/8	1-3/4	3	PT
6500300PT	3	7-5/8	4-3/8	5-1/8	8-1/8	5/8	1-3/4	3	PT
6500400PT	4	9-1/4	5-1/4	6-1/8	10-1/8	5/8	1-3/4	3	PT
6500500PT	5	11-5/8	6-1/4	7	12-1/8	5/8	2-3/4	4	PT
6500600PT	6	13-3/8	7	8-1/4	14-1/8	5/8	2-3/4	4	PT
6500700PT	7	15-1/8	7-7/8	9-7/8	16-1/8	3/4	4	6	PT
6500800PT	8	17	8-7/8	10-7/8	18-1/8	3/4	4	6	PT
6500900PT	9	18-3/4	9-3/4	11-7/8	20-1/8	3/4	4	6	PT
6501000PT	10	21	10-7/8	11-3/4	22-1/8	7/8	6	8	PT
6501100PT	11	23-1/8	12-1/8	14-1/2	24-1/8	7/8	6	8	PT
6501200PT	12	25	13	15-1/2	26-1/8	7/8	6	8	PT
6501300PT	13	27-3/4	14-3/4	17-1/8	28-1/8	1-1/8	6	8	PT
6501400PT	14	31-1/2	16-1/2	19-1/4	32-1/8	1-1/8	6	8	PT

Pipe Size	ML	Insulation Thickness						
		1	1-1/2	2	2-1/2	3	3-1/2	4
1/2	8	1	1	2	3	4	4	5
3/4		1	2	3	4	4	5	5
1		1	2	3	4	4	5	5
1-1/4		1	2	3	4	4	5	5
1-1/2		2	2	3	4	4	5	5
2		2	3	4	4	5	5	6
2-1/2		3	3	4	4	5	5	6
3		3	4	4	5	5	6	6
4		4	4	5	5	6	6	7
5		5	5	5	6	6	7	8
6		5	5	6	6	7	8	8
8		6	6	7	8	8	9	9
10		8	8	8	9	9	10	10
12		9	9	9	10	10	11	12
14		10	10	10	10	11	11	12
16		11	11	11	11	12	12	13
18	12	12	12	12	12	13	13	14
20		13	13	13	13	14	14	14
24**		14	14	14	14	N/A	N/A	N/A

**Max. 2-1/2 in.

NOTE:

1. Use minimum of two guides per run and locate first guide 4 pipe diameters from expansion joint or loop.
2. One half of internal "spider" pipe clamp assembly remains inside guide housing at installation. Protruding portion of clamp assembly must be toward anchored end of pipe or toward direction from which pipe movement will occur.
3. Special guides with longer travels are available upon request.

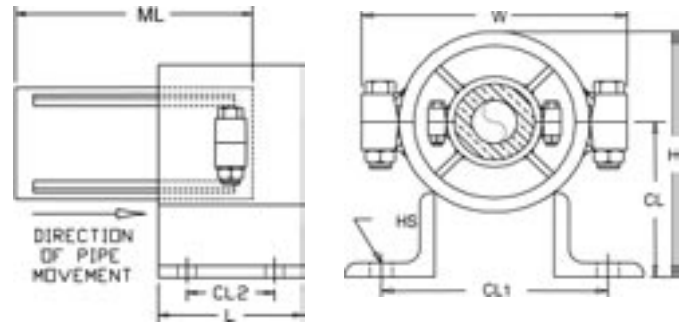
All dimensions are in inches unless otherwise noted.

*See page 2 for finish and material descriptions. All material is Carbon Steel unless otherwise noted.

Pipe Supports, Guides, Shields, and Saddles

Model #651 Pre-Insulated Pipe Alignment Guide

APPLICATION: Maintaining pipe alignment during longitudinal expansion/contraction cycles of vapor barrier covered insulated pipe.



Part No.	Guide Size	H	CL	CL1	W	HS	CL2	L	Finish*
6510100PT	1	7-5/8	4-3/8	5-1/2	8	5/8	1-3/4	3	PT
6510200PT	2	9-1/2	5-1/4	6-1/4	10-3/8	5/8	1-3/4	3	PT
6510300PT	3	11-5/8	6-1/4	7-1/4	12-1/2	5/8	2-3/4	4	PT
6510400PT	4	13-5/8	7-1/4	8-1/4	14-1/2	5/8	2-3/4	4	PT
6510500PT	5	15	8	10	15-3/4	3/4	4	6	PT
6510600PT	6	17	9	11	17-3/4	3/4	4	6	PT
6510700PT	7	18-3/4	9-3/4	12	20-1/8	3/4	4	6	PT
6510800PT	8	21-1/8	11-1/8	13-1/2	22-1/8	3/4	4	6	PT
6510900PT	9	23-1/2	12-1/8	14-1/2	24-1/8	7/8	6	8	PT
6511000PT	10	25	13	15-1/2	26-5/8	7/8	6	8	PT
6511100PT	11	27-3/4	14-3/4	17-1/2	28-5/8	1-1/8	6	8	PT
6511200PT	12	31-1/2	16-1/2	19-1/2	32-5/8	1-1/8	6	8	PT

Pipe Size	ML	Insulation Thickness						
		1	1-1/2	2	2-1/2	3	3-1/2	4
1/2	6"	1	1	2	3	4	4	5
3/4		1	2	3	4	4	5	5
1		1	2	3	4	4	5	5
1-1/4		1	2	3	4	4	5	5
1-1/2		2	2	3	4	4	5	5
2		2	3	4	4	5	5	6
2-1/2		3	3	4	4	5	5	6
3		3	4	4	5	5	6	6
4		4	4	5	5	6	6	7
5		5	5	5	6	6	7	8
6	5	5	6	6	7	8	8	
8	8"	6	6	7	8	8	9	9
10		8	8	8	9	9	10	10
12		9	9	9	10	10	11	12
14		10	10	10	10	11	11	12
16		11	11	11	11	12	12	13
18	12"	12	12	12	12	13	13	14
20		13	13	13	13	14	14	14
24**		14	14	14	14	N/A	N/A	N/A

NOTE:

1. Use minimum of two guides per run and locate first guide 4 pipe diameters from expansion joint or loop.
2. One half of internal "spider" pipe clamp assembly remains inside guide housing at installation. Protruding portion of clamp assembly must be toward anchored end of pipe or toward direction from which pipe movement will occur. Assemble at ambient temperatures.
3. Special guides with longer travels are available upon request.

**Max. 2-1/2 in.

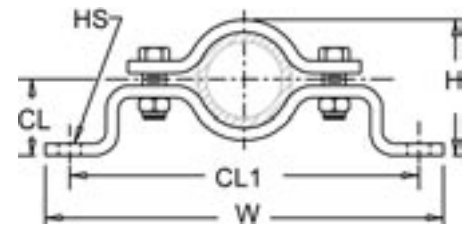


All dimensions are in inches unless otherwise noted.
*See page 2 for finish and material descriptions. All material is Carbon Steel unless otherwise noted.

Pipe Supports, Guides, Shields, and Saddles

Model #700 Offset Pipe Clamp

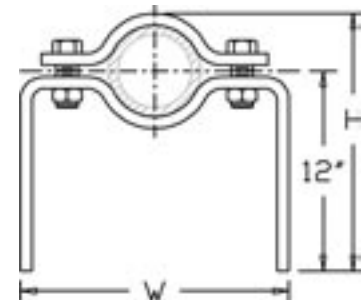
APPLICATION: To support piping away from wall or floor.



Part No.	Pipe Size	H	CL	CL1	W	HS	Max Recom. Load (lbs)	Finish*
7000050PL	1/2	3-3/8	2-3/4	8-1/2	9-3/4	3/8	190	PL
7000075PL	3/4	3-5/16	2-1/2	7-3/16	8-7/16	3/8	200	PL
7000100PL	1	3-9/16	2-5/8	7-9/16	9-1/16	3/8	200	PL
7000125PL	1-1/4	3-15/16	2-13/16	7-7/8	9-3/8	3/8	200	PL
7000150PL	1-1/2	4-1/8	2-15/16	8-1/4	9-3/4	3/8	200	PL
7000200PL	2	4-5/8	3-3/16	9-1/8	10-5/8	3/8	410	PL
7000250PL	2-1/2	5-1/8	3-7/16	10-1/2	11-5/8	3/8	410	PL
7000300PL	3	5-3/4	3-3/4	11-1/8	12-7/8	3/8	410	PL
7000400PL	4	6-3/4	4-1/4	12-1/2	14-1/2	1/2	600	PL
7000500PL	5	7-13/16	4-3/4	13-3/4	15-3/4	1/2	600	PL
7000600PL	6	9	5-5/16	16-1/2	18-1/4	1/2	850	PL
7000800PL	8	11	6-5/16	18-5/8	20-5/8	1/2	850	PL

Model #705 Extended Pipe Clamp

APPLICATION: As offset pipe clamp for field fabrication during installation of pipe, when specific center line distances are unknown, or use by welding legs to the structure.



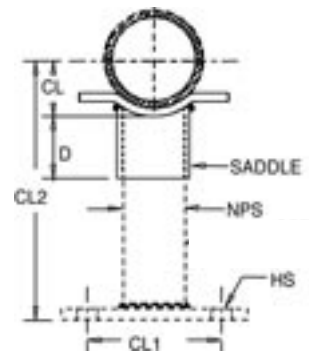
Part No.	Pipe Size	H	W	Finish*
7050050PL	1/2	12-9/16	4-3/16	PL
7050075PL	3/4	12-11/16	4-15/16	PL
7050100PL	1	12-7/8	5-3/16	PL
7050125PL	1-1/4	13	5-1/2	PL
7050150PL	1-1/2	13-1/8	5-3/4	PL
7050200PL	2	13-7/16	6-1/2	PL
7050250PL	2-1/2	13-11/16	7-3/4	PL
7050300PL	3	14	8-3/8	PL
7050350PL	3-1/2	14-1/4	8-7/8	PL
7050400PL	4	14-1/2	9-3/4	PL
7050500PL	5	15	11	PL
7050600PL	6	15-11/16	13-1/4	PL
7050800PL	8	16-1/16	15-3/8	PL

Pipe Supports, Guides, Shields, and Saddles

Model #720 Pipe Saddle Support

APPLICATION: Stanchion type support where vertical adjustment is not needed.

NOTE: Saddle support sits on top of base.
Base not included.



Part No.	Pipe Size	CL	CL1	HS	NPS	D	Finish*
7200250PL	2-1/2	3-3/8	2-3/4	3/8	1-1/2	4	PL
7200300PL	3	3-5/16	2-1/2	3/8	1-1/2	4	PL
7200400PL	4	3-9/16	2-5/8	3/8	1-1/2	4	PL
7200500PL	5	3-15/16	2-13/16	3/8	2-1/2	4	PL
7200600PL	6	4-1/8	2-15/16	3/8	2-1/2	4	PL
7200800PL	8	4-5/8	3-3/16	3/8	2-1/2	4	PL
7201000PL	10	5-1/8	3-7/16	3/8	2-1/2	4	PL
7201200PL	12	5-3/4	3-3/4	3/8	2-1/2	4	PL
7201400PL	14	6-3/4	4-1/4	1/2	3	4	PL
7201600PL	16	7-13/16	4-3/4	1/2	3	4	PL
7201800PL	18	9	5-5/16	1/2	4	4	PL
7202000PL	20	11	6-5/16	1/2	4	4	PL

Conforms With: Federal Specification **WW-H-171** (Type 37, 38), Manufacturers Standardization Society **ANSI/MSS-SP-58** (Type 36, 37); install in accordance with **ANSI/MSS- SP-69**.

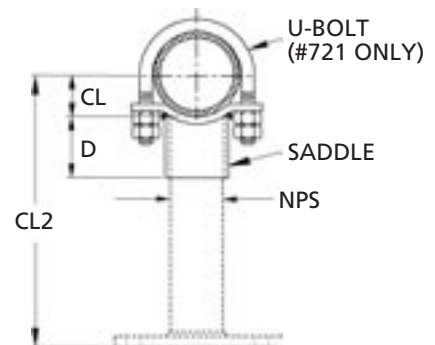


Pipe Supports, Guides, Shields, and Saddles

Model #721 Pipe Saddle Support with U-Bolt

APPLICATION: Stanchion type support where vertical adjustment is not needed. U-bolt provides additional stability.

NOTE: Base not included.



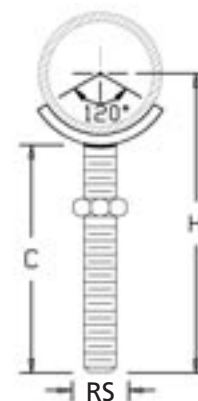
Part No.	Pipe Size	CL	CL1	NPS	D	Finish*
7210250PL	2-1/2	N/A	1-11/16	1	2-1/4	PL
7210300PL	3	N/A	2	2	2-5/16	PL
7210400PL	4	2-11/16	2-5/8	3	2-3/8	PL
7210500PL	5	N/A	3-3/16	3	2-3/8	PL
7210600PL	6	3-7/8	3-11/16	3	2-5/16	PL
7210800PL	8	4-15/16	4-11/16	3	2-11/16	PL
7211000PL	10	5-15/16	5-3/4	3	3	PL
7211200PL	12	7	6-3/4	3	3-7/16	PL
7211400PL	14	8-1/16	7-3/8	4	4	PL
7211600PL	16	9-1/8	8-3/8	4	4-3/8	PL
7211800PL	18	10-1/4	9-1/2	4	4-11/16	PL
7212000PL	20	11-5/16	10-1/2	6	5-1/2	PL
7212400PL	24	13-7/16	12-1/2	6	5-15/16	PL
7212600PL	26	N/A	N/A	6	N/A	PL
7213000PL	30	16-1/2	15-1/2	6	6-1/8	PL
7213200PL	32	N/A	N/A	6	6-3/8	PL
7213600PL	36	19-11/16	18-1/2	6	6-5/16	PL

Conforms With: Federal Specification **WW-H-171** (Type 37, 38), Manufacturers Standardization Society **ANSI/MSS-SP-58** (Type 36, 37); install in accordance with **ANSI/MSS-SP-69**.

Model #722 Adjustable Pipe Support

APPLICATION: All-thread welded to the pipe saddle. A heavy hex nut allows for vertical adjustment in the pipe stanchion.

Part No.	Pipe Size	RS	H	C	Finish*
7220400PL	4	7/8	10-1/2	8	PL
7220600PL	6	1	11-11/16	8	PL
7220800PL	8	1	12-11/16	8	PL
7221000PL	10	1-1/4	13-7/8	8	PL



12

Conforms With: Federal Specification **WW-H-171** (Type 39), Manufacturers Standardization Society **ANSI/MSS-SP-58** (Type 38); install in accordance with **ANSI/MSS-SP-69**.

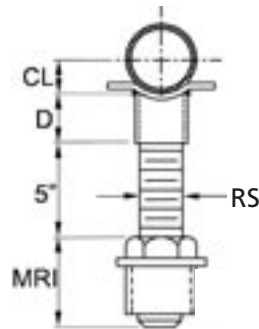
All dimensions are in inches unless otherwise noted.

*See page 2 for finish and material descriptions. All material is Carbon Steel unless otherwise noted.

Pipe Supports, Guides, Shields, and Saddles

Model #723 Adjustable Pipe Saddle Support Assembly

APPLICATION: To support horizontal pipe from stanchions where vertical adjustment is needed.



Part No.	Pipe Size	CL	RS	MRI	D	Finish*
7230250PL	2-1/2	1-7/16	1-1/2	1-11/16	2-1/4	PL
7230300PL	3	2	1-1/2	1-11/16	2-5/16	PL
7230350PL	3-1/2	2-1/4	1-1/2	1-11/16	2-5/16	PL
7230400PL	4	2-1/2	2	1-13/16	2-3/8	PL
7230500PL	5	3	2	1-13/16	2-3/8	PL
7230600PL	6	3-9/16	2	1-13/16	2-15/16	PL
7230800PL	8	4-11/16	2	1-13/16	2-11/16	PL
7231000PL	10	5-3/4	2	1-13/16	3	PL
7231200PL	12	6-3/4	2	1-13/16	3-7/16	PL
7231400PL	14	7-3/8	2-1/2	2-1/4	4	PL
7231600PL	16	8-3/8	2-1/2	2-1/4	4-3/8	PL
7231800PL	18	9-1/2	2-1/2	2-1/4	4-11/16	PL
7232000PL	20	10-1/2	2-1/2	2-1/4	5-1/2	PL
7232400PL	24	12-1/2	2-1/2	2-1/4	5-15/16	PL
7232600PL	26	13-1/2	2-1/2	2-1/4	6-1/8	PL
7233000PL	30	15-1/2	2-1/2	2-1/4	6-1/4	PL
7233200PL	32	16-1/2	2-1/2	2-1/4	6-3/8	PL
7233600PL	36	18-1/2	2-1/2	2-1/4	6-15/16	PL

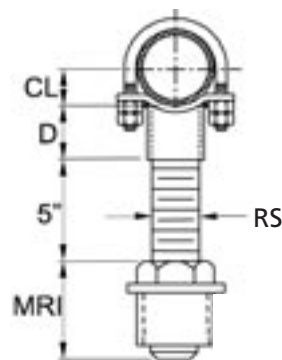
Conforms With: Federal Specification **WW-H-171** (Type 38, 39), Manufacturers Standardization Society **ANSI/MSS-SP-58** (Type 37,38); install in accordance with **ANSI/MSS-SP-69**.



Pipe Supports, Guides, Shields, and Saddles

Model #724 Adjustable Pipe Saddle Support with U-Bolt

APPLICATION: To support horizontal pipe from stanchions where vertical adjustment is needed.



Part No.	Pipe Size	CL	RS	MRI	D	Finish*
7240250PL	2-1/2	1-7/16	1-1/2	1-11/16	4	PL
7240300PL	3	2	1-1/2	1-11/16	4	PL
7240350PL	3-1/2	2-1/4	1-1/2	1-11/16	4	PL
7240400PL	4	2-1/2	2	1-13/16	4	PL
7240500PL	5	3	2	1-13/16	4	PL
7240600PL	6	3-9/16	2	1-13/16	4	PL
7240800PL	8	4-11/16	2	1-13/16	4	PL
7241000PL	10	5-3/4	2	1-13/16	4	PL
7241200PL	12	6-3/4	2	1-13/16	4	PL
7241400PL	14	7-3/8	2-1/2	2-1/4	4	PL
7241600PL	16	8-3/8	2-1/2	2-1/4	4	PL
7241800PL	18	9-1/2	2-1/2	2-1/4	4	PL
7242000PL	20	10-1/2	2-1/2	2-1/4	4	PL
7242400PL	24	12-1/2	2-1/2	2-1/4	4	PL
7242600PL	26	13-1/2	2-1/2	2-1/4	6-1/8	PL
7243000PL	30	15-1/2	2-1/2	2-1/4	4	PL
7243200PL	32	16-1/2	2-1/2	2-1/4	4	PL
7243600PL	36	18-1/2	2-1/2	2-1/4	4	PL

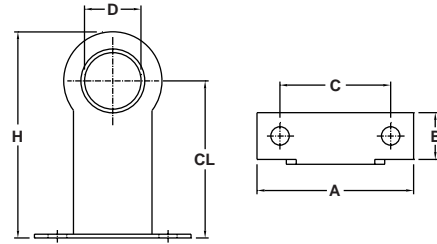
Conforms With: Federal Specification **WW-H-171** (Type 38, 39), Manufacturers Standardization Society **ANSI/MSS-SP-58** (Type 37,38); install in accordance with **ANSI/MSS-SP-69**.

Pipe Supports, Guides, Shields, and Saddles

Model #800 Extended Pipe Stay

APPLICATION: Used for water, heat, or gas lines.
Sized for copper or iron pipe size.

NOTE: Specify copper or iron pipe size.

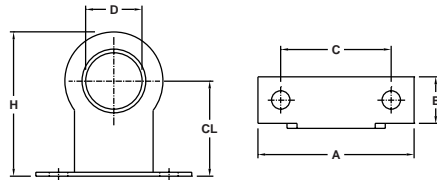


Part No.	Copper Pipe Size	Iron Pipe Size	H	CL	A	B	C	D	Finish*
800037050EP	1/2	3/8	3-1/4	2-1/2	2-1/2	3/4	1-3/4	11/16	EP
800050075EP	3/4	1/2	3-1/4	2-1/2	2-1/2	3/4	1-3/4	15/16	EP
800075100EP	1	3/4	3-3/4	2-3/4	3-1/4	7/8	2	1-3/16	EP
800100125EP	1-1/4	1	3-1/2	2-3/4	3-1/4	7/8	2	1-7/16	EP

Model #801 Standard Pipe Stay

APPLICATION: Used for water, heat, or gas lines.
Sized for copper or iron pipe size.

NOTE: Specify copper or iron pipe size.



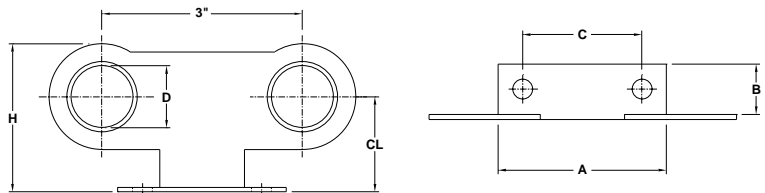
Part No.	Copper Pipe Size	Iron Pipe Size	H	CL	A	B	C	D	Finish*
801037050EP	1/2	3/8	2-3/16	1-7/16	2-1/2	3/4	1-3/4	11/16	EP
801050075EP	3/4	1/2	2-3/16	1-7/16	2-1/2	3/4	1-3/4	15/16	EP
801075100EP	1	3/4	2-9/16	1-5/8	3-1/4	3/4	2	1-3/16	EP
801100125EP	1-1/4	1	2-9/16	1-5/8	3-1/4	3/4	2	1-7/16	EP
801150000EP	-	1-1/2	4-1/4	2-13/16	4-1/2	1-1/8	3	1-15/16	EP
801125150EP	1-1/2	1-1/4	3-5/8	2-1/2	4	1	3	1-3/4	EP
801200000EP	-	2	4-3/8	2-15/16	5	1-1/4	3-1/2	2-3/8	EP
801000200EP	2	-	4-1/4	2-13/16	4-1/2	1-1/8	3	1-15/16	EP

12

Model #802 Double Pipe Stay

APPLICATION: Used for water, heat, or gas lines. Sized for copper or iron pipe size.

NOTE: Specify copper or iron pipe size.



Part No.	Copper Pipe Size	Iron Pipe Size	H	CL	A	B	C	D	Finish*
802037050EP	1/2	3/8	2-3/16	1-7/16	2-1/2	3/4	1-3/4	11/16	EP
802050075EP	3/4	1/2	2-3/16	1-7/16	2-1/2	3/4	1-3/4	15/16	EP
802075100EP	1	3/4	2-9/16	1-5/8	3-1/4	3/4	2	1-3/16	EP



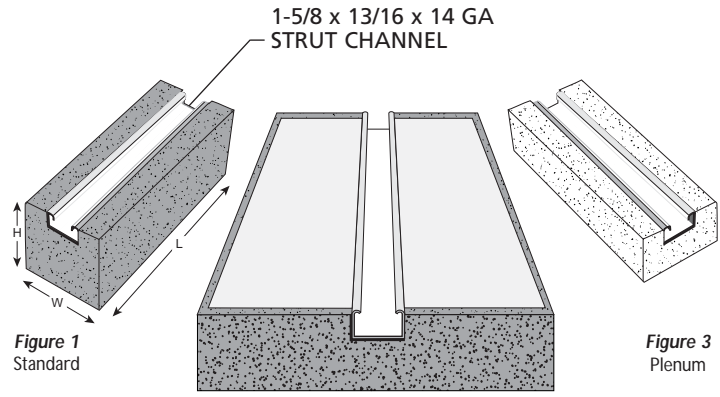
All dimensions are in inches unless otherwise noted.
*See page 2 for finish and material descriptions. All material is Carbon Steel unless otherwise noted.

Pipe Supports, Guides, Shields, and Saddles

Model #PP Pipe Pier™

APPLICATION: Pipe and conduit support for rooftops and raised floor applications. Uses standard strut accessories. Designed to allow a soft pliable barrier between the piping system and the roof or floor surface.

MATERIAL: Closed cell polyethylene, UV resistant foam block with chemically bonded 1-5/8"x 13/16" 14 gauge solid pre-galvanized strut.



Part No.	Description Pipe Pier Supports Pre-Galv Strut	Strut Finish	Max. Recom. Load (lbs)	Fig. No.
PP50H2AH	2"H x 4" W x 10-1/2"L	Pre-Gal	50	3
PP50H4	4"H x 4" W x 10-1/2"L	Pre-Gal	50	1
PP50H6	6"H x 4" W x 10-1/2"L	Pre-Gal	50	1
PP150H4	4"H x 12" W x 12"L	Pre-Gal	150	2
PP300H4	4"H x 12" W x 21-1/2"L	Pre-Gal	300	2

Load Rating: 5 lbs. Per linear inch of strut
The product is banded, not boxed.

Specification for Pipe Pier Roof Pipe Supports

Piping on roof surfaces shall be supported by a polyethylene foam block with an integral strut channel for receiving standard strut clamps and accessories. Pipe Pier shall be installed according to manufacturer's recommendations. Roof pipe supports shall be spaced according to industry standards and shall be installed to allow for expansion and contraction.

Pipe Pier complies with:

- Uniform Mechanical Code ('97) 1312.2 for gas piping.
- Uniform Mechanical Code ('97) 1201.1.6.2 for hydronic piping.

Pipe Pier is a trademark of Pipe Pier Inc.

Visit our website for the latest application data on Pipe Pier. www.erico.com

All dimensions are in inches unless otherwise noted.
*See page 2 for finish and material descriptions. All material is Carbon Steel unless otherwise noted.