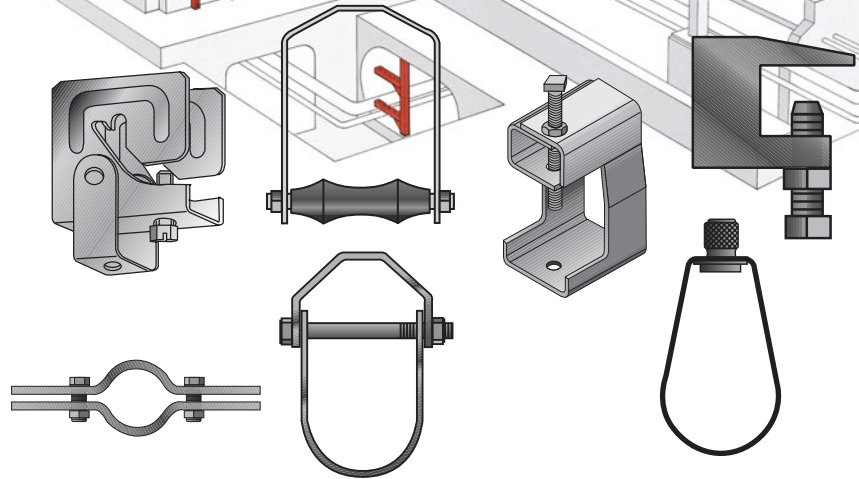
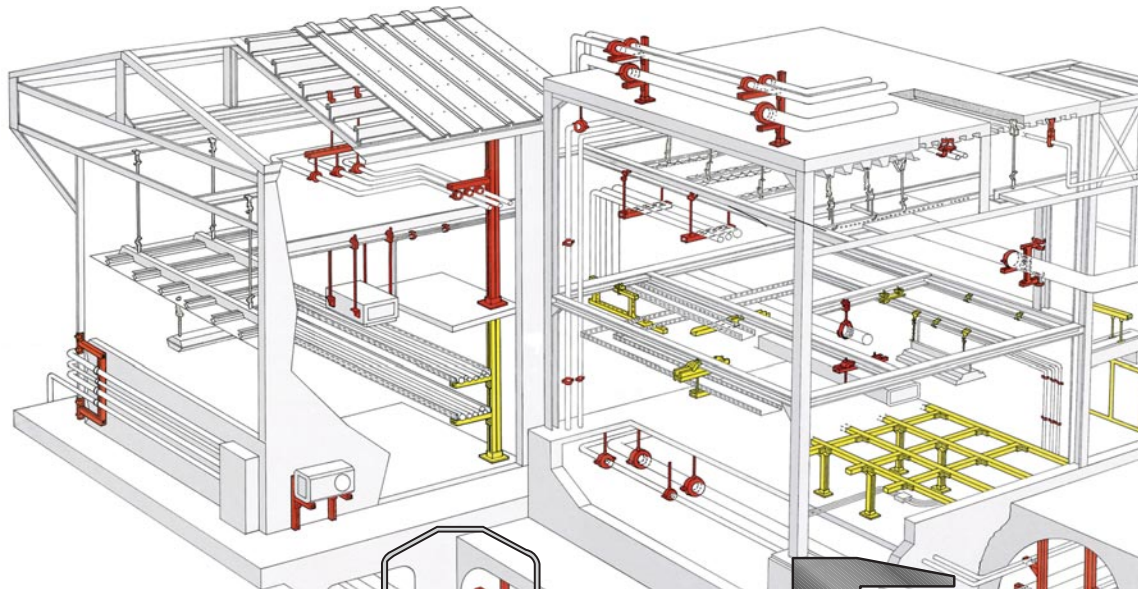


**CADDY**<sup>®</sup>

# Pipe Hangers and Supports

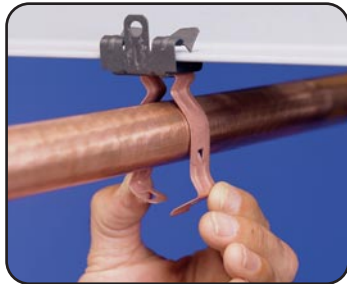


**ERICO**<sup>®</sup>  
100 YEARS YOUNG  
1903 - 2003

# THE PROVEN BRANDS IN MECHANICAL HANGERS



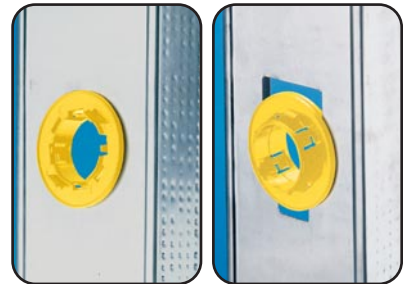
Here's the **NEW STUFF**



This hammer-on pipe hanger finger-closes tight in seconds and eliminates the need for threaded rod.  
See page 40



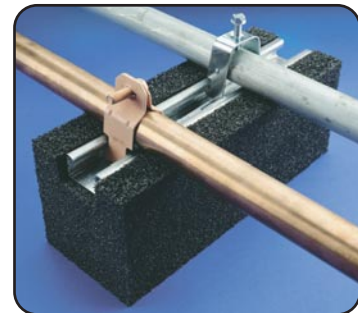
CADDY® hammer-on beam clamps allow for secure installations to beam with only a hammer.  
See page 38-40



One Grommet to fit every metal stud hole.  
See page 106



No tools are required for this press-on protection plate.  
See page 105



The Pipe Pier™ system eliminates time-consuming fabrication and reduces rooftop wear and tear.  
See page 95



This clamping system allows for quick positioning of pipe and tube between studs.  
See page 104-105



These innovative new hangers combine a window bracket and beam clamp in one.  
See page 13-14



The multi-purpose rod hanger fits C and Z purlin as well as I beam.  
See page 20



member:



# Table of Contents

|  |           |
|--|-----------|
| <u>Technical Information and Notes</u>                     | <b>1</b>  |
| <u>Pictorial Table of Contents</u>                         | <b>2</b>  |
| <u>Beam Clamps</u>   | <b>3</b>  |
| <u>Structural Attachments</u>                              | <b>4</b>  |
| <u>Intermediate Attachments</u>                            | <b>5</b>  |
| <u>Loop Hangers</u>  | <b>6</b>  |
| <u>Clevis Hangers</u>                                      | <b>7</b>  |
| <u>Pipe Clamps</u>   | <b>8</b>  |
| <u>Split Ring Hangers</u>                                  | <b>9</b>  |
| <u>J-Hangers</u>   | <b>10</b> |
| <u>Pipe Rollers and Roller Supports</u>                    | <b>11</b> |
| <u>Pipe Supports, Guides, Shields, and Saddles</u>         | <b>12</b> |
| <u>Sway Bracing</u>  | <b>13</b> |
| <u>Nuts, Washers, and Hardware</u>                         | <b>14</b> |
| <u>Pipe Hanger and Support: Recommended Specifications</u> | <b>15</b> |
| <u>Index (by Model No.)</u>                                |           |

All dimensions are in inches unless otherwise noted.

\*See page 2 for finish and material descriptions. All material is Carbon Steel unless otherwise noted.

# Technical Information and Notes

1

## DIMENSIONAL LEGEND

|                            |                                  |
|----------------------------|----------------------------------|
| <b>A</b> Adjustment        | <b>BS</b> Bolt Size              |
| <b>CL</b> Center Line      | <b>H</b> Height                  |
| <b>HS</b> Hole Size        | <b>ID</b> Inside Diameter        |
| <b>L</b> Length            | <b>MRI</b> Minimum Rod Insertion |
| <b>OD</b> Outside Diameter | <b>PS</b> Pipe Size              |
| <b>R</b> Radius            | <b>RS</b> Rod Size               |
| <b>T</b> Thickness         | <b>W</b> Width                   |

Made to Order Dimensions may be available on request.

## MATERIAL USED

### **CAST IRON:**

Grey Cast Iron, ANSI/ASTM A 48-76, Class #20

### **MALLEABLE IRON:**

ANSI/ASTM A 47-77, Grade Number 32510

### **SPRING STEEL:**

High Carbon Steel, tempered.

### **STAINLESS STEEL:**

(S4) ANSI Type 304 Stainless Steel: (S6) ANSI Type 316, ASTM A240

### **STEEL:**

- M1020 Merchant Bar Quality, ANSI/ASTM A 36
- Prime Quality, Low Carbon, Hot Rolled Sheet, (may be Pickled and Oiled) ANSI/ASTM A 569
- Commercial Quality, Low Carbon, Cold Rolled, ANSI/ASTM A 366

## INSTALLATION

1. All pipe supports, hangers, intermediate components and structural attachments must **ONLY** be used to support pipe, tubing or conduit as stated herein and are **NEVER** to be used for any other purpose.
2. All pipe supports and hangers are designed **ONLY** for **STATIONARY** piping unless otherwise noted.
3. All supports, hangers, clamps and accessories shown to use two nuts on the hanger rod or a jam nut must have nuts tightened securely to assure proper performance.

## FINISHES

Standard Finish on all products is plain without coating unless noted. Alternative finishes may be available upon request.

### **CADDY® COAT:**

Electrostatic coating.

### **COPPER:**

**CP‡** Copper electroplate (no corrosion protection; for identification purposes only).  
(Alternate finish is CADDY COAT.)

### **EPOXY: EP**

### **LAMINATE:**

**FL** Felt Lined

### **PAINTED:**

**RO** Red Oxide Primer  
**PT** Painted (Color may vary)

### **PLAIN:**

**PL** Plain without coating

**POLYMER:** (normally applied by fluidized bed process, 5 mil minimum thickness)

**PVC (VC)** Polyvinyl Chloride

### **ZINC:**

**EG‡** Zinc electroplate (ANSI/ASTM B 633)

**PRE-GAL (PG)** Continuous mill annealed and galvanized. Cut edges and welded areas are not zinc coated. Zinc near the uncoated metal becomes a sacrificial anode which protects the bare areas after exposure (ANSI/ASTM A 525 and 526).

**HDG (HD)** Hot Dipped Galvanization after fabrication; submerged in a bath of molten zinc; forms a metallurgical bond covering all surfaces (ANSI/ASTM A 123).

**ZP‡** Zinc and Phosphate coatings combined to provide a corrosion resistant barrier to resist rusting in accordance with ASTM B117-61 Federal Test Number QQM-151.

‡ EG, ZP & CP Finish began a transition to **CADDY COAT** Technology in 2001.



All dimensions are in inches unless otherwise noted.  
\*See page 2 for finish and material descriptions. All material is Carbon Steel unless otherwise noted.

## WARRANTY

Seller warrants for one year from the date of Shipment Seller's manufactured products to the extent that Seller will replace those having defects in material or workmanship when used for the purpose and in the manner which Seller recommends. If Seller's examination shall disclose to its satisfaction that the products are defective, and an adjustment is required, the amount of such adjustment shall not exceed the net sales price of the defective products only and no allowance will be made for labor or expense of repairing or replacing defective products or workmanship or damage resulting from the same. Seller warrants the products that it sells of other manufacturers to the extent of the warranties of their respective makers. Where engineering design or fabrication work is supplied, Buyer's acceptance of Seller's design or of delivery of work shall relieve Seller of all further obligation, other than as expressed in Seller's product warranty. THIS IS SELLER'S SOLE WARRANTY. SELLER MAKES NO OTHER WARRANTY OF ANY KIND, EXPRESSED OR IMPLIED: AND ALL IMPLIED WARRANTIES OF MERCHANTABILITY AND FITNESS FOR A PARTICULAR PURPOSE WHICH EXCEED SELLER'S AFORESTATED OBLIGATION ARE HEREBY DISCLAIMED BY SELLER AND EXCLUDED FROM THE WARRANTY. Seller neither assumes, nor authorizes any person to assume for it, any other obligation in connection with the sale of its engineering designs or products. This warranty shall not apply to any products or parts of products which (a) have been repaired or altered outside of Seller's factory, in any manner; or (b) have been subjected to misuse, negligence or accidents; or (c) have been used in a manner contrary to Seller's instructions or recommendations. Seller shall not be responsible for design errors due to inaccurate or incomplete information supplied by Buyer or its representatives.

## WARNING

Hanger products included in this catalog are intended for installation and service as designed, specified or recommended herein. All Clevis Hangers and Loop Hangers may be used to hang only the pipe sizes for which they are designed. On occasion hanger products have failed when used for some purpose other than for which they were specified or recommended. Examples of misapplications include: the use of concrete inserts as a grapple for pulling pipe up to the appropriate elevation and suspension of clevis hangers, one under another, which can result in an accumulative load greater than the hanger will support. ERICO, Inc. pipe hanger products are produced in accordance with industry standards. Our customers should exercise care to use these products properly so as to avoid an on-the-job accident.

## SELLER'S LIABILITY

Seller will not be liable for any loss, damage, cost of repairs, incidental or consequential damages of any kind, whether based upon warranty (except for the obligation accepted by Seller under "Warranty" above), contract or negligence, arising in connection with the design, manufacture, sale, use or repair of the products or of the engineering designs supplied to Buyer.

## DESIGNS

All dimensions are  $\pm 5\%$  and product design and specifications are subject to change without notice.

## DESIGN AND MANUFACTURING

Supports and hangers may be manufactured in conformance with one or more of the following:  
Manufacturers Standardization Society MSS-SP-58  
Federal Specification WW-H-171  
Factory Mutual Research Corporation  
Underwriters Laboratories, Inc.  
National Fire Protection Association NFPA-13 , NFPA 24  
ANSI Code for Pressure Piping

## TERMS AND CONDITIONS OF SALE

For ordering, terms and conditions of sale, please consult our current price guide.

All dimensions are in inches unless otherwise noted.

\*See page 2 for finish and material descriptions. All material is Carbon Steel unless otherwise noted.

# Pictorial Table of Contents

## Beam Clamps

2



No. 200 • Page 13  
Steel "C" Clamp  
MSS-SP-69 #23  
WW-H-171 #23



No. 200RS • Page 13  
Dual Purpose Strut  
Beam Clamp  
(Standard)



STCB6 • Page 14  
Dual Purpose Strut  
Beam Clamp  
(Widemouth)



No. 255 • Page 14  
Malleable "C" Clamp  
MSS-SP-69 #23  
WW-H-171 #23



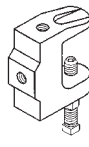
No. 255L • Page 15  
Malleable "C" Clamp  
With Locknut  
WW-H-171 #23



No. 255C • Page 15  
Retaining Strap



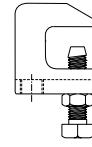
No. 547 • Page 16  
"Super" Steel "C" Clamp  
No. 548 • Page 16  
"Super" Steel "C" Clamp  
with Locknut



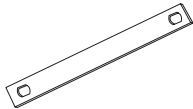
No. BC26 • Page 16  
1/4" Malleable  
Reversible Beam  
Clamp



No. 300 • Page 17  
No. 300I (Import) • Page 17  
Malleable Beam Clamp  
Universal/Reversible  
MSS-SP-69 #19, 23  
WW-H-171 #19, 23



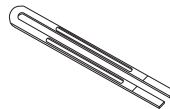
No. 305 • Page 17  
Steel Top  
Beam Clamp



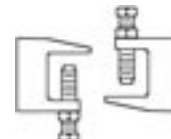
No. 35RS • Page 18  
Beam Clamp  
Retainer Strap



No. 300C • Page 18  
Retainer Strap



No. 345L • Page 18  
Slip Lock  
"Retro Fit"  
Retainer Strap



No. 310 • Page 19  
Big Mouth  
Universal/Reversible  
Beam Clamp  
MSS-SP-69 #19, 23  
WW-H-171 #19, 23



No. 315 • Page 19  
Wide Flange  
Purlin Clamp  
MSS-SP-69 #19, 23  
WW-H-171 #19, 23



PH • Page 20  
Multi-Flange  
Beam Clamp



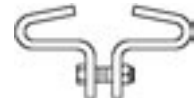
PAR/ET/RA • Page 20  
Pipe-to-Beam Clamp



No. 356 • Page 21  
Wood Joist  
Beam Clamp



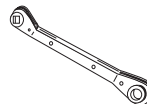
No. 360 • Page 21  
Malleable Adjustable  
Center Load Beam Clamp  
MSS-SP-69 #30  
WW-H-171 #30



No. 361 • Page 22  
Steel Center Load  
Beam Clamp  
MSS-SP-69 #21  
WW-H-171 #21



No. 363 • Page 22  
Adjustable  
Beam Clamp  
MSS-SP-69 #27



No. 55 • Page 22  
Beam Clamp  
Ratchet Wrench



All dimensions are in inches unless otherwise noted.  
\*See page 2 for finish and material descriptions. All material is Carbon Steel unless otherwise noted.

# Pictorial Table of Contents

## Structural Attachments

2



No. 7 • Page 23  
One Hole Pipe Strap



No. 8 • Page 23  
Two Hole Pipe Strap



No. 470 • Page 24  
Short Clip



No. 9 • Page 24  
Perforated Hanger  
Strap



No. 107 • Page 24  
One Hole  
CPVC Pipe Strap



No. 108 • Page 25  
Two Hole  
CPVC Pipe Strap



No. 109 • Page 25  
Side mount  
CPVC Pipe Strap



SO • Page 25  
Stand-Off Two-Hole  
CPVC Pipe Hanger



No. 37 • Page 26  
Eye Socket



No. 38 • Page 26  
Offset Eye Socket



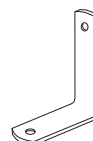
No. 135 • Page 27  
"Yook" Hanger



No. 137 • Page 28  
"Yook" Hanger  
Wrap Around  
"Type A"



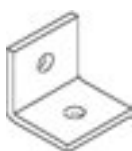
No. 137 • Page 28  
"Yook" Hanger  
Wrap Around  
"Type B"



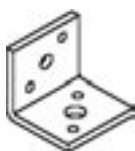
No. 319 • Page 28  
Return Line  
Angle Bracket



No. 320 • Page 29  
Welded Beam  
Attachment  
MSS-SP-69 #22  
WW-H-171 #22



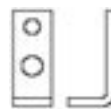
No. 325 • Page 30  
Side Beam  
Attachment  
MSS-SP-69 #34  
WW-H-171 #35



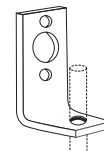
No. 326 • Page 30  
Universal Side  
Beam Attachment  
MSS-SP-69 #34  
WW-H-171 #35



No. 327 • Page 31  
Malleable Side Beam  
Connector



No. 328 • Page 31  
Tapped Steel Side  
Beam Connector  
MSS-SP-69 #34  
WW-H-171 #35



No. 58 • Page 32  
Tapped Steel Side  
Beam Connector



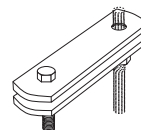
No. 340 • Page 32  
Square Steel Plate



No. 345R • Page 32  
Concrete Drop-In  
Anchor



No. 348 • Page 33  
Light Duty  
Welded Bracket



No. 350 • Page 33  
Rod Clip



No. 351 • Page 33  
Light Duty  
Welded Wall Bracket

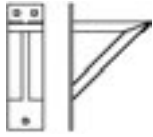
All dimensions are in inches unless otherwise noted.

\*See page 2 for finish and material descriptions. All material is Carbon Steel unless otherwise noted.

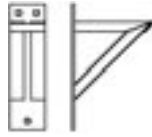
# Pictorial Table of Contents

## Structural Attachments (cont.)

2



No. 352 • Page 34  
Medium Duty  
Wall Bracket



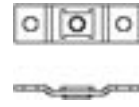
No. 353 • Page 34  
Heavy Duty  
Wall Bracket  
MSS-SP-69 #33  
WW-H-171 #34



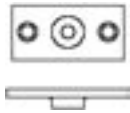
No. 355 • Page 35  
Steel Concrete Insert  
MSS-SP-69 #18  
WW-H-171 #19



No. 355N • Page 35  
Steel Concrete  
Insert Nut



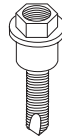
No. 365 • Page 36  
Steel Wall Plate



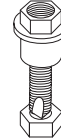
No. 365M • Page 36  
Malleable Wall Plate



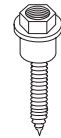
No. 370A • Page 36  
Metal Concrete  
Deck Insert



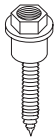
HMZG550 • Page 37  
3/8" Rod Anchor  
For Steel



HMZG471 • Page 37  
3/8" Rod Anchor  
For Steel



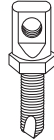
HMZG660 • Page 37  
3/8" Rod Anchor  
For Wood



HMZG730 • Page 37  
3/8" Rod Anchor  
For Concrete



HMZH476 • Page 37  
3/8" Rod Anchor  
For Sidewall/Purlin



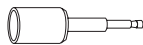
HMZH455 • Page 37  
3/8" Rod Anchor  
For Sidewall



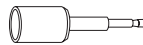
HMZH475 • Page 37  
3/8" Rod Anchor  
For Steel



HMZH665 • Page 37  
3/8" Rod Anchor  
For Sidewall/Wood



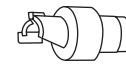
HMZE200 • Page 37  
Recessed Drive  
Socket



HMZE215 • Page 37  
Vertical Recessed  
Drive Socket



HMZE220 • Page 37  
Concrete & Masonry  
Recessed Drive Sleeve



HMZE230 • Page 37  
Carbide Countersink  
Tool



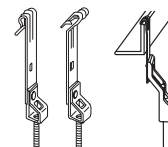
HMZE380 • Page 37  
Hex Shank Drill Bit



RAWL • Page 37  
Rawl Pipe Spike



4TI/6TI • Page 38  
Hammer-on  
Rod Clip



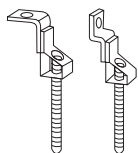
AF, VF, VAFT • Page 38  
Hammer-on  
C & Z Purlin Rod Clip



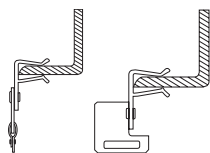
All dimensions are in inches unless otherwise noted.  
\*See page 2 for finish and material descriptions. All material is Carbon Steel unless otherwise noted.

# Pictorial Table of Contents

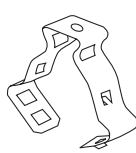
## Structural Attachments (cont.)



**4T/6T • Page 38**  
Rod Clip  
With Bracket



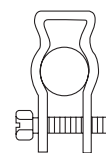
**MSS/MSR • Page 39**  
Hammer-on  
Strap Hanger Clip



**No. 6M-32M • Page 39**  
Finger-close  
Pipe Clamp



**No. 6M-32M • Page 40**  
Hammer-on  
Finger-close  
Pipe Clamp



**No. CD • Page 41**  
One-piece  
Pipe Clip

2

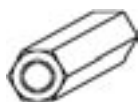
## Intermediate Attachments



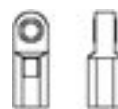
**No. 25 • Page 42**  
Steel Rod Coupling



**No. 25S • Page 42**  
Short Steel Rod  
Coupling



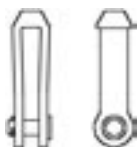
**No. 25R • Page 42**  
Reducing  
Rod Coupling



**No. 26 • Page 42**  
Malleable  
Extension Piece



**No. 30 • Page 43**  
Forged Steel  
Turnbuckle  
MSS-SP-69 #13  
WW-H-171 #13



**No. 31 • Page 43**  
Forged Steel Clevis  
MSS-SP-69 #14  
WW-H-171 #14



**No. 35 • Page 44**  
Forged Steel Eye Nut  
MSS-SP-69 #17  
WW-H-171 #17



**No. 40 • Page 44**  
Eye Rod



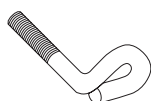
**No. 47 • Page 44**  
Malleable Eye  
Socket  
MSS-SP-69 #16  
WW-H-171 #16



**No. 50 • Page 45**  
All Thread Rod



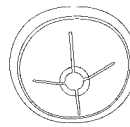
**No. 51 • Page 46**  
Threaded Stud



**No. 80 • Page 47**  
Tie Bolt



**No. 85 • Page 47**  
Threaded J-Bolt



**No. 15 • Page 47**  
Rod Button



**No. 150 • Page 48**  
Standard "U" Bolt  
with 4 Hex Nuts  
MSS-SP-69 #24  
WW-H-171 #24

All dimensions are in inches unless otherwise noted.

\*See page 2 for finish and material descriptions. All material is Carbon Steel unless otherwise noted.

# Pictorial Table of Contents

## Loop Hangers

2



No. 100 • Page 49  
Swivel Loop Hanger  
Heavy Duty  
MSS-SP-69 #10  
WW-H-171 #10



No. 101 • Page 50  
Swivel Loop Hanger  
for Copper Tubing  
MSS-SP-69 #10  
WW-H-171 #10



No. 102 • Page 50  
PVC Coated  
Swivel Loop Hanger



No. 102A • Page 51  
PVC Coated  
Swivel Loop Hanger  
for Copper Tubing  
MSS-SP-69 #10  
WW-H-171 #10



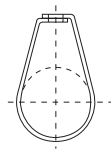
No. 103 • Page 51  
Swivel Loop Hanger  
with Insulation  
Shield



No. 104 • Page 52  
Hanger for  
Plastic Pipe



VTR • Page 52  
V-Trough for  
#104 Hanger



No. 105 • Page 53  
304 Stainless Steel  
Swivel Loop Hanger



No. 115 • Page 53  
NFPA Swivel Loop  
Hanger  
MSS-SP-69 #10  
WW-H-171 #10

## Clevis Hangers



No. 400 • Page 54  
Standard  
Clevis Hanger  
MSS-SP-69 #1  
WW-H-171 #1



No. 401 • Page 55  
Galvanized  
Clevis Hanger  
MSS-SP-69 #1  
WW-H-171 #1



No. 402 • Page 56  
Clevis Hanger  
For Copper Tubing  
MSS-SP-69 #1  
WW-H-171 #12



No. 403 • Page 57  
Clevis Hanger with  
Insulation Shield



No. 405 • Page 58  
Clevis Hanger  
for AWWA Pipe  
MSS-SP-69 #1  
WW-H-171 #1



No. 406 • Page 59  
Stainless Steel  
Clevis Hanger



No. 410 • Page 60  
Light Duty  
Clevis Hanger  
MSS-SP-69 #1  
WW-H-171 #12



No. 415 • Page 61  
Long Leg Insulation  
Clevis Hanger  
MSS-SP-69 #1  
WW-H-171 #1



No. 420 • Page 62  
PVC Coated  
Clevis Hanger  
MSS-SP-69 #1  
WW-H-171 #1



All dimensions are in inches unless otherwise noted.  
\*See page 2 for finish and material descriptions. All material is Carbon Steel unless otherwise noted.

# Pictorial Table of Contents

## Pipe Clamps

2



No. 450 • Page 63  
Standard Pipe Clamp  
MSS-SP-69 #4  
WW-H-171 #4



No. 451 • Page 64  
Heavy Duty  
Pipe Clamp  
MSS-SP-69 #4  
WW-H-171 #4



No. 452 • Page 65  
Standard Double  
Bolt Pipe Clamp  
MSS-SP-69 #3  
WW-H-171 #3



No. 453 • Page 66  
Heavy Duty Double  
Bolt Pipe Clamp  
MSS-SP-69 #3  
WW-H-171 #3



No. 510 • Page 67-68  
Standard Riser Clamp  
MSS-SP-69 #8  
WW-H-171 #8



No. 511 • Page 69  
Copper Tubing  
Riser Clamp  
MSS-SP-69 #8  
WW-H-171 #8



No. 515 • Page 69  
DWV Riser Clamp  
for Pipe  
MSS-SP-69 #8  
WW-H-171 #8



No. 516 • Page 70  
Socket Clamp  
Washer

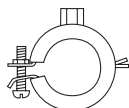


No. 517 • Page 70  
Socket Clamp



No. 520 • Page 71  
PVC Coated  
Riser Clamp  
MSS-SP-69 #8  
WW-H-171 #8

## Split Ring Hangers



No. Microfix • Page 72  
Finger Close  
Pipe Clamp



No. 111 • Page 72  
Malleable Swivel  
Split Ring Hanger  
MSS-SP-69 #6  
WW-H-171 #6



No. 455 • Page 73  
Split Ring  
Stand-Off Hanger  
MSS-SP-69 #12  
WW-H-171 #25



No. 456 • Page 73  
Split Ring Stand-Off  
Hanger for Copper Tubing  
MSS-SP-69 #12  
WW-H-171 #25

## J-Hangers



No. 418 • Page 74  
Galvanized  
J-Hanger  
MSS-SP-69 #5



No. 457 • Page 75  
Return Line J-Hook



No. 458 • Page 75  
Straight J-Hook

All dimensions are in inches unless otherwise noted.

\*See page 2 for finish and material descriptions. All material is Carbon Steel unless otherwise noted.

# Pictorial Table of Contents

2

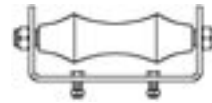
## Pipe Rollers & Roller Supports



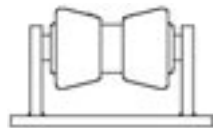
No. 605 • Page 76  
Two Rod  
Roller Hanger  
MSS-SP-69 #41  
WW-H-171 #42



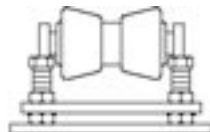
No. 610 • Page 76  
One Rod  
Roller Hanger  
MSS-SP-69 #43  
WW-H-171 #44



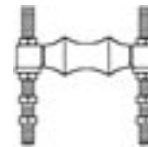
No. 615 • Page 77  
Pipe Roller Support



No. 617 • Page 77  
Pipe Roll Stand  
(Steel Frame)  
MSS-SP-69 #44  
WW-H-171 #45



No. 619 • Page 78  
Adjustable Pipe Roll  
Stand (Steel Frame)  
MSS-SP-69 #46  
WW-H-171 #47



No. 620 • Page 78  
Adjustable Pipe  
Roll Support  
MSS-SP-69 #41  
WW-H-171 #42

## Pipe Supports, Guides, Shields, and Saddles



No. 121 • Page 79  
High Density  
Insulation Shield



No. 125 • Page 79  
Low Compression  
Insulation Shield



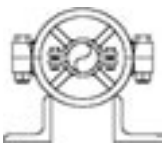
No. 126 • Page 80  
Shield and  
Insulation – Hot  
Piping



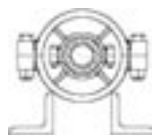
No. 127 • Page 80  
Shield and  
Insulation – Cold  
Piping



No. 630-635 • Page 81-86  
Insulation  
Protection Saddle  
MSS-SP-69 #39  
WW-H-171 #40



No. 650 • Page 87  
Pipe Alignment  
Guide  
for Hot Piping



No. 651 • Page 88  
Pipe Alignment  
Guide for Insulated  
Piping



No. 700 • Page 89  
Offset Pipe Clamp



No. 705 • Page 89  
Extended Pipe Clamp



No. 720 • Page 90  
Pipe Saddle Support  
MSS-SP-69 #37  
WW-H-171 #38



All dimensions are in inches unless otherwise noted.  
\*See page 2 for finish and material descriptions. All material is Carbon Steel unless otherwise noted.

# Pictorial Table of Contents

## Pipe Supports, Guides, Shields, and Saddles (cont.)

2



No. 721 • Page 91  
Pipe Saddle Support  
with U-Bolt  
MSS-SP-69 #37  
WW-H-171 #38



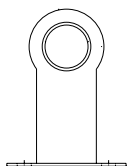
No. 722 • Page 91  
Adjustable  
Pipe Support  
MSS-SP-69 #38  
WW-H-171 #39



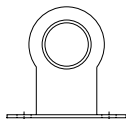
No. 723 • Page 92  
Adjustable Pipe  
Saddle Support  
MSS-SP-69 #38  
WW-H-171 #39



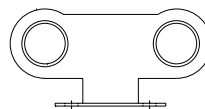
No. 724 • Page 93  
Adjustable Pipe Saddle  
Support with U-Bolt  
MSS-SP-69 #38  
WW-H-171 #39



No. 800 • Page 94  
Extended  
Pipe Stay



No. 801 • Page 94  
Standard  
Pipe Stay

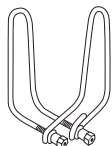


No. 802 • Page 94  
Double  
Pipe Stay

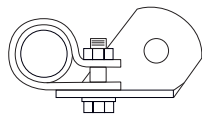


PP • Page 95  
Pipe Pier

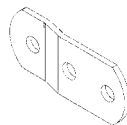
## Bracing Products



No. TP220 • Page 96  
Quick Clamp  
Sway Brace  
Pipe Attachment



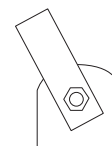
No. TP225 • Page 97  
Quick End  
Threadless Brace  
Fitting



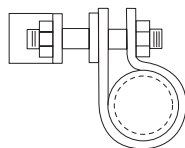
No. TP225A • Page 97  
Quick Loader  
Adapter Plate



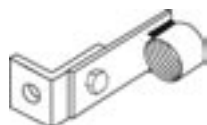
No. TP230 • Page 98  
Quick In-Line  
Longitudinal  
Sway Brace Clamp



No. TP235 • Page 98  
Quick Tab  
Longitudinal Sway  
Brace Fitting



No. TP240 • Page 99  
Quick 4-Way  
Longitudinal Sway  
Brace Clamp



No. TP280 • Page 99  
Threaded Brace  
Fitting



No. TP280P • Page 99  
Threaded Pipe  
End Only



No. 1910 • Page 99  
Pivoting Brace  
End Fitting



No. 1975 • Page 100  
Pivoting Brace  
End Fitting

All dimensions are in inches unless otherwise noted.

\*See page 2 for finish and material descriptions. All material is Carbon Steel unless otherwise noted.

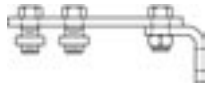
# Pictorial Table of Contents

## Bracing Products (cont.)

2



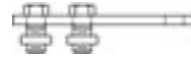
No. 1980 • Page 100  
Pivoting Brace End  
Fitting with  
2 Hole Fastener Plate



PA-1 • Page 100  
Pivoting Brace  
Assembly  
(90 Degrees)



PA-4 • Page 101  
Pivoting Brace  
Assembly  
(Offset)



PA-5 • Page 101  
Brace Fitting



VS • Page 101  
Vertical Rod  
Stiffener

## Nuts, Washers, and Hardware



No. 10 • Page 102  
Regular Hex Nut



No. 10H • Page 102  
Heavy Duty  
Hex Nut



No. 11 • Page 102  
Round Flat Washer



No. 12 • Page 102  
Fender Washer



No. 41 • Page 103  
Coach Screw Rod



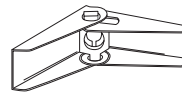
No. 42 • Page 103  
Lag Screw



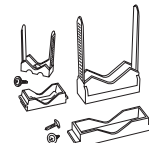
No. 43 • Page 103  
Wood Drive Screw



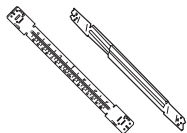
No. 100A • Page 104  
Insert Nut



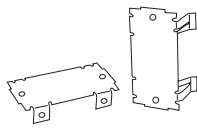
No. 145 • Page 104  
Spring Toggle Wing



TPC • Page 104  
Tube And  
Pipe Clamp



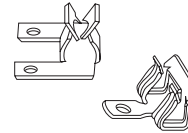
SGB/TSGB • Page 105  
Screw Gun  
Box Bracket



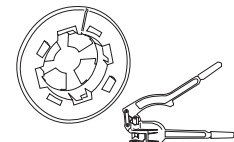
No. 304B2 • Page 105  
Press-on  
Protection Plate



No. 005 • Page 105  
Nail Plate  
for Wood Studs



No. 740/4H • Page 106  
Hammer-on Pipe  
Sleeve Clips



ESG/MSP • Page 106  
Easy Snap Grommet  
and Metal Stud Punch



All dimensions are in inches unless otherwise noted.  
\*See page 2 for finish and material descriptions. All material is Carbon Steel unless otherwise noted.

# Index

| Part No.    | Page | Part No.   | Page | Part No.    | Page | Part No.  | Page | Part No.    | Page |
|-------------|------|------------|------|-------------|------|-----------|------|-------------|------|
| 740         | 106  | 0100075PL  | 102  | 0310050PL   | 43   | 0425040EG | 103  | 0515002PL   | 46   |
| 740         | 106  | 0100087EG  | 102  | 0310062PL   | 43   | 0431402EG | 103  | 0515003PL   | 46   |
| 589137      | 72   | 0100087PL  | 102  | 0310075PL   | 43   | 0431602EG | 103  | 0515004PL   | 46   |
| 589142      | 72   | 010H0025EG | 102  | 0310087PL   | 43   | 0470025PL | 44   | 0515005PL   | 46   |
| 589144      | 72   | 010H0025PL | 102  | 0310100PL   | 43   | 0470037PL | 44   | 0515006PL   | 46   |
| 589147      | 72   | 010H0037EG | 102  | 0310125PL   | 43   | 0470050PL | 44   | 0515007PL   | 46   |
| 589152      | 72   | 010H0037PL | 102  | 0310150PL   | 43   | 0470062PL | 44   | 0515008PL   | 46   |
| 589157      | 72   | 010H0050EG | 102  | 0310175PL   | 43   | 0470075PL | 44   | 0515010PL   | 46   |
| 596555      | 72   | 010H0050PL | 102  | 0310200PL   | 43   | 0470087PL | 44   | 0515011PL   | 46   |
| 596565      | 72   | 010H0062EG | 102  | 034SL0600EG | 18   | 0502506EG | 45   | 0515012PL   | 46   |
| 596575      | 72   | 010H0062PL | 102  | 034SL0800EG | 18   | 0502506PL | 45   | 055SSW000   | 22   |
| 596585      | 72   | 010H0075EG | 102  | 034SL1000EG | 18   | 0502510EG | 45   | 0580037PL   | 32   |
| 596595      | 72   | 010H0075PL | 102  | 034SL1200EG | 18   | 0502510PL | 45   | 058W0037PL  | 32   |
| 596605      | 72   | 010H0087EG | 102  | 034SL1400EG | 18   | 0502512EG | 45   | 080750459PL | 47   |
| 596615      | 72   | 010H0087PL | 102  | 0350037PL   | 44   | 0502512PL | 45   | 085370400PL | 47   |
| 596625      | 72   | 0110025EG  | 102  | 0350050PL   | 44   | 0503706EG | 45   | 085370500PL | 47   |
| 596635      | 72   | 0110025PL  | 102  | 0350062PL   | 44   | 0503706PL | 45   | 085370600PL | 47   |
| 005275150PL | 105  | 0110037EG  | 102  | 0350075PL   | 44   | 0503710EG | 45   | 085370700PL | 47   |
| 005325275PL | 105  | 0110037PL  | 102  | 0350087PL   | 44   | 0503710PL | 45   | 085370800PL | 47   |
| 005550150PL | 105  | 0110050EG  | 102  | 035RS0600EG | 18   | 0503712EG | 45   | 085370900PL | 47   |
| 0070050EG   | 23   | 0110050PL  | 102  | 035RS0800EG | 18   | 0503712PL | 45   | 085371000PL | 47   |
| 0070075EG   | 23   | 0110062EG  | 102  | 035RS1000EG | 18   | 0505006EG | 45   | 085500600PL | 47   |
| 0070100EG   | 23   | 0110062PL  | 102  | 035RS1200EG | 18   | 0505006PL | 45   | 085500700PL | 47   |
| 0070125EG   | 23   | 0110075EG  | 102  | 035RS1400EG | 18   | 0505010EG | 45   | 085500800PL | 47   |
| 0070150EG   | 23   | 0110075PL  | 102  | 035RS1600EG | 18   | 0505010PL | 45   | 085500900PL | 47   |
| 0070200EG   | 23   | 0110087EG  | 102  | 035RS1800EG | 18   | 0505012EG | 45   | 085501000PL | 47   |
| 0080025CP   | 23   | 0110087PL  | 102  | 035RS2000EG | 18   | 0505012PL | 45   | 1000050EG   | 49   |
| 0080025EG   | 23   | 0120025EG  | 102  | 0370037EG   | 26   | 0506206EG | 45   | 1000050FL   | 49   |
| 0080037CP   | 23   | 0120037EG  | 102  | 0370050EG   | 26   | 0506206PL | 45   | 1000075EG   | 49   |
| 0080037EG   | 23   | 0120050EG  | 102  | 0380037EG   | 26   | 0506210EG | 45   | 1000075FL   | 49   |
| 0080050CP   | 23   | 0150037PC  | 47   | 0403704PL   | 44   | 0506210PL | 45   | 1000100EG   | 49   |
| 0080050EG   | 23   | 0150037W   | 47   | 0403706PL   | 44   | 0506212EG | 45   | 1000100FL   | 49   |
| 0080075CP   | 23   | 0150050W   | 47   | 0403708PL   | 44   | 0506212PL | 45   | 1000125EG   | 49   |
| 0080075EG   | 23   | 0250025EG  | 42   | 0413704PL   | 103  | 0507506EG | 45   | 1000125FL   | 49   |
| 0080100CP   | 23   | 0250037EG  | 42   | 0413706PL   | 103  | 0507506PL | 45   | 1000150EG   | 49   |
| 0080100EG   | 23   | 0250050EG  | 42   | 0413708PL   | 103  | 0507510EG | 45   | 1000150FL   | 49   |
| 0080125CP   | 23   | 0250062EG  | 42   | 0413710PL   | 103  | 0507510PL | 45   | 1000200EG   | 49   |
| 0080125EG   | 23   | 0250075EG  | 42   | 0413712PL   | 103  | 0507512EG | 45   | 1000200FL   | 49   |
| 0080150CP   | 23   | 0250087EG  | 42   | 0415004PL   | 103  | 0507512PL | 45   | 1000250EG   | 49   |
| 0080150EG   | 23   | 025R3725EG | 42   | 0415006PL   | 103  | 0508706EG | 45   | 1000250FL   | 49   |
| 0080200CP   | 23   | 025R5037EG | 42   | 0415008PL   | 103  | 0508706PL | 45   | 1000300EG   | 49   |
| 0080200EG   | 23   | 025R6250EG | 42   | 0415010PL   | 103  | 0508710EG | 45   | 1000300FL   | 49   |
| 0080250EG   | 23   | 025S0037EG | 42   | 0415012PL   | 103  | 0508710PL | 45   | 1000350EG   | 49   |
| 0080300EG   | 23   | 025S0050EG | 42   | 0422515EG   | 103  | 0508712EG | 45   | 1000350FL   | 49   |
| 0080400EG   | 23   | 0260037PL  | 42   | 0422520EG   | 103  | 0508712PL | 45   | 1000400EG   | 49   |
| 0097524EG   | 24   | 0260050PL  | 42   | 0423710EG   | 103  | 0513702PL | 46   | 1000400FL   | 49   |
| 0100025EG   | 102  | 0260062PL  | 42   | 0423715EG   | 103  | 0513703PL | 46   | 1000500EG   | 49   |
| 0100025PL   | 102  | 0260075PL  | 42   | 0423720EG   | 103  | 0513704PL | 46   | 1000600EG   | 49   |
| 0100037EG   | 102  | 0260087PL  | 42   | 0423725EG   | 103  | 0513705PL | 46   | 1000800EG   | 49   |
| 0100037PL   | 102  | 0300037PL  | 43   | 0423730EG   | 103  | 0513706PL | 46   | 100A0037EG  | 104  |
| 0100050EG   | 102  | 0300050PL  | 43   | 0423740EG   | 103  | 0513707PL | 46   | 100A0050EG  | 104  |
| 0100050PL   | 102  | 0300062PL  | 43   | 0425015EG   | 103  | 0513708PL | 46   | 1010050CP   | 50   |
| 0100062EG   | 102  | 0300075PL  | 43   | 0425020EG   | 103  | 0513710PL | 46   | 1010075CP   | 50   |
| 0100062PL   | 102  | 0300087PL  | 43   | 0425025EG   | 103  | 0513711PL | 46   | 1010100CP   | 50   |
| 0100075EG   | 102  | 0310037PL  | 43   | 0425030EG   | 103  | 0513712PL | 46   | 1010125CP   | 50   |

# Index

| Part No.   | Page | Part No.  | Page | Part No.  | Page | Part No.  | Page | Part No.   | Page |
|------------|------|-----------|------|-----------|------|-----------|------|------------|------|
| 1010150CP  | 50   | 1050350S4 | 53   | 1250500EG | 79   | 1354010EG | 27   | 1502400EG  | 48   |
| 1010200CP  | 50   | 1050400S4 | 53   | 1250600EG | 79   | 1354012EG | 27   | 1502400PL  | 48   |
| 1010250CP  | 50   | 1050500S4 | 53   | 1250700EG | 79   | 1354014EG | 27   | 1503000EG  | 48   |
| 1010300CP  | 50   | 1050600S4 | 53   | 1250701EG | 79   | 1354016EG | 27   | 1503000PL  | 48   |
| 1010350CP  | 50   | 1050800S4 | 53   | 1250800EG | 79   | 1354018EG | 27   | 16M        | 39   |
| 1010400CP  | 50   | 1070075EG | 24   | 1250801EG | 79   | 1354020EG | 27   | 16M24      | 40   |
| 1010500CP  | 50   | 1070100EG | 24   | 1250900EG | 79   | 1354024EG | 27   | 16M58      | 40   |
| 1010600CP  | 50   | 1070125EG | 24   | 1251000EG | 79   | 1354030EG | 27   | 16M912     | 40   |
| 1020050VC  | 50   | 1070150EG | 24   | 1251100EG | 79   | 1354036EG | 27   | 16MCP      | 39   |
| 1020075VC  | 50   | 1070200EG | 24   | 1251200EG | 79   | 1371206EG | 28   | 16MCP24    | 40   |
| 1020100VC  | 50   | 1080075EG | 25   | 1251400EG | 79   | 1371210EG | 28   | 16MCP58    | 40   |
| 1020125VC  | 50   | 1080100EG | 25   | 1251500EG | 79   | 1371212EG | 28   | 16MCP912   | 40   |
| 1020150VC  | 50   | 1080125EG | 25   | 1251600EG | 79   | 1372006EG | 28   | 1910000PL  | 99   |
| 1020200VC  | 50   | 1080150EG | 25   | 1251700EG | 79   | 1372010EG | 28   | 1975000PL  | 100  |
| 1020250VC  | 50   | 1080200EG | 25   | 1251800EG | 79   | 1372012EG | 28   | 1980000PL  | 100  |
| 1020300VC  | 50   | 1090075EG | 25   | 1251900EG | 79   | 1450037EG | 104  | 2000037EG  | 13   |
| 1020350VC  | 50   | 1090100EG | 25   | 1252000EG | 79   | 1450050EG | 104  | 2000037PL  | 13   |
| 1020400VC  | 50   | 1090125EG | 25   | 1252200EG | 79   | 1500050EG | 48   | 2000050EG  | 13   |
| 1020500VC  | 50   | 1090150EG | 25   | 1252400EG | 79   | 1500050PL | 48   | 2000050PL  | 13   |
| 1020600VC  | 50   | 1090200EG | 25   | 1252800EG | 79   | 1500075EG | 48   | 200RS375   | 13   |
| 1020800VC  | 50   | 1110075PL | 72   | 1351204EG | 27   | 1500075PL | 48   | 200RS500   | 13   |
| 102A0050VC | 51   | 1110100PL | 72   | 1351206EG | 27   | 1500100EG | 48   | 20M        | 39   |
| 102A0075VC | 51   | 1110125PL | 72   | 1351208EG | 27   | 1500100PL | 48   | 20M24      | 40   |
| 102A0100VC | 51   | 1110150PL | 72   | 1351210EG | 27   | 1500125EG | 48   | 20M58      | 40   |
| 102A0125VC | 51   | 1110200PL | 72   | 1351212EG | 27   | 1500125PL | 48   | 20M912     | 40   |
| 102A0150VC | 51   | 1110250PL | 72   | 1351214EG | 27   | 1500150EG | 48   | 20MCP      | 39   |
| 102A0200VC | 51   | 1110300PL | 72   | 1351216EG | 27   | 1500150PL | 48   | 20MCP24    | 40   |
| 102A0250VC | 51   | 1110350PL | 72   | 1351218EG | 27   | 1500200EG | 48   | 20MCP58    | 40   |
| 102A0300VC | 51   | 1110400PL | 72   | 1351220EG | 27   | 1500200PL | 48   | 20MCP912   | 40   |
| 102A0350VC | 51   | 1110500PL | 72   | 1351224EG | 27   | 1500250EG | 48   | 24M        | 39   |
| 102A0400VC | 51   | 1110600PL | 72   | 1351230EG | 27   | 1500250PL | 48   | 24M24      | 40   |
| 102A0500VC | 51   | 1150250EG | 53   | 1351236EG | 27   | 1500300EG | 48   | 24M58      | 40   |
| 102A0600VC | 51   | 1150300EG | 53   | 1352004EG | 27   | 1500300PL | 48   | 24M912     | 40   |
| 1030150EG  | 51   | 1150350EG | 53   | 1352006EG | 27   | 1500350EG | 48   | 24MCP      | 39   |
| 1030200EG  | 51   | 1150400EG | 53   | 1352008EG | 27   | 1500350PL | 48   | 24MCP24    | 40   |
| 1030250EG  | 51   | 1150500EG | 53   | 1352010EG | 27   | 1500400EG | 48   | 24MCP58    | 40   |
| 1030300EG  | 51   | 1150600EG | 53   | 1352012EG | 27   | 1500400PL | 48   | 24MCP912   | 40   |
| 1030350EG  | 51   | 1150800EG | 53   | 1352014EG | 27   | 1500500EG | 48   | 2550037EG  | 14   |
| 1030400EG  | 51   | 1210150PL | 79   | 1352016EG | 27   | 1500500PL | 48   | 2550037PL  | 14   |
| 1030500EG  | 51   | 1210200PL | 79   | 1352018EG | 27   | 1500600EG | 48   | 2550050EG  | 14   |
| 1030600EG  | 51   | 1210250PL | 79   | 1352020EG | 27   | 1500600PL | 48   | 2550050PL  | 14   |
| 1030800EG  | 51   | 1210300PL | 79   | 1352024EG | 27   | 1500800EG | 48   | 2550062EG  | 14   |
| 1040100EG  | 52   | 1210350PL | 79   | 1352030EG | 27   | 1500800PL | 48   | 2550062PL  | 14   |
| 1040200EG  | 52   | 1210400PL | 79   | 1352036EG | 27   | 1501000EG | 48   | 255C3706EG | 15   |
| 1050050S4  | 53   | 1210500PL | 79   | 1353008EG | 27   | 1501000PL | 48   | 255C3708EG | 15   |
| 1050075S4  | 53   | 1210600PL | 79   | 1353010EG | 27   | 1501200EG | 48   | 255C3710EG | 15   |
| 1050100S4  | 53   | 1210800PL | 79   | 1353012EG | 27   | 1501200PL | 48   | 255C3714EG | 15   |
| 1050125S4  | 53   | 1211000PL | 79   | 1353014EG | 27   | 1501400EG | 48   | 255C5006EG | 15   |
| 1050150S4  | 53   | 1250150EG | 79   | 1353016EG | 27   | 1501400PL | 48   | 255C5008EG | 15   |
| 1050200S4  | 53   | 1250200EG | 79   | 1353018EG | 27   | 1501600EG | 48   | 255C6210EG | 15   |
| 1050250S4  | 53   | 1250250EG | 79   | 1353020EG | 27   | 1501600PL | 48   | 255C6214EG | 15   |
| 1050300S4  | 53   | 1250300EG | 79   | 1353024EG | 27   | 1501800EG | 48   | 255L0037EG | 15   |
|            |      | 1250350EG | 79   | 1353030EG | 27   | 1501800PL | 48   | 255L0037PL | 15   |
|            |      | 1250400EG | 79   | 1353036EG | 27   | 1502000EG | 48   | 255L0050EG | 15   |
|            |      | 1250450EG | 79   | 1354008EG | 27   | 1502000PL | 48   | 255L0050PL | 15   |



# Index

| Part No.   | Page | Part No.   | Page | Part No.    | Page | Part No.   | Page | Part No.  | Page |
|------------|------|------------|------|-------------|------|------------|------|-----------|------|
| 255L0062EG | 15   | 320W0050PL | 29   | 3510200PL   | 33   | 370A0050PL | 36   | 4010500EG | 55   |
| 255L0062PL | 15   | 320W0062PL | 29   | 3510300PL   | 33   | 370A0062PL | 36   | 4010600EG | 55   |
| 3000037EG  | 17   | 320W0075PL | 29   | 3520100PL   | 34   | 370A0075PL | 36   | 4010800EG | 55   |
| 3000037PL  | 17   | 320W0087PL | 29   | 3520200PL   | 34   | 370A0087PL | 36   | 4011000EG | 55   |
| 3000050EG  | 17   | 320W0100PL | 29   | 3520300PL   | 34   | 4000050PL  | 54   | 4011200EG | 55   |
| 3000050PL  | 17   | 320W0111PL | 29   | 3530100PL   | 34   | 4000050RO  | 54   | 4011400EG | 55   |
| 3000062EG  | 17   | 320W0125PL | 29   | 3530200PL   | 34   | 4000075PL  | 54   | 4011600EG | 55   |
| 3000062PL  | 17   | 320W0150PL | 29   | 3530300PL   | 34   | 4000075RO  | 54   | 4011800EG | 55   |
| 3000075EG  | 17   | 320W0175PL | 29   | 3530400PL   | 34   | 4000100PL  | 54   | 4012000EG | 55   |
| 3000075PL  | 17   | 320W0200PL | 29   | 3530600PL   | 34   | 4000100RO  | 54   | 4012400EG | 55   |
| 3000087EG  | 17   | 320W0225PL | 29   | 3533500PL   | 34   | 4000125PL  | 54   | 4013000EG | 55   |
| 3000087PL  | 17   | 320W0250PL | 29   | 3550000EG   | 35   | 4000125RO  | 54   | 4020050CP | 56   |
| 300C6208EG | 18   | 3250037EG  | 30   | 3550000PL   | 35   | 4000150PL  | 54   | 4020075CP | 56   |
| 300C6210EG | 18   | 3250037PL  | 30   | 355N0025EG  | 35   | 4000150RO  | 54   | 4020100CP | 56   |
| 300C6212EG | 18   | 3250050EG  | 30   | 355N0025PL  | 35   | 4000200PL  | 54   | 4020125CP | 56   |
| 300C6214EG | 18   | 3250050PL  | 30   | 355N0037EG  | 35   | 4000200RO  | 54   | 4020150CP | 56   |
| 300C7506EG | 18   | 3250062EG  | 30   | 355N0037PL  | 35   | 4000250PL  | 54   | 4020200CP | 56   |
| 300C7508EG | 18   | 3250062PL  | 30   | 355N0050EG  | 35   | 4000250RO  | 54   | 4020250CP | 56   |
| 300C7510EG | 18   | 3250075EG  | 30   | 355N0050PL  | 35   | 4000300PL  | 54   | 4020300CP | 56   |
| 300C7514EG | 18   | 3250075PL  | 30   | 355N0062EG  | 35   | 4000300RO  | 54   | 4020350CP | 56   |
| 300C8706EG | 18   | 3250087EG  | 30   | 355N0062PL  | 35   | 4000350PL  | 54   | 4020400CP | 56   |
| 300C8708EG | 18   | 3250087PL  | 30   | 355N0075EG  | 35   | 4000350RO  | 54   | 4020500CP | 56   |
| 300C8710EG | 18   | 3250100EG  | 30   | 355N0075PL  | 35   | 4000400PL  | 54   | 4020600CP | 56   |
| 300C8714EG | 18   | 3250100PL  | 30   | 355N0087EG  | 35   | 4000400RO  | 54   | 4020800CP | 56   |
| 300I0037EG | 17   | 3260037EG  | 30   | 355N0087PL  | 35   | 4000500PL  | 54   | 4030150EG | 57   |
| 300I0037PL | 17   | 3260037PL  | 30   | 3560100PL   | 21   | 4000500RO  | 54   | 4030200EG | 57   |
| 304B2      | 105  | 3270037EG  | 31   | 3560200PL   | 21   | 4000600PL  | 54   | 4030250EG | 57   |
| 3050037PL  | 17   | 3270037PL  | 31   | 3560300PL   | 21   | 4000600RO  | 54   | 4030300EG | 57   |
| 3050037S6  | 17   | 3270050EG  | 31   | 3560400PL   | 21   | 4000800PL  | 54   | 4030350EG | 57   |
| 3050050PL  | 17   | 3270050PL  | 31   | 3560500PL   | 21   | 4000800RO  | 54   | 4030400EG | 57   |
| 3050050S6  | 17   | 3280037EG  | 31   | 3600000PL   | 21   | 4001000PL  | 54   | 4030450EG | 57   |
| 3100037EG  | 19   | 3280037PL  | 31   | 361024050PL | 22   | 4001000RO  | 54   | 4030500EG | 57   |
| 3100037PL  | 19   | 3280050PL  | 31   | 361025062PL | 22   | 4001200PL  | 54   | 4030600EG | 57   |
| 3100050EG  | 19   | 32M        | 39   | 361026075PL | 22   | 4001200RO  | 54   | 4030700EG | 57   |
| 3100050PL  | 19   | 32M24      | 40   | 361027087PL | 22   | 4001400PL  | 54   | 4030800EG | 57   |
| 3150037EG  | 19   | 32M58      | 40   | 361028087PL | 22   | 4001400RO  | 54   | 4030900EG | 57   |
| 3150037PL  | 19   | 32M912     | 40   | 361054050PL | 22   | 4001600PL  | 54   | 4031000EG | 57   |
| 3190100PL  | 28   | 32MCP      | 39   | 361055062PL | 22   | 4001600RO  | 54   | 4031100EG | 57   |
| 3190200PL  | 28   | 32MCP24    | 40   | 361056075PL | 22   | 4001800PL  | 54   | 4031200EG | 57   |
| 3190300PL  | 28   | 32MCP58    | 40   | 361057087PL | 22   | 4001800RO  | 54   | 4031400EG | 57   |
| 3190400PL  | 28   | 32MCP912   | 40   | 361058087PL | 22   | 4002000PL  | 54   | 4031500EG | 57   |
| 320L0037PL | 29   | 340A2503PL | 32   | 3630037PL   | 22   | 4002000RO  | 54   | 4031600EG | 57   |
| 320L0050PL | 29   | 340B2503PL | 32   | 3630050PL   | 22   | 4002400PL  | 54   | 4031700EG | 57   |
| 320L0062PL | 29   | 340C3703PL | 32   | 3630062PL   | 22   | 4002400RO  | 54   | 4031800EG | 57   |
| 320L0075PL | 29   | 340D3704PL | 32   | 3630075PL   | 22   | 4003000PL  | 54   | 4031900EG | 57   |
| 320L0087PL | 29   | 340E5004PL | 32   | 3650037CP   | 36   | 4010050EG  | 55   | 4032100EG | 57   |
| 320L0100PL | 29   | 345R0037EG | 32   | 3650037EG   | 36   | 4010075EG  | 55   | 4032200EG | 57   |
| 320L0112PL | 29   | 345R0050EG | 32   | 3650037PL   | 36   | 4010100EG  | 55   | 4050300EG | 58   |
| 320L0125PL | 29   | 345R0062EG | 32   | 365M0037CP  | 36   | 4010125EG  | 55   | 4050300PL | 58   |
| 320L0150PL | 29   | 3480100PL  | 33   | 365M0037EG  | 36   | 4010150EG  | 55   | 4050400EG | 58   |
| 320L0175PL | 29   | 3480200PL  | 33   | 365M0037PL  | 36   | 4010200EG  | 55   | 4050400PL | 58   |
| 320L0200PL | 29   | 3480300PL  | 33   | 365M0050CP  | 36   | 4010250EG  | 55   | 4050600EG | 58   |
| 320L0225PL | 29   | 3500037PL  | 33   | 365M0050EG  | 36   | 4010300EG  | 55   | 4050600PL | 58   |
| 320L0250PL | 29   | 3500050PL  | 33   | 365M0050PL  | 36   | 4010350EG  | 55   | 4050800EG | 58   |
| 320W0037PL | 29   | 3510100PL  | 33   | 370A0037PL  | 36   | 4010400EG  | 55   | 4050800PL | 58   |

# Index

| Part No.  | Page | Part No.  | Page | Part No.  | Page | Part No.  | Page | Part No.  | Page |
|-----------|------|-----------|------|-----------|------|-----------|------|-----------|------|
| 4051000EG | 58   | 4100350EG | 60   | 4201400VC | 62   | 4520075EG | 65   | 4550150EG | 73   |
| 4051000PL | 58   | 4100350PL | 60   | 4500050EG | 63   | 4520075PL | 65   | 4550150PL | 73   |
| 4051200EG | 58   | 4100400EG | 60   | 4500075EG | 63   | 4520100EG | 65   | 4550200EG | 73   |
| 4051200PL | 58   | 4100400PL | 60   | 4500100EG | 63   | 4520100PL | 65   | 4550200PL | 73   |
| 4051400EG | 58   | 4150050PL | 61   | 4500100PL | 63   | 4520125EG | 65   | 4550250EG | 73   |
| 4051400PL | 58   | 4150075PL | 61   | 4500125EG | 63   | 4520125PL | 65   | 4550250PL | 73   |
| 4051600EG | 58   | 4150100PL | 61   | 4500125PL | 63   | 4520150EG | 65   | 4550300EG | 73   |
| 4051600PL | 58   | 4150125PL | 61   | 4500150EG | 63   | 4520150PL | 65   | 4550300PL | 73   |
| 4051800EG | 58   | 4150150PL | 61   | 4500150PL | 63   | 4520200EG | 65   | 4550400EG | 73   |
| 4051800PL | 58   | 4150200PL | 61   | 4500200EG | 63   | 4520200PL | 65   | 4550400PL | 73   |
| 4052000EG | 58   | 4150250PL | 61   | 4500200PL | 63   | 4520250EG | 65   | 4560037CP | 73   |
| 4052000PL | 58   | 4150300PL | 61   | 4500250EG | 63   | 4520250PL | 65   | 4560050CP | 73   |
| 4052400EG | 58   | 4150400PL | 61   | 4500250PL | 63   | 4520300EG | 65   | 4560075CP | 73   |
| 4052400PL | 58   | 4150500PL | 61   | 4500300EG | 63   | 4520300PL | 65   | 4560100CP | 73   |
| 4053000PL | 58   | 4150600PL | 61   | 4500300PL | 63   | 4520400EG | 65   | 4560125CP | 73   |
| 4060050S4 | 59   | 4150800PL | 61   | 4500350EG | 63   | 4520400PL | 65   | 4560150CP | 73   |
| 4060075S4 | 59   | 4151000PL | 61   | 4500350PL | 63   | 4520500EG | 65   | 4560200CP | 73   |
| 4060100S4 | 59   | 4151200PL | 61   | 4500400EG | 63   | 4520500PL | 65   | 4560250CP | 73   |
| 4060125S4 | 59   | 4180050EG | 74   | 4500400PL | 63   | 4520600EG | 65   | 4560300CP | 73   |
| 4060150S4 | 59   | 4180050FL | 74   | 4500500EG | 63   | 4520600PL | 65   | 4570050PL | 75   |
| 4060200S4 | 59   | 4180075EG | 74   | 4500500PL | 63   | 4520800EG | 65   | 4570075PL | 75   |
| 4060250S4 | 59   | 4180075FL | 74   | 4500600EG | 63   | 4520800PL | 65   | 4570100PL | 75   |
| 4060300S4 | 59   | 4180100EG | 74   | 4500600PL | 63   | 4521000EG | 65   | 4570125PL | 75   |
| 4060350S4 | 59   | 4180100FL | 74   | 4500800EG | 63   | 4521000PL | 65   | 4570150PL | 75   |
| 4060400S4 | 59   | 4180125EG | 74   | 4500800PL | 63   | 4521200EG | 65   | 4570200PL | 75   |
| 4060500S4 | 59   | 4180125FL | 74   | 4501000EG | 63   | 4521200PL | 65   | 4570250PL | 75   |
| 4060600S4 | 59   | 4180150EG | 74   | 4501000PL | 63   | 4521400EG | 65   | 4570300PL | 75   |
| 4060800S4 | 59   | 4180150FL | 74   | 4501200EG | 63   | 4521400PL | 65   | 4570400PL | 75   |
| 4061000S4 | 59   | 4180200EG | 74   | 4501200PL | 63   | 4521600EG | 65   | 4580050PL | 75   |
| 4061200S4 | 59   | 4180200FL | 74   | 4501400EG | 63   | 4521600PL | 65   | 4580075PL | 75   |
| 4061400S4 | 59   | 4180250EG | 74   | 4501400PL | 63   | 4521800EG | 65   | 4580100PL | 75   |
| 4061600S4 | 59   | 4180250FL | 74   | 4501600EG | 63   | 4521800PL | 65   | 4580125PL | 75   |
| 4061800S4 | 59   | 4180300EG | 74   | 4501600PL | 63   | 4522000EG | 65   | 4580150PL | 75   |
| 4062000S4 | 59   | 4180300FL | 74   | 4501800EG | 63   | 4522000PL | 65   | 4580200PL | 75   |
| 4062400S4 | 59   | 4180350FL | 74   | 4501800PL | 63   | 4522400EG | 65   | 4580250PL | 75   |
| 4063000S4 | 59   | 4180400EG | 74   | 4502000EG | 63   | 4522400PL | 65   | 4580300PL | 75   |
| 4100050EG | 60   | 4180400FL | 74   | 4502000PL | 63   | 4530600PL | 66   | 4580400PL | 75   |
| 4100050PL | 60   | 4180500EG | 74   | 4502400EG | 63   | 4530800PL | 66   | 4700050PL | 24   |
| 4100075EG | 60   | 4180600EG | 74   | 4502400PL | 63   | 4531000PL | 66   | 4700075PL | 24   |
| 4100075PL | 60   | 4180800EG | 74   | 4503000EG | 63   | 4531200PL | 66   | 4700100PL | 24   |
| 4100100EG | 60   | 4200050VC | 62   | 4503000PL | 63   | 4531400PL | 66   | 4700125PL | 24   |
| 4100100PL | 60   | 4200075VC | 62   | 4510300PL | 64   | 4531600PL | 66   | 4700150PL | 24   |
| 4100125EG | 60   | 4200100VC | 62   | 4510400PL | 64   | 4531800PL | 66   | 4700200PL | 24   |
| 4100125PL | 60   | 4200125VC | 62   | 4510500PL | 64   | 4532000PL | 66   | 4700250PL | 24   |
| 4100150EG | 60   | 4200150VC | 62   | 4510600PL | 64   | 4532400PL | 66   | 4700300PL | 24   |
| 4100150PL | 60   | 4200200VC | 62   | 4510800PL | 64   | 4550037EG | 73   | 4700400PL | 24   |
| 4100200EG | 60   | 4200250VC | 62   | 4511000PL | 64   | 4550037PL | 73   | 4H58      | 106  |
| 4100200PL | 60   | 4200300VC | 62   | 4511200PL | 64   | 4550050EG | 73   | 4H58      | 106  |
| 4100250EG | 60   | 4200350VC | 62   | 4511400PL | 64   | 4550050PL | 73   | 4H58      | 106  |
| 4100250PL | 60   | 4200400VC | 62   | 4511600PL | 64   | 4550075EG | 73   | 4TI24     | 38   |
| 4100300EG | 60   | 4200500VC | 62   | 4511800PL | 64   | 4550075PL | 73   | 4TI58     | 38   |
| 4100300PL | 60   | 4200600VC | 62   | 4512000PL | 64   | 4550100EG | 73   | 4TI912    | 38   |
|           |      | 4200800VC | 62   | 4512400PL | 64   | 4550100PL | 73   | 4TIB      | 38   |
|           |      | 4201000VC | 62   | 4520050EG | 65   | 4550125EG | 73   | 4TIO      | 38   |
|           |      | 4201200VC | 62   | 4520050PL | 65   | 4550125PL | 73   | 5100050EG | 67   |



# Index

| Part No.  | Page | Part No.  | Page | Part No.  | Page | Part No.  | Page | Part No.  | Page |
|-----------|------|-----------|------|-----------|------|-----------|------|-----------|------|
| 5100050PL | 67   | 5110075CP | 69   | 6051800PL | 76   | 6201000PL | 78   | 6341000PL | 85   |
| 5100050RO | 67   | 5110100CP | 69   | 6052000PL | 76   | 6201200PL | 78   | 6341200PL | 85   |
| 5100075EG | 67   | 5110125CP | 69   | 6052400PL | 76   | 6201400PL | 78   | 6341400PL | 85   |
| 5100075PL | 67   | 5110150CP | 69   | 6053000PL | 76   | 6201600PL | 78   | 6341600PL | 85   |
| 5100075RO | 67   | 5110200CP | 69   | 6100250PL | 76   | 6201800PL | 78   | 6341800PL | 85   |
| 5100100EG | 67   | 5110250CP | 69   | 6100300PL | 76   | 6202000PL | 78   | 6342000PL | 85   |
| 5100100PL | 67   | 5110300CP | 69   | 6100350PL | 76   | 6202400PL | 78   | 6342400PL | 85   |
| 5100100RO | 67   | 5110350CP | 69   | 6100400PL | 76   | 6203000PL | 78   | 6350400PL | 86   |
| 5100125EG | 67   | 5110400CP | 69   | 6100500PL | 76   | 6300150PL | 81   | 6350500PL | 86   |
| 5100125PL | 67   | 5110500CP | 69   | 6100600PL | 76   | 6300350PL | 81   | 6350800PL | 86   |
| 5100125RO | 67   | 5110600CP | 69   | 6100800PL | 76   | 6300500PL | 81   | 6351000PL | 86   |
| 5100150EG | 67   | 5150150PL | 69   | 6101000PL | 76   | 6300600PL | 81   | 6351200PL | 86   |
| 5100150PL | 67   | 5150200PL | 69   | 6101200PL | 76   | 6300800PL | 81   | 6351600PL | 86   |
| 5100150RO | 67   | 5150300PL | 69   | 6101400PL | 76   | 6310150PL | 82   | 6351800PL | 86   |
| 5100200EG | 67   | 5150400PL | 69   | 6101600PL | 76   | 6310350PL | 82   | 6352000PL | 86   |
| 5100200PL | 67   | 5160075PL | 70   | 6101800PL | 76   | 6310500PL | 82   | 6352400PL | 86   |
| 5100200RO | 67   | 5160125PL | 70   | 6102000PL | 76   | 6310800PL | 82   | 6500100PT | 87   |
| 5100250EG | 67   | 5160137PL | 70   | 6102400PL | 76   | 6311000PL | 82   | 6500200PT | 87   |
| 5100250PL | 67   | 5160150PL | 70   | 6150250PL | 77   | 6311200PL | 82   | 6500300PT | 87   |
| 5100250RO | 67   | 5170300PL | 70   | 6150300PL | 77   | 6311400PL | 82   | 6500400PT | 87   |
| 5100300EG | 67   | 5170400PL | 70   | 6150350PL | 77   | 6311600PL | 82   | 6500500PT | 87   |
| 5100300PL | 67   | 5170600PL | 70   | 6150400PL | 77   | 6311800PL | 82   | 6500600PT | 87   |
| 5100300RO | 67   | 5170800PL | 70   | 6150500PL | 77   | 6312000PL | 82   | 6500700PT | 87   |
| 5100350EG | 67   | 5171000PL | 70   | 6150600PL | 77   | 6312400PL | 82   | 6500800PT | 87   |
| 5100350PL | 67   | 5171200PL | 70   | 6150800PL | 77   | 6320150PL | 83   | 6500900PT | 87   |
| 5100350RO | 67   | 5171400PL | 70   | 6151000PL | 77   | 6320350PL | 83   | 6501000PT | 87   |
| 5100400EG | 68   | 5171600PL | 70   | 6151200PL | 77   | 6320500PL | 83   | 6501100PT | 87   |
| 5100400PL | 68   | 5171800PL | 70   | 6151400PL | 77   | 6320800PL | 83   | 6501200PT | 87   |
| 5100400RO | 68   | 5172000PL | 70   | 6151600PL | 77   | 6321000PL | 83   | 6501300PT | 87   |
| 5100500EG | 68   | 5172400PL | 70   | 6151800PL | 77   | 6321200PL | 83   | 6501400PT | 87   |
| 5100500PL | 68   | 5200050VC | 71   | 6152000PL | 77   | 6321400PL | 83   | 6510100PT | 88   |
| 5100500RO | 68   | 5200075VC | 71   | 6152400PL | 77   | 6321600PL | 83   | 6510200PT | 88   |
| 5100600EG | 68   | 5200100VC | 71   | 6170350PL | 77   | 6321800PL | 83   | 6510300PT | 88   |
| 5100600PL | 68   | 5200125VC | 71   | 6170600PL | 77   | 6322000PL | 83   | 6510400PT | 88   |
| 5100600RO | 68   | 5200150VC | 71   | 6171000PL | 77   | 6322400PL | 83   | 6510500PT | 88   |
| 5100800EG | 68   | 5200200VC | 71   | 6171400PL | 77   | 6330150PL | 84   | 6510600PT | 88   |
| 5100800PL | 68   | 5200250VC | 71   | 6172000PL | 77   | 6330200PL | 84   | 6510700PT | 88   |
| 5100800RO | 68   | 5200300VC | 71   | 6172400PL | 77   | 6330250PL | 84   | 6510800PT | 88   |
| 5101000EG | 68   | 5200400VC | 71   | 6173000PL | 77   | 6330300PL | 84   | 6510900PT | 88   |
| 5101000PL | 68   | 5200500VC | 71   | 6174200PL | 77   | 6330350PL | 84   | 6511000PT | 88   |
| 5101000RO | 68   | 5200600VC | 71   | 6190350PL | 78   | 6330500PL | 84   | 6511100PT | 88   |
| 5101200EG | 68   | 5200800VC | 71   | 6190600PL | 78   | 6330800PL | 84   | 6511200PT | 88   |
| 5101200PL | 68   | 5470037PL | 16   | 6191000PL | 78   | 6331000PL | 84   | 6MCP      | 39   |
| 5101200RO | 68   | 5480050PL | 16   | 6191400PL | 78   | 6331200PL | 84   | 6MCP24    | 40   |
| 5101400EG | 68   | 6050250PL | 76   | 6192000PL | 78   | 6331400PL | 84   | 6MCP58    | 40   |
| 5101400PL | 68   | 6050300PL | 76   | 6192400PL | 78   | 6331600PL | 84   | 6MCP912   | 40   |
| 5101600EG | 68   | 6050350PL | 76   | 6193000PL | 78   | 6331800PL | 84   | 6TI24     | 38   |
| 5101600PL | 68   | 6050400PL | 76   | 6194200PL | 78   | 6332000PL | 84   | 6TI58     | 38   |
| 5101800EG | 68   | 6050500PL | 76   | 6200250PL | 78   | 6332400PL | 84   | 6TI912    | 38   |
| 5101800PL | 68   | 6050600PL | 76   | 6200300PL | 78   | 6340200PL | 85   | 6TIB      | 38   |
| 5102000EG | 68   | 6050800PL | 76   | 6200350PL | 78   | 6340250PL | 85   | 6TIO      | 38   |
| 5102000PL | 68   | 6051000PL | 76   | 6200400PL | 78   | 6340300PL | 85   | 7000050PL | 89   |
| 5102400EG | 68   | 6051200PL | 76   | 6200500PL | 78   | 6340350PL | 85   | 7000075PL | 89   |
| 5102400PL | 68   | 6051400PL | 76   | 6200600PL | 78   | 6340500PL | 85   | 7000100PL | 89   |
| 5110050CP | 69   | 6051600PL | 76   | 6200800PL | 78   | 6340800PL | 85   | 7000125PL | 89   |

# Index

| Part No.  | Page | Part No.    | Page | Part No.   | Page | Part No.       | Page | Part No.        | Page |
|-----------|------|-------------|------|------------|------|----------------|------|-----------------|------|
| 7000150PL | 89   | 7220800PL   | 91   | 812M58     | 40   | MSR24          | 39   | TP2201250200PL  | 96   |
| 7000200PL | 89   | 7221000PL   | 91   | 812M912    | 40   | MSR58          | 39   | TP2201250250PL  | 96   |
| 7000250PL | 89   | 7230250PL   | 92   | 812MCP     | 39   | MSR912         | 39   | TP2201250300PL  | 96   |
| 7000300PL | 89   | 7230300PL   | 92   | 812MCP24   | 40   | MSS24          | 39   | TP2201250400PL  | 96   |
| 7000400PL | 89   | 7230350PL   | 92   | 812MCP58   | 40   | MSS58          | 39   | TP2201250500PL  | 96   |
| 7000500PL | 89   | 7230400PL   | 92   | 812MCP912  | 40   | MSS912         | 39   | TP2201250600PL  | 96   |
| 7000600PL | 89   | 7230500PL   | 92   | AF144TI    | 38   | PA10050EG      | 100  | TP2201250800PL  | 96   |
| 7000800PL | 89   | 7230600PL   | 92   | AF146TI    | 38   | PA10062EG      | 100  | TP225100PL      | 97   |
| 7050050PL | 89   | 7230800PL   | 92   | BC260025EG | 16   | PA10087EG      | 100  | TP225125PL      | 97   |
| 7050075PL | 89   | 7231000PL   | 92   | CD0B       | 41   | PA10100EG      | 100  | TP225A000PL     | 97   |
| 7050100PL | 89   | 7231200PL   | 92   | CD0B37     | 41   | PA10125EG      | 100  | TP225G100PL     | 97   |
| 7050125PL | 89   | 7231400PL   | 92   | CD0B37CP   | 41   | PA40050EG      | 101  | TP225G125PL     | 97   |
| 7050150PL | 89   | 7231600PL   | 92   | CD0BCP     | 41   | PA50000EG      | 101  | TP2301000100PL  | 98   |
| 7050200PL | 89   | 7231800PL   | 92   | CD1B       | 41   | PAR0037HD      | 20   | TP2301000125PL  | 98   |
| 7050250PL | 89   | 7232000PL   | 92   | CD1B37     | 41   | PAR0050HD      | 20   | TP2301000150PL  | 98   |
| 7050300PL | 89   | 7232400PL   | 92   | CD1B37CP   | 41   | PAR0075HD      | 20   | TP2301000200PL  | 98   |
| 7050350PL | 89   | 7232600PL   | 92   | CD1BCP     | 41   | PAR0100HD      | 20   | TP2301000250PL  | 98   |
| 7050400PL | 89   | 7233000PL   | 92   | CD2.5B27CP | 41   | PAR0125HD      | 20   | TP2301000300PL  | 98   |
| 7050500PL | 89   | 7233200PL   | 92   | CD2.5BCP   | 41   | PAR0150HD      | 20   | TP2301000400PL  | 98   |
| 7050600PL | 89   | 7233600PL   | 92   | CD2B       | 41   | PAR0200HD      | 20   | TP2301000500PL  | 98   |
| 7050800PL | 89   | 7240250PL   | 93   | CD2B37     | 41   | PAR0250HD      | 20   | TP2301000600PL  | 98   |
| 7200250PL | 90   | 7240300PL   | 93   | CD2B37CP   | 41   | PAR0300HD      | 20   | TP2301000800PL  | 98   |
| 7200300PL | 90   | 7240350PL   | 93   | CD2BCP     | 41   | PAR0350HD      | 20   | TP2301250125PL  | 98   |
| 7200400PL | 90   | 7240400PL   | 93   | CD3B       | 41   | PAR0400HD      | 20   | TP2301250150PL  | 98   |
| 7200500PL | 90   | 7240500PL   | 93   | CD3B37     | 41   | PH4            | 20   | TP2301250200PL  | 98   |
| 7200600PL | 90   | 7240600PL   | 93   | CD3B37CP   | 41   | PH6            | 20   | TP2301250250PL  | 98   |
| 7200800PL | 90   | 7240800PL   | 93   | CD3BCP     | 41   | PH6FP‡         | 20   | TP2301250300PL  | 98   |
| 7201000PL | 90   | 7241000PL   | 93   | CD4B       | 41   | PHSW4          | 20   | TP2301250400PL  | 98   |
| 7201200PL | 90   | 7241200PL   | 93   | CD4B37     | 41   | PHSW6          | 20   | TP2301250500PL  | 98   |
| 7201400PL | 90   | 7241400PL   | 93   | CD5B       | 41   | PHSW6FP        | 20   | TP2301250600PL  | 98   |
| 7201600PL | 90   | 7241600PL   | 93   | CD5B37     | 41   | PP150H4        | 95   | TP2301250800PL  | 98   |
| 7201800PL | 90   | 7241800PL   | 93   | CD5B37CP   | 41   | PP300H4        | 95   | TP230G1000600PL | 98   |
| 7202000PL | 90   | 7242000PL   | 93   | CD5BCP     | 41   | PP50H2AH       | 95   | TP230G1000800PL | 98   |
| 7210250PL | 91   | 7242400PL   | 93   | CD6B       | 41   | PP50H4         | 95   | TP230G1250600PL | 98   |
| 7210300PL | 91   | 7242600PL   | 93   | CD7B       | 41   | PP50H6         | 95   | TP230G1250800PL | 98   |
| 7210400PL | 91   | 7243000PL   | 93   | CD8B       | 41   | RAWL3758       | 37   | TP235100PL      | 98   |
| 7210500PL | 91   | 7243200PL   | 93   | CD9B       | 41   | SGB16A         | 105  | TP235125PL      | 98   |
| 7210600PL | 91   | 7243600PL   | 93   | ESG1       | 106  | SGB24A         | 105  | TP2401000100EG  | 99   |
| 7210800PL | 91   | 800037050EP | 94   | ESG1M      | 106  | SO12A          | 25   | TP2401000100PL  | 99   |
| 7211000PL | 91   | 800050075EP | 94   | ESGP       | 106  | SO16A          | 25   | TP2401000125EG  | 99   |
| 7211200PL | 91   | 800075100EP | 94   | ESGPM      | 106  | SO20A          | 25   | TP2401000125PL  | 99   |
| 7211400PL | 91   | 800100125EP | 94   | HMZE200    | 37   | SO24A          | 25   | TP2800100PL     | 99   |
| 7211600PL | 91   | 801000200EP | 94   | HMZE215    | 37   | SO32A          | 25   | TP280P0100PL    | 99   |
| 7211800PL | 91   | 801037050EP | 94   | HMZE220    | 37   | STCB6          | 14   | TPC112          | 104  |
| 7212000PL | 91   | 801050075EP | 94   | HMZE230    | 37   | TP2201000125PL | 96   | TPC238          | 104  |
| 7212400PL | 91   | 801075100EP | 94   | HMZE380    | 37   | TP2201000150PL | 96   | TSGB16          | 105  |
| 7212600PL | 91   | 801100125EP | 94   | HMZG471    | 37   | TP2201000200PL | 96   | TSGB16112       | 104  |
| 7213000PL | 91   | 801125150EP | 94   | HMZG550    | 37   | TP2201000250PL | 96   | TSGB24          | 105  |
| 7213200PL | 91   | 801150000EP | 94   | HMZG660    | 37   | TP2201000300PL | 96   | TSGB24112       | 104  |
| 7213600PL | 91   | 801200000EP | 94   | HMZG730    | 37   | TP2201000400PL | 96   | VAFT            | 38   |
| 7220400PL | 91   | 802037050EP | 94   | HMZH455    | 37   | TP2201000500PL | 96   | VF144TI         | 38   |
| 7220600PL | 91   | 802050075EP | 94   | HMZH475    | 37   | TP2201000600PL | 96   | VF146TI         | 38   |
|           |      | 802075100EP | 94   | HMZH476    | 37   | TP2201000800PL | 96   | VS0050EG        | 101  |
|           |      | 812M        | 39   | HMZH665    | 37   | TP2201250125PL | 96   | VTR#11000       | 52   |
|           |      | 812M24      | 40   | MSP20      | 106  | TP2201250150PL | 96   | VTR#21000       | 52   |

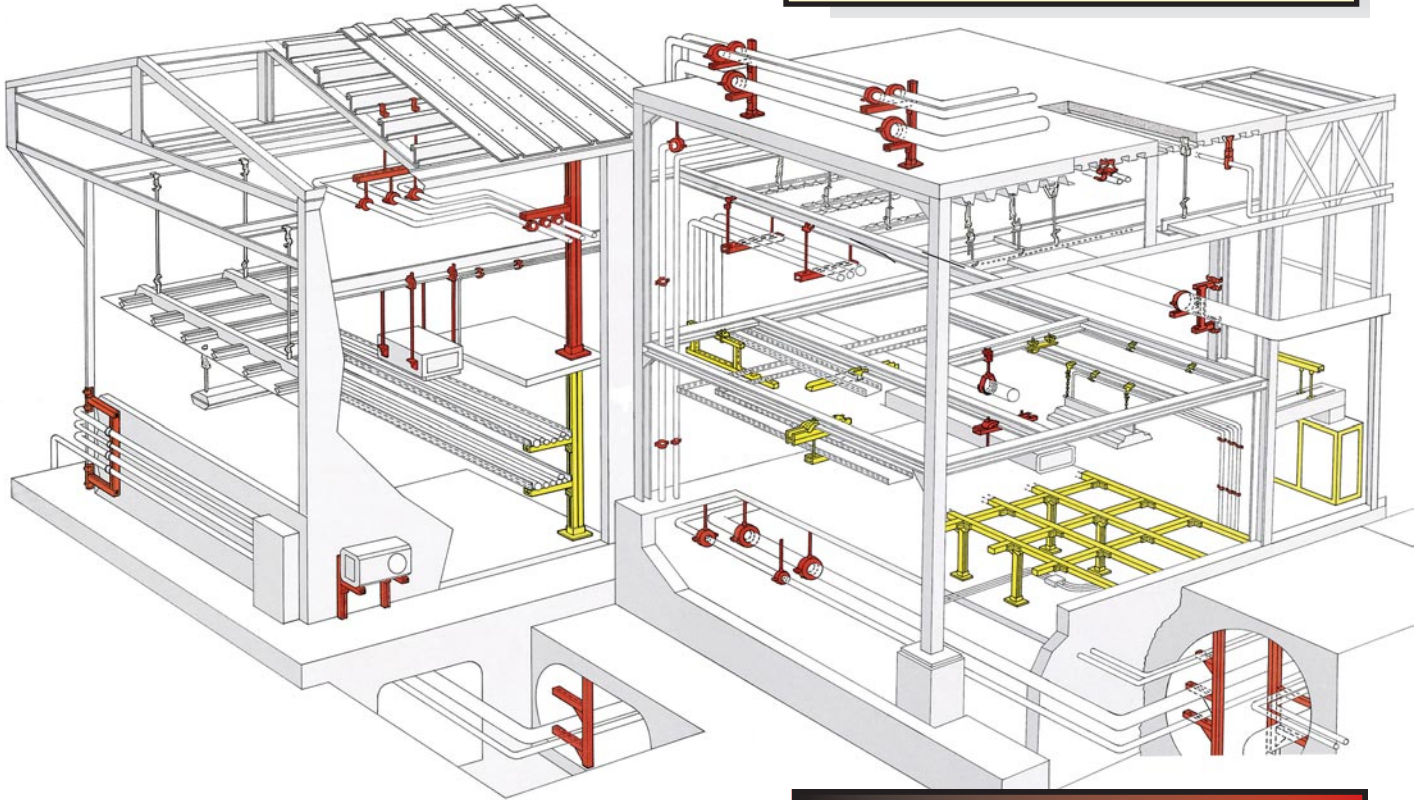


## MECHANICAL/INDUSTRIAL

A comprehensive line of hangers and strut support systems for commercial and industrial applications, including HVAC and process piping.

## ELECTRICAL

The CADDY line of telecommunications and electrical fasteners provides cost-effective and time-saving solutions for the commercial, industrial and residential markets. CADDY Fasteners are used with conduit, cable, beam purlin, strut, hanger (rod, wire, strap), stud wall, drywall and telecommunication devices.



### PROVEN BRANDS

**CADDY<sup>®</sup>**  
**ERISTRUT**



## PLUMBING

For incoming domestic water and outgoing waste water/sewage systems, a variety of hangers, beam clamps and seismic braces are available for the commercial and industrial markets.

## FIRE PROTECTION

A complete line of hangers, beam clamps, straps and seismic supports for the installation of fire sprinkler systems in commercial, industrial and residential markets.

**Fastening Products**  
Mechanical Division Customer Service  
Phone: 800-333-0852 • Fax: 800-677-5403  
[www.erico.com](http://www.erico.com)

**ERICO<sup>®</sup>**



www.erico.com



#### AUSTRALIA

6 Chilvers Road  
P.O. Box 148  
Thornleigh (Sydney) NSW 2120  
Australia  
Tel. 61-2-9479-8500  
Fax 61-2-9484-9188



#### HONG KONG

Unit 1, 2nd Floor, Block A  
Po Yip Building  
62-70 Texaco Road  
Tsuen Wan, New Territories  
Hong Kong  
Tel. 852-2764-8808  
Fax 852-2764-4486



#### SINGAPORE

16 Wan Lee Road  
Jurong Industrial Estate  
Singapore 627946  
Tel. 65-6-268-3433  
Fax 65-6-268-1389



#### BELGIUM

Lambroekstraat 5A  
B-1831 Diegem  
Belgium  
Tel. 32-14-69-96-88  
Fax 32-14-69-96-90



#### HUNGARY

Ceglédi út 1-3  
1107 Budapest  
Hungary  
Tel. 36-1-431-3464  
Fax 36-1-431-3471



#### SPAIN

C/ Provenza 288, Pral.  
08008 Barcelona  
Spain  
Tel. 34-93-467-7726  
Fax 34-93-467-7725



#### BRAZIL

Rua D. Pedro Henrique de Orleans  
E Braganca, 276  
Vila Jaguara CEP 05117-000  
Sao Paulo  
Brazil  
Tel. 55-11-3621-4111  
Fax 55-11-3621-4066



#### INDONESIA

Wisma Danamon Aetna Life, 19th Floor  
Jalan Jend. Sudirman Kav. 45-46  
Jakarta 12930  
Indonesia  
Tel. 62-21-575-0941  
Fax 62-21-575-0942



#### SWEDEN

Carlsgatan 12 A  
SE-211 20 Malmö  
Sweden  
Tel. 46-40-611-1360  
Fax 46-40-611-9415



#### CANADA

34600 Solon Road  
Solon, Ohio 44139  
U.S.A.  
Tel. 1-800-677-9089  
Fax 1-800-677-8131



#### ITALY

Via Pavia 69  
15100 Alessandria  
Italy  
Tel. 39-01-3122-2054  
Fax 39-01-3122-2879



#### SWITZERLAND

Pra Pury 7d  
3280 Murten  
Switzerland  
Tel. 41-26-672-9999  
Fax 41-26-672-9998



#### CHILE

Alcantara 200, piso 6 Of. 17  
Las Condes, Santiago  
Chile  
Tel. 56-2-370-2908  
Fax 56-2-370-2914



#### MEXICO

Melchor Ocampo 193  
Torre A piso 13  
Col. Verónica Anzures  
11300 Mexico D.F.  
Mexico  
Tel. 52-55-5260-5991  
Fax 52-55-5260-3310



#### THAILAND

Level 23, M. Thai Tower, All Seasons Place  
87 Wireless Road  
Pathumwan, Bangkok 10330  
Thailand  
Tel. 66-2-627-9037  
Fax 66-2-627-9168



#### DENMARK

Carlsgatan 12 A  
SE-211 20 Malmö  
Sweden  
Tel. 45-46-19-1941  
Fax 45-46-19-1942



#### NETHERLANDS

Postbus 487  
NL - 5000 AL Tilburg  
Netherlands  
Tel. 31-13-583-5400  
Fax 31-13-583-5499



#### TURKEY

Insaat Malzemeleri, Perpa Ticaret Merkezi  
B Blok, 5 Kat, 5. Cadde. No. 297  
Istanbul 80270  
Turkey  
Tel. 90-212-210-0825  
Fax 90-212-210-0827



#### FRANCE

Rue Benoit Fourneyron Z.I. Sud  
Boite Postale 31  
42161 Andrezieux Cedex  
France  
Tel. 33-4-7736-5656  
Fax 33-4-7755-3789



#### NORWAY

Postboks 148  
NO-1325 Lysaker  
Norway  
Tel. 47-67-53-1200  
Fax 47-67-12-4268



#### UNITED KINGDOM

52 Milford Road  
Reading, Berkshire RG1 8LJ  
United Kingdom  
Tel. 44-118-958-8386  
Fax 44-118-959-4856



#### GERMANY

D-66851 Schwandenmuehle  
Germany  
Tel. 49-6307-918-10  
Fax 49-6307-918-150



#### POLAND

54-613 Wrocław  
ul. Krzemienińska 17  
Poland  
Tel. 48-71-357-4827  
Fax 48-71-374-4043



#### UNITED STATES

34600 Solon Road  
Solon, Ohio 44139  
U.S.A.  
Tel. 1-440-248-0100  
Fax 1-440-248-0723