



Model SW56 Model SW56 Recessed Model SWC56 Concealed

Quick Response Horizontal Sidewall Sprinkler 300 psi (20,7 bar) Rated

Features:

1. Deflector to ceiling dimensions are:
4" (102mm) min. to 12" (305mm) max.
Minimum spacing between sprinklers
- 6 feet (2.4m).
2. UL Listed for light & ordinary hazard
applications.
3. No exposed thermal element with the
concealed version. Tamper resistant
cover plate can prevent the sprinkler from
being used for unintended purposes.
4. 5.6 K Factor.
5. Sprinkler is approved for
300 psi (20,7 bar) applications.
6. Quick response performance.
7. FP push-on/thread-off or standard friction
fit F2 escutcheon.
8. Factory assembled sprinkler & cup,
shipped complete with protective cap.
9. Sprinkler & cup assembly and escutch-
eon or cover are separately packaged.
10. 1/2" (13mm) adjustment of both escutch-
eons and cover.
11. Cover available in standard white paint,
special bronze, black paint or flat white
finishes.

Approval Organizations

- Listed by Underwriters Laboratories Inc. and
UL certified for Canada (cULus)
- NYC MEA 258-93E

Products Description

Models SW56, SW56 Recessed and SWC56 Concealed are quick response type sprinklers. Model SW56 Recessed and SWC56 assemblies utilize the push-on / thread-off escutcheon and cover-plate, respectively. These assemblies are shipped with a protective cap. Remove cap to enable mounting the SW56 sprinkler/cup assembly in place and then push or thread the escutcheon or cover-plate into the installed sprinkler/cup assembly. When the SW56 is ordered with the F2 escutcheon the sprinkler and escutcheon assembly are shipped separately. The sprinkler and collar must be

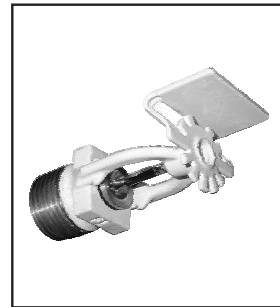


Fig. 1 - SW56

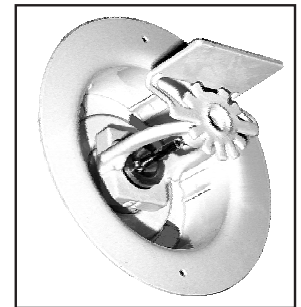


Fig. 2a - SW56 Recessed
FP Escutcheon

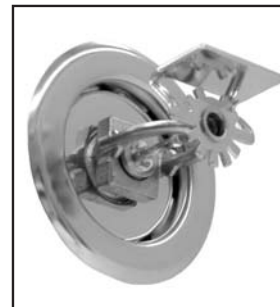


Fig. 2b - SW56 Recessed
F2 Escutcheon

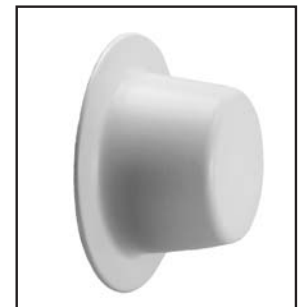


Fig. 3 - SWC56 Concealed

assembled together before the sprinkler can be installed in a fitting.

The SWC56 sprinkler's cover is attached to its skirt using 135°F (57°C) ordinary temperature classification solder. When the ambient temperature rises, the solder holding the cover-plate melts, allowing the release of this part and thus exposing the sprinkler inside to the rising ambient temperature.

The Model SW56 utilizes a 3.0mm frangible glass bulb. This allows quick response which enables the sprinkler to apply water to a fire sooner than standard sprinklers of the same temperature rating.

Application and Installation

The Model SW56 sprinkler is intended for installation in light & ordinary hazard occupancies in accordance with NFPA 13. This sprinkler is especially well-suited for use in student dormitories, hotels, hospitals and care facilities, and

can be used where the pressure entering the sprinkler system calls for 300 psi (20,7 bar) applications.

Models SW56 recessed and SWC56 concealed sprinklers utilize a threaded cup which is factory attached to the sprinkler. The assembly is completed by the installation of the attractive push-on/thread-off escutcheon and 135°F (57°C) rated push-on/thread-off cover, respectively. When the SW56 is ordered with the F2 escutcheon the escutcheon assembly is shipped separately and requires assembly of the collar at the time of installation (Ref. Figure 4).

Apply a Teflon*-based thread sealant to the sprinkler threads. After a 2⁵/₈" (67mm) diameter hole is cut in the wall, the sprinkler is easily installed with the Model GFR1 Wrench. To install the sprinkler, remove the protective cap and then position the wrench into the sprinkler/cup assembly until the wrench fully engages the flats of the sprinkler. Then tighten the sprinkler into the pipe fitting. When inserting or removing the wrench from the sprinkler/cup assembly, care should be taken to prevent damage to the sprinkler. **DO NOT WRENCH ON ANY OTHER PART OF THE SPRINKLER.**

Protective plastic caps must be replaced on sprinklers after they are installed and must remain on sprinklers until covers or escutcheons are installed. The escutcheon or cover-plate assembly is installed by either pushing or threading into the cup. FP escutcheons and cover assemblies provide 1/2" (13mm) of adjustment. Final adjustment is made by turning clockwise until the flange makes full contact with the wall surface. Escutcheon or cover removal requires turning in the counter-clockwise direction.

Covers and recessed escutcheons described in this bulletin are listed only for use with specific sprinklers. The use of any other cover or escutcheon, with the Model SW56 Horizontal Sidewall Sprinkler or the use of the cover assembly or escutcheons on any sprinkler with which they are not specifically listed will void all guarantees, warranties, listings and approvals.

When installing SW 56 sprinklers with raised escutcheons use a Model D wrench. The protective plastic wraps on these sprinklers should remain on them throughout the installation. When the sprinkler system is placed in service, the wraps must be removed.

Maintenance

Models SW56, SW56 recessed and SWC56 concealed sprinklers should be inspected quarterly and the sprinkler maintained in accordance with NFPA 25. Do not clean sprinklers with soap and water, ammonia or any other cleaning fluids. Remove dust by using a soft brush or gentle vacuuming. Remove any sprinkler/cover assembly, which has been painted (other than factory applied) or damaged in any way. A stock of spare sprinklers should be maintained to allow quick replacement of damaged or operated sprinklers. Prior to installation, sprinklers should be maintained in their original cartons and packaging until used to minimize the potential for damage to sprinklers that would cause improper operation or non-operation.

Model SW56 Quick Response Standard Coverage Horizontal Sidewall Sprinkler Specification

Sprinklers shall be a [quick response – cULus Listed] [quick response - New York City MEA Approved (258-93-E)] standard coverage horizontal sidewall sprinkler for light hazard and ordinary hazard applications. Sprinklers to be of bronze frame construction with HSW-1A deflector. Water seal assembly shall consist of a Teflon-coated Belleville spring washer and machined brass cup with 3 mm glass bulb containing no plastic parts. Installation shall permit sprinkler deflectors to be positioned 4 " to 12" below the ceiling. Sprinklers shall have a nominal K-factor of 5.6 (80.0), and 1/2" NPT thread. Sprinkler temperature rating shall be 155°F (68°C). Rated working pressure shall be 300 psi (20.7 bar). Standard finish: [White] [Special finish– specify]. Quick response horizontal sidewall sprinklers shall be Reliable Model SW56, SIN R6834 (Bulletin 168).

Technical Data:

K Factor		Thread Size	Temperature Rating		Maximum Ambient Temperature	Sprinkler Identification Number (SIN)
US	Metric		Sprinkler	Cover		
5.6	80	1/2"	155°F (68°C) 135°F (57°C)	135°F (57°C)	100°F (38°C)	R6834

Approval Type

- Quick Response, Standard Coverage.
- Approved for installation in accordance with NFPA 13 for Light and Ordinary hazard occupancies.

* DuPont Registered Trademark

UL Listing Category

Sprinklers, Automatic and Open.
Quick Response Sprinklers.

Installation Wrench
Model GFR1 Sprinkler Wrench⁽¹⁾
Model D Sprinkler Wrench⁽²⁾

Installation Aid

A protective plastic cap is included for use during installation.

Escutcheon Data:

FP cup/escutcheon assembly - $\frac{1}{2}$ " (13mm) adjustment.

F2 collar & escutcheon $\frac{1}{2}$ " (13mm) adjustment

⁽¹⁾ Use with SW56 Recessed & SWC 56.

⁽²⁾ Use with SW56 (Fig. 1).

Ordering Information

Specify:

- SW56
- Sprinkler Finish
- SW56 Recessed
-Sprinkler Finish
-Escutcheon Finish
- SWC56 Concealed
-Cover Plate Finish

Finishes⁽¹⁾

Standard Finishes		
Sprinkler	FP Escutcheon	Cover Plate
White	White Chrome	White
Special Application Finishes		
Sprinkler	FP Escutcheon	Cover Plate
Bronze Black Paint Flat White Paint	Chrome Black Paint	Bronze Black Paint Flat White Paint

⁽¹⁾ Other colors and finishes are available. Consult factory for details.

Note: Paint or any other coatings applied over the factory finish will void all approvals and warranties.

Patents: U.S. No. 6,374,919 Applies to SWC 56 Sprinklers

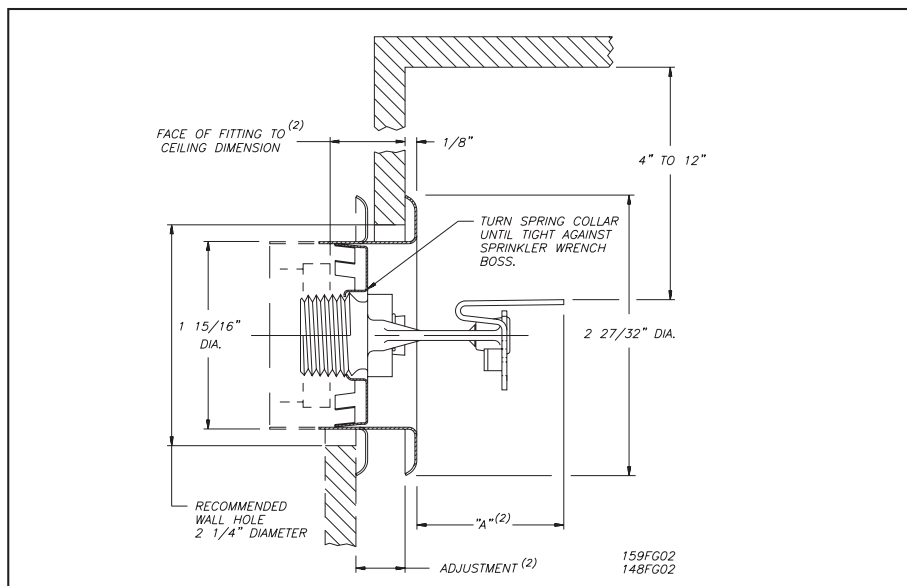
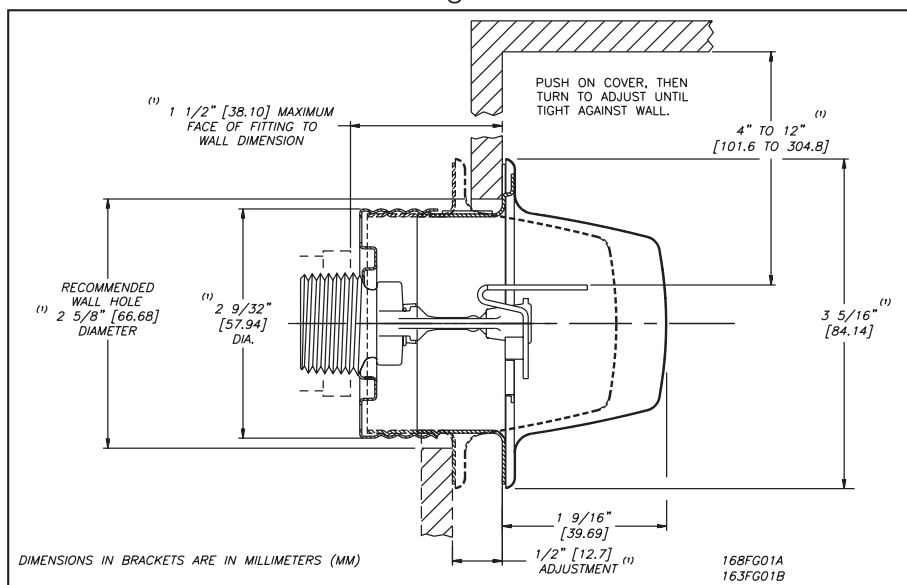


Fig. 4



⁽¹⁾ Dimensions are common for SW56 Recessed sprinkler and SWC56 Concealed sprinkler

Fig. 5

Reliable...For Complete Protection

Reliable offers a wide selection of sprinkler components. Following are some of the many precision-made Reliable products that guard life and property from fire around the clock.

- Automatic sprinklers
- Flush automatic sprinklers
- Recessed automatic sprinklers
- Concealed automatic sprinklers
- Adjustable automatic sprinklers
- Dry automatic sprinklers
- Intermediate level sprinklers
- Open sprinklers
- Spray nozzles
- Alarm valves
- Retarding chambers
- Dry pipe valves
- Accelerators for dry pipe valves
- Mechanical sprinkler alarms
- Electrical sprinkler alarm switches
- Water flow detectors
- Deluge valves
- Detector check valves
- Check valves
- Supertrol electrical system
- Sprinkler emergency cabinets
- Sprinkler wrenches
- Sprinkler escutcheons and guards
- Inspectors test connections
- Sight drains
- Ball drips and drum drips
- Control valve seals
- Air maintenance devices
- Air compressors
- Pressure gauges
- Identification signs
- Fire department connection

The equipment presented in this bulletin is to be installed in accordance with the latest pertinent Standards of the National Fire Protection Association, Factory Mutual Research Corporation, or other similar organizations and also with the provisions of governmental codes or ordinances whenever applicable.

Products manufactured and distributed by Reliable have been protecting life and property for over 80 years, and are installed and serviced by the most highly qualified and reputable sprinkler contractors located throughout the United States, Canada and foreign countries.

Manufactured by

Reliable[®]

The Reliable Automatic Sprinkler Co., Inc.

(800) 431-1588
(800) 848-6051
(914) 829-2042
www.reliablesprinkler.com

Sales Offices
Sales Fax
Corporate Offices
Internet Address



Revision lines indicate updated or new data.

E.G. Printed in U.S.A. 2/07 P/N 9999970224