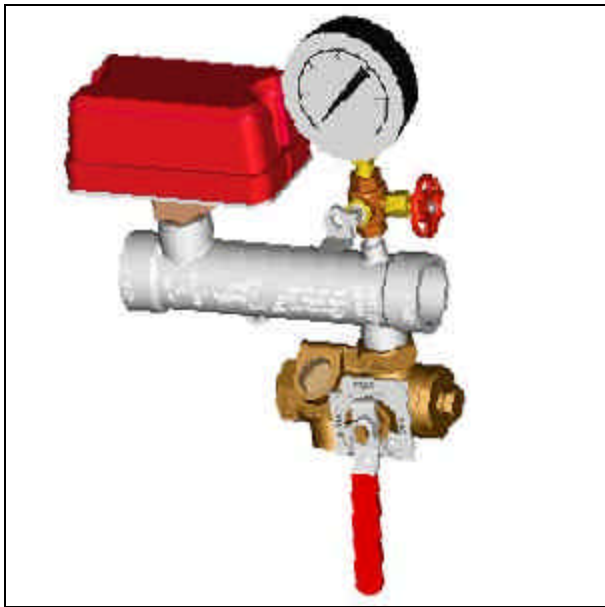


2 New Products for your fire protection needs

The New Floor Control and Commercial Riser Manifolds



Floor Control Valve



Commercial Riser

Features

- 1-1/2" (40mm) - 8" (200mm) available in June 2004
- 1-1/2" (40mm) & 2" (50mm) threaded, 2" (50mm) - 8" (200mm) grooved both ends
- cULus Listed and FM Approved
- 300 psi (20,7 bar) rated for grooved manifolds, 250 psi (17,2 bar) for threaded
- Configurations for test & drain, pressure relief, etc.
- MTO in 14 days or less
- Packaged to provide component protection
- For more information, refer to Bulletin 615