



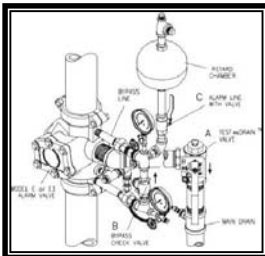
Model E1  
Grooved x Flanged



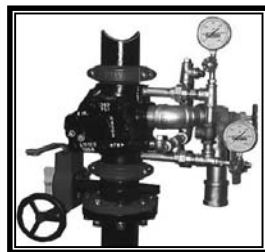
Model E1  
Flanged x Flanged



Model E3  
Grooved x Grooved



Model E3 With Trim  
With TestAnDrain™



Model E3 With Trim  
Without TestAnDrain™

### ALARM VALVES

- See Bulletins 407, 417, 408, 418, 409, 410

| Part Number   |                   | New E3            |              | List Price  |
|---|-------------------|-------------------|--------------|-------------|
| Flanged x Flanged   | Flanged x Grooved | Grooved x Grooved | Size         |             |
| <b>NEW MODEL E3 HIGH PRESSURE VALVE OR MODEL E VALVE</b>    |                   |                   |              |             |
| 25A   | —                 | —                 | 2-1/2"       | \$ 1,469.00 |
| 3A  | 3AG               | —                 | 3"           | \$ 1,469.00 |
| 4A  | 4AG               | 4AGG              | 4" (100mm)   | \$ 1,469.00 |
| 6A  | 6AG               | 6AGG              | 6" (150mm)   | \$ 1,806.00 |
| 8A  | 8AG               | 8AGG              | 8" (200mm)   | \$ 2,632.00 |
| <b>NEW MODEL E3 HIGH PRESSURE VALVE OR E METRIC FLANGED</b> |                   |                   |              |             |
| 65MMA   | —                 | —                 | 65MM Metric  | \$ 1,469.00 |
| 100MMA  | —                 | —                 | 100MM Metric | \$ 1,469.00 |
| 150MMA  | —                 | —                 | 150MM Metric | \$ 1,806.00 |
| —   | —                 | 6102065518        | 165MM Metric | \$ 1,806.00 |
| 200MMA  | —                 | —                 | 200MM Metric | \$ 2,632.00 |

| Open   | Closed  | Description  | List Price  |
|--|---------|--|-------------|
| <b>NEW MODEL E3 GALVANIZED TRIM (ONLY) — PREASSEMBLED*</b> |         |  |             |
| —  | 4E3P    | Vertical — 4", 6", 165mm                               | \$ 1,165.00 |
| —  | 8E3P    | Vertical — 8"  | \$ 1,165.00 |
| —  | 4E3HP   | Horizontal — 4", 6", 165mm                             | \$ 1,188.00 |
| —  | 8E3HP   | Horizontal — 8"  | \$ 1,188.00 |
| —  | 4E3TDP  | Vertical — 4", 6", 165mm (W/ Test And Drain)**         | \$ 2,064.00 |
| —  | 8E3TDP  | Vertical — 8" (W/ Test And Drain)                      | \$ 2,064.00 |
| —  | 4E3HTDP | Horizontal — 4", 6", 165mm (W/ Test And Drain)**       | \$ 2,087.00 |
| —  | 8E3HTDP | Horizontal — 8" (W/ Test And Drain)                    | \$ 2,087.00 |
| —  | OPEN    | Optional Open Drain Kit (See Table Below)              | \$ 263.00   |
| —  | E3PR    | Optional E3 Pressure Relief Trim Kit (See Table Below) | \$ 319.00   |
| <b>NEW MODEL E3 GALVANIZED TRIM (ONLY) — LOOSE</b>         |         |  |             |
| —  | 4E3L    | Vertical — 4", 6", 165mm                               | \$ 950.00   |
| —  | 8E3L    | Vertical — 8"  | \$ 950.00   |
| —  | 4E3TDL  | Vertical — 4", 6", 165mm (W/ Test And Drain)**         | \$ 1,849.00 |
| —  | 8E3TDL  | Vertical — 8" (W/ Test And Drain)**                    | \$ 1,849.00 |
| —  | 4E3HL   | Horizontal — 4", 6", 165mm                             | \$ 973.00   |
| —  | 8E3HL   | Horizontal — 8"  | \$ 973.00   |
| —  | 4E3HTDL | Horizontal — 4", 6", 165mm (W/ Test And Drain)**       | \$ 1,872.00 |
| —  | 8E3HTDL | Horizontal — 8" (W/ Test And Drain)**                  | \$ 1,872.00 |
| —  | OPEN    | Optional Open Drain Kit (See Table Below)              | \$ 263.00   |
| —  | E3PR    | Optional E3 Pressure Relief Trim Kit (See Table Below) | \$ 319.00   |
| <b>E1 TRIM (ONLY) PREASSEMBLED* OR LOOSE</b>               |         |  |             |
| —  | 3TPO    | 3TPO   | \$ 1,165.00 |
| —  | 3TCG    | 3TCG   | \$ 950.00   |

\* Order Retard Chamber & Mechanical Sprinkler Alarm Separately

### Open Trim Includes:

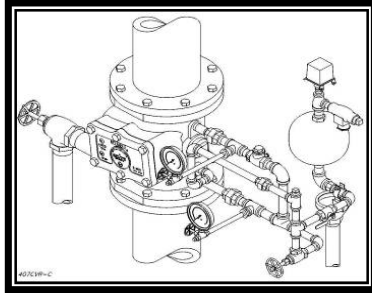
| Item | P/N      | Description                    | Units |
|------|----------|--------------------------------|-------|
| 1    | 75000050 | Priming Cup, 1/2" NPT          | 1     |
| 2    | 98543212 | Nipple, Pipe, Galv. 1/2" Close | 2     |
| 3    | 98840181 | Valve, Check Swing 1/2"        | 1     |
| 4    | 98174401 | Elbow, Galv. 1/2" NPT          | 1     |
| 5    | 98543209 | Nipple, Pipe Galv. 1/2" x 2"   | 1     |
| 6    | 96606623 | Tee, Galv. 2" x 2" x 1/2"      | 1     |
| 7    | 98543291 | Nipple, Pipe, Galv. 2" x 10"   | 1     |

### Pressure Relief Trim Kit Includes:

| Item | P/N      | Description                        | Units |
|------|----------|------------------------------------|-------|
| 1    | 98840194 | Relief Valve, 1/2", 175 psig       | 1     |
| 2    | 98543212 | Nipple, Pipe Galv. 1/2" Close      | 1     |
| 3    | 96920925 | Flex Line, Steel, 3/8" x 20"       | 1     |
| 4    | 98048022 | Bushing Reducer, Galv. 1/2" x 3/4" | 1     |
| 5    | 95086903 | Tee, Male Branch, 3/8" x 1/4 NPT   | 1     |

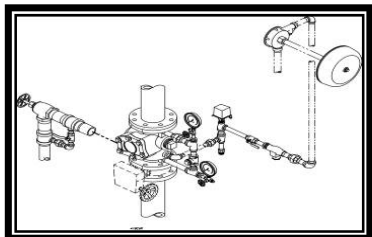
\*\*Test And Drain Valve, with optional Pressure Relief, exercises the Clapper with Alarm Test.

Functions like the Inspector's Test Port with greater convenience.



## ALARM VALVES

- See Bulletins 407, 417, 408, 418



## LPC VALVE SETS

### Valve Stations complete

- Valve
- Trim (Segmented)
- Butterfly Valve

| Description                                      | Part Number | List Price  |
|--|-------------|-------------|
| <b>FULLY ASSEMBLED VALVE (FLANGED X FLANGED)</b> |             |             |
| 2-1/2" Factory Trimmed                           | 25AFTO      | \$ 3,528.00 |
| 3" Factory Trimmed                               | 3AFTO       | \$ 3,328.00 |
| 4" Factory Trimmed                               | 4AFT        | \$ 3,328.00 |
| 6" Factory Trimmed                               | 6AFT        | \$ 3,651.00 |
| 8" Factory Trimmed                               | 8AFT        | \$ 4,509.00 |
| <b>FULLY ASSEMBLED VALVE (FLANGED X GROOVED)</b> |             |             |
| 3" Factory Trimmed                               | 3AGFTO      | \$ 3,328.00 |
| 4" Factory Trimmed                               | 4AGFT       | \$ 3,328.00 |
| 6" Factory Trimmed                               | 6AGFT       | \$ 3,651.00 |
| 8" Factory Trimmed                               | 8AGFT       | \$ 4,509.00 |
| <b>FULLY ASSEMBLED VALVE (GROOVED X GROOVED)</b> |             |             |
| 4" Factory Trimmed                               | 4AGGFT      | \$ 3,328.00 |
| 6" Factory Trimmed                               | 6AGGFT      | \$ 3,651.00 |
| 8" Factory Trimmed                               | 8AGGFT      | \$ 4,509.00 |

| Description                           | Part Number | List Price  |
|---------------------------------------|-------------|-------------|
| <b>WET TRIM WITH RETARD</b>           |             |             |
| 100mm                                 | 6503004210  | \$ 3,951.97 |
| 150mm                                 | 6503004215  | \$ 4,590.04 |
| 200mm                                 | 6503004220  | \$ 5,763.30 |
| <b>WET TRIM WITHOUT RETARD</b>        |             |             |
| 100mm                                 | 6503004100  | \$ 3,663.81 |
| 150mm                                 | 6503004115  | \$ 4,301.88 |
| 200mm                                 | 6503004120  | \$ 5,475.11 |
| <b>WET/DRY TRIM WITH RETARD</b>       |             |             |
| 100mm                                 | 6503004410  | \$ 8,006.87 |
| 150mm                                 | 6503004415  | \$ 9,365.37 |
| <b>WET/DRY TRIM WITHOUT RETARD</b>    |             |             |
| 100mm                                 | 6503004310  | \$ 7,698.10 |
| 150mm                                 | 6503004315  | \$ 9,036.02 |
| <b>LPC VALVE TRIMS PART ASSEMBLED</b> |             |             |
| Wet Trim with Retard                  | 6502070110  | \$ 1,680.38 |
| Wet Trim without Retard               | 6502070100  | \$ 1,378.77 |
| Wet/Dry Trim with Retard              | 6502070010  | \$ 2,692.96 |
| Wet/Dry Trim without Retard           | 6502070000  | \$ 2,348.25 |



C — Mechanical Spk. Alarm

### ALARM VALVES

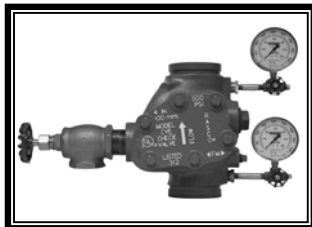
- See Bulletins 407, 417, 408, 418



G Right Check Riser



G Swing Check



CVE Swing Check



DW Swing Check

| Description  | Part Number | List Price  |
|--|-------------|-------------|
| <b>MISCELLANEOUS — ALARM VALVE TRIM</b>                |             |             |
| Constant — 2-1/2" & 3"                                 | 6502054100  | \$ 950.00   |
| Constant — 4", 6" & 8"                                 | 6502053100  | \$ 950.00   |
| Press. Rel. kit — 2-1/2" & 3"                          | 6502050000  | \$ 309.00   |
| Press. Rel. kit — 4", 6" & 8"                          | 6502050000  | \$ 309.00   |
| Galvanized — 2-1/2" & 3"                               | 6502053600  | \$ 1,045.00 |
| Galvanized — 4", 6" & 8"                               | 6502053600  | \$ 1,045.00 |
| <b>RETARD CHAMBER &amp; MECHANICAL SPRINKLER ALARM</b> |             |             |
| Retard Chamber — E-1                                   | RCT         | \$ 584.00   |
| Mech. Sprk. Alarm — C                                  | WM          | \$ 792.00   |
| <b>VALVE SEAT WRENCHES</b>                             |             |             |
| 2" & 3" Model E Alarm Valve                            | W23AV       | \$ 190.00   |
| 4" Model E Alarm Valve                                 | W4DV        | \$ 210.00   |
| 6" Model E Alarm Valve                                 | W6DV        | \$ 225.00   |
| 8" Model E Alarm Valve                                 | W8AV        | \$ 242.00   |

\* Order Retard Chamber & Mechanical Sprinkler Alarm Separately.

| Part Name                                 | Part Number | List Price  |
|---|-------------|-------------|
| <b>MODEL G RISER CHECK</b>                |             |             |
| 2-1/2"                                    | 25RC        | \$ 637.00   |
| 3"  | 3RC         | \$ 637.00   |
| 4"  | 4RC         | \$ 637.00   |
| 6"  | 6RC         | \$ 1,203.00 |
| 2-1/2" & 3" Trim                          | 25RTG       | \$ 431.00   |
| 4" & 6" Trim                              | 4RTG        | \$ 431.00   |
| <b>MODEL G GROOVE/GROOVE CHECK</b>        |             |             |
| 2-1/2"                                    | 25CK        | \$ 441.00   |
| 3"  | 3CK         | \$ 441.00   |
| 4"  | 4CK         | \$ 441.00   |
| 6"  | 6CK         | \$ 1,066.00 |
| <b>SWING CHECK VALVES - VALVES ONLY</b>   |             |             |
| CVE 4" (100mm)                            | 4CVE        | \$ 1,164.28 |
| CVE 6" (150mm)                            | 6CVE        | \$ 1,513.55 |
| CVE 165mm                                 | CVE165MM    | \$ 1,513.55 |
| CVE 8" (200mm)                            | 8CVE        | \$ 2,328.56 |
| DW Wafer (4") - Add per valve             | DW          | \$ 486.00   |
| <b>FULLY ASSEMBLED SWING CHECK VALVES</b> |             |             |
| CVE 4" (100mm)                            | 4CVET       | \$ 1,742.00 |
| CVE 6" (150mm)                            | 6CVET       | \$ 2,090.00 |
| CVE 8" (200mm)                            | 8CVET       | \$ 3,050.47 |
| <b>TRIM FOR SWING CHECK VALVES</b>        |             |             |
| All Sizes                                 | 6506000044  | \$ 1,212.79 |

### CHECK VALVES

- See Bulletins 803, 806, 807, 810