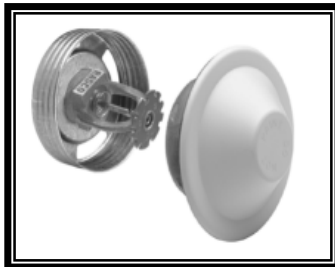




F1RES 30 LL Pendant & Recessed Pendant

- **SIN RA3311**
- **Low Lead Sprinklers**
- For Multipurpose Residential Systems
- See Bulletin 033

NEW



F1RES 30 LL CCP

- **SIN RA3311**
- **Low Lead Sprinklers**
- For Multipurpose Residential Systems
- See Bulletin 033

NEW

Part Number		Temperature	Finish	List Price
F1 RES 30 LL - 1/2" NPT THREADS (15MM)				
30BLL	K Factor = 3.0	155°F 68°C	Bronze	\$ 60.00
30CLL	K Factor = 3.0	155°F 68°C	Chrome	\$ 64.00
30WLL	K Factor = 3.0	155°F 68°C	White	\$ 64.00
30B5LL	K Factor = 3.0	175°F 79°C	Bronze	\$ 60.00
30C5LL	K Factor = 3.0	175°F 79°C	Chrome	\$ 64.00
30W5LL	K Factor = 3.0	175°F 79°C	White	\$ 64.00
RECESSING ESCUTCHEONS				
GF2B	1/2" (15mm)		Brass	\$ 12.94
GF2C	1/2" (15mm)		Chrome	\$ 7.05
GF2W	1/2" (15mm)		White	\$ 7.05
FPC	Push-On Thread Off		Chrome	\$ 13.59
FPW	Push-On Thread Off		White	\$ 13.59

WD	Requires Model D Sprinkler Wrench	\$ 54.00
WGFR	For Recessed Use Model GFR2 Wrench	\$ 207.00

Part Number		Temperature	Finish	List Price
F1RES 30 LL CCP - 1/2" NPT THREADS — SPRINKLER ONLY				
30CCPTLL		155°F 68°C	Bronze	\$ 64.00
REQUIRED COVERPLATES				
CCP0C76	1/2" (15mm)		Chrome	\$ 22.60
CCP0W76	1/2" (15mm)		White	\$ 22.60
CCP0SP76	1/2" (15mm)		Specialty	\$ 37.96
CCP05C76	5/16"		Chrome	\$ 22.60
CCP05W76	5/16"		White	\$ 22.60
CCP05SP76	5/16"		Specialty	\$ 37.96

WGFR	For Recessed Use Model GFR2 Wrench	\$ 207.00
------	------------------------------------	-----------

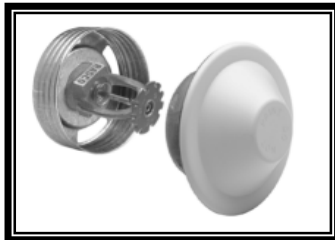
Our LL Residential Sprinklers are cULus Listed and NSF/ANSI 61 annex G Certified



F1RES 49 LL Pendant & Recessed Pendant

- **SIN RA3316**
- **Low Lead Sprinklers**
- For Multipurpose Residential Systems
- See Bulletin 033

NEW



F1RES 49 LL CCP

- **SIN RA3316**
- **Low Lead Sprinklers**
- For Multipurpose Residential Systems
- See Bulletin 033

NEW

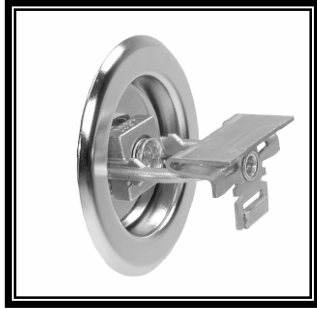
Part Number		Temperature	Finish	List Price
F1 RES 49 LL - 1/2" NPT THREADS (15MM)				
49BLL	K Factor = 4.9	155°F 68°C	Bronze	\$ 60.00
49CLL	K Factor = 4.9	155°F 68°C	Chrome	\$ 64.00
49WLL	K Factor = 4.9	155°F 68°C	White	\$ 64.00
49B5LL	K Factor = 4.9	175°F 79°C	Bronze	\$ 60.00
49C5LL	K Factor = 4.9	175°F 79°C	Chrome	\$ 64.00
49W5LL	K Factor = 4.9	175°F 79°C	White	\$ 64.00
RECESSING ESCUTCHEONS				
GF1B	1/2" (15mm)		Brass	\$ 14.24
GF1C	1/2" (15mm)		Chrome	\$ 7.05
GF1W	1/2" (15mm)		White	\$ 7.05
GF2B	1/2" (15mm)		Brass	\$ 12.94
GF2C	1/2" (15mm)		Chrome	\$ 7.05
GF2W	1/2" (15mm)		White	\$ 7.05
FPC	Push-On Thread Off		Chrome	\$ 13.59
FPW	Push-On Thread Off		White	\$ 13.59

WD	Requires Model D Sprinkler Wrench	\$ 54.00
WGFR	For Recessed Use Model GFR2 Wrench	\$ 207.00

Part Number		Temperature	Finish	List Price
F1RES 49 LL CCP - 1/2" NPT THREADS — SPRINKLER ONLY				
49CCP1LL		155°F 68°C	Bronze	\$ 64.00
REQUIRED COVERPLATES				
CCP0C76	1/2" (15mm)		Chrome	\$ 22.60
CCP0W76	1/2" (15mm)		White	\$ 22.60
CCP0SP76	1/2" (15mm)		Specialty	\$ 37.96
CCP05C76	5/16"		Chrome	\$ 22.60
CCP05W76	5/16"		White	\$ 22.60
CCP05SP76	5/16"		Specialty	\$ 37.96

WGFR	For Recessed Use Model GFR2 Wrench	\$ 207.00
------	------------------------------------	-----------

Our LL Residential Sprinklers are cULus Listed and NSF/ANSI 61 annex G Certified.



F1RES 44 LL HSW & REC HSW

- **SIN RA3331**
- Horizontal Sidewall
- Recessed HSW
- See Bulletin 033



F1RES 44 LL SWC

- **SIN RA3331**
- Sidewall, Concealed
- See Bulletin 033

NEW

Part Number		Temperature		Finish	List Price
F1RES 44 LL HSW - 1/2" NPT THREADS (15MM)					
44BLL	K Factor 4.4	155°F	68°C	Bronze	\$ 62.00
44CLL	K Factor 4.4	155°F	68°C	Chrome	\$ 65.00
44WLL	K Factor 4.4	155°F	68°C	White	\$ 65.00
44B5LL	K Factor 4.4	175°F	79°C	Bronze	\$ 62.00
44C5LL	K Factor 4.4	175°F	79°C	Chrome	\$ 65.00
44W5LL	K Factor 4.4	175°F	79°C	White	\$ 65.00
G/F2 ESCUTCHEONS					
GF2B	1/2" (15mm)			Brass	\$ 12.94
GF2C	1/2" (15mm)			Chrome	\$ 7.05
GF2W	1/2" (15mm)			White	\$ 7.05
FPC	Push-On Thread Off			Chrome	\$ 13.59
FPW	Push-On Thread Off			White	\$ 13.59

Part Number		Temperature		Finish	List Price
F1RES 44 LL SWC 1/2" NPT THREADS (15MM)					
SWC44LL	K Factor 4.4	155°F	68°C	Bronze	\$ 65.00
REQUIRED COVERPLATES (1/2" ADJUSTMENT) FOR SWC					
CHWNS		135°F	57°C	White	\$ 23.37
CHSPNS		135°F	57°C	Specialty	\$ 35.05

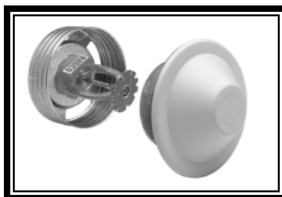
WD	Requires Model D Sprinkler Wrench	\$ 54.00
WGFR	For Recessed & Concealed Use Model GFR1 Wrench	\$ 207.00



F1RES 58 LL Pendant & Recessed Pendant

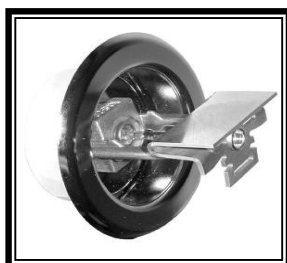
- SIN RA3313
- See Bulletin 033

NEW



F1RES 58 LL CCP

- SIN RA3313
- Residential Concealed
- See Bulletin 033



F1RES 58 LL HSW & REC HSW

- SIN RA3313
- Horizontal Sidewall
- Recessed HSW
- See Bulletin 033

Part Number	Temperature	Finish	List Price
F1 RES 58 LL -- 1/2" NPT THREADS (15MM)			
58P1BLL	K Factor = 5.8 155°F 68°C	Bronze	\$ 60.00
58P1CLL	K Factor = 5.8 155°F 68°C	Chrome	\$ 64.00
58P1WLL	K Factor = 5.8 155°F 68°C	White	\$ 64.00
58P5BLL	K Factor = 5.8 175°F 79°C	Bronze	\$ 60.00
58P5CLL	K Factor = 5.8 175°F 79°C	Chrome	\$ 64.00
58P5WLL	K Factor = 5.8 175°F 79°C	White	\$ 64.00
RECESSING ESCUTCHEONS			
GF1B	1/2" (15mm)	Brass	\$ 14.24
GF1C	1/2" (15mm)	Chrome	\$ 7.05
GF1W	1/2" (15mm)	White	\$ 7.05
GF2B	1/2" (15mm)	Brass	\$ 12.94
GF2C	1/2" (15mm)	Chrome	\$ 7.05
GF2W	1/2" (15mm)	White	\$ 7.05
FPC	Push-On Thread Off	Chrome	\$ 13.59
FPW	Push-On Thread Off	White	\$ 13.59

WD	Requires Model D Sprinkler Wrench	\$ 54.00
WGFR	For Recessed Use Model GFR1 Wrench	\$ 207.00

Part Number	Temperature	Finish	List Price
F1RES 58 LL CCP - 1/2" NPT THREADS — SPRINKLER ONLY			
58CCP1LL	K Factor = 5.8 155°F 68°C	Bronze	\$ 64.00
REQUIRED COVERPLATES			
CCP0C76	1/2" (15mm)	Chrome	\$ 22.60
CCP0W76	1/2" (15mm)	White	\$ 22.60
CCP0SP76	1/2" (15mm)	Specialty	\$ 37.96
CCP05C76	5/16"	Chrome	\$ 22.60
CCP05W76	5/16"	White	\$ 22.60
CCP05SP76	5/16"	Specialty	\$ 37.96

WGFR	Requires Model GFR2 Wrench	\$ 207.00
------	----------------------------	-----------

Part Number	Temperature	Finish	List Price
F1RES 58 LL - 1/2" NPT THREADS (15MM)			
58H1BLL	K Factor = 5.8 155°F 68°C	Bronze	\$ 62.00
58H1CLL	K Factor = 5.8 155°F 68°C	Chrome	\$ 65.00
58H1WLL	K Factor = 5.8 155°F 68°C	White	\$ 65.00
58H5BLL	K Factor = 5.8 175°F 79°C	Bronze	\$ 62.00
58H5CLL	K Factor = 5.8 175°F 79°C	Chrome	\$ 65.00
58H5WLL	K Factor = 5.8 175°F 79°C	White	\$ 65.00
G/F2 ESCUTCHEONS			
GF2B	1/2" (15mm)	Brass	\$ 12.94
GF2C	1/2" (15mm)	Chrome	\$ 7.05
GF2W	1/2" (15mm)	White	\$ 7.05
FPC	Push-On Thread Off	Chrome	\$ 13.59
FPW	Push-On Thread Off	White	\$ 13.59

WD	Requires Model D Sprinkler Wrench	\$ 54.00
WGFR	For Recessed & Concealed Use Model GFR2 Wrench	\$ 207.00



NEW

RFC30 LL Flat Concealed

- **SIN RA3211**
- K Factor = 3.0
- See Bulletin 032

RFC43 LL Flat Concealed

- **SIN RA3212**
- K Factor = 4.3
- See Bulletin 032

RFC49 LL Flat Concealed

- **SIN RA3216**
- K Factor = 4.9
- See Bulletin 032

Part Number	Temperature	Finish	List Price
RFC30 LL - 1/2" NPT THREADS - SPRINKLER ONLY			
RFC30LL	K Factor = 3.0 165°F 74°F	Bronze	\$ 75.00
RFC43 LL - 1/2" NPT THREADS — SPRINKLER ONLY			
RFC43LL	K Factor = 4.3 165°F 74°F	Bronze	\$ 75.00
RFC49 LL- 1/2" NPT THREADS — SPRINKLER ONLY			
RFC49LL	K Factor = 4.9 165°F 74°F	Bronze	\$ 75.00
REQUIRED COVERPLATES			
CRFCW	135°F 57°C	White	\$ 24.94

WFC RFC43 & RFC49 require Model FC Sprinkler Wrench \$ 207.00

Specifically Listed for use in Multi-Purpose Systems that serve both domestic water and fire protection

Features:

- Listed for a minimum of .05 gpm/ft2
- Solder fusible link
- Smooth, aesthetic ceiling profile
- For use in wet pipe systems in accordance with NFPA 13D and 13R, and for use in the residential portion of any occupancy per NFPA 13
- Push-On/Thread-Off cover plate provides 1/2" (13mm) of adjustment
- Can be used for flat and sloped ceilings

Notes:

Other Coverplate Finishes are on Page S-116
(Plated Finishes are not available)

ACCESSORIES

Description	Part Number	List Price
A4 EMERGENCY CABINETS FOR LL RESIDENTIAL SPRINKLERS		
3 Capacity	3CAB	\$ 62.70
6 Capacity	6CAB	\$ 62.70
6 Capacity (Large)	6LCAB	\$ 112.40
12 Capacity	12CAB	\$ 77.80
A3 EMERGENCY CABINETS FOR RECESSED, CONCEALED LL RESIDENTIAL SPRINKLERS		
12 Capacity	A312CAB	\$ 339.30

CABINETS

ESCUTCHEONS

Part Number	Temperature	Finish	List Price
ONE PIECE TYPE - MODEL B 1/2"			
BB	165°F	Bronze	\$ 2.90
BC	165°F	Chrome	\$ 2.00
BW	165°F	White	\$ 2.20
ONE PIECE TYPE - MODEL B 3/4"			
BLB	165°F	Bronze	\$ 3.10
BLC	165°F	Chrome	\$ 2.20
BLW	165°F	White	\$ 2.20
ONE PIECE TYPE - MODEL C 1/2"			
CBB	165°F	Bright Brass	\$ 3.98
CC	165°F	Chrome	\$ 2.11
CW	165°F	White	\$ 2.11
TWO PIECE TYPE - MODEL HB 1/2"			
HBB	165°F	Brass	\$ 5.00
HBC	165°F	Chrome	\$ 4.50
HBW	165°F	White	\$ 4.70
TWO PIECE TYPE - MODEL HB 3/4"			
HBLB	165°F	Brass	\$ 5.20
HBLC	165°F	Chrome	\$ 4.70
HBLW	165°F	White	\$ 5.00
FLUSH ESCUTCHEONS - MODEL B			
BFB	165°F	Brass	\$ 35.10
BFC	165°F	Chrome	\$ 54.43
BFW	165°F	White	\$ 54.43



ESCUTCHEONS

Part Number		Finish	List Price
1/2"	3/4"		
FP PUSH-ON/THREAD-OFF ESCUTCHEONS			
FPC	FPLC	Chrome	\$ 13.59
FPW	FPLW	White	\$ 13.59
G/F1 ESCUTCHEON & COLLAR ASSEMBLY			
GF1B	GF1LB	Brass	\$ 14.24
GF1C	GF1LC	Chrome	\$ 7.05
GF1W	GF1LW	White	\$ 7.05
ESCUTCHEON ONLY			
6800430000		Brass	\$ 9.80
6800400000		Chrome Bright	\$ 4.24
6800440000		White	\$ 4.24
COLLAR ONLY			
6800530000	6800560004	Brass	\$ 7.80
6800500000	6800560001	Chrome Bright	\$ 6.40
6800540000	6800551003	White	\$ 6.40
ESCUTCHEON EXTENDER RING			
EERC		Chrome	\$ 8.97
EERW		White	\$ 9.57
F1 OR F2			
4-1/2"		5-1/2"	
6814002100		Chrome	\$ 8.97
6814001500		White	\$ 9.57
	6814042100	Chrome	\$ 8.97
	6814041500	White	\$ 9.57
FP / G4 / RFC43 / F4FR / CCP / SWC / DH80 / DH56			
6814022100		Chrome	\$ 8.97
6814021800		White	\$ 9.57
	6814032100	Chrome	\$ 8.97
	6814031800	White	\$ 9.57

Part Number		Finish	List Price
1/2"	3/4"		
G/F2 ESCUTCHEON & COLLAR ASSEMBLY			
GF2B	GF2LB	Brass	\$ 12.94
GF2C	GF2LC	Chrome	\$ 7.05
GF2W	GF2LW	White	\$ 7.05
ESCUTCHEON ONLY			
6800730000		Brass	\$ 9.80
6800100000		Chrome	\$ 6.32
6800740000		White	\$ 6.32
COLLAR ONLY			
6800530000	6800560004	Brass	\$ 7.80
6800500000	6800560001	Chrome	\$ 6.40
6800540000	6800551003	White	\$ 6.40

G/F1 for use with SP & HSW Sprinklers

G/F2 for use with SP & HSW Sprinklers

G/F2 for use with SP & HSW Sprinklers



MP LL Multipurpose Residential Riser
• See Bulletin 426

Accessories

Part Name	Size	Part Number	List Price
MP LL MULTIPURPOSE RESIDENTIAL RISER			
Model MP LL	1" (30mm)	1MPLL	\$ 687.00
RISER ACCESSORIES			
Optional Support Bracket Kit		RRB	\$ 67.00

NEW

- Potable-water safe to NSF/ANSI Standard 61 annex G

Part Name	Part Number	List Price
PRESSURE GAUGES		
Water	WATER	\$ 69.20
Air	AIR	\$ 73.98
Air (0-60 oz/in ²)	98248002	\$ 262.07
INSPECTORS TEST CONNECTIONS		
Sight Test Type (Model B)	ISC	\$ 286.00
Blind Test Type (Model A)	IBC	\$ 96.00
AUTOMATIC BALL DRIPS		
1/2" NPT (Female)	78653500	\$ 165.80
3/4" NPT (Female)	78653700	\$ 189.40
MECHANICAL BALL DRIPS		
1/2" NPT (Female)	78653100	\$ 295.90
STRAINER		
3/4" NPT (Female)	78650200	\$ 173.90
MISCELLANEOUS		
Model C Sight Drain 2" NPT (Female)	6863000000	\$ 310.00
Model B Drum Drip Only 3/4" NPT (Female)	71010448	\$ 190.00
Model A Fill Cup 1/2" NPT (Female)	75000050	\$ 89.70
Model A Fill Cup 3/4" NPT (Female)	75000075	\$ 101.50
Model A Control Valve Seal Only	6869800000	\$ 25.00
SIGNS—MODEL A		
Valve Control Sign	6892011000	\$ 12.80
SIGNS—MODEL B		
Inspector Test Sign	ITS	\$ 2.50
Open Sprinkler Control Sign	OSCS	\$ 2.70
Open Sprinkler Drain Sign	OSDS	\$ 2.70
Test Valve Sign	TVS	\$ 2.70
Water Motor Line Sign	WMLS	\$ 2.70
Auxiliary Drain Sign	ADS	\$ 2.50
Main Drain Sign	MDS	\$ 2.50
Drain Sign	DS	\$ 2.40
Alarm Test Sign	ATS	\$ 2.70
SIGNS—MODEL C		
Cold Weather Sign	CWS	\$ 10.70
SIGNS—MODEL D		
Fire Alarm Sign	FAS	\$ 12.80
SIGNS—MODEL E		
Hydraulically Calculated System	HCS	\$ 7.10

ELECTRICAL COMPONENTS



Part Name	Part Number	List Price
MODEL WFDT - WATERFLOW DETECTOR		
1" - 2" T-Tap Waterflow	TTAP	\$ 255.00
1" - 2" Threaded T-Tap Waterflow	TTAPTH	\$ 255.00
ACCESSORIES		
1 & 1-1/2" Waterflow Detector Gasket	6999990717	\$ 13.13
2 & 3-1/2" Waterflow Detector Gasket	6999990357	\$ 13.13
4 - 8" Waterflow Detector Gasket	6999990356	\$ 13.13
Waterflow Detector Tamper Switch Kit	6923000000	\$ 49.69
Wrench Cover (Key)	6999990769	\$ 15.94
Plastic Cover	6999990595	\$ 40.21
ELECTRIC ALARM BELLS & HORN/STROBE		
6" -- 24 VDC	6KMS	\$ 78.03
8" -- 24 VDC	8KMS	\$ 97.28
10" -- 24VDC	10KMS	\$ 110.20
BRK MA Polarized Sounder -- 24 VDC	6999993325	\$ 148.00
BRK MASS Polarized Sounder Strobe (#P2R)	6990006617	\$ 115.12
P2RHK-120	6990001425	\$ 168.00
6" -- 120 VAC	6KBS	\$ 78.03
8" -- 120 VAC	8KBS	\$ 97.28
10" -- 120 VAC	10KBS	\$ 110.10
WBB Weatherproof Back Box	WBB	\$ 44.25