

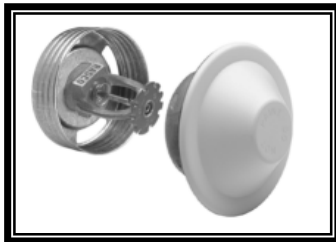


F1RES 30 Pendent & Recessed Pendent

• SIN R3511

Part Number		Temperature	Finish	List Price
F1 RES 30 - 1/2" NPT THREADS (15MM)				
30B	K Factor = 3.0	155°F 68°C	Bronze	\$ 38.51
30C	K Factor = 3.0	155°F 68°C	Chrome	\$ 38.79
30W	K Factor = 3.0	155°F 68°C	White	\$ 38.79
30B5	K Factor = 3.0	175°F 79°C	Bronze	\$ 38.51
30C5	K Factor = 3.0	175°F 79°C	Chrome	\$ 38.79
30W5	K Factor = 3.0	175°F 79°C	White	\$ 38.79
RECESSING ESCUTCHEONS				
GF2B	1/2" (15mm)		Brass	\$ 12.94
GF2C	1/2" (15mm)		Chrome	\$ 7.05
GF2W	1/2" (15mm)		White	\$ 7.05
FPC	Push-On Thread Off		Chrome	\$ 13.59
FPW	Push-On Thread Off		White	\$ 13.59

WD	Requires Model D Sprinkler Wrench	\$ 54.00
WGFR	For Recessed Use Model GFR1 Wrench	\$ 207.00



F1RES 30 CCP

• SIN R3511

- Conical Concealed Sprinkler
- See Bulletin 135

Part Number		Temperature	Finish	List Price
F1RES 30 CCP - 21/64" ORIFICE, 1/2" NPT THREADS — SPRINKLER ONLY				
30CCP1		155°F 68°C	Bronze	\$ 34.88
REQUIRED COVERPLATES				
CCP0C76	1/2" (15mm)		Chrome	\$ 22.60
CCP0W76	1/2" (15mm)		White	\$ 22.60
CCP0SP76	1/2" (15mm)		Specialty	\$ 37.96
CCP05C76	5/16"		Chrome	\$ 22.60
CCP05W76	5/16"		White	\$ 22.60
CCP05SP76	5/16"		Specialty	\$ 37.96

WGFR	For Recessed Use Model GFR1 Wrench	\$ 207.00
------	------------------------------------	-----------

***135°F for Sloped Ceiling Only**

Please refer to the latest sales bulletin for specific approval listings and available finishes.
See our "Specialties Page" for special finish charges — including Teflon Tape.
Items that are MTO allow 7-10 work days.

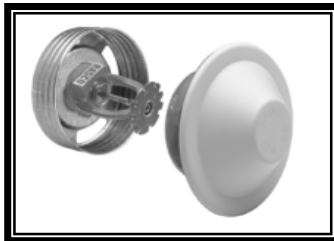


F1RES 49 Pendant & Recessed Pendant

- **SIN R3516**
- See Bulletins 135 & 176

Part Number	Temperature	Finish	List Price
F1 RES 49 - 1/2" NPT THREADS (15MM)			
49B	K Factor = 4.9 155°F 68°C	Bronze	\$ 38.51
49C	K Factor = 4.9 155°F 68°C	Chrome	\$ 38.79
49W	K Factor = 4.9 155°F 68°C	White	\$ 38.79
49B5	K Factor = 4.9 175°F 79°C	Bronze	\$ 38.51
49C5	K Factor = 4.9 175°F 79°C	Chrome	\$ 38.79
49W5	K Factor = 4.9 175°F 79°C	White	\$ 38.79
RECESSING ESCUTCHEONS			
GF1B	1/2" (15mm)	Brass	\$ 14.24
GF1C	1/2" (15mm)	Chrome	\$ 7.05
GF1W	1/2" (15mm)	White	\$ 7.05
GF2B	1/2" (15mm)	Brass	\$ 12.94
GF2C	1/2" (15mm)	Chrome	\$ 7.05
GF2W	1/2" (15mm)	White	\$ 7.05
FPC	Push-On Thread Off	Chrome	\$ 13.59
FPW	Push-On Thread Off	White	\$ 13.59

WD	Requires Model D Sprinkler Wrench	\$ 54.00
WGFR	For Recessed Use Model GFR1 Wrench	\$ 207.00



F1RES 49 CCP

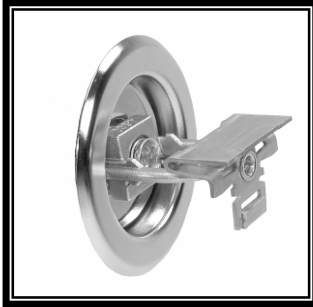
- **SIN R3516**
- Conical Concealed Sprinkler
- See Bulletins 135 & 176

Part Number	Temperature	Finish	List Price
F1RES 49 CCP - 7/16" ORIFICE, 1/2" NPT THREADS — SPRINKLER ONLY			
49CCP1	155°F 68°C	Bronze	\$ 34.88
REQUIRED COVERPLATES			
CCP0C76	1/2" (15mm)	Chrome	\$ 22.60
CCP0W76	1/2" (15mm)	White	\$ 22.60
CCP0SP76	1/2" (15mm)	Specialty	\$ 37.96
CCP05C76	5/16"	Chrome	\$ 22.60
CCP05W76	5/16"	White	\$ 22.60
CCP05SP76	5/16"	Specialty	\$ 37.96

WGFR	For Recessed Use Model GFR1 Wrench	\$ 207.00
------	------------------------------------	-----------

***135°F for Sloped Ceiling Only**

Please refer to the latest sales bulletin for specific approval listings and available finishes.
See our "Specialties Page" for special finish charges — including Teflon Tape.
Items that are MTO allow 7-10 work days.



F1RES 44 HSW & REC HSW

- **SIN R3531**
- Horizontal Sidewall
- Recessed HSW
- See Bulletins 135 & 176

Part Number		Temperature		Finish	List Price
F1RES 44 HSW - 1/2" NPT THREADS (15MM)					
44B	K Factor 4.4	155°F	68°C	Bronze	\$ 39.72
44C	K Factor 4.4	155°F	68°C	Chrome	\$ 39.75
44W	K Factor 4.4	155°F	68°C	White	\$ 39.75
44B5	K Factor 4.4	175°F	79°C	Bronze	\$ 39.72
44C5	K Factor 4.4	175°F	79°C	Chrome	\$ 39.75
44W5	K Factor 4.4	175°F	79°C	White	\$ 39.75
G/F2 ESCUTCHEONS					
GF2B	1/2" (15mm)			Brass	\$ 12.94
GF2C	1/2" (15mm)			Chrome	\$ 7.05
GF2W	1/2" (15mm)			White	\$ 7.05
FPC	Push-On Thread Off			Chrome	\$ 13.59
FPW	Push-On Thread Off			White	\$ 13.59



F1RES 44 SWC

- **SIN R3531**
- Sidewall, Concealed
- See Bulletin 135

Part Number		Temperature		Finish	List Price
F1RES 44 SWC 1/2" NPT THREADS (15MM)					
SWC44	K Factor 4.4	155°F	68°C	Bronze	\$ 38.95
REQUIRED COVERPLATES (1/2" ADJUSTMENT) FOR SWC					
CHWNS		135°F	57°C	White	\$ 23.37
CHSPNS		135°F	57°C	Specialty	\$ 35.05

WD	Requires Model D Sprinkler Wrench	\$ 54.00
WGFR	For Recessed & Concealed Use Model GFR2 Wrench	\$ 207.00

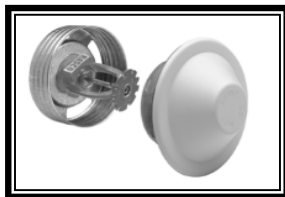
Notes:

Other Coverplate Finishes are on Page S-116
(Plated Finishes are not available)



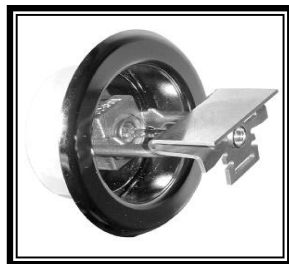
F1RES 58 Pendant & Recessed Pendant

- **SIN R3513**
- See Bulletins 135 & 176



F1RES 58 CCP

- **SIN R3513**
- Residential Concealed
- See Bulletins 135 & 176



F1RES 58 HSW & REC HSW

- **SIN R3513**
- Horizontal Sidewall
- Recessed HSW
- See Bulletins 135 & 176

Part Number	Temperature	Finish	List Price
F1 RES 58 -- 1/2" NPT THREADS (15MM)			
58P1B	K Factor = 5.8 155°F 68°C	Bronze	\$ 38.51
58P1C	K Factor = 5.8 155°F 68°C	Chrome	\$ 38.79
58P1W	K Factor = 5.8 155°F 68°C	White	\$ 38.79
58P5B	K Factor = 5.8 175°F 79°C	Bronze	\$ 38.51
58P5C	K Factor = 5.8 175°F 79°C	Chrome	\$ 38.79
58P5W	K Factor = 5.8 175°F 79°C	White	\$ 38.79
RECESSING ESCUTCHEONS			
GF1B	1/2" (15mm)	Brass	\$ 14.24
GF1C	1/2" (15mm)	Chrome	\$ 7.05
GF1W	1/2" (15mm)	White	\$ 7.05
GF2B	1/2" (15mm)	Brass	\$ 12.94
GF2C	1/2" (15mm)	Chrome	\$ 7.05
GF2W	1/2" (15mm)	White	\$ 7.05
FPC	Push-On Thread Off	Chrome	\$ 13.59
FPW	Push-On Thread Off	White	\$ 13.59

WD	Requires Model D Sprinkler Wrench	\$ 54.00
WGFR	For Recessed Use Model GFR2 Wrench	\$ 207.00

Part Number	Temperature	Finish	List Price
F1RES 58 CCP - 3/8" ORIFICE, 1/2" NPT THREADS — SPRINKLER ONLY			
58CCP1	K Factor = 5.8 155°F 68°C	Bronze	\$ 34.88
REQUIRED COVERPLATES			
CCP0C76	1/2" (15mm)	Chrome	\$ 22.60
CCP0W76	1/2" (15mm)	White	\$ 22.60
CCP0SP76	1/2" (15mm)	Specialty	\$ 37.96
CCP05C76	5/16"	Chrome	\$ 22.60
CCP05W76	5/16"	White	\$ 22.60
CCP05SP76	5/16"	Specialty	\$ 37.96

WGFR	Requires GFR2 Wrench	\$ 207.00
------	----------------------	-----------

Part Number	Temperature	Finish	List Price
F1RES 58 - 1/2" NPT THREADS (15MM)			
58H1B	K Factor = 5.8 155°F 68°C	Bronze	\$ 39.72
58H1C	K Factor = 5.8 155°F 68°C	Chrome	\$ 39.75
58H1W	K Factor = 5.8 155°F 68°C	White	\$ 39.75
58H5B	K Factor = 5.8 175°F 79°C	Bronze	\$ 39.72
58H5C	K Factor = 5.8 175°F 79°C	Chrome	\$ 39.75
58H5W	K Factor = 5.8 175°F 79°C	White	\$ 39.75
G/F2 ESCUTCHEONS			
GF2B	1/2" (15mm)	Brass	\$ 12.94
GF2C	1/2" (15mm)	Chrome	\$ 7.05
GF2W	1/2" (15mm)	White	\$ 7.05
FPC	Push-On Thread Off	Chrome	\$ 13.59
FPW	Push-On Thread Off	White	\$ 13.59

WD	Requires Model D Sprinkler Wrench	\$ 54.00
WGFR	For Recessed & Concealed Use Model GFR2 Wrench	\$ 207.00
	S-95 Sprinklers	

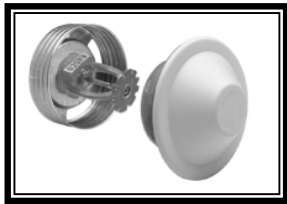


F1RES 76 Pendent & Recessed Pendent

- **SIN R7618**
- K Factor = 7.6
- See Bulletins 135 (.05 Density) and 176 (.10 Density)

Part Number		Temperature	Finish	List Price
F1RES 76 -- 3/4" NPT THREADS (20MM)				
76P1B	K Factor = 7.6	155°F 68°C	Bronze	\$ 39.18
76P1C	K Factor = 7.6	155°F 68°C	Chrome	\$ 41.63
76P1W	K Factor = 7.6	155°F 68°C	White	\$ 41.63
76P5B	K Factor = 7.6	175°F 79°C	Bronze	\$ 39.18
76P5C	K Factor = 7.6	175°F 79°C	Chrome	\$ 41.63
76P5W	K Factor = 7.6	175°F 79°C	White	\$ 41.63
RECESSING ESCUTCHEONS				
GF1LB	3/4"Adjustment		Brass	\$ 14.24
GF1LC	3/4"Adjustment		Chrome	\$ 7.05
GF1LW	3/4"Adjustment		White	\$ 7.05
GF2LB	1/2"Adjustment		Brass	\$ 12.94
GF2LC	1/2"Adjustment		Chrome	\$ 7.05
GF2LW	1/2"Adjustment		White	\$ 7.05
FPLC	Push-On Thread Off		Chrome	\$ 13.59
FPLW	Push-On Thread Off		White	\$ 13.59

WD Requires Model D Sprinkler Wrench \$ 54.00
WGFR For Recessed Use Model GFR2 Wrench \$ 207.00



F1RES 76 CCP

- **SIN R7618**
- K Factor = 7.6
- See Bulletins 135 (.05 Density) and 176 (.10 Density)

Part Number		Temperature	Finish	List Price
F1RES 76 CCP - 3/4" NPT THREADS — SPRINKLER ONLY				
76CCP1	K Factor = 7.6	155°F 68°C	Bronze	\$ 48.98
76CCP5	K Factor = 7.6	175°F 79°C	Bronze	\$ 48.98
REQUIRED COVERPLATES = CCP (76) 135 DEGREE				
CCP05C76	5/16"Adustment		Chrome	\$ 22.60
CCP05W76	5/16"Adustment		White	\$ 22.60
CCP05SP76	5/16"Adustment		Specialty	\$ 37.96
CCP0C76	1/2"Adustment		Chrome	\$ 22.60
CCP0W76	1/2"Adustment		White	\$ 22.60
CCP0SP76	1/2"Adustment		Specialty	\$ 37.96

WGFR Requires GFR2 Wrench \$ 207.00

Please refer to the latest sales bulletin for specific approval listings and available finishes. See our "Specialties Page" for special finish charges — including Teflon Tape. Items that are MTO allow 7-10 work days.



NEW

RFC30 Flat Concealed

- **SIN RA0611**
- K Factor = 3.0
- See Bulletin 006

RFC43 Flat Concealed

- **SIN RA0612**
- K Factor = 4.3
- See Bulletin 006

RFC49 Flat Concealed

- **SIN RA0616**
- K Factor = 4.9
- See Bulletin 006

RFC56 Flat Concealed

- **SIN RA0914**
- K Factor = 5.6
- See Bulletin 009

Part Number	Temperature	Finish	List Price
RFC30 - 1/2" NPT THREADS — SPRINKLER ONLY			
RFC30	K Factor = 3.0 165°F 74°F	Bronze	\$ 49.76
RFC43 - 1/2" NPT THREADS — SPRINKLER ONLY			
RFC43	K Factor = 4.3 165°F 74°F	Bronze	\$ 49.76
RFC49 - 1/2" NPT THREADS — SPRINKLER ONLY			
RFC49	K Factor = 4.9 165°F 74°F	Bronze	\$ 49.76
RFC56 - 1/2" NPT THREADS — SPRINKLER ONLY			
RFC56	K Factor = 5.6 165°F 74°F	Bronze	\$ 60.19
REQUIRED COVERPLATES			
CRFCW	135°F 57°C	White	\$ 24.94

WFC RFC43 & RFC49 require Model FC Sprinkler Wrench \$ 207.00

Features:

- Listed for a minimum of .05 gpm/ft2
- Solder fusible link
- Smooth, aesthetic ceiling profile
- For use in wet pipe systems in accordance with NFPA 13D and 13R, and for use in the residential portion of any occupancy per NFPA 13
- Push-On/Thread-Off cover plate provides 1/2" (13mm) of adjustment
- Can be used for flat and sloped ceilings

Notes:

Other Coverplate Finishes are on Page S-116
(Plated Finishes are not available)