



### F1FR 56 UPRIGHT

- K-Factor = 5.6 (80)
- Glass Bulb
- Thread Size = 1/2"
- See Bulletin 014



### F1FR UPRIGHT

- Quick Response
- Glass Bulb
- See Bulletin 136

Please refer to the latest bulletin for specific approval listings and available finishes.  
See our "Specialties Page" for special finish charges — including Teflon Tape.  
Items that are MTO allow 7-10 work days.

Part Number	Temperature	Finish	List Price
<b>1/2" ORIFICE, 1/2" NPT THREAD (15MM)</b>			
F1FR56U0B	135°F 57°C	Bronze	\$ 33.31
F1FR56U0C	135°F 57°C	Chrome	\$ 36.71
F1FR56U0W	135°F 57°C	White	\$ 38.89
F1FR56U1B	155°F 68°C	Bronze	\$ 33.31
F1FR56U1C	155°F 68°C	Chrome	\$ 36.71
F1FR56U1W	155°F 68°C	White	\$ 38.89
F1FR56U5B	175°F 79°C	Bronze	\$ 33.31
F1FR56U5C	175°F 79°C	Chrome	\$ 36.71
F1FR56U5W	175°F 79°C	White	\$ 38.89
F1FR56U2B	200°F 93°C	Bronze	\$ 33.31
F1FR56U2C	200°F 93°C	Chrome	\$ 36.71
F1FR56U2W	200°F 93°C	White	\$ 38.89
F1FR56U3B	286°F 141°C	Bronze	\$ 33.31
F1FR56U3C	286°F 141°C	Chrome	\$ 36.71
F1FR56U3W	286°F 141°C	White	\$ 38.89
<b>17/32" ORIFICE, 3/4" NPT THREAD (20MM)</b>			
F1FRU0LB	135°F 57°C	Bronze	\$ 40.52
F1FRU0LC	135°F 57°C	Chrome	\$ 45.71
F1FRU0LW	135°F 57°C	White	\$ 46.76
F1FRU1LB	155°F 68°C	Bronze	\$ 40.52
F1FRU1LC	155°F 68°C	Chrome	\$ 45.71
F1FRU1LW	155°F 68°C	White	\$ 46.76
F1FRU5LB	175°F 79°C	Bronze	\$ 40.52
F1FRU5LC	175°F 79°C	Chrome	\$ 45.71
F1FRU5LW	175°F 79°C	White	\$ 46.76
F1FRU2LB	200°F 93°C	Bronze	\$ 40.52
F1FRU2LC	200°F 93°C	Chrome	\$ 45.71
F1FRU2LW	200°F 93°C	White	\$ 46.76
F1FRU3LB	286°F 141°C	Bronze	\$ 40.52
F1FRU3LC	286°F 141°C	Chrome	\$ 45.71
F1FRU3LW	286°F 141°C	White	\$ 46.76

WD Requires Model D Sprinkler Wrench \$ 54.00

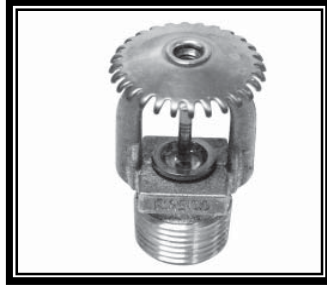


### F1FR UPRIGHT

- Quick Response
- Glass Bulb
- See Bulletin 136

Please refer to the latest bulletin for specific approval listings and available finishes.  
See our "Specialties Page" for special finish charges — including Teflon Tape.  
Items that are MTO allow 7-10 work days.

Part Number	Temperature	Finish	List Price
<b>3/8" ORIFICE, 1/2" NPT THREADS</b>			
F1FRU03B	135°F 57°C	Bronze	\$ 43.12
F1FRU03C	135°F 57°C	Chrome	\$ 46.52
F1FRU03W	135°F 57°C	White	\$ 47.17
F1FRU13B	155°F 68°C	Bronze	\$ 43.12
F1FRU13C	155°F 68°C	Chrome	\$ 46.52
F1FRU13W	155°F 68°C	White	\$ 47.17
F1FRU53B	175°F 79°C	Bronze	\$ 43.12
F1FRU53C	175°F 79°C	Chrome	\$ 46.52
F1FRU53W	175°F 79°C	White	\$ 47.17
F1FRU23B	200°F 93°C	Bronze	\$ 43.12
F1FRU23C	200°F 93°C	Chrome	\$ 46.52
F1FRU23W	200°F 93°C	White	\$ 47.17
F1FRU33B	286°F 141°C	Bronze	\$ 43.12
F1FRU33C	286°F 141°C	Chrome	\$ 46.52
F1FRU33W	286°F 141°C	White	\$ 47.17
<b>7/16" ORIFICE, 1/2" NPT THREADS</b>			
F1FRU07B	135°F 57°C	Bronze	\$ 43.12
F1FRU07C	135°F 57°C	Chrome	\$ 46.52
F1FRU07W	135°F 57°C	White	\$ 47.17
F1FRU17B	155°F 68°C	Bronze	\$ 43.12
F1FRU17C	155°F 68°C	Chrome	\$ 46.52
F1FRU17W	155°F 68°C	White	\$ 47.17
F1FRU57B	175°F 79°C	Bronze	\$ 43.12
F1FRU57C	175°F 79°C	Chrome	\$ 46.52
F1FRU57W	175°F 79°C	White	\$ 47.17
F1FRU27B	200°F 93°C	Bronze	\$ 43.12
F1FRU27C	200°F 93°C	Chrome	\$ 46.52
F1FRU27W	200°F 93°C	White	\$ 47.17
F1FRU37B	286°F 141°C	Bronze	\$ 43.12
F1FRU37C	286°F 141°C	Chrome	\$ 46.52
F1FRU37W	286°F 141°C	White	\$ 47.17
<b>10MM ORIFICE, 10MM THREADS</b>			
F1FRU0BMM	135°F 57°C	Bronze	\$ 39.17
F1FRU0CMM	135°F 57°C	Chrome	\$ 42.21
F1FRU0WMM	135°F 57°C	White	\$ 42.77
F1FRU1BMM	155°F 68°C	Bronze	\$ 39.17
F1FRU1CMM	155°F 68°C	Chrome	\$ 42.21
F1FRU1WMM	155°F 68°C	White	\$ 42.77
F1FRU5BMM	175°F 79°C	Bronze	\$ 39.17
F1FRU5CMM	175°F 79°C	Chrome	\$ 42.21
F1FRU5WMM	175°F 79°C	White	\$ 43.57
F1FRU2BMM	200°F 93°C	Bronze	\$ 39.17
F1FRU2CMM	200°F 93°C	Chrome	\$ 42.21
F1FRU2WMM	200°F 93°C	White	\$ 42.77
F1FRU3BMM	286°F 141°C	Bronze	\$ 39.17
F1FRU3CMM	286°F 141°C	Chrome	\$ 42.21
F1FRU3WMM	286°F 141°C	White	\$ 42.77
WD	Requires Model D Sprinkler Wrench		\$ 54.00



### F1FR56-300 UPRIGHT

- K-Factor = 5.6 (80)
- 3mm Glass Bulb
- Thread Size = 1/2"
- 300 PSI Rated
- See Bulletin 026



### F1FR-300 UPRIGHT

- Quick Response
- Glass Bulb Sprinkler
- 300 PSI Rated
- See Bulletin 156

Please refer to the latest bulletin for specific approval listings and available finishes.  
See our "Specialties Page" for special finish charges — including Teflon Tape.  
Items that are MTO allow 7-10 work days.

Part Number	Temperature	Finish	List Price
<b>1/2" ORIFICE, 1/2" NPT THREAD (15MM) — 300 PSI</b>			
F1FR56U0B3	135°F 57°C	Bronze	\$ 35.02
F1FR56U0C3	135°F 57°C	Chrome	\$ 38.55
F1FR56U0W3	135°F 57°C	White	\$ 40.81
F1FR56U1B3	155°F 68°C	Bronze	\$ 35.02
F1FR56U1C3	155°F 68°C	Chrome	\$ 38.55
F1FR56U1W3	155°F 68°C	White	\$ 40.81
F1FR56U5B3	175°F 79°C	Bronze	\$ 35.02
F1FR56U5C3	175°F 79°C	Chrome	\$ 38.55
F1FR56U5W3	175°F 79°C	White	\$ 40.81
F1FR56U2B3	200°F 93°C	Bronze	\$ 35.02
F1FR56U2C3	200°F 93°C	Chrome	\$ 38.55
F1FR56U2W3	200°F 93°C	White	\$ 40.81
F1FR56U3B3	286°F 141°C	Bronze	\$ 35.02
F1FR56U3C3	286°F 141°C	Chrome	\$ 38.55
F1FR56U3W3	286°F 141°C	White	\$ 40.81
<b>17/32" ORIFICE, 3/4" NPT THREAD (20MM) — 300 PSI</b>			
F1FRU0LB3	135°F 57°C	Bronze	\$ 42.49
F1FRU0LC3	135°F 57°C	Chrome	\$ 48.13
F1FRU0LW3	135°F 57°C	White	\$ 48.13
F1FRU1LB3	155°F 68°C	Bronze	\$ 42.49
F1FRU1LC3	155°F 68°C	Chrome	\$ 48.13
F1FRU1LW3	155°F 68°C	White	\$ 48.13
F1FRU5LB3	175°F 79°C	Bronze	\$ 42.49
F1FRU5LC3	175°F 79°C	Chrome	\$ 48.13
F1FRU5LW3	175°F 79°C	White	\$ 48.13
F1FRU2LB3	200°F 93°C	Bronze	\$ 42.49
F1FRU2LC3	200°F 93°C	Chrome	\$ 48.13
F1FRU2LW3	200°F 93°C	White	\$ 48.13
F1FRU3LB3	286°F 141°C	Bronze	\$ 42.49
F1FRU3LC3	286°F 141°C	Chrome	\$ 48.13
F1FRU3LW3	286°F 141°C	White	\$ 48.13

WD Requires Model D Sprinkler Wrench \$ 54.00



### F1FR 56 PENDENT

- K-Factor = 5.6 (80)
- 3mm Glass Bulb
- Thread Size = 1/2"
- See Bulletin 014



### F1FR PENDENT

- Quick Response
- Glass Bulb
- See Bulletin 136

Please refer to the latest bulletin for specific approval listings and available finishes. See our "Specialties Page" for special finish charges — including Teflon Tape. Items that are MTO allow 7-10 work days.

Part Number	Temperature	Finish	List Price
<b>1/2" ORIFICE, 1/2" NPT THREAD (15MM)</b>			
F1FR56POB	135°F 57°C	Bronze	\$ 33.31
F1FR56POC	135°F 57°C	Chrome	\$ 35.66
F1FR56POW	135°F 57°C	White Poly	\$ 37.81
F1FR56P1B	155°F 68°C	Bronze	\$ 33.31
F1FR56P1C	155°F 68°C	Chrome	\$ 35.66
F1FR56P1W	155°F 68°C	White Poly	\$ 37.81
F1FR56P5B	175°F 79°C	Bronze	\$ 33.31
F1FR56P5C	175°F 79°C	Chrome	\$ 35.66
F1FR56P5W	175°F 79°C	White Poly	\$ 37.81
F1FR56P2B	200°F 93°C	Bronze	\$ 33.31
F1FR56P2C	200°F 93°C	Chrome	\$ 35.66
F1FR56P2W	200°F 93°C	White Poly	\$ 37.81
F1FR56P3B	286°F 141°C	Bronze	\$ 33.31
F1FR56P3C	286°F 141°C	Chrome	\$ 35.66
F1FR56P3W	286°F 141°C	White Poly	\$ 37.81
<b>17/32" ORIFICE, 3/4" NPT THREAD (20MM)</b>			
F1FRPOLB	135°F 57°C	Bronze	\$ 41.73
F1FRPOLC	135°F 57°C	Chrome	\$ 45.71
F1FRPOLW	135°F 57°C	White	\$ 46.34
F1FRP1LB	155°F 68°C	Bronze	\$ 41.73
F1FRP1LC	155°F 68°C	Chrome	\$ 45.71
F1FRP1LW	155°F 68°C	White	\$ 46.34
F1FRP5LB	175°F 79°C	Bronze	\$ 41.73
F1FRP5LC	175°F 79°C	Chrome	\$ 45.71
F1FRP5LW	175°F 79°C	White	\$ 46.34
F1FRP2LB	200°F 93°C	Bronze	\$ 41.73
F1FRP2LC	200°F 93°C	Chrome	\$ 45.71
F1FRP2LW	200°F 93°C	White	\$ 46.34
F1FRP3LB	286°F 141°C	Bronze	\$ 41.73
F1FRP3LC	286°F 141°C	Chrome	\$ 45.71
F1FRP3LW	286°F 141°C	White	\$ 46.34
<b>F2 ESCUTCHEONS &amp; COLLAR ASSEMBLY</b>			
GF2B	1/2" (15mm)	Bronze	\$ 12.94
GF2C	1/2" (15mm)	Chrome	\$ 7.05
GF2W	1/2" (15mm)	White	\$ 7.05
GF2LB	3/4" (20mm)	Bronze	\$ 12.94
GF2LC	3/4" (20mm)	Chrome	\$ 7.05
GF2LW	3/4" (20mm)	White	\$ 7.05

WD	Requires Model D Sprinkler Wrench	\$ 54.00
WGFR	Recessed Use Model GFR1 Sprinkler Wrench	\$ 207.00



### F1FR PENDENT

- Quick Response
- Glass Bulb
- See Bulletin 136

Please refer to the latest bulletin for specific approval listings and available finishes.

See our "Specialties Page" for special finish charges — including Teflon Tape.

Items that are MTO allow 7-10 work days.

Part Number	Temperature		Finish	List Price
<b>3/8" ORIFICE, 1/2" NPT THREADS</b>				
F1FRP03B	135°F	57°C	Bronze	\$ 43.12
F1FRP03C	135°F	57°C	Chrome	\$ 46.52
F1FRP03W	135°F	57°C	White	\$ 47.17
F1FRP13B	155°F	68°C	Bronze	\$ 43.12
F1FRP13C	155°F	68°C	Chrome	\$ 46.52
F1FRP13W	155°F	68°C	White	\$ 47.17
F1FRP53B	175°F	79°C	Bronze	\$ 43.12
F1FRP53C	175°F	79°C	Chrome	\$ 46.52
F1FRP53W	175°F	79°C	White	\$ 47.17
F1FRP23B	200°F	93°C	Bronze	\$ 43.12
F1FRP23C	200°F	93°C	Chrome	\$ 46.52
F1FRP23W	200°F	93°C	White	\$ 47.17
F1FRP33B	286°F	141°C	Bronze	\$ 43.12
F1FRP33C	286°F	141°C	Chrome	\$ 46.52
F1FRP33W	286°F	141°C	White	\$ 47.17
<b>7/16" ORIFICE, 1/2" NPT THREADS</b>				
F1FRP07B	135°F	57°C	Bronze	\$ 43.12
F1FRP07C	135°F	57°C	Chrome	\$ 46.52
F1FRP07W	135°F	57°C	White	\$ 47.17
F1FRP17B	155°F	68°C	Bronze	\$ 43.12
F1FRP17C	155°F	68°C	Chrome	\$ 46.52
F1FRP17W	155°F	68°C	White	\$ 47.17
F1FRP57B	175°F	79°C	Bronze	\$ 43.12
F1FRP57C	175°F	79°C	Chrome	\$ 46.52
F1FRP57W	175°F	79°C	White	\$ 47.17
F1FRP27B	200°F	93°C	Bronze	\$ 43.12
F1FRP27C	200°F	93°C	Chrome	\$ 46.52
F1FRP27W	200°F	93°C	White	\$ 47.17
F1FRP37B	286°F	141°C	Bronze	\$ 43.12
F1FRP37C	286°F	141°C	Chrome	\$ 46.52
F1FRP37W	286°F	141°C	White	\$ 47.17
<b>10MM ORIFICE, 10MM THREADS</b>				
F1FRP0BMM	135°F	57°C	Bronze	\$ 39.17
F1FRP0CMM	135°F	57°C	Chrome	\$ 42.21
F1FRP0WMM	135°F	57°C	White	\$ 42.77
F1FRP1BMM	155°F	68°C	Bronze	\$ 39.17
F1FRP1CMM	155°F	68°C	Chrome	\$ 42.21
F1FRP1WMM	155°F	68°C	White	\$ 42.77
F1FRP5BMM	175°F	79°C	Bronze	\$ 39.17
F1FRP5CMM	175°F	79°C	Chrome	\$ 42.21
F1FRP5WMM	175°F	79°C	White	\$ 42.77
F1FRP2BMM	200°F	93°C	Bronze	\$ 39.17
F1FRP2CMM	200°F	93°C	Chrome	\$ 42.21
F1FRP2WMM	200°F	93°C	White	\$ 42.77
F1FRP3BMM	286°F	141°C	Bronze	\$ 39.17
F1FRP3CMM	286°F	141°C	Chrome	\$ 42.21
F1FRP3WMM	286°F	141°C	White	\$ 42.77

WD	Requires Model D Sprinkler Wrench	\$ 54.00
WGFR	Recessed Use Model GFR1 Sprinkler Wrench	\$ 207.00



**F1FR56-300 PENDENT**

- K-Factor = 5.6 (80)
- 3mm Glass Bulb
- Thread Size = 1/2"
- 300 PSI Rated
- See Bulletin 026



**F1FR-300 PENDENT**

- Quick Response
- Glass Bulb Sprinkler
- 300 PSI Rated
- See Bulletin 156

Please refer to the latest bulletin for specific approval listings and available finishes.  
See our "Specialties Page" for special finish charges — including Teflon Tape.  
Items that are MTO allow 7-10 work days.

Part Number	Temperature	Finish	List Price
<b>1/2" ORIFICE, 1/2" NPT THREAD (15MM) — 300 PSI</b>			
F1FR56POB3	135°F 57°C	Bronze	\$ 35.03
F1FR56POC3	135°F 57°C	Chrome	\$ 37.43
F1FR56POW3	135°F 57°C	White	\$ 39.63
F1FR56P1B3	155°F 68°C	Bronze	\$ 35.03
F1FR56P1C3	155°F 68°C	Chrome	\$ 37.43
F1FR56P1W3	155°F 68°C	White	\$ 39.63
F1FR56P5B3	175°F 79°C	Bronze	\$ 35.02
F1FR56P5C3	175°F 79°C	Chrome	\$ 37.43
F1FR56P5W3	175°F 79°C	White	\$ 39.63
F1FR56P2B3	200°F 93°C	Bronze	\$ 35.03
F1FR56P2C3	200°F 93°C	Chrome	\$ 37.43
F1FR56P2W3	200°F 93°C	White	\$ 39.63
F1FR56P3B3	286°F 141°C	Bronze	\$ 35.03
F1FR56P3C3	286°F 141°C	Chrome	\$ 37.43
F1FR56P3W3	286°F 141°C	White	\$ 39.63
<b>17/32" ORIFICE, 3/4" NPT THREAD (20MM) — 300 PSI</b>			
F1FRP0LB3	135°F 57°C	Bronze	\$ 43.73
F1FRP0LC3	135°F 57°C	Chrome	\$ 48.13
F1FRP0LW3	135°F 57°C	White	\$ 48.13
F1FRP1LB3	155°F 68°C	Bronze	\$ 43.73
F1FRP1LC3	155°F 68°C	Chrome	\$ 48.13
F1FRP1LW3	155°F 68°C	White	\$ 48.13
F1FRP5LB3	175°F 79°C	Bronze	\$ 43.73
F1FRP5LC3	175°F 79°C	Chrome	\$ 48.13
F1FRP5LW3	175°F 79°C	White	\$ 48.13
F1FRP2LB3	200°F 93°C	Bronze	\$ 43.73
F1FRP2LC3	200°F 93°C	Chrome	\$ 48.13
F1FRP2LW3	200°F 93°C	White	\$ 48.13
F1FRP3LB3	286°F 141°C	Bronze	\$ 43.73
F1FRP3LC3	286°F 141°C	Chrome	\$ 48.13
F1FRP3LW3	286°F 141°C	White	\$ 48.13
<b>G/F1 ESCUTCHEONS</b>			
GF1B	1/2" (15mm)	Brass	\$ 14.24
GF1C	1/2" (15mm)	Chrome	\$ 7.05
GF1W	1/2" (15mm)	White	\$ 7.05
GF1LB	3/4" (20mm)	Brass	\$ 14.24
GF1LC	3/4" (20mm)	Chrome	\$ 7.05
GF1LW	3/4" (20mm)	White	\$ 7.05

WD	Requires Model D Sprinkler Wrench	\$ 54.00
WGFR	Recessed Use Model GFR1 Sprinkler Wrench	\$ 207.00



### F1FR 56 CONVENTIONAL

- K-Factor = 5.6 (80)
- Glass Bulb
- Thread Size = 1/2"
- See Bulletin 014



### F1FR CONVENTIONAL

- Quick Response
- Glass Bulb
- See Bulletin 136

Please refer to the latest bulletin for specific approval listings and available finishes.  
See our "Specialties Page" for special finish charges — including Teflon Tape.  
Items that are MTO allow 7-10 work days.

Part Number	Temperature	Finish	List Price
<b>1/2" ORIFICE, 1/2" NPT THREADS (15MM)</b>			
F1FR56C0B	135°F 57°C	Bronze	\$ 33.31
F1FR56C0C	135°F 57°C	Chrome	\$ 35.66
F1FR56C0W	135°F 57°C	White	\$ 37.81
F1FR56C1B	155°F 68°C	Bronze	\$ 33.31
F1FR56C1C	155°F 68°C	Chrome	\$ 35.66
F1FR56C1W	155°F 68°C	White	\$ 37.81
F1FR56C5B	175°F 79°C	Bronze	\$ 33.31
F1FR56C5C	175°F 79°C	Chrome	\$ 35.66
F1FR56C5W	175°F 79°C	White	\$ 37.81
F1FR56C2B	200°F 93°C	Bronze	\$ 33.31
F1FR56C2C	200°F 93°C	Chrome	\$ 35.66
F1FR56C2W	200°F 93°C	White	\$ 37.81
F1FR56C3B	286°F 141°C	Bronze	\$ 33.31
F1FR56C3C	286°F 141°C	Chrome	\$ 35.66
F1FR56C3W	286°F 141°C	White	\$ 37.81
<b>17/32" ORIFICE, 3/4" NPT THREADS (20MM)</b>			
F1FRC0LB	135°F 57°C	Bronze	\$ 41.73
F1FRC0LC	135°F 57°C	Chrome	\$ 45.71
F1FRC0LW	135°F 57°C	White	\$ 46.34
F1FRC1LB	155°F 68°C	Bronze	\$ 41.73
F1FRC1LC	155°F 68°C	Chrome	\$ 45.71
F1FRC1LW	155°F 68°C	White	\$ 46.34
F1FRC5LB	175°F 79°C	Bronze	\$ 41.73
F1FRC5LC	175°F 79°C	Chrome	\$ 45.71
F1FRC5LW	175°F 79°C	White	\$ 46.34
F1FRC2LB	200°F 93°C	Bronze	\$ 41.73
F1FRC2LC	200°F 93°C	Chrome	\$ 45.71
F1FRC2LW	200°F 93°C	White	\$ 46.34
F1FRC3LB	286°F 141°C	Bronze	\$ 41.73
F1FRC3LC	286°F 141°C	Chrome	\$ 45.71
F1FRC3LW	286°F 141°C	White	\$ 46.34

WD Requires Model D Sprinkler Wrench \$ 54.00



### F1FR 56 HSW

- K-Factor = 5.6 (80)
- 3mm Glass Bulb
- Thread Size = 1/2"
- See Bulletin 014

Please refer to the latest bulletin for specific approval listings and available finishes.  
See our "Specialties Page" for special finish charges — including Teflon Tape.  
Items that are MTO allow 7-10 work days.

Part Number	Temperature	Finish	List Price
<b>1/2" ORIFICE, 1/2" NPT THREADS (15MM)</b>			
F1FR56H0B	135°F 57°C	Bronze	\$ 38.39
F1FR56H0C	135°F 57°C	Chrome	\$ 41.11
F1FR56H0W	135°F 57°C	White	\$ 45.42
F1FR56H1B	155°F 68°C	Bronze	\$ 38.39
F1FR56H1C	155°F 68°C	Chrome	\$ 41.11
F1FR56H1W	155°F 68°C	White	\$ 45.42
F1FR56H5B	175°F 79°C	Bronze	\$ 38.39
F1FR56H5C	175°F 79°C	Chrome	\$ 41.11
F1FR56H5W	175°F 79°C	White	\$ 45.42
F1FR56H2B	200°F 93°C	Bronze	\$ 38.39
F1FR56H2C	200°F 93°C	Chrome	\$ 41.11
F1FR56H2W	200°F 93°C	White	\$ 45.42
F1FR56H3B	286°F 141°C	Bronze	\$ 38.39
F1FR56H3C	286°F 141°C	Chrome	\$ 41.11
F1FR56H3W	286°F 141°C	White	\$ 45.42
<b>F2 ESCUTCHEONS &amp; COLLAR ASSEMBLY</b>			
GF2B	1/2" (15mm)	Bronze	\$ 12.94
GF2C	1/2" (15mm)	Chrome	\$ 7.05
GF2W	1/2" (15mm)	White	\$ 7.05

WD	Requires Model D Sprinkler Wrench	\$ 54.00
WGFR	Recessed Use Model GFR1 Sprinkler Wrench	\$ 207.00



### F1FR56 VSW

- K-Factor = 5.6 (80)
- 3mm Glass Bulb
- Thread Size = 1/2"
- See Bulletin 014

Part Number	Temperature	Finish	List Price
<b>1/2" ORIFICE, 1/2" NPT THREADS (15MM)</b>			
F1FR56V0B	135°F 57°C	Bronze	\$ 41.92
F1FR56V0C	135°F 57°C	Chrome	\$ 45.31
F1FR56V0W	135°F 57°C	White	\$ 46.76
F1FR56V1B	155°F 68°C	Bronze	\$ 41.92
F1FR56V1C	155°F 68°C	Chrome	\$ 45.31
F1FR56V1W	155°F 68°C	White	\$ 46.76
F1FR56V5B	175°F 79°C	Bronze	\$ 41.92
F1FR56V5C	175°F 79°C	Chrome	\$ 45.31
F1FR56V5W	175°F 79°C	White	\$ 46.76
F1FR56V2B	200°F 93°C	Bronze	\$ 41.92
F1FR56V2C	200°F 93°C	Chrome	\$ 45.31
F1FR56V2W	200°F 93°C	White	\$ 46.76
F1FR56V3B	286°F 141°C	Bronze	\$ 41.92
F1FR56V3C	286°F 141°C	Chrome	\$ 45.31
F1FR56V3W	286°F 141°C	White	\$ 46.76



### GFR UPRIGHT

- Quick Response
- Solder Type
- See Bulletin 131

<b>1/2" ORIFICE, 1/2" NPT THREADS (15MM)</b>			
GFRUB	165°F 74°C	Bronze	\$ 45.47
GFRUC	165°F 74°C	Chrome	\$ 49.91
GFRU2B	212°F 100°C	Bronze	\$ 45.47
GFRU2C	212°F 100°C	Chrome	\$ 49.91
<b>17/32" ORIFICE, 3/4" NPT THREADS (20MM)</b>			
GFRULB	165°F 74°C	Bronze	\$ 56.57
GFRULC	165°F 74°C	Chrome	\$ 63.85
<b>3/8" ORIFICE, 1/2" NPT THREADS</b>			
GFRU3B	165°F 74°C	Bronze	\$ 57.24
GFRU3C	165°F 74°C	Chrome	\$ 66.34
<b>7/16" ORIFICE, 1/2" NPT THREADS</b>			
GFRU7B	165°F 74°C	Bronze	\$ 57.24
GFRU7C	165°F 74°C	Chrome	\$ 66.34
<b>10MM THREADS</b>			
GFRUBMM	165°F 74°C	Bronze	\$ 49.76
GFRUCMM	165°F 74°C	Chrome	\$ 55.98

WD Requires Model D Sprinkler Wrench \$ 54.00

\* Please note that all of the GFR's are offered in 212°F

Please refer to the latest bulletin for specific approval listings and available finishes.  
See our "Specialties Page" for special finish charges — including Teflon Tape.  
Items that are MTO allow 7-10 work days.



GFR PENDENT

- Quick Response
- Solder Type
- See Bulletin 131

Part Number	Temperature	Finish	List Price
<b>1/2" ORIFICE, 1/2" NPT THREADS (15MM)</b>			
GFRPB	165°F 74°C	Bronze	\$ 45.47
GFRPC	165°F 74°C	Chrome	\$ 49.91
GFRP2B	212°F 100°C	Bronze	\$ 45.47
GFRP2C	212°F 100°C	Chrome	\$ 49.91
<b>17/32" ORIFICE, 3/4" NPT THREADS (20MM)</b>			
GFRPLB	165°F 74°C	Bronze	\$ 56.57
GFRPLC	165°F 74°C	Chrome	\$ 63.85
<b>3/8" ORIFICE, 1/2" NPT THREADS</b>			
GFRP3B	165°F 74°C	Bronze	\$ 56.57
GFRP3C	165°F 74°C	Chrome	\$ 63.85
<b>7/16" ORIFICE, 1/2" NPT THREADS</b>			
GFRP7B	165°F 74°C	Bronze	\$ 56.57
GFRP7C	165°F 74°C	Chrome	\$ 63.85
<b>10MM THREADS</b>			
GFRPBMM	165°F 74°C	Bronze	\$ 49.76
GFRPCMM	165°F 74°C	Chrome	\$ 55.98



GFR HSW

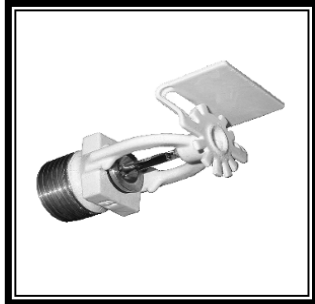
- Quick Response
- Solder Type
- See Bulletin 131

Please refer to the latest bulletin for specific approval listings and available finishes.  
See our "Specialties Page" for special finish charges — including Teflon Tape.  
Items that are MTO allow 7-10 work days.

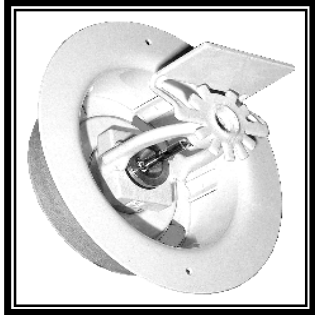
<b>1/2" ORIFICE, 1/2" NPT THREADS (15MM)</b>			
GFRHB	165°F 74°C	Bronze	\$ 49.91
GFRHC	165°F 74°C	Chrome	\$ 54.33
GFRH2B	212°F 100°C	Bronze	\$ 49.91
GFRH2C	212°F 100°C	Chrome	\$ 54.33
<b>17/32" ORIFICE, 3/4" NPT THREADS (20MM)</b>			
GFRHLB	165°F 74°C	Bronze	\$ 52.15
GFRHLC	165°F 74°C	Chrome	\$ 58.79
<b>3/8" ORIFICE, 1/2" NPT THREADS</b>			
GFRH3B	165°F 74°C	Bronze	\$ 59.46
GFRH3C	165°F 74°C	Chrome	\$ 63.85
<b>7/16" ORIFICE, 1/2" NPT THREADS</b>			
GFRH7B	165°F 74°C	Bronze	\$ 59.46
GFRH7C	165°F 74°C	Chrome	\$ 63.85
<b>GF2 ESCUTCHEONS</b>			
GF2B	1/2" (15mm)	Brass	\$ 12.94
GF2C	1/2" (15mm)	Chrome	\$ 7.05
GF2W	1/2" (15mm)	White	\$ 7.05
GF2LB	3/4" (20mm)	Brass	\$ 12.94
GF2LC	3/4" (20mm)	Chrome	\$ 7.05
GF2LW	3/4" (20mm)	White	\$ 7.05

\* Also available in 212°F

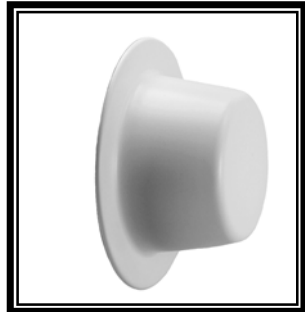
WD	Requires Model D Sprinkler Wrench	\$ 54.00
WGFR	For Recessed Use Model GFR1 Wrench	\$ 207.00



SW56 (HSW)



SW56 (REC HSW)



SWC56 (CCP CONC)

SW56, SW56 RECESSED  
& SWC56 CONCEALED

- Quick Response
- 5.6 K Factor
- HSW, HSW REC, Concealed
- 300 PSI (20,7bar) Rated
- See Bulletin 026

Part Number	Temperature	Finish	List Price
<b>SW56 HSW — SPRINKLER ONLY</b>			
SWH0B	135°F 57°C	Bronze	\$ 39.93
SWH0C	135°F 57°C	Chrome	\$ 42.70
SWH0W	135°F 57°C	White	\$ 47.08
SWH1B	155°F 68°C	Bronze	\$ 39.93
SWH1C	155°F 68°C	Chrome	\$ 42.70
SWH1W	155°F 68°C	White	\$ 47.08
<b>FP PUSH-ON/THREAD-OFF ESCUTCHEON</b>			
FPC	1/2" (15mm)	Chrome	\$ 13.59
FPW	1/2" (15mm)	White	\$ 13.59
<b>SWC56 (USED FOR CONCEALED) — SPRINKLER ONLY</b>			
SWC560	135°F 57°C	Bronze	\$ 40.52
SWC561	155°F 68°C	Bronze	\$ 40.52
<b>REQUIRED COVERPLATES FOR CONCEALED (1/2" ADJUSTMENT)</b>			
CHWNS	135°F 57°C	White	\$ 23.37
CHSPNS	135°F 57°C	Specialty	\$ 35.05

WD	Requires Model D Sprinkler Wrench	\$ 54.00
WGFR	Requires Model GFR1 Wrench	\$ 207.00

**Notes:**

For custom finishes, customer should provide paint sample.  
Allow at least 2-3 weeks. A set-up charge is required for all orders under 500 pieces. Consult factory for details.