

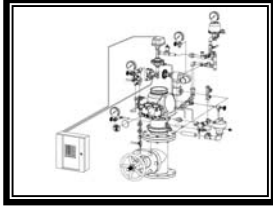
**Preaction
Systems with
our DDX Valve**

SPECIAL HAZARDS

SPECIAL SYSTEMS

- See Bulletins 736, 727, 743, 734, 731, 741, 735, 732, 742, 730, 737, 738, 728, 729, 744, 745

| Description | Part Number | List Price |
|---|-------------|--------------|
| MODEL DDX - DELUGE VALVE FULLY ASSEMBLED - ELECTRIC - SINGLE INTERLOCK | | |
| 2" Electric Single Interlock | 2DDXFS | \$ 8,137.00 |
| 2" Electric Single Interlock w/Control Valve | 2DDXFSV | \$ 8,899.00 |
| 2-1/2" Electric Single Interlock | 25DDXFS | \$ 8,137.00 |
| 2-1/2" Electric Single Interlock w/Control Valve | 25DDXFSV | \$ 8,899.00 |
| 3" Electric Single Interlock | 3DDXFS | \$ 8,391.00 |
| 3" Electric Single Interlock w/Control Valve | 3DDXFSV | \$ 9,154.00 |
| 4" Electric Single Interlock | 4DDXFS | \$ 8,518.00 |
| 4" Electric Single Interlock w/Control Valve | 4DDXFSV | \$ 9,281.00 |
| 6" Electric Single Interlock | 6DDXFS | \$ 9,281.00 |
| 6" Electric Single Interlock w/Control Valve | 6DDXFSV | \$ 10,552.00 |
| 8" Electric Single Interlock | 8DDXFS | \$ 12,480.00 |
| 8" Electric Single Interlock w/Control Valve | 8DDXFSV | \$ 14,812.00 |
| MODEL DDX - DELUGE VALVE FULLY ASSEMBLED - WET PILOT LINE - SINGLE INTERLOCK | | |
| 2" Single Interlock - Wet Pilot Line | 2DDXFWS | \$ 6,992.00 |
| 2" Single Interlock - Wet Pilot Line w/Control Valve | 2DDXFWSV | \$ 8,518.00 |
| 2-1/2" Single Interlock - Wet Pilot Line | 25DDXFWS | \$ 6,992.00 |
| 2-1/2" Single Interlock - Wet Pilot Line w/Control Valve | 25DDXFWSV | \$ 8,518.00 |
| 3" Single Interlock - Wet Pilot Line | 3DDXFWS | \$ 7,247.00 |
| 3" Single Interlock - Wet Pilot Line w/Control Valve | 3DDXFWSV | \$ 8,264.00 |
| 4" Single Interlock - Wet Pilot Line | 4DDXFWS | \$ 7,437.00 |
| 4" Single Interlock - Wet Pilot Line w/Control Valve | 4DDXFWSV | \$ 8,264.00 |
| 6" Single Interlock - Wet Pilot Line | 6DDXFWS | \$ 8,391.00 |
| 6" Single Interlock - Wet Pilot Line w/Control Valve | 6DDXFWSV | \$ 9,599.00 |
| 8" Single Interlock - Wet Pilot Line | 8DDXFWS | \$ 11,897.00 |
| 8" Single Interlock - Wet Pilot Line w/Control Valve | 8DDXFWSV | \$ 14,113.00 |
| MODEL DDX - DELUGE VALVE FULLY ASSEMBLED - DRY PILOT LINE - SINGLE INTERLOCK | | |
| 2" Single Interlock - Dry Pilot Line | 2DDXFDS | \$ 8,264.00 |
| 2" Single Interlock - Dry Pilot Line w/Control Valve | 2DDXFDSV | \$ 9,154.00 |
| 2-1/2" Single Interlock - Dry Pilot Line | 25DDXFDS | \$ 8,264.00 |
| 2-1/2" Single Interlock - Dry Pilot Line w/Control Valve | 25DDXFDSV | \$ 9,154.00 |
| 3" Single Interlock - Dry Pilot Line | 3DDXFDS | \$ 8,518.00 |
| 3" Single Interlock - Dry Pilot Line w/Control Valve | 3DDXFDSV | \$ 9,408.00 |
| 4" Single Interlock - Dry Pilot Line | 4DDXFDS | \$ 8,645.00 |
| 4" Single Interlock - Dry Pilot Line w/Control Valve | 4DDXFDSV | \$ 9,408.00 |
| 6" Single Interlock - Dry Pilot Line | 6DDXFDS | \$ 9,599.00 |
| 6" Single Interlock - Dry Pilot Line w/Control Valve | 6DDXFDSV | \$ 10,870.00 |
| 8" Single Interlock - Dry Pilot Line | 8DDXFDS | \$ 12,713.00 |
| 8" Single Interlock - Dry Pilot Line w/Control Valve | 8DDXFDSV | \$ 15,396.00 |



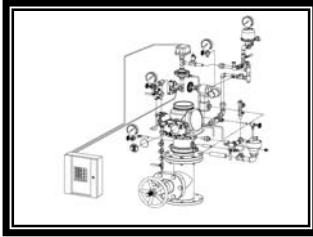
**Preaction
Systems with
our DDX Valve**

SPECIAL HAZARDS

SPECIAL SYSTEMS

- See Bulletins 736, 727, 743, 734, 731, 741, 735, 732, 742, 730, 737, 738 728, 729, 744, 745

| Description | Part Number | List Price |
|---|-------------|--------------|
| MODEL DDX - DELUGE VALVE FULLY ASSEMBLED - DOUBLE INTERLOCK - TYPE D | | |
| 2" Double Type D | 2DDXFD | \$ 10,298.00 |
| 2" Double Type D w/Control Valve | 2DDXFDV | \$ 11,188.00 |
| 2-1/2" Double Type D | 25DDXFD | \$ 10,298.00 |
| 2-12" Double Type D w/Control Valve | 25DDXFDV | \$ 11,188.00 |
| 165MM, DDX, Valve, w/ Dry Pilot line | 3DDXFD | \$ 10,425.00 |
| 3" Double Type D w/Control Valve | 3DDXFDV | \$ 11,315.00 |
| 4" Double Type D | 4DDXFD | \$ 10,527.00 |
| 4" Double Type D w/Control Valve | 4DDXFDV | \$ 11,355.00 |
| 6" Double Type D | 6DDXFD | \$ 11,582.00 |
| 6" Double Type D w/Control Valve | 6DDXFDV | \$ 12,819.00 |
| 8" Double Type D | 8DDXFD | \$ 13,646.00 |
| 8" Double Type D w/Control Valve | 8DDXFDV | \$ 16,095.00 |
| MODEL DDX - DELUGE VALVE FULLY ASSEMBLED - DOUBLE INTERLOCK - TYPE F | | |
| 2" Double Type F | 2DDXFF | \$ 10,679.00 |
| 2" Double Type F w/Control Valve | 2DDXFFV | \$ 11,569.00 |
| 2-1/2" Double Type F | 25DDXFF | \$ 10,679.00 |
| 2-12" Double Type F w/Control Valve | 25DDXFFV | \$ 11,569.00 |
| 3" Double Type F | 3DDXFF | \$ 10,679.00 |
| 3" Double Type F w/Control Valve | 3DDXFFV | \$ 11,569.00 |
| 4" Double Type F | 4DDXFF | \$ 10,771.00 |
| 4" Double Type F w/Control Valve | 4DDXFFV | \$ 11,676.00 |
| 6" Double Type F | 6DDXFF | \$ 11,881.00 |
| 6" Double Type F w/Control Valve | 6DDXFFV | \$ 13,119.00 |
| 8" Double Type F | 8DDXFF | \$ 14,579.00 |
| 8" Double Type F w/Control Valve | 8DDXFFV | \$ 16,095.00 |



Preaction Systems with our DDX Valve

SPECIAL HAZARDS SPECIAL SYSTEMS

- See Bulletins 736, 727, 743, 734, 731, 741, 735, 732, 742, 730, 737, 738, 728, 729, 744, 745

| Description | Part Number | List Price |
|--|-------------|-------------|
| PREACTION TRIM — SINGLE INTERLOCK - SEGMENTALLY ASSEMBLED | | |
| Wet Pilot Line 2", 2-1/2" & 3" | 25DDXWSP | \$ 2,379.00 |
| Wet Pilot Line 4" & 6" | 4DDXWSP | \$ 2,379.00 |
| Wet Pilot Line 8" | 8DDXWSP | \$ 4,666.00 |
| Dry Pilot Line 2", 2-1/2" & 3" | 25DDXDSP | \$ 3,629.00 |
| Dry Pilot Line 4" & 6" | 4DDXDSP | \$ 3,629.00 |
| Dry Pilot Line 8" | 8DDXDSP | \$ 5,599.00 |
| Electric Release 2", 2-1/2" & 3" | 25DDXESP | \$ 3,383.00 |
| Electric Release 4" & 6" | 4DDXESP | \$ 3,383.00 |
| Electric Release 8" | 8DDXESP | \$ 4,432.00 |
| PREACTION TRIM — SINGLE INTERLOCK - INDIVIDUAL PARTS | | |
| Wet Pilot Line 2", 2-1/2" & 3" | 25DDXWSL | \$ 2,130.00 |
| Wet Pilot Line 4" & 6" | 4DDXWSL | \$ 2,131.00 |
| Wet Pilot Line 8" | 8DDXWSL | \$ 2,800.00 |
| Dry Pilot Line 2", 2-1/2" & 3" | 25DDXDSDL | \$ 3,392.00 |
| Dry Pilot Line 4" & 6" | 4DDXDSDL | \$ 3,392.00 |
| Dry Pilot Line 8" | 8DDXDSDL | \$ 4,549.00 |
| Electric Release 1-1/2" | 15PTSL | \$ 1,066.00 |
| Electric Release 2", 2-1/2" & 3" | 25DDXESL | \$ 3,130.00 |
| Electric Release 4" & 6" | 4DDXESL | \$ 3,130.00 |
| Electric Release 8" | 8DDXESL | \$ 3,266.00 |
| PREACTION TRIM — DOUBLE INTERLOCK - INDIVIDUAL PARTS | | |
| 1-1/2" Type D | 15PTDL | \$ 2,615.00 |
| 2", 2-1/2" & 3" Type D | 25DDXDL | \$ 5,346.00 |
| 4" & 6" Type D | 4DDXDL | \$ 5,346.00 |
| 8" Type D | 8DDXDL | \$ 5,346.00 |
| 2", 2-1/2" & 3" Type F | 25DDXFL | \$ 5,655.00 |
| 4" & 6" Type F | 4DDXFL | \$ 5,655.00 |
| 8" Type F | 8DDXFL | \$ 5,655.00 |
| PREACTION TRIM — DOUBLE INTERLOCK - SEGMENTALLY ASSEMBLED | | |
| 2", 2-1/2" & 3" Type D | 25DDXDP | \$ 5,678.00 |
| 4" & 6" Type D | 4DDXDP | \$ 5,679.00 |
| 8" Type D | 8DDXDP | \$ 5,715.00 |
| 2", 2-1/2" & 3" Type F | 25DDXFP | \$ 5,987.00 |
| 4" & 6" Type F | 4DDXFP | \$ 5,987.00 |
| 8" Type F | 8DDXFP | \$ 6,182.00 |

Special Hazards
Special Systems