



**DDX Deluge Valve**



**DDX Deluge Valve Stainless Steel - 8" Size**

Description	Part Number	List Price
<b>MODEL DDX - DELUGE VALVES FULLY ASSEMBLED - ELECTRIC TRIM</b>		
2" Electric Release	2DDXFE	\$ 7,882.00
2" Electric Release w/Control Valve	2DDXFEV	\$ 8,772.00
2-1/2" Electric Release	25DDXFE	\$ 7,882.00
2-1/2" Electric Release w/Control Valve	25DDXFEV	\$ 8,772.00
3" Electric Release	3DDXFE	\$ 8,137.00
3" Electric Release w/Control Valve	3DDXFEV	\$ 8,899.00
76MM Electric Release	6505027611	\$ 8,137.00
4" Electric Release	4DDXFE	\$ 8,146.00
4" Electric Release w/Control Valve	4DDXFEV	\$ 9,029.00
6" Electric Release	6DDXFE	\$ 9,099.00
6" Electric Release w/Control Valve	6DDXFEV	\$ 10,335.00
165MM, DDX, Valve, w/Electric	6505065211	\$ 9,099.00
8" Electric Release	8DDXFE	\$ 12,363.00
8" Electric Release w/Control Valve	8DDXFEV	\$ 14,463.00
8" Stainless Steel Electric Release	8DDXSSFE	\$ 28,575.00
<b>MODEL DDX - DELUGE VALVES FULLY ASSEMBLED - WET PILOT LINE TRIM</b>		
2" Wet Pilot Line	2DDXFW	\$ 6,738.00
2" Wet Pilot Line w/Control Valve	2DDXFWV	\$ 7,628.00
2-1/2" Wet Pilot Line	25DDXFW	\$ 6,738.00
2-1/2" Wet Pilot Line w/Control Valve	25DDXFWV	\$ 7,628.00
3" Wet Pilot Line	3DDXFW	\$ 6,992.00
3" Wet Pilot Line w/Control Valve	3DDXFWV	\$ 7,882.00
76MM Wet Pilot Line	6505027601	\$ 6,992.00
4" Wet Pilot Line	4DDXFW	\$ 7,169.00
4" Wet Pilot Line w/Control Valve	4DDXFWV	\$ 8,053.00
6" Wet Pilot Line	6DDXFW	\$ 8,122.00
6" Wet Pilot Line w/Control Valve	6DDXFWV	\$ 9,361.00
165MM, DDX, Valve, w/Wet Pilot	6505065201	\$ 8,122.00
8" Wet Pilot Line	8DDXFW	\$ 12,013.00
8" Wet Pilot Line w/Control Valve	8DDXFWV	\$ 14,579.00
8" Stainless Steel Wet Pilot Line	8DDXSSFW	\$ 27,409.00
<b>MODEL DDX - DELUGE VALVES FULLY ASSEMBLED - DRY PILOT LINE TRIM</b>		
2" Dry Pilot Line	2DDXFDP	\$ 8,009.00
2" Dry Pilot Line w/Control Valve	2DDXFDPV	\$ 8,899.00
2-1/2" Dry Pilot Line	25DDXFDP	\$ 8,009.00
2-1/2" Dry Pilot Line w/Control Valve	25DDXFDPV	\$ 8,899.00
3" Dry Pilot Line	3DDXFDP	\$ 8,264.00
3" Dry Pilot Line w/Control Valve	3DDXFDPV	\$ 9,154.00
76MM Dry Pilot Line	6505027606	\$ 8,264.00
4" Dry Pilot Line	4DDXFDP	\$ 8,384.00
4" Dry Pilot Line w/Control Valve	4DDXFDPV	\$ 9,269.00
6" Dry Pilot Line	6DDXFDP	\$ 9,338.00
6" Dry Pilot Line w/Control Valve	6DDXFDPV	\$ 10,576.00
165MM, DDX, Valve, w/ Dry Pilot line	6505065206	\$ 9,338.00
8" Dry Pilot Line	8DDXFDP	\$ 12,597.00
8" Dry Pilot Line w/Control Valve	8DDXFDPV	\$ 15,396.00
8" Stainless Steel Dry Pilot Line	8DDXSSFDP	\$ 31,491.00

**SPECIAL HAZARDS**

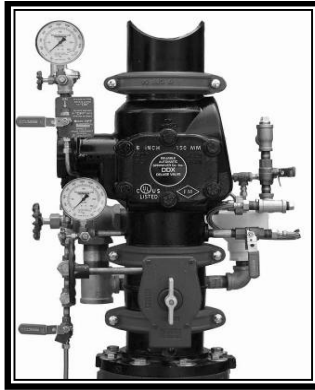
**SPECIAL SYSTEMS**

- See Bulletins 512, 510, 514 (DDX Deluge Valve)
- See Bulletin 516 (DDX Valve Stainless Steel)
- See Bulletins 736, 727, 743, 731, 741, 735, 732, 742 (Single Interlock)
- See Bulletins 737, 738, 728, 729, 744, 745 (Double Interlock)

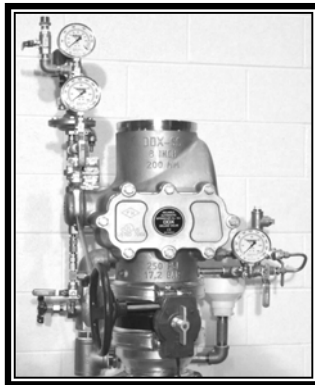
**Please note:**

250 psi and ULC Listed also available upon request

Special Hazards  
Special Systems



**DDX Deluge Valve**



**DDX Deluge Valve Stainless Steel - 8" Size**

Description	Part Number	List Price
<b>MODEL DDX - DELUGE VALVE ONLY (GROOVED X GROOVED)</b>		
Model DDX - 2"	2DDX	\$ 3,941.00
Model DDX - 2-1/2"	25DDX	\$ 3,941.00
Model DDX - 3"	3DDX	\$ 4,068.00
Model DDX - 76MM	76DDX	\$ 4,068.00
Model DDX - 4"	4DDX	\$ 4,158.00
Model DDX - 6"	6DDX	\$ 5,111.00
Model 165MM	6103060028	\$ 5,111.00
Model DDX - 8"	8DDX	\$ 8,491.00
Model DDX Stainless Steel - 8"	8DDXSS	\$ 18,078.00
<b>1-1/2" DELUGE / PREACTION RISER ASSEMBLIES</b>		
Model H(65030030001)	15D	\$ 5,130.00
Solenoid Valve Repair Kit	SVRK	\$ 1,896.00
<b>DELUGE TRIM ONLY — SEGMENTALLY ASSEMBLED</b>		
Wet Pilot Line 2", 2-1/2" & 3"	25DDXWP	\$ 2,125.00
Wet Pilot Line 4" & 6"	4DDXWP	\$ 2,125.00
Wet Pilot Line 8"	8DDXWP	\$ 3,733.00
Wet Pilot Line 8" Stainless Steel	8DDXSSWP	\$ 8,864.00
Dry Pilot Line 2", 2-1/2" & 3"	25DDXDPP	\$ 3,374.00
Dry Pilot Line 4" & 6"	4DDXDPP	\$ 3,373.00
Dry Pilot Line 8"	8DDXDPP	\$ 5,132.00
Dry Pilot Line 8" Stainless Steel	8DDXSSDPP	\$ 12,480.00
Electric Release 2", 2-1/2" & 3"	25DDXEP	\$ 3,129.00
Electric Release 4" & 6"	4DDXEP	\$ 3,128.00
Electric Release 8"	8DDXEP	\$ 4,432.00
Electric Release 8" Stainless Steel	8DDXSSEP	\$ 10,322.00
<b>DELUGE TRIM ONLY — INDIVIDUAL PARTS</b>		
Wet Pilot Line 2", 2-1/2" & 3"	25DDXWL	\$ 1,997.00
Wet Pilot Line 4" & 6"	4DDXWL	\$ 1,997.00
Wet Pilot Line 8"	8DDXWL	\$ 2,566.00
Wet Pilot Line 8" Stainless Steel	8DDXSSWL	\$ 7,581.00
Dry Pilot Line 2", 2-1/2" & 3"	25DDXDPL	\$ 3,137.00
Dry Pilot Line 4" & 6"	4DDXDPL	\$ 3,137.00
Dry Pilot Line 8"	8DDXDPL	\$ 3,966.00
Dry Pilot Line 8" Stainless Steel	8DDXSSDPL	\$ 11,314.00
Electric Release 2", 2-1/2" & 3"	25DDXEL	\$ 2,876.00
Electric Release 4" & 6"	4DDXEL	\$ 2,876.00
Electric Release 8"	8DDXEL	\$ 3,499.00
Electric Release 8" Stainless Steel	8DDXSSEL	\$ 9,098.00

SPECIAL HAZARDS

SPECIAL SYSTEMS

- See Bulletins 512, 510, 514 (DDX Deluge Valve)
- See Bulletin 516 (DDX Valve Stainless Steel)
- See Bulletins 736, 727, 743, 731, 741, 735, 732, 742 (Single Interlock)
- See Bulletins 737, 738, 728, 729, 744, 745 (Double Interlock)

Special Hazards  
Special Systems