



DDX Deluge Valve



DDX Deluge Valve Stainless Steel - 8" Size

| Description | Part Number | List Price |
|--|-------------|--------------|
| MODEL DDX - DELUGE VALVES FULLY ASSEMBLED - ELECTRIC TRIM | | |
| 2" Electric Release | 2DDXFE | \$ 7,882.00 |
| 2" Electric Release w/Control Valve | 2DDXFEV | \$ 8,772.00 |
| 2-1/2" Electric Release | 25DDXFE | \$ 7,882.00 |
| 2-1/2" Electric Release w/Control Valve | 25DDXFEV | \$ 8,772.00 |
| 3" Electric Release | 3DDXFE | \$ 8,137.00 |
| 3" Electric Release w/Control Valve | 3DDXFEV | \$ 8,899.00 |
| 76MM Electric Release | 6505027611 | \$ 8,137.00 |
| 4" Electric Release | 4DDXFE | \$ 8,146.00 |
| 4" Electric Release w/Control Valve | 4DDXFEV | \$ 9,029.00 |
| 6" Electric Release | 6DDXFE | \$ 9,099.00 |
| 6" Electric Release w/Control Valve | 6DDXFEV | \$ 10,335.00 |
| 165MM, DDX, Valve, w/Electric | 6505065211 | \$ 9,099.00 |
| 8" Electric Release | 8DDXFE | \$ 12,363.00 |
| 8" Electric Release w/Control Valve | 8DDXFEV | \$ 14,463.00 |
| 8" Stainless Steel Electric Release | 8DDXSSFE | \$ 28,575.00 |
| MODEL DDX - DELUGE VALVES FULLY ASSEMBLED - WET PILOT LINE TRIM | | |
| 2" Wet Pilot Line | 2DDXFW | \$ 6,738.00 |
| 2" Wet Pilot Line w/Control Valve | 2DDXFWV | \$ 7,628.00 |
| 2-1/2" Wet Pilot Line | 25DDXFW | \$ 6,738.00 |
| 2-1/2" Wet Pilot Line w/Control Valve | 25DDXFWV | \$ 7,628.00 |
| 3" Wet Pilot Line | 3DDXFW | \$ 6,992.00 |
| 3" Wet Pilot Line w/Control Valve | 3DDXFWV | \$ 7,882.00 |
| 76MM Wet Pilot Line | 6505027601 | \$ 6,992.00 |
| 4" Wet Pilot Line | 4DDXFW | \$ 7,169.00 |
| 4" Wet Pilot Line w/Control Valve | 4DDXFWV | \$ 8,053.00 |
| 6" Wet Pilot Line | 6DDXFW | \$ 8,122.00 |
| 6" Wet Pilot Line w/Control Valve | 6DDXFWV | \$ 9,361.00 |
| 165MM, DDX, Valve, w/Wet Pilot | 6505065201 | \$ 8,122.00 |
| 8" Wet Pilot Line | 8DDXFW | \$ 12,013.00 |
| 8" Wet Pilot Line w/Control Valve | 8DDXFWV | \$ 14,579.00 |
| 8" Stainless Steel Wet Pilot Line | 8DDXSSFW | \$ 27,409.00 |
| MODEL DDX - DELUGE VALVES FULLY ASSEMBLED - DRY PILOT LINE TRIM | | |
| 2" Dry Pilot Line | 2DDXFDP | \$ 8,009.00 |
| 2" Dry Pilot Line w/Control Valve | 2DDXFDPV | \$ 8,899.00 |
| 2-1/2" Dry Pilot Line | 25DDXFDP | \$ 8,009.00 |
| 2-1/2" Dry Pilot Line w/Control Valve | 25DDXFDPV | \$ 8,899.00 |
| 3" Dry Pilot Line | 3DDXFDP | \$ 8,264.00 |
| 3" Dry Pilot Line w/Control Valve | 3DDXFDPV | \$ 9,154.00 |
| 76MM Dry Pilot Line | 6505027606 | \$ 8,264.00 |
| 4" Dry Pilot Line | 4DDXFDP | \$ 8,384.00 |
| 4" Dry Pilot Line w/Control Valve | 4DDXFDPV | \$ 9,269.00 |
| 6" Dry Pilot Line | 6DDXFDP | \$ 9,338.00 |
| 6" Dry Pilot Line w/Control Valve | 6DDXFDPV | \$ 10,576.00 |
| 165MM, DDX, Valve, w/ Dry Pilot line | 6505065206 | \$ 9,338.00 |
| 8" Dry Pilot Line | 8DDXFDP | \$ 12,597.00 |
| 8" Dry Pilot Line w/Control Valve | 8DDXFDPV | \$ 15,396.00 |
| 8" Stainless Steel Dry Pilot Line | 8DDXSS FDP | \$ 31,491.00 |

SPECIAL HAZARDS

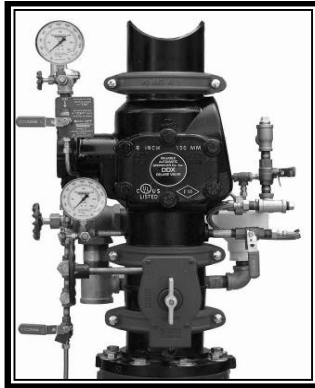
SPECIAL SYSTEMS

- See Bulletins 512, 510, 514 (DDX Deluge Valve)
- See Bulletin 516 (DDX Valve Stainless Steel)
- See Bulletins 736, 727, 743, 731, 741, 735, 732, 742 (Single Interlock)
- See Bulletins 737, 738, 728, 729, 744, 745 (Double Interlock)

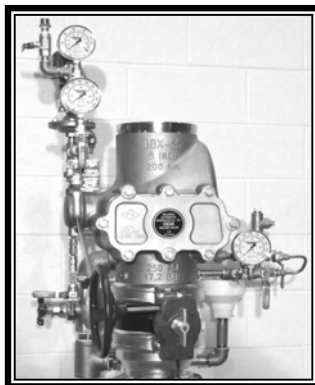
Please note:

250 psi and ULC Listed also available upon request

Special Hazards
Special Systems



DDX Deluge Valve



DDX Deluge Valve Stainless Steel - 8" Size

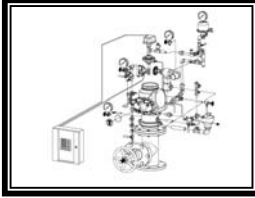
| Description | Part Number | List Price |
|--|-------------|--------------|
| MODEL DDX - DELUGE VALVE ONLY (GROOVED X GROOVED) | | |
| Model DDX - 2" | 2DDX | \$ 3,941.00 |
| Model DDX - 2-1/2" | 25DDX | \$ 3,941.00 |
| Model DDX - 3" | 3DDX | \$ 4,068.00 |
| Model DDX - 76MM | 76DDX | \$ 4,068.00 |
| Model DDX - 4" | 4DDX | \$ 4,158.00 |
| Model DDX - 6" | 6DDX | \$ 5,111.00 |
| Model 165MM | 6103060028 | \$ 5,111.00 |
| Model DDX - 8" | 8DDX | \$ 8,491.00 |
| Model DDX Stainless Steel - 8" | 8DDXSS | \$ 18,078.00 |
| 1-1/2" DELUGE / PREACTION RISER ASSEMBLIES | | |
| Model H(65030030001) | 15D | \$ 5,130.00 |
| Solenoid Valve Repair Kit | SVRK | \$ 1,896.00 |
| DELUGE TRIM ONLY — SEGMENTALLY ASSEMBLED | | |
| Wet Pilot Line 2", 2-1/2" & 3" | 25DDXWP | \$ 2,125.00 |
| Wet Pilot Line 4" & 6" | 4DDXWP | \$ 2,125.00 |
| Wet Pilot Line 8" | 8DDXWP | \$ 3,733.00 |
| Wet Pilot Line 8" Stainless Steel | 8DDXSSWP | \$ 8,864.00 |
| Dry Pilot Line 2", 2-1/2" & 3" | 25DDXDPP | \$ 3,374.00 |
| Dry Pilot Line 4" & 6" | 4DDXDPP | \$ 3,373.00 |
| Dry Pilot Line 8" | 8DDXDPP | \$ 5,132.00 |
| Dry Pilot Line 8" Stainless Steel | 8DDXSSDPP | \$ 12,480.00 |
| Electric Release 2", 2-1/2" & 3" | 25DDXEP | \$ 3,129.00 |
| Electric Release 4" & 6" | 4DDXEP | \$ 3,128.00 |
| Electric Release 8" | 8DDXEP | \$ 4,432.00 |
| Electric Release 8" Stainless Steel | 8DDXSSEP | \$ 10,322.00 |
| DELUGE TRIM ONLY — INDIVIDUAL PARTS | | |
| Wet Pilot Line 2", 2-1/2" & 3" | 25DDXWL | \$ 1,997.00 |
| Wet Pilot Line 4" & 6" | 4DDXWL | \$ 1,997.00 |
| Wet Pilot Line 8" | 8DDXWL | \$ 2,566.00 |
| Wet Pilot Line 8" Stainless Steel | 8DDXSSWL | \$ 7,581.00 |
| Dry Pilot Line 2", 2-1/2" & 3" | 25DDXDPL | \$ 3,137.00 |
| Dry Pilot Line 4" & 6" | 4DDXDPL | \$ 3,137.00 |
| Dry Pilot Line 8" | 8DDXDPL | \$ 3,966.00 |
| Dry Pilot Line 8" Stainless Steel | 8DDXSSDPL | \$ 11,314.00 |
| Electric Release 2", 2-1/2" & 3" | 25DDXEL | \$ 2,876.00 |
| Electric Release 4" & 6" | 4DDXEL | \$ 2,876.00 |
| Electric Release 8" | 8DDXEL | \$ 3,499.00 |
| Electric Release 8" Stainless Steel | 8DDXSSEL | \$ 9,098.00 |

SPECIAL HAZARDS

SPECIAL SYSTEMS

- See Bulletins 512, 510, 514 (DDX Deluge Valve)
- See Bulletin 516 (DDX Valve Stainless Steel)
- See Bulletins 736, 727, 743, 731, 741, 735, 732, 742 (Single Interlock)
- See Bulletins 737, 738, 728, 729, 744, 745 (Double Interlock)

Special Hazards
Special Systems



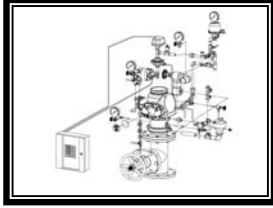
**Preaction
Systems with
our DDX Valve**

SPECIAL HAZARDS

SPECIAL SYSTEMS

- See Bulletins 736, 727, 743, 734, 731, 741, 735, 732, 742, 730, 737, 738, 728, 729, 744, 745

| Description | Part Number | List Price |
|---|-------------|--------------|
| MODEL DDX - DELUGE VALVE FULLY ASSEMBLED - ELECTRIC - SINGLE INTERLOCK | | |
| 2" Electric Single Interlock | 2DDXFS | \$ 8,137.00 |
| 2" Electric Single Interlock w/Control Valve | 2DDXFSV | \$ 8,899.00 |
| 2-1/2" Electric Single Interlock | 25DDXFS | \$ 8,137.00 |
| 2-1/2" Electric Single Interlock w/Control Valve | 25DDXFSV | \$ 8,899.00 |
| 3" Electric Single Interlock | 3DDXFS | \$ 8,391.00 |
| 3" Electric Single Interlock w/Control Valve | 3DDXFSV | \$ 9,154.00 |
| 4" Electric Single Interlock | 4DDXFS | \$ 8,518.00 |
| 4" Electric Single Interlock w/Control Valve | 4DDXFSV | \$ 9,281.00 |
| 6" Electric Single Interlock | 6DDXFS | \$ 9,281.00 |
| 6" Electric Single Interlock w/Control Valve | 6DDXFSV | \$ 10,552.00 |
| 8" Electric Single Interlock | 8DDXFS | \$ 12,480.00 |
| 8" Electric Single Interlock w/Control Valve | 8DDXFSV | \$ 14,812.00 |
| MODEL DDX - DELUGE VALVE FULLY ASSEMBLED - WET PILOT LINE - SINGLE INTERLOCK | | |
| 2" Single Interlock - Wet Pilot Line | 2DDXFWS | \$ 6,992.00 |
| 2" Single Interlock - Wet Pilot Line w/Control Valve | 2DDXFWSV | \$ 8,518.00 |
| 2-1/2" Single Interlock - Wet Pilot Line | 25DDXFWS | \$ 6,992.00 |
| 2-1/2" Single Interlock - Wet Pilot Line w/Control Valve | 25DDXFWSV | \$ 8,518.00 |
| 3" Single Interlock - Wet Pilot Line | 3DDXFWS | \$ 7,247.00 |
| 3" Single Interlock - Wet Pilot Line w/Control Valve | 3DDXFWSV | \$ 8,264.00 |
| 4" Single Interlock - Wet Pilot Line | 4DDXFWS | \$ 7,437.00 |
| 4" Single Interlock - Wet Pilot Line w/Control Valve | 4DDXFWSV | \$ 8,264.00 |
| 6" Single Interlock - Wet Pilot Line | 6DDXFWS | \$ 8,391.00 |
| 6" Single Interlock - Wet Pilot Line w/Control Valve | 6DDXFWSV | \$ 9,599.00 |
| 8" Single Interlock - Wet Pilot Line | 8DDXFWS | \$ 11,897.00 |
| 8" Single Interlock - Wet Pilot Line w/Control Valve | 8DDXFWSV | \$ 14,113.00 |
| MODEL DDX - DELUGE VALVE FULLY ASSEMBLED - DRY PILOT LINE - SINGLE INTERLOCK | | |
| 2" Single Interlock - Dry Pilot Line | 2DDXFDS | \$ 8,264.00 |
| 2" Single Interlock - Dry Pilot Line w/Control Valve | 2DDXFDSV | \$ 9,154.00 |
| 2-1/2" Single Interlock - Dry Pilot Line | 25DDXFDS | \$ 8,264.00 |
| 2-1/2" Single Interlock - Dry Pilot Line w/Control Valve | 25DDXFDSV | \$ 9,154.00 |
| 3" Single Interlock - Dry Pilot Line | 3DDXFDS | \$ 8,518.00 |
| 3" Single Interlock - Dry Pilot Line w/Control Valve | 3DDXFDSV | \$ 9,408.00 |
| 4" Single Interlock - Dry Pilot Line | 4DDXFDS | \$ 8,645.00 |
| 4" Single Interlock - Dry Pilot Line w/Control Valve | 4DDXFDSV | \$ 9,408.00 |
| 6" Single Interlock - Dry Pilot Line | 6DDXFDS | \$ 9,599.00 |
| 6" Single Interlock - Dry Pilot Line w/Control Valve | 6DDXFDSV | \$ 10,870.00 |
| 8" Single Interlock - Dry Pilot Line | 8DDXFDS | \$ 12,713.00 |
| 8" Single Interlock - Dry Pilot Line w/Control Valve | 8DDXFDSV | \$ 15,396.00 |



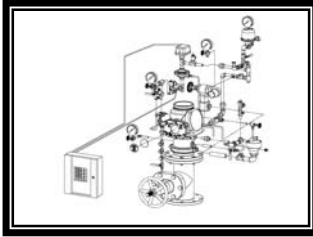
**Preaction
Systems with
our DDX Valve**

SPECIAL HAZARDS

SPECIAL SYSTEMS

- See Bulletins 736, 727, 743, 734, 731, 741, 735, 732, 742, 730, 737, 738 728, 729, 744, 745

| Description | Part Number | List Price |
|---|-------------|--------------|
| MODEL DDX - DELUGE VALVE FULLY ASSEMBLED - DOUBLE INTERLOCK - TYPE D | | |
| 2" Double Type D | 2DDXFD | \$ 10,298.00 |
| 2" Double Type D w/Control Valve | 2DDXFDV | \$ 11,188.00 |
| 2-1/2" Double Type D | 25DDXFD | \$ 10,298.00 |
| 2-12" Double Type D w/Control Valve | 25DDXFDV | \$ 11,188.00 |
| 165MM, DDX, Valve, w/ Dry Pilot line | 3DDXFD | \$ 10,425.00 |
| 3" Double Type D w/Control Valve | 3DDXFDV | \$ 11,315.00 |
| 4" Double Type D | 4DDXFD | \$ 10,527.00 |
| 4" Double Type D w/Control Valve | 4DDXFDV | \$ 11,355.00 |
| 6" Double Type D | 6DDXFD | \$ 11,582.00 |
| 6" Double Type D w/Control Valve | 6DDXFDV | \$ 12,819.00 |
| 8" Double Type D | 8DDXFD | \$ 13,646.00 |
| 8" Double Type D w/Control Valve | 8DDXFDV | \$ 16,095.00 |
| MODEL DDX - DELUGE VALVE FULLY ASSEMBLED - DOUBLE INTERLOCK - TYPE F | | |
| 2" Double Type F | 2DDXFF | \$ 10,679.00 |
| 2" Double Type F w/Control Valve | 2DDXFFV | \$ 11,569.00 |
| 2-1/2" Double Type F | 25DDXFF | \$ 10,679.00 |
| 2-12" Double Type F w/Control Valve | 25DDXFFV | \$ 11,569.00 |
| 3" Double Type F | 3DDXFF | \$ 10,679.00 |
| 3" Double Type F w/Control Valve | 3DDXFFV | \$ 11,569.00 |
| 4" Double Type F | 4DDXFF | \$ 10,771.00 |
| 4" Double Type F w/Control Valve | 4DDXFFV | \$ 11,676.00 |
| 6" Double Type F | 6DDXFF | \$ 11,881.00 |
| 6" Double Type F w/Control Valve | 6DDXFFV | \$ 13,119.00 |
| 8" Double Type F | 8DDXFF | \$ 14,579.00 |
| 8" Double Type F w/Control Valve | 8DDXFFV | \$ 16,095.00 |



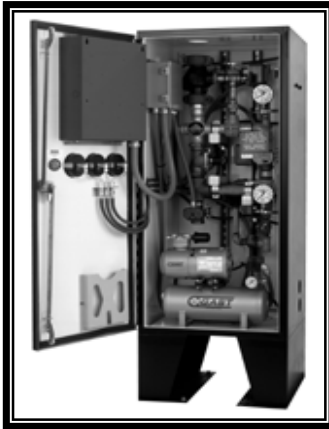
Preaction Systems with our DDX Valve

SPECIAL HAZARDS SPECIAL SYSTEMS

- See Bulletins 736, 727, 743, 734, 731, 741, 735, 732, 742, 730, 737, 738, 728, 729, 744, 745

| Description | Part Number | List Price |
|--|-------------|-------------|
| PREACTION TRIM — SINGLE INTERLOCK - SEGMENTALLY ASSEMBLED | | |
| Wet Pilot Line 2", 2-1/2" & 3" | 25DDXWSP | \$ 2,379.00 |
| Wet Pilot Line 4" & 6" | 4DDXWSP | \$ 2,379.00 |
| Wet Pilot Line 8" | 8DDXWSP | \$ 4,666.00 |
| Dry Pilot Line 2", 2-1/2" & 3" | 25DDXDSP | \$ 3,629.00 |
| Dry Pilot Line 4" & 6" | 4DDXDSP | \$ 3,629.00 |
| Dry Pilot Line 8" | 8DDXDSP | \$ 5,599.00 |
| Electric Release 2", 2-1/2" & 3" | 25DDXESP | \$ 3,383.00 |
| Electric Release 4" & 6" | 4DDXESP | \$ 3,383.00 |
| Electric Release 8" | 8DDXESP | \$ 4,432.00 |
| PREACTION TRIM — SINGLE INTERLOCK - INDIVIDUAL PARTS | | |
| Wet Pilot Line 2", 2-1/2" & 3" | 25DDXWSL | \$ 2,130.00 |
| Wet Pilot Line 4" & 6" | 4DDXWSL | \$ 2,131.00 |
| Wet Pilot Line 8" | 8DDXWSL | \$ 2,800.00 |
| Dry Pilot Line 2", 2-1/2" & 3" | 25DDXDSDL | \$ 3,392.00 |
| Dry Pilot Line 4" & 6" | 4DDXDSDL | \$ 3,392.00 |
| Dry Pilot Line 8" | 8DDXDSDL | \$ 4,549.00 |
| Electric Release 1-1/2" | 15PTSL | \$ 1,066.00 |
| Electric Release 2", 2-1/2" & 3" | 25DDXESL | \$ 3,130.00 |
| Electric Release 4" & 6" | 4DDXESL | \$ 3,130.00 |
| Electric Release 8" | 8DDXESL | \$ 3,266.00 |
| PREACTION TRIM — DOUBLE INTERLOCK - INDIVIDUAL PARTS | | |
| 1-1/2" Type D | 15PTDL | \$ 2,615.00 |
| 2", 2-1/2" & 3" Type D | 25DDXDL | \$ 5,346.00 |
| 4" & 6" Type D | 4DDXDL | \$ 5,346.00 |
| 8" Type D | 8DDXDL | \$ 5,346.00 |
| 2", 2-1/2" & 3" Type F | 25DDXFL | \$ 5,655.00 |
| 4" & 6" Type F | 4DDXFL | \$ 5,655.00 |
| 8" Type F | 8DDXFL | \$ 5,655.00 |
| PREACTION TRIM — DOUBLE INTERLOCK - SEGMENTALLY ASSEMBLED | | |
| 2", 2-1/2" & 3" Type D | 25DDXDP | \$ 5,678.00 |
| 4" & 6" Type D | 4DDXDP | \$ 5,679.00 |
| 8" Type D | 8DDXDP | \$ 5,715.00 |
| 2", 2-1/2" & 3" Type F | 25DDXFP | \$ 5,987.00 |
| 4" & 6" Type F | 4DDXFP | \$ 5,987.00 |
| 8" Type F | 8DDXFP | \$ 6,182.00 |

Special Hazards
Special Systems



SPECIAL HAZARDS

SPECIAL SYSTEMS

- **The PrePaK System**
- **See Bulletins 723, 724, 725 740 & 733**

| Description | Part Number | List Price |
|---|-------------|--------------|
| PREPAK SYSTEM | | |
| PrePaK 1-1/2" | 15PREPAK | \$ 40,330.00 |
| PrePaK with 2" DDX Valve | 2DDXPAK | \$ 41,420.00 |
| PrePaK with 2-1/2" DDX Valve | 25DDXPAK | \$ 41,965.00 |
| PrePaK with 3" DDX Valve | 3DDXPAK | \$ 43,600.00 |
| PrePaK with 4" DDX Valve | 4DDXPAK | \$ 45,889.00 |
| PrePaK with 6" DDX Valve and 3/4" HP Air Compressor | 6DDXPAK | \$ 52,211.00 |
| PrePaK with 6" DDX Valve and 1-1/2" HP Air Compressor | 6DDXPAK15 | \$ 55,045.00 |
| PrePaK 1-1/2" — For Canada | 15PREPAKC | \$ 40,330.00 |
| PrePaK with 2" DDX Valve — For Canada | 2DDXPAKC | \$ 41,420.00 |
| PrePaK with 2-1/2" DDX Valve — For Canada | 25DDXPAKC | \$ 41,965.00 |
| PrePaK with 3" DDX Valve — For Canada | 3DDXPAKC | \$ 43,600.00 |
| PrePaK with 4" DDX Valve — For Canada | 4DDXPAKC | \$ 45,889.00 |
| PrePaK w-6" DDX & 3/4" HP Air Comp — For Canada | 6DDXPAKC | \$ 52,211.00 |
| PrePaK w-6" DDX & 1-1/2" HP Air Comp — For Canada | 6DDXPAKC15 | \$ 55,045.00 |

- Our PrePaKs are smaller in size and weight –**up to 33% smaller and over 300 lbs. lighter than the competition**
- Now available in smaller sizes – 2", 2 ½", and 3" – as well as 4" and 6"
- Our DDX PrePaKs are cULus Listed and FM Approved
- Potter – PFC-4410-RC Releasing Control Panel (Single or Double Interlock by a simple program selection)
- Retains UL Listing when using an external UL Listed Releasing Control Panel
- Complete with Tank & Air Compressor
- Weighs less & is smaller in size than the previous BX versions
- Fits through a 30" x 69" Opening
- Refer to Bulletins 740 and 733

Please note:

220 Volt & 250 psi PrePaKs are available as special orders



SPECIAL HAZARDS
SPECIAL SYSTEMS

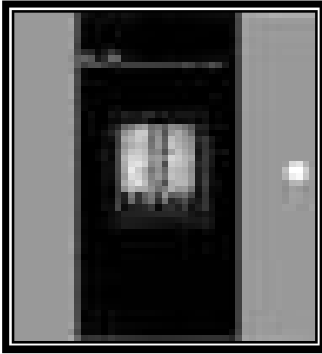
NEW

• **DDX Type F PrePaK**

| Description | Part Number | List Price |
|--|-------------|--------------|
| MODEL DDX TYPE F PREPAK - UNIT ONLY | | |
| 2" DDX Type F PrePaK | 6552002201 | \$ 34,650.00 |
| 2-1/2" DDX Type F PrePaK | 6552002702 | \$ 35,000.00 |
| 3" DDX Type F PrePaK | 6552003201 | \$ 35,250.00 |
| 4" DDX Type F PrePaK | 6552001202 | \$ 35,500.00 |
| 6" DDX Type F PrePaK | 6552001206 | \$ 36,250.00 |
| SOLENOID VALVE RATED PRESSURE (REQUIRED) - OPTIONS (PICK ONE) | | |
| Solenoid Valve, 175 psi | 6871020030 | \$ 400.00 |
| Solenoid Valve, 250 psi | 6871020031 | \$ 1,383.00 |
| PRESSURE SWITCH APPROVALS (REQUIRED) - OPTIONS (PICK ONE) | | |
| DDX PrePaK Pressure Switch UL/FM | 6501200000 | \$ 726.00 |
| DDX PrePaK Pressure Switch ULC | 6501200001 | \$ 774.00 |
| RELEASING/CONTROL PANEL - OPTIONS (PICK ONE) | | |
| Control Panel for 2", 2-1/2" & 3" Type F PrePaK | 6611772000 | \$ 4,026.00 |
| W/O Control Panel for 2", 2-1/2" & 3" Type F PrePaK | 6611772001 | \$ 446.00 |
| Control Panel for 4" & 6" Type F PrePaK | 6611772002 | \$ 4,026.00 |
| W/O Control Panel for 4" & 6" Type F PrePaK | 6611772003 | \$ 446.00 |
| AIR COMPRESSOR KIT FOR 2", 2-1/2" & 3" - OPTIONAL | | |
| Kit, Compressor, 1/6 HP, 110 V | 6702001001 | \$ 3,524.00 |
| Kit, Compressor, 1/6 HP, 220 V | 6702001002 | \$ 3,530.00 |
| Kit, Compressor, 1/3 HP, 110 V | 6702001003 | \$ 4,233.00 |
| Kit, Compressor, 1/3 HP, 220 V | 6702001004 | \$ 4,509.00 |
| AIR COMPRESSOR KIT FOR 4" & 6" - OPTIONAL | | |
| Kit, Compressor, 3/4 HP 110 V | 6702001005 | \$ 5,575.00 |
| Kit, Compressor, 3/4 HP, 220 V | 6702001006 | \$ 7,189.00 |
| Kit, Compressor, 1-1/2 HP, 110 V | 6702001007 | \$ 9,391.00 |
| Kit, Compressor, 1-1/2 HP, 220 V | 6702001008 | \$ 9,391.00 |
| ACCELERATOR KIT - OPTIONAL | | |
| Kit, Accelerator, Type F PrePaK | 6516000006 | \$ 1,020.00 |
| NITROGEN KIT - OPTIONAL | | |
| Nitro Regulator Device, UL/FM for 2", 2-1/2" & 3" Type F PrePaK | 6304030200 | \$ 1,251.00 |
| Nitro Regulator Device, ULC for 2", 2-1/2" & 3" Type F PrePaK | 6304030201 | \$ 1,275.00 |
| Nitro Regulator Device, UL/FM, 4" & 6" Type F PrePaK | 6304030202 | \$ 1,346.00 |
| EXTERNAL NITROGEN TANK BRACKET - OPTIONAL | | |
| Bracket, Kit, Tank, Type F PrePaK | 6899190002 | \$ 420.00 |

DDX Type F PrePaK

- Utilizes the lightweight DDX deluge valve with Type F (Electric/Pneumatic Galvanized Trim)
- Available with optional nitrogen installation kit, air compressor & tank releasing / control panel for 120 VAC / 60Hz or a 220 VAC / 50Hz power supply
- Available sizes: 2" (50mm), 2-1/2" (65mm), 3" (80mm) , 4" (100mm) & 6" (150mm)
- 10 psi - 26 psi (0,7 bar - 1,8 bar)
- Two Cabinet sizes (based upon unit size):
 - (1) 24" (0.61m) W x 27" (0.69m) D x 68" (1.73m) H 12-gauge steel enclosure
 - (2) 25.7" (0.65m) W x 28.9" (0.73m) D x 68" (1.73m) H 12-gauge steel enclosure
- Refer to Bulletin 747



SPECIAL HAZARDS

SPECIAL SYSTEMS

- See Bulletins 707, 708

| Description | Part Number | List Price |
|---|-------------|-------------|
| ACCELERATOR | | |
| B1 Accelerator | AE | \$ 1,514.00 |
| B2 Accelerator Trim | ACT | \$ 622.00 |
| B - Replacement Parts Kits | BRPK | \$ 514.00 |
| B1 - Replacement Parts Kits | B1RPK | \$ 514.00 |
| SOLENOID VALVE & PULL BOX/STATIONS | | |
| Solenoid Valve - LV2LBX25 - 24 V DC | SOL2 | \$ 694.00 |
| Solenoid Valve - LV2LBX15 - 115V AC | SOL2A | \$ 1,064.00 |
| Model A - Hydraulic Manual Pull Box | HMBOX | \$ 486.70 |
| Elect. Man. Emergency Station (Single) | BNG1 | \$ 273.10 |
| Elect. Man. Emergency Station (Dbl) | BNG1F | \$ 383.20 |
| RPC4410 PANEL - TYPE D SYSTEMS | | |
| RPC 4410RC Panel | PFCPANEL | \$ 3,283.30 |
| BATTERIES (2 REQUIRED) | | |
| PS 1270 12 Volt, 7 AMP (UL Systems) | BATUL | \$ 218.00 |
| PS 12120 12 Volt, 12 AMP (FM Systems) | BATFM | \$ 323.70 |
| SYSTEM MODULES | | |
| Transmitter (4XTM) | 4XTM | \$ 555.00 |
| Annunciator Drive (4XLM) | 4XLM | \$ 555.00 |
| Remote Annunciator (RZX 4X) | RZX4X | \$ 555.00 |
| Zone Relay (4XZM) | 4XZM | \$ 555.00 |

| Description | Part Number | List Price |
|--|-------------|-------------|
| DRAIN ASSEMBLIES | | |
| 2 - 1/2" Deluge | 6501180302 | \$ 618.00 |
| 4 & 6" Deluge | 6501180300 | \$ 666.00 |
| 2 - 1/2" Preaction | 6501180102 | \$ 704.00 |
| 4" Preaction | 6501180100 | \$ 761.00 |
| 6" Preaction | 6501180200 | \$ 761.00 |
| DRY PILOT ACTUATOR | | |
| Dry Pilot Actuator | 71030000 | \$ 1,070.00 |
| CHEMETRON 600 SERIES RATE OF RISE DETECTORS | | |
| 601 -- 135°F | 601 | \$ 98.80 |
| 602 -- 200°F | 602 | \$ 98.80 |
| 603 -- 135°F Fixed | 603 | \$ 98.80 |
| 604 -- 200°F Fixed | 604 | \$ 98.80 |
| SMOKE DETECTORS | | |
| Ionization | SMOKEI | \$ 269.00 |
| Photoelectric | SMOKEP | \$ 269.00 |
| Mounting base | MB | \$ 70.00 |
| FLAME DETECTORS (AVAILABLE UPON REQUEST) | | |
| THERMAL DETECTORS | | |
| 135° Interior — Vertical Mounted | 6611442030 | \$ 139.20 |
| 200° Interior — Vertical Mounted | 6611442035 | \$ 139.20 |
| 135° Weatherproof — Vertical Mounted | 6611442010 | \$ 148.10 |
| 200° Weatherproof — Vertical Mounted | 6611442015 | \$ 148.10 |
| 135° Interior — Horizontal Mounted | 6611442020 | \$ 152.60 |
| 200° Interior — Horizontal Mounted | 6611442025 | \$ 152.60 |
| Adaptor Plate | 6611782010 | \$ 27.00 |

SPECIAL HAZARDS
SPECIAL SYSTEMS

• See Bulletin 707

| Description | Part Number | List Price |
|--------------------------------------|-------------|-------------|
| ELECTRIC ALARM BELLS | | |
| 6" — 24 VDC | 6KMS | \$ 72.69 |
| 8" — 24 VDC | 8KMS | \$ 90.86 |
| 10" — 24VDC | 10KMS | \$ 102.62 |
| 6" — 120 VAC | 6KBS | \$ 72.69 |
| 8" — 120 VAC | 8KBS | \$ 90.86 |
| 10" — 120 VAC | 10KBS | \$ 102.62 |
| WBB Weatherproof Back Box | WBB | \$ 44.25 |
| SUPERVISORY AIR SUPPLY | | |
| B Air Compressor Panel (120 V/AC) | BACP | \$ 4,038.00 |
| B Air Compressor Panel (220 V/AC) | BACP2 | \$ 4,728.00 |
| A-2 Air Maint. Dev. (Owner's Air) | AMDAG | \$ 950.00 |
| B-1 Air Maint. Dev. (Ind. Compress) | AMDBG | \$ 1,079.00 |
| C Air Maint. Dev. (Supertrol System) | AMDCG | \$ 1,425.00 |
| VALVE SEAT WRENCHES | | |
| 4" Model B & BX Deluge Valve | W4DV | \$ 210.00 |
| 6" Model B & BX Deluge Valve | W6DV | \$ 225.00 |

LPC SYSTEMS

| Description | Part Number | Price |
|---|-------------|--------------|
| LPC PREACTION SYSTEMS (COMPLETE) | | |
| 100mm | 6503004010 | \$ 26,346.49 |
| 150mm | 6503004015 | \$ 27,787.30 |
| PREACTION SYSTEM COMPONENTS | | |
| CEL Prescient Panel | 6999991602 | \$ 4,260.71 |
| CEL 3.2A Batteries | 6999991603 | \$ 247.02 |
| Battery Cabinet | 6999991604 | \$ 247.02 |
| LPC Single Interlock Trim | 6503001605 | \$ 2,058.32 |
| MISCELLANEOUS ITEMS | | |
| Explosion proof solenoid valve | 6999990322 | \$ 1,080.63 |

SPECIAL HAZARDS
SPECIAL SYSTEMS

**Protectowire Linear
Heat Detector (LHD)**



| Description | Part Number | Short Code | List Price - Per Foot |
|---|-------------|-----------------|-----------------------|
| TYPE EPC CONSTRUCTION (VINYL JACKET) | | | |
| Protectowire (155°F / 68°C) on Msg Wire | 6999995589 | PHSC-155-EPC-M | \$ 3.50 |
| Protectowire (190°F / 88°C) | 6999995590 | PHSC-190-EPC | \$ 3.03 |
| Protectowire (190°F / 88°C) on Msg Wire | 6999995591 | PHSC-190-EPC-M | \$ 3.50 |
| Protectowire (220°F / 105°C) | 6999995592 | PHSC-220-EPC | \$ 2.92 |
| Protectowire (220°F / 105°C) on Msg Wire | 6999995593 | PHSC-220-EPC-M | \$ 3.38 |
| Protectowire (280°F / 138°C) | 6999995594 | PHSC-280-EPC | \$ 3.03 |
| Protectowire (280°F / 138°C) on Msg Wire | 6999995595 | PHSC-280-EPC-M | \$ 3.50 |
| Protectowire (356°F / 180°C) on Msg Wire | 6999995596 | PHSC-356-EPC-M | \$ 3.62 |
| TYPE EPN CONSTRUCTION (NYLON OVER VINYL JACKET) | | | |
| Protectowire (190°F / 88°C) | 6999995597 | PHSC-190-EPN | \$ 3.38 |
| Protectowire (190°F / 88°C) on Msg Wire | 6999995598 | PHSC-190-EPN-M | \$ 3.85 |
| TYPE EPR CONSTRUCTION (POLYPROPYLENE ELASTOMER JACKET) | | | |
| Protectowire (155°F / 68°C) | 6999995599 | PHSC-155-EPR | \$ 3.27 |
| Protectowire (155°F / 68°C) on Msg Wire | 6999995600 | PHSC-155-EPR-M | \$ 3.73 |
| Protectowire (190°F / 88°C) | 6999995601 | PHSC-190-EPR | \$ 3.27 |
| Protectowire (190°F / 88°C) on Msg Wire | 6999995602 | PHSC-190-EPR-M | \$ 3.73 |
| Protectowire (280°F / 138°C) | 6999995603 | PHSC-280-EPR | \$ 3.27 |
| Protectowire (280°F / 138°C) on Msg Wire | 6999995604 | PHSC-280-EPR-M | \$ 3.73 |
| Protectowire (356°F / 180°C) | 6999995605 | PHSC-356-EPR | \$ 3.38 |
| Protectowire (356°F / 180°C) on Msg Wire | 6999995606 | PHSC-356-EPR-M | \$ 3.85 |
| TYPE TRI CONSTRUCTION DUAL TEMPERATURE TRI-WIRE (VINYL JACKET) | | | |
| Protectowire Dual Temp (155/200°F - 68/93°C) | 6999995607 | PHSC-6893-TRI | \$ 3.38 |
| Protectowire Dual Temp (155/200°F - 68/93°C) on Msg Wire | 6999995608 | PHSC-6893-TRI-M | \$ 3.85 |
| TYPE XLT CONSTRUCTION (VINYL POLYMER JACKET) | | | |
| Protectowire Type XLT (135°F / 57 °C) | 6999995582 | PHSC-135-XLT | \$ 3.03 |
| Protectowire Type XLT (135°F / 57 °C) on MSG Wire | 6999995609 | PHSC-135-XLT-M | \$ 3.50 |

Notes:

- **Standard Packaging** - Standard packaging consists of 500 ft. (152m) coils and spools ranging in length from 2300 ft. (710m) to 3280 ft. (1000m) depending upon model ordered. In general, smaller lengths of 500 ft. or less will be on coils, and longer lengths on spools. The exact length of wire per spool used to complete each order is at the sole discretion of the factory. The policy is to send as few spools / coils as possible based upon stock availability.
- **Custom Lengths** - Custom cut single piece coils in lengths up to 1000 ft. (305m) or spools up to 3280 ft. (1000m) can be provided. Limitations may apply depending upon specific model ordered.
- **Messenger Wire Models** - Messenger wire reduces the maximum length of Protectowire that can be accommodated on a standard spool. Types EPC-M, EPR-M and XLT-M are limited to 2500 ft (762m) per spool. Types EPN-M and TRI-M are limited to 2300 ft. (701m) per spool.

SPECIAL HAZARDS
SPECIAL SYSTEMS

**Protectowire Linear
Heat Detector (LHD)
Installation Accessories**



| Description | Part Number | Short Code | List Price |
|---|-------------|------------------|--------------|
| COMMERCIAL TYPE ZONE/END-OF-LINE JUNCTION BOXES | | | |
| Non-metallic Moisture Proof box w/compression terminals | 6999995610 | ZB-4-QC-MP | \$ 43.15 |
| Strain Relief Connector (One each req'd per penetration) | 6999995585 | SR-502 | \$ 10.50 |
| HEAVY DUTY TYPE ZONE/END-OF-LINE JUNCTION BOXES | | | |
| Fiberglass NEMA-4X Type JIC Enclosure w/compression terminals | 6999995584 | ZB-HD-4-QC (N4X) | \$ 174.95 |
| Strain Relief Connector (One each req'd per penetration) | 6999995585 | SR-502 | \$ 10.50 |
| WIRING ACCESSORIES | | | |
| Splicing Connectors (10/pk, SFTS Sealant Recommended) | 6999995586 | PWSC | \$ 14.00 |
| 3 Pole Splicing Connectors for TRI-Wire (10/pk, SFTS Sealant Recommended) | 6999995611 | PWSC - 3 | \$ 14.00 |
| Splicing Sleeves (10/pk) | 6999995612 | PWS | \$ 14.00 |
| Tape Sealant for PWSC Splice Connectors (20-30 splices) | 6999995613 | SFTS-1-8F | \$ 20.99 |
| Flexible Leads | 6999995614 | PFL | \$ 20.99 |
| Splicing Tape - White | 6999995615 | #35 White | \$ 11.66 |
| Splicing Tape - Red | 6999995616 | #35 Red | \$ 11.66 |
| Splicing Tape - Blue | 6999995617 | #35 Blue | \$ 11.66 |
| Splicing Tape - Black (Low Temp Tape for freezer applications) | 6999995618 | 33+ | \$ 10.50 |
| Wire Dispensing Reel for Coils | 6999995619 | SU-15 | \$ 233.26 |
| FASTENERS - GENERAL PURPOSE APPLICATIONS | | | |
| Clips, Corner, Nylon - White | 6999995583 | WAW-N | \$ 0.47 |
| Clips, Corner, Polypropylene - Clear | 6999995620 | WAW-P | \$ 0.47 |
| Clips, Line (Use with Type EPR, EPC, EPN & TRI Protectowire) | 6999995621 | OHS-1 | \$ 0.59 |
| 304 Stainless Steel Line Clip w/ 1/4" hole (Use w/ all LHD types) | 6999995622 | OHS-SS | \$ 2.33 |
| Beam Clamp Assembly (Steel) | 6999995623 | BC-2 | \$ 2.92 |
| Iron Zinc Plated Beam Clamp Assembly (w/ Polypropylene clip) | 6999995624 | BC-3P | \$ 3.50 |
| Iron Zinc Plated Beam Clamp Assembly (w/ Nylon clip) | 6999995625 | BC-3N | \$ 3.50 |
| Drive Rings | 6999995626 | PDR | \$ 0.35 |
| L-Bracket (Rim Seal Type) | 6999995627 | RMC-2 | \$ 3.50 |
| Stainless Steel L-Bracket (Rim Seal Type) | 6999995628 | RMC-3 | \$ 11.66 |
| Insulated Standoff | 6999995629 | TR-5G | \$ 5.83 |
| Cable Mount (Requires Sikaflex adhesive) | 6999995630 | EMS-A-CO | \$ 1.75 |
| Cable Tie (for EMS-A-CO) | 6999995631 | PLTIS-CO | \$ 0.94 |
| FASTENERS - CABLE TRAY APPLICATIONS | | | |
| Mounting Clip (single piece) | 6999995633 | HPC-2 | \$ 2.33 |
| Mounting Clip Assembly | 6999995634 | CC-2N | \$ 2.33 |
| Mounting Clip Assembly | 6999995635 | CC-2W | \$ 2.33 |
| Mounting Clip Assembly | 6999995636 | CC-10N | \$ 2.92 |
| Mounting Clip Assembly | 6999995637 | CC-10W | \$ 2.92 |
| Mounting Clip Assembly w/ screw & lock nut | 6999995638 | CC-10N-S | \$ 3.50 |
| Mounting Clip Assembly w/ screw & lock nut | 6999995639 | CC-10W-S | \$ 3.50 |
| FASTENERS - SPRINKLER PIPE MOUNTING | | | |
| Pipe Mounting Strap - Nylon (3/4" to 2" pipe) | 6999995640 | PM-3A | \$ 1.05 |
| Pipe Mounting Strap - Nylon (2-1/2" to 3-1/2" pipe) | 6999995641 | PM-3B | \$ 1.40 |
| Pipe Mounting Strap - Nylon (4" to 6" pipe) | 6999995642 | PM-3C | \$ 7.00 |
| MESSENGER WIRE APPLICATIONS | | | |
| Eyebolt | 6999995643 | TR-4A | \$ 2.33 |
| Turnbuckle | 6999995644 | TR-24 | \$ 6.42 |
| 304 Stainless Steel Eyebolt | 6999995645 | TR-4A-S | \$ 5.83 |
| 304 Stainless Steel Turnbuckle | 6999995646 | TR-24-S | \$ 14.00 |
| TEST EQUIPMENT | | | |
| Fault Locator System | 6999995647 | MFL-92 | \$ 10,869.92 |
| Protectowire Alarm Point Locator Meter Adapter | 6999995648 | APL-90 | \$ 921.38 |