

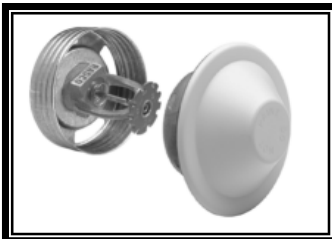


F1RES 30 Pendant & Recessed Pendant

- **SIN R3511**
- See Bulletin 135

MTO	Part Number		Temperature	Finish	List Price
F1 RES 30 - 1/2" NPT THREADS (15MM)					
	30B	K Factor = 3.0	155°F 68°C	Bronze	\$ 35.99
	30C	K Factor = 3.0	155°F 68°C	Chrome	\$ 36.25
	30W	K Factor = 3.0	155°F 68°C	White	\$ 36.25
	30B5	K Factor = 3.0	175°F 79°C	Bronze	\$ 35.99
	30C5	K Factor = 3.0	175°F 79°C	Chrome	\$ 36.25
	30W5	K Factor = 3.0	175°F 79°C	White	\$ 36.25
RECESSING ESCUTCHEONS					
	GF1B	1/2" (15mm)		Brass	\$ 13.06
	GF1C	1/2" (15mm)		Chrome	\$ 6.47
	GF1W	1/2" (15mm)		White	\$ 6.47
	GF2B	1/2" (15mm)		Brass	\$ 11.87
	GF2C	1/2" (15mm)		Chrome	\$ 6.47
	GF2W	1/2" (15mm)		White	\$ 6.47
	FPC	Push-On Thread Off		Chrome	\$ 12.47
	FPW	Push-On Thread Off		White	\$ 12.47

WD	Requires Model D Sprinkler Wrench	\$ 50.00
WGFR	For Recessed Use Model GFR1 Wrench	\$ 190.00



F1RES 30 CCP

- **SIN R3511**
- Conical Concealed Sprinkler
- See Bulletin 135

MTO	Part Number		Temperature	Finish	List Price
F1RES 30 CCP - 21/64" ORIFICE, 1/2" NPT THREADS — SPRINKLER ONLY					
	30CCP1		155°F 68°C	Bronze	\$ 32.60
REQUIRED COVERPLATES					
	CCP0C76	1/2" (15mm)		Chrome	\$ 21.12
	CCP0W76	1/2" (15mm)		White	\$ 21.12
X	CCP0SP76	1/2" (15mm)		Specialty	\$ 35.48
	CCP05C76	5/16"		Chrome	\$ 21.12
	CCP05W76	5/16"		White	\$ 21.12
X	CCP05SP76	5/16"		Specialty	\$ 35.48

WGFR	For Recessed Use Model GFR1 Wrench	\$ 190.00
------	------------------------------------	-----------

***135°F for Sloped Ceiling Only**

Please refer to the latest sales bulletin for specific approval listings and available finishes.
See our "Specialties Page" for special finish charges — including Teflon Tape.
Items that are MTO (indicated by "x") allow 7-10 work days.

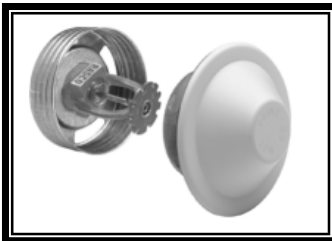


F1RES 49 Pendant & Recessed Pendant

- **SIN R3516**
- See Bulletins 135 & 176

MTO	Part Number		Temperature	Finish	List Price
F1 RES 49 - 1/2" NPT THREADS (15MM)					
	49B	K Factor = 4.9	155°F 68°C	Bronze	\$ 35.99
	49C	K Factor = 4.9	155°F 68°C	Chrome	\$ 36.25
	49W	K Factor = 4.9	155°F 68°C	White	\$ 36.25
	49B5	K Factor = 4.9	175°F 79°C	Bronze	\$ 35.99
	49C5	K Factor = 4.9	175°F 79°C	Chrome	\$ 36.25
	49W5	K Factor = 4.9	175°F 79°C	White	\$ 36.25
RECESSING ESCUTCHEONS					
	GF1B	1/2" (15mm)		Brass	\$ 13.06
	GF1C	1/2" (15mm)		Chrome	\$ 6.47
	GF1W	1/2" (15mm)		White	\$ 6.47
	GF2B	1/2" (15mm)		Brass	\$ 11.87
	GF2C	1/2" (15mm)		Chrome	\$ 6.47
	GF2W	1/2" (15mm)		White	\$ 6.47
	FPC	Push-On Thread Off		Chrome	\$ 12.47
	FPW	Push-On Thread Off		White	\$ 12.47

WD	Requires Model D Sprinkler Wrench	\$ 50.00
WGFR	For Recessed Use Model GFR1 Wrench	\$ 190.00



F1RES 49 CCP

- **SIN R3516**
- Conical Concealed Sprinkler
- See Bulletins 135 & 176

MTO	Part Number		Temperature	Finish	List Price
F1RES 49 CCP - 7/16" ORIFICE, 1/2" NPT THREADS — SPRINKLER ONLY					
	49CCP1		155°F 68°C	Bronze	\$ 32.60
REQUIRED COVERPLATES					
	CCP0C76	1/2" (15mm)		Chrome	\$ 21.12
	CCP0W76	1/2" (15mm)		White	\$ 21.12
X	CCP0SP76	1/2" (15mm)		Specialty	\$ 35.48
	CCP05C76	5/16"		Chrome	\$ 21.12
	CCP05W76	5/16"		White	\$ 21.12
X	CCP05SP76	5/16"		Specialty	\$ 35.48

WGFR	For Recessed Use Model GFR1 Wrench	\$ 190.00
------	------------------------------------	-----------

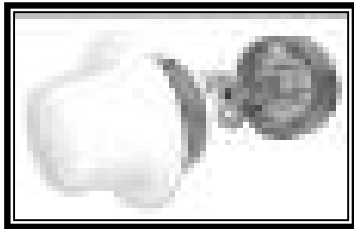
***135°F for Sloped Ceiling Only**

Please refer to the latest sales bulletin for specific approval listings and available finishes.
See our "Specialties Page" for special finish charges — including Teflon Tape.
Items that are MTO (indicated by "x") allow 7-10 work days.



F1RES 44 HSW & REC HSW

- **SIN R3531**
- Horizontal Sidewall
- Recessed HSW
- See Bulletins 135 & 176



F1RES 44 SWC

- **SIN R3531**
- Sidewall, Concealed
- See Bulletin 135



RFC43 Flat Concealed

- **SIN RA0612**
- K Factor = 4.3
- See Bulletin 006

RFC49 Flat Concealed

- **SIN RA0616**
- K Factor = 4.9
- See Bulletin 006

M T O	Part Number	Temperature	Finish	List Price
F1RES 44 HSW - 1/2" NPT THREADS (15MM)				
	44B	K Factor 4.4 155°F 68°C	Bronze	\$ 37.12
	44C	K Factor 4.4 155°F 68°C	Chrome	\$ 37.15
	44W	K Factor 4.4 155°F 68°C	White	\$ 37.15
	44B5	K Factor 4.4 175°F 79°C	Bronze	\$ 37.12
	44C5	K Factor 4.4 175°F 79°C	Chrome	\$ 37.15
	44W5	K Factor 4.4 175°F 79°C	White	\$ 37.15
G/F2 ESCUTCHEONS				
	GF2B	1/2" (15mm)	Brass	\$ 11.87
	GF2C	1/2" (15mm)	Chrome	\$ 6.47
	GF2W	1/2" (15mm)	White	\$ 6.47
	FPC	Push-On Thread Off	Chrome	\$ 12.47
	FPW	Push-On Thread Off	White	\$ 12.47

M T O	Part Number	Temperature	Finish	List Price
F1RES 44 SWC 1/2" NPT THREADS (15MM)				
	SWC44	K Factor 4.4 155°F 68°C	Bronze	\$ 36.40
REQUIRED COVERPLATES (1/2" ADJUSTMENT) FOR SWC				
	CHWNS	135°F 57°C	White	\$ 21.84
X	CHSPNS	135°F 57°C	Specialty	\$ 32.76

WD	Requires Model D Sprinkler Wrench	\$ 50.00
WGFR	For Recessed & Concealed Use Model GFR2 Wrench	\$ 190.00

M T O	Part Number	Temperature	Finish	List Price
RFC43 - 1/2" NPT THREADS — SPRINKLER ONLY				
X	RFC43	K Factor = 4.3 165°F 74°F	Bronze	\$ 46.50
RFC49 - 1/2" NPT THREADS — SPRINKLER ONLY				
X	RFC49	K Factor = 4.9 165°F 74°F	Bronze	\$ 46.50
REQUIRED COVERPLATES				
	CRFCW	135°F 57°C	White	\$ 22.88

WFC	RFC43 requires Model FC Sprinkler Wrench	\$ 190.00
-----	--	-----------

Notes:

Other Coverplate Finishes are on Page S-98
(Plated Finishes are not available)

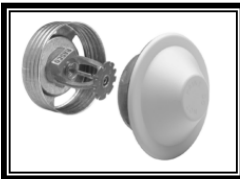


F1RES 58 Pendant & Recessed Pendant

- **SIN R3513**
- See Bulletins 135 & 176

MTO	Part Number	Temperature	Finish	List Price
F1 RES 58 -- 1/2" NPT THREADS (15MM)				
	58P1B	K Factor = 5.8 155°F 68°C	Bronze	\$ 35.99
	58P1C	K Factor = 5.8 155°F 68°C	Chrome	\$ 36.25
	58P1W	K Factor = 5.8 155°F 68°C	White	\$ 36.25
	58P5B	K Factor = 5.8 175°F 79°C	Bronze	\$ 35.99
	58P5C	K Factor = 5.8 175°F 79°C	Chrome	\$ 36.25
	58P5W	K Factor = 5.8 175°F 79°C	White	\$ 36.25
RECESSING ESCUTCHEONS				
	GF1B	1/2" (15mm)	Brass	\$ 13.06
	GF1C	1/2" (15mm)	Chrome	\$ 6.47
	GF1W	1/2" (15mm)	White	\$ 6.47
	GF2B	1/2" (15mm)	Brass	\$ 11.87
	GF2C	1/2" (15mm)	Chrome	\$ 6.47
	GF2W	1/2" (15mm)	White	\$ 6.47
	FPC	Push-On Thread Off	Chrome	\$ 12.47
	FPW	Push-On Thread Off	White	\$ 12.47

WD Requires Model D Sprinkler Wrench \$ 50.00
WGFR For Recessed Use Model GFR2 Wrench \$ 190.00

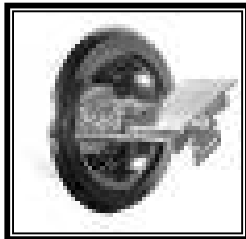


F1RES 58 CCP

- **SIN R3513**
- Residential Concealed
- See Bulletins 135 & 176

MTO	Part Number	Temperature	Finish	List Price
F1RES 58 CCP - 3/8" ORIFICE, 1/2" NPT THREADS — SPRINKLER ONLY				
	58CCP1	K Factor = 5.8 155°F 68°C	Bronze	\$ 32.60
REQUIRED COVERPLATES				
	CCP0C76	1/2" (15mm)	Chrome	\$ 21.12
	CCP0W76	1/2" (15mm)	White	\$ 21.12
X	CCP0SP76	1/2" (15mm)	Specialty	\$ 35.48
	CCP05C76	5/16"	Chrome	\$ 21.12
	CCP05W76	5/16"	White	\$ 21.12
X	CCP05SP76	5/16"	Specialty	\$ 35.48

WGFR Requires GFR2 Wrench \$ 190.00



F1RES 58 HSW & REC HSW

- **SIN R3513**
- Horizontal Sidewall
- Recessed HSW
- See Bulletins 135 & 176

MTO	Part Number	Temperature	Finish	List Price
F1RES 58 - 1/2" NPT THREADS (15MM)				
	58H1B	K Factor = 5.8 155°F 68°C	Bronze	\$ 37.12
	58H1C	K Factor = 5.8 155°F 68°C	Chrome	\$ 37.15
	58H1W	K Factor = 5.8 155°F 68°C	White	\$ 37.15
	58H5B	K Factor = 5.8 175°F 79°C	Bronze	\$ 37.12
	58H5C	K Factor = 5.8 175°F 79°C	Chrome	\$ 37.15
	58H5W	K Factor = 5.8 175°F 79°C	White	\$ 37.15
G/F2 ESCUTCHEONS				
	GF2B	1/2" (15mm)	Brass	\$ 11.87
	GF2C	1/2" (15mm)	Chrome	\$ 6.47
	GF2W	1/2" (15mm)	White	\$ 6.47
	FPC	Push-On Thread Off	Chrome	\$ 12.47
	FPW	Push-On Thread Off	White	\$ 12.47

WD Requires Model D Sprinkler Wrench \$ 50.00
WGFR For Recessed & Concealed Use Model GFR2 Wrench \$ 190.00

Please refer to the latest sales bulletin for specific approval listings and available finishes.
See our "Specialties Page" for special finish charges — including Teflon Tape.
Items that are MTO (indicated by "X") allow 7-10 work days.



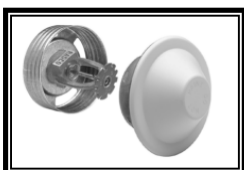
NEW

F1RES 76 Pendant & Recessed Pendant

- **SIN R7618**
- K Factor = 7.6
- See Bulletins 135 (.05 Density) and 176 (.10 Density)

M T O	Part Number	Temperature	Finish	List Price
F1RES 76 -- 3/4" NPT THREADS (20MM)				
	76P1B	K Factor = 7.6 155°F 68°C	Bronze	\$ 36.62
	76P1C	K Factor = 7.6 155°F 68°C	Chrome	\$ 38.91
	76P1W	K Factor = 7.6 155°F 68°C	White	\$ 38.91
	76P5B	K Factor = 7.6 175°F 79°C	Bronze	\$ 36.62
	76P5C	K Factor = 7.6 175°F 79°C	Chrome	\$ 38.91
	76P5W	K Factor = 7.6 175°F 79°C	White	\$ 38.91
RECESSING ESCUTCHEONS				
	GF1LB	3/4"Adjustment	Brass	\$ 13.06
	GF1LC	3/4"Adjustment	Chrome	\$ 6.47
	GF1LW	3/4"Adjustment	White	\$ 6.47
	GF2LB	1/2"Adjustment	Brass	\$ 11.87
	GF2LC	1/2"Adjustment	Chrome	\$ 6.47
	GF2LW	1/2"Adjustment	White	\$ 6.47
	FPLC	Push-On Thread Off	Chrome	\$ 12.47
	FPLW	Push-On Thread Off	White	\$ 12.47

WD Requires Model D Sprinkler Wrench \$ 50.00
WGFR For Recessed Use Model GFR2 Wrench \$ 190.00



F1RES 76 CCP

- **SIN R7618**
- K Factor = 7.6
- See Bulletins 135 (.05 Density) and 176 (.10 Density)

M T O	Part Number	Temperature	Finish	List Price
F1RES 76 CCP - 3/4" NPT THREADS — SPRINKLER ONLY				
	76CCP1	K Factor = 7.6 155°F 68°C	Bronze	\$ 45.78
	76CCP5	K Factor = 7.6 175°F 79°C	Bronze	\$ 45.78
REQUIRED COVERPLATES = CCP (76) 135 DEGREE				
	CCP05C76	5/16"Adjustment	Chrome	\$ 21.12
	CCP05W76	5/16"Adjustment	White	\$ 21.12
X	CCP05SP76	5/16"Adjustment	Specialty	\$ 35.48
	CCP0C76	1/2"Adjustment	Chrome	\$ 21.12
	CCP0W76	1/2"Adjustment	White	\$ 21.12
X	CCP0SP76	1/2"Adjustment	Specialty	\$ 35.48

WGFR Requires GFR2 Wrench \$ 190.00



RFC56 Concealer

- **SIN RA0914**
- Residential Concealed
- 165°F Only
- See Bulletin 009

F1RES 76, K=7.6

- Engineered for Design Densities of .05 and .10 gpm/ft²
- Available as Pendant, Recessed Pendant & Conical Concealed
- Largest K Factor on the market today for NFPA 13 Residential Applications
- cULus Listed

M T O	Part Number	Temperature	Finish	List Price
RFC56 - 1/2" ORIFICE, 1/2" NPT THREADS — SPRINKLER ONLY				
X	RFC56	K Factor = 5.6 165°F 74°F	Bronze	\$ 56.25
REQUIRED COVERPLATES				
	CG40W	135°F 57°C	White	\$ 22.88

WG4 RFC56 requires Model G4 Sprinkler Wrench \$ 189.00

Please refer to the latest sales bulletin for specific approval listings and available finishes. See our "Specialties Page" for special finish charges — including Teflon Tape. Items that are MTO (indicated by "X") allow 7-10 work days.