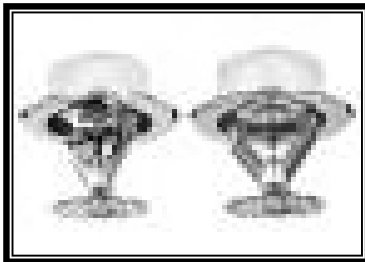


JL112 & J112 UPRIGHT

- ECLH & ECOH
- JL112 (**Link**) = SIN R7326
- J112 (**Bulb**) = SIN RA7326
- K Factor = 11.2
- See Bulletin 173



JL112 & J112 PENDENT & RECESSED PENDENT

- ECLH & ECOH
- JL112 (**Link**) = SIN R7216
- J112 (**Bulb**) = SIN RA7216
- K Factor = 11.2
- See Bulletin 172

- Extended Coverage for both Light & Ordinary Hazard
- Quick Response for Light Hazard (16'x16' to 20'x20' sprinkler spacing)
- Quick Response for Ordinary Hazard (12'x12' & 14'x14' sprinkler spacing)
- Standard Response for Ordinary Hazard (16'x16' to 20'x20' sprinkler spacing)

M T O	Part Number	Temperature	Finish	List Price
UPRIGHT - 3/4" NPT THREADS				
	JL112U1B	165°F 74°C	Bronze	\$ 47.92
	JL112U1C	165°F 74°C	Chrome	\$ 49.74
	JL112U1W	165°F 74°C	White Poly Coated	\$ 49.74
	JL112U2B	212°F 100°C	Bronze	\$ 47.92
	JL112U2C	212°F 100°C	Chrome	\$ 49.74
	JL112U2W	212°F 100°C	White Poly Coated	\$ 49.74
	J112U1B	155°F 68°C	Bronze	\$ 48.53
	J112U1C	155°F 68°C	Chrome	\$ 50.35
	J112U1W	155°F 68°C	White Poly Coated	\$ 50.35
	J112U2B	200°F 93°C	Bronze	\$ 48.53
	J112U2C	200°F 93°C	Chrome	\$ 50.35
	J112U2W	200°F 93°C	White Poly Coated	\$ 50.35

M T O	Part Number	Temperature	Finish	List Price
PENDENT - 3/4" NPT THREADS				
	JL112P1B	165°F 74°C	Bronze	\$ 47.92
	JL112P1C	165°F 74°C	Chrome	\$ 49.74
	JL112P1W	165°F 74°C	White Poly Coated	\$ 49.74
	JL112P2B	212°F 100°C	Bronze	\$ 47.92
	JL112P2C	212°F 100°C	Chrome	\$ 49.74
	JL112P2W	212°F 100°C	White Poly Coated	\$ 49.74
	J112P1B	155°F 68°C	Bronze	\$ 48.53
	J112P1C	155°F 68°C	Chrome	\$ 50.35
	J112P1W	155°F 68°C	White Poly Coated	\$ 50.35
	J112P2B	200°F 93°C	Bronze	\$ 48.53
	J112P2C	200°F 93°C	Chrome	\$ 50.35
	J112P2W	200°F 93°C	White Poly Coated	\$ 50.35

M T O	Part Number	Thread	Finish	List Price
F1 ESCUTCHEON				
	GF1LB	3/4" (20mm)	Brass	\$ 13.06
	GF1LC	3/4" (20mm)	Chrome	\$ 6.47
	GF1LW	3/4" (20mm)	White	\$ 6.47
F2 ESCUTCHEON				
	GF2LB	3/4" (20mm)	Brass	\$ 11.87
	GF2LC	3/4" (20mm)	Chrome	\$ 6.47
	GF2LW	3/4" (20mm)	White	\$ 6.47
FP PUSH-ON/THREAD-OFF ESCUTCHEON				
	FPLC	3/4" (20mm)	Chrome	\$ 12.47
	FPLW	3/4" (20mm)	White	\$ 12.47

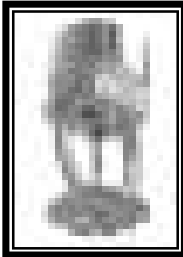
WJ1	Upright & Pendent Requires Model J1 Sprinkler Wrench	\$ 76.00
WRJ	Rec Pendent Requires Model J112 Sprinkler Wrench	\$ 189.00



F1FR56 QREC

- K-Factor = 5.6 (80)
- 3mm Glass Bulb
- Thread Size = 1/2"
- See Bulletin 028

NEW



F1FR EC PENDENT

- Quick Response
- Extended Coverage
- Glass Bulb
- See Bulletin 148

Please refer to the latest sales bulletin for specific approval listings and available finishes.
See our "Specialties Page" for special finish charges — including Teflon Tape.
Items that are MTO (indicated by "x") allow 7-10 work days.

M T O	Part Number	Temperature	Finish	List Price
1/2" ORIFICE, 1/2" NPT THREADS (15MM)				
X	F1FR56EC0B	135°F 57°C	Bronze	\$ 37.12
X	F1FR56EC0C	135°F 57°C	Chrome	\$ 40.69
X	F1FR56EC0W	135°F 57°C	White	\$ 42.56
X	F1FR56EC1B	155°F 68°C	Bronze	\$ 37.12
	F1FR56EC1C	155°F 68°C	Chrome	\$ 40.69
	F1FR56EC1W	155°F 68°C	White	\$ 42.56
1/32" ORIFICE, 3/4" NPT THREADS (20MM)				
X	F1FRECOLB	135°F 57°C	Bronze	\$ 39.38
	F1FRECOLC	135°F 57°C	Chrome	\$ 42.90
	F1FRECOLW	135°F 57°C	White	\$ 46.32
	F1FREC1LB	155°F 68°C	Bronze	\$ 39.38
	F1FREC1LC	155°F 68°C	Chrome	\$ 42.90
	F1FREC1LW	155°F 68°C	White	\$ 46.32
G/F2 ESCUTCHEONS				
	GF2B	1/2" (15mm)	Bronze	\$ 11.87
	GF2C	1/2" (15mm)	Chrome	\$ 6.47
	GF2W	1/2" (15mm)	White	\$ 6.47
X	GF2LB	3/4" (20mm)	Bronze	\$ 11.87
	GF2LC	3/4" (20mm)	Chrome	\$ 6.47
	GF2LW	3/4" (20mm)	White	\$ 6.47
X	GF2MB	10mm	Bronze	\$ 11.85
X	GF2MC	10mm	Chrome	\$ 6.86
X	GF2MW	10mm	White	\$ 6.13

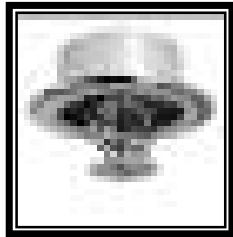
WD	Requires Model D Sprinkler Wrench	\$ 50.00
WGFR	For Recessed, Use Model GFR1	\$ 190.00



F1FR56-300 QREC

- K Factor = 5.6 (80)
- 300 PSI Rated
- 3mm Glass Bulb
- Thread Size = 1/2"
- See Bulletin 030

NEW



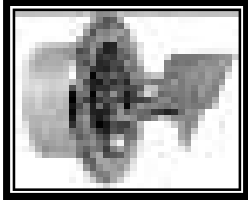
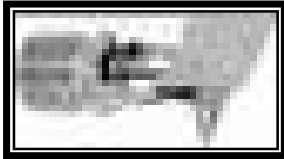
F1FR-300 QREC

- Quick Response
- Extended Coverage
- 300 PSI Rated
- Glass Bulb
- See Bulletin 159

Please refer to the latest sales bulletin for specific approval listings and available finishes.
See our "Specialties Page" for special finish charges — including Teflon Tape.
Items that are MTO (indicated by "x") allow 7-10 work days.

M T O	Part Number	Temperature	Finish	List Price
1/2" ORIFICE, 1/2" NPT THREADS (15MM) — 300 PSI				
	F1FR56EC0B3	135°F 57°C	Bronze	\$ 39.15
	F1FR56EC0C3	135°F 57°C	Chrome	\$ 42.64
	F1FR56EC0W3	135°F 57°C	White	\$ 44.55
	F1FR56EC1B3	155°F 68°C	Bronze	\$ 39.15
	F1FR56EC1C3	155°F 68°C	Chrome	\$ 42.64
	F1FR56EC1W3	155°F 68°C	White	\$ 44.55
17/32" ORIFICE, 3/4" NPT THREADS (20MM) — 300 PSI				
	F1FREC0LB3	135°F 57°C	Bronze	\$ 40.87
	F1FREC0LC3	135°F 57°C	Chrome	\$ 44.55
	F1FREC0LW3	135°F 57°C	White	\$ 48.09
	F1FREC1LB3	155°F 68°C	Bronze	\$ 40.87
	F1FREC1LC3	155°F 68°C	Chrome	\$ 44.55
	F1FREC1LW3	155°F 68°C	White	\$ 48.09
G/F1 ESCUTCHEONS				
	GF1B	1/2" (15mm)	Brass	\$ 13.06
	GF1C	1/2" (15mm)	Chrome	\$ 6.47
	GF1W	1/2" (15mm)	White	\$ 6.47
	GF1LB	3/4" (20mm)	Brass	\$ 13.06
	GF1LC	3/4" (20mm)	Chrome	\$ 6.47
	GF1LW	3/4" (20mm)	White	\$ 6.47

WD	Requires Model D Sprinkler Wrench	\$ 50.00
WGFR	For Recessed, Use Model GFR1	\$ 190.00



*Coverages up
to
16' x 24'
Can Install
4-12"*

M T O	Part Number	Temperature	Finish	List Price
EC9 — 17/32" ORIFICE, 3/4" NPT THREADS (20MM) — 300 PSI				
X	F1FREC90B3	135°F 57°C	Bronze	\$ 37.97
	F1FREC90C3	135°F 57°C	Chrome	\$ 40.30
	F1FREC90W3	135°F 57°C	White	\$ 42.83
	F1FREC91B3	155°F 68°C	Bronze	\$ 37.97
	F1FREC91C3	155°F 68°C	Chrome	\$ 40.30
	F1FREC91W3	155°F 68°C	White	\$ 42.83
X	F1FREC95B3	175°F 79°C	Bronze	\$ 37.97
X	F1FREC95C3	175°F 79°C	Chrome	\$ 40.30
X	F1FREC95W3	175°F 79°C	White	\$ 42.83
G/F2 ESCUTCHEONS				
	GF2B	1/2" (15mm)	Brass	\$ 11.87
	GF2C	1/2" (15mm)	Chrome	\$ 6.47
	GF2W	1/2" (15mm)	White	\$ 6.47
X	GF2LB	3/4" (20mm)	Brass	\$ 11.87
	GF2LC	3/4" (20mm)	Chrome	\$ 6.47
	GF2LW	3/4" (20mm)	White	\$ 6.47

WD	Requires Model D Sprinkler Wrench	\$ 50.00
WGFR	For Recessed Use Model GFR1 Wrench	\$ 190.00

F1FR-300 QREC EC9

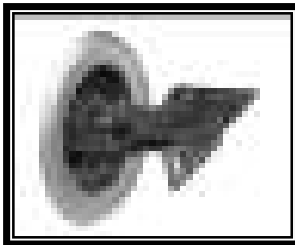
- Quick Response
- Light Hazard
- 300 PSI Rated
- Horizontal Sidewall
- HSW Recessed
- See Bulletin 159



F1FR56 QREC EC8

- K Factor = 5.6 (80)
- Deflector = EC8
- 3mm Glass Bulb
- Thread Size = 1/2"
- See Bulletin 028

NEW



F1FR QREC EC9

- Quick Response
- Light Hazard
- 300 PSI Rated
- See Bulletin 148

Please refer to the latest sales bulletin for specific approval listings and available finishes.
See our "Specialties Page" for special finish charges — including Teflon Tape.
Items that are MTO (indicated by "x") allow 7-10 work days.

M T O	Part Number	Temperature	Finish	List Price
EC8 — 1/2" ORIFICE, 1/2" NPT THREADS (15MM)				
X	F1FR56EC80B	135°F 57°C	Bronze	\$ 33.73
	F1FR56EC80C	135°F 57°C	Chrome	\$ 35.82
X	F1FR56EC80W	135°F 57°C	White	\$ 38.43
X	F1FR56EC81B	155°F 68°C	Bronze	\$ 33.73
	F1FR56EC81C	155°F 68°C	Chrome	\$ 35.82
	F1FR56EC81W	155°F 68°C	White	\$ 38.43
X	F1FR56EC85B	175°F 79°C	Bronze	\$ 33.73
X	F1FR56EC85C	175°F 79°C	Chrome	\$ 35.82
X	F1FR56EC85W	175°F 79°C	White	\$ 38.43
EC9 — 17/32" ORIFICE, 3/4" NPT THREADS (20MM)				
X	F1FREC90B	135°F 57°C	Bronze	\$ 36.19
	F1FREC90C	135°F 57°C	Chrome	\$ 38.43
	F1FREC90W	135°F 57°C	White	\$ 40.86
	F1FREC91B	155°F 68°C	Bronze	\$ 36.19
	F1FREC91C	155°F 68°C	Chrome	\$ 38.43
	F1FREC91W	155°F 68°C	White	\$ 40.86
X	F1FREC95B	175°F 79°C	Bronze	\$ 36.19
X	F1FREC95C	175°F 79°C	Chrome	\$ 38.43
X	F1FREC95W	175°F 79°C	White	\$ 40.86
G/F2 ESCUTCHEONS				
	GF2B	1/2" (15mm)	Brass	\$ 11.87
	GF2C	1/2" (15mm)	Chrome	\$ 6.47
	GF2W	1/2" (15mm)	White	\$ 6.47
X	GF2LB	3/4" (20mm)	Brass	\$ 11.87
	GF2LC	3/4" (20mm)	Chrome	\$ 6.47
	GF2LW	3/4" (20mm)	White	\$ 6.47
X	GF2MB	10mm	Brass	\$ 11.85
X	GF2MC	10mm	Chrome	\$ 6.86
X	GF2MW	10mm	White	\$ 6.13

WD Requires Model D Sprinkler Wrench \$ 50.00
WGFR For Recessed Use Model GFR1 Wrench \$ 190.00



F1FR56-300 QREC

- K Factor = 5.6 (80)
- 3mm Glass Bulb
- Thread Size = 1/2"
- See Bulletin 030

NEW

F1FR-300 QREC CCP

- Concealed
- Push-on/Thread-Off
- 5.6/8.0 K Factor
- See Bulletin 151

F1FR-300 QREC CCP

- Quick Response
- Extended Coverage
- Concealed
- Push-on/Thread-Off
- 5.6/8.0 K Factor
- See Bulletin 167

Please refer to the latest sales bulletin for specific approval listings and available finishes.
See our "Specialties Page" for special finish charges — including Teflon Tape.
Items that are MTO (indicated by "X") allow 7-10 work days.

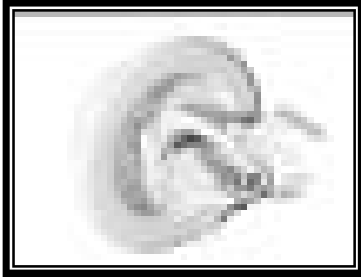
M T O	Part Number	Temperature	Finish	List Price
1/2" ORIFICE , 1/2" NPT (15MM) — SPRINKLER ONLY				
X	F1FR56CE0	135°F 57°C	Bronze	\$ 31.88
X	F1FR56CE1	155°F 68°C	Bronze	\$ 31.88
17/32" ORIFICE 3/4" NPT THREADS (20MM) — SPRINKLER ONLY				
X	F1FRCELO	135°F 57°C	Bronze	\$ 31.31
X	F1FRCEL1	155°F 68°C	Bronze	\$ 31.31
1/2" ORIFICE , 1/2" NPT (15MM) — SPRINKLER ONLY — 300 PSI				
X	F1FR56CE03	135°F 57°C	Bronze	\$ 33.10
X	F1FR56CE13	155°F 68°C	Bronze	\$ 33.10
17/32" ORIFICE , 3/4" NPT (20MM) — SPRINKLER ONLY — 300 PSI				
X	F1FRCE0L3	135°F 57°C	Bronze	\$ 33.10
X	F1FRCE1L3	155°F 68°C	Bronze	\$ 33.10
REQUIRED COVERPLATES (1/2" ADJUSTMENT)				
	CCP0C76	135°F 57°C	Chrome	\$ 21.12
	CCP0W76	135°F 57°C	White	\$ 21.12
X	CCP0SP76	135°F 57°C	Specialty	\$ 35.48
REQUIRED COVERPLATES (5/16" ADJUSTMENT)				
	CCP05C76	135°F 57°C	Chrome	\$ 21.12
	CCP05W76	135°F 57°C	White	\$ 21.12
X	CCP05SP76	135°F 57°C	Specialty	\$ 35.48

WRC Requires Model RC1 Sprinkler Wrench \$ 190.00

Notes:

Sprinkler and cup are factory assembled and a plastic protective cap is included.
Cover plates are shipped in a separate carton 20' x 20' requires 135°F sprinkler.

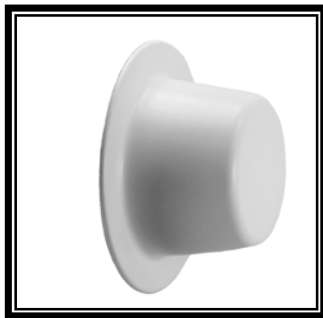
For custom finishes, customer should provide paint sample.
Allow at least 2-3 weeks. A set-up charge is required for all orders under 500 pieces. Consult factory for details.



DH56

- K-5.6 EC HSW
- SIN RA1564
- Extended Coverage
- Light Hazard Applications
- Recessed & Concealed
- See Bulletin 015

M T O	Part Number	Temperature	Finish	List Price
DH56				
	DH561B	155°F 68°C	Bronze	\$ 39.11
	DH561C	155°F 68°C	Chrome	\$ 42.89
	DH561W	155°F 68°C	White	\$ 42.89
	DH562B	200°F 93°F	Bronze	\$ 39.11
	DH562C	200°F 93°F	Chrome	\$ 42.89
	DH562W	200°F 93°F	White	\$ 42.89
G/F2 ESCUTCHEONS				
	GF2B	1/2" (15mm)	Brass	\$ 11.87
	GF2C	1/2" (15mm)	Chrome	\$ 6.47
	GF2W	1/2" (15mm)	White	\$ 6.47



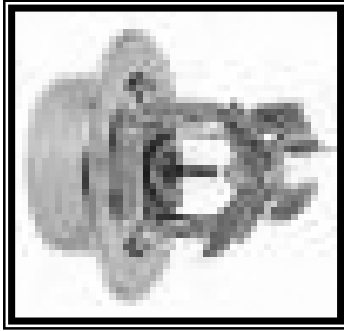
DH56 CONCEALED

DH56 CONCEALED—SPRINKLER AND CUP ONLY				
	DH56C1	155°F 68°C	Bronze	\$ 41.63
	DH56C2	200°F 93°F	Bronze	\$ 41.63
REQUIRED CCP COVERPLATE				
	CHWNS	135°F 57°C	White	\$ 21.84
	WGFR	Requires Model GFR Sprinkler Wrench		\$ 190.00

Please refer to the latest sales bulletin for specific approval listings and available finishes.
See our "Specialties Page" for special finish charges — including Teflon Tape.
Items that are MTO (indicated by "x") allow 7-10 work days.

FEATURES:

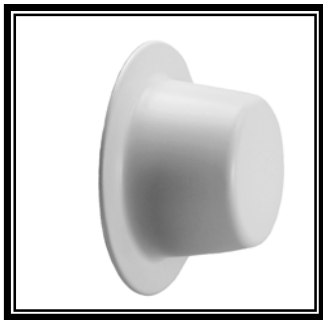
- Extended Coverage, Light Hazard Horizontal Sidewall
- Coverage for long and narrow spaces - hallways, corridors, and decks
- Quick Response for 28' x 8' and 28' x 10' coverage
- 250 psi (17,2) rated



DH80

- Quick Response
- Extended Coverage
- Light Hazard Applications
- HSW
- HSW Recessed
- See Bulletin 003

M T O	Part Number	Temperature	Finish	List Price
DH80				
	DH1B	155°F 68°F	Bronze	\$ 42.08
	DH1C	155°F 68°F	Chrome	\$ 45.48
	DH1W	155°F 68°F	White	\$ 45.48
FP PUSH-ON/THREAD-OFF ESCUTCHEON (FOR RECESSED)				
	FPLC	3/4" (20mm)	Chrome	\$ 12.47
	FPLW	3/4" (20mm)	White	\$ 12.47
F2 ESCUTCHEON & COLLAR ASSEMBLY (FOR RECESSED)				
	GF2LB	3/4" (20mm)	Bronze	\$ 11.87
	GF2LC	3/4" (20mm)	Chrome	\$ 6.47
	GF2LW	3/4" (20mm)	White	\$ 6.47



DH80 CONCEALED

*Coverage up to
28' wide and
14' long*

DH80 CONCEALED—SPRINKLER AND CUP ONLY				
	DHC1	155°F 68°F	Bronze	\$ 44.65
REQUIRED CCP COVERPLATE				
	CHWNS	135°F 57°C	White	\$ 21.84
	WGFR	Requires Model GFR1 Sprinkler Wrench		\$ 190.00

FEATURES:

1. The sprinkler designed for Long & Narrow applications - hallways, corridors, decks, and rooms up to 28 feet wide and 14 feet long.
2. Deflector to ceiling dimensions are: 4"(100mm) min. to 12"(305mm) max.
3. Minimum spacing between sprinklers 12 feet (2.4m).
4. UL Listed for light hazard applications.
5. 8.0 K Factor.
6. Rugged, damage resistant assembly. No exposed thermal element with the concealed version.
7. Push-on/thread-off sturdy convenient escutcheon for recessed and cover for concealed.

Please refer to the latest sales bulletin for specific approval listings and available finishes.
See our "Specialties Page" for special finish charges — including Teflon Tape.
Items that are MTO (indicated by "x") allow 7-10 work days.



G4 XLO QREC/EC
"The ConcealerPlus"

- Concealed
- See Bulletin 144

M T O	Part Number	Temperature		Finish	List Price
	.64" (16MM) ORIFICE, 3/4" NPT THREADS — SPRINKLER ONLY				
	G4X1	165°F	74°C	Bronze	\$ 45.76
	REQUIRED COVERPLATES				
X	CG40B	135°F	57°C	Bronze	\$ 31.20
X	CG40C	135°F	57°C	Chrome	\$ 22.88
X	CG40W	135°F	57°C	White	\$ 22.88
X	CG40SP	135°F	57°C	Specialty	\$ 31.20

WXLOEC Requires Model GXLO Sprinkler Wrench \$ 189.00

Sprinkler	Coverplate
165°F/74°C	135°F/57°C

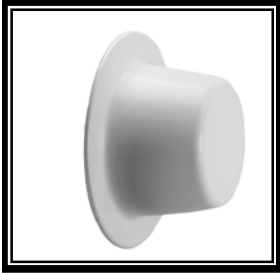
Benefits Include:

- 11.2 K Factor
- Coverage up to 20' x 20'
- Quick Response for 16' x 16' and 18' x 18'
- 1/2" Coverplate adjustment for ease of installation
- Sleek, flat coverplate and competitively priced

Notes:

For custom finishes, customer should provide paint sample.
Allow at least 2-3 weeks. A set-up charge is required for all orders under 500 pieces. Consult factory for details.

Please refer to the latest sales bulletin for specific approval listings and available finishes.
See our "Specialties Page" for special finish charges — including Teflon Tape.
Items that are MTO (indicated by "x") allow 7-10 work days.



*Coverages
up to
16' x 22'*

M T O	Part Number	Temperature	Finish	List Price
17/32" ORIFICE 3/4" NPT THREADS (20MM) — SPRINKLER ONLY				
	CEC9	135°F 57°C	Bronze	\$ 37.81
X	CEC91	155°F 68°C	Bronze	\$ 37.81
REQUIRED COVERPLATES (1/2" ADJUSTMENT)				
	CHWNS	135°F 57°C	White	\$ 21.84
X	CHSPNS	135°F 57°C	Specialty	\$ 32.76

WGFR Requires Model GFR1 Wrench \$ 190.00

F1FR HSW QREC-9 CCP

"SWC Concealer"

- Quick Response
- Extended Coverage
- HSW Concealed
- 175 & 300 PSI Rated
- See Bulletin 163

The Industry's FIRST Horizontal Sidewall Concealer

Good for: Student Dorms
Hotels, Hospitals & Care Facilities!

Notes:

For custom finishes, customer should provide paint sample.
Allow at least 2-3 weeks. A set-up charge is required for all orders under 500 pieces. Consult factory for details.

* Covers can not be plated - only painted.

Please refer to the latest sales bulletin for specific approval listings and available finishes.
See our "Specialties Page" for special finish charges — including Teflon Tape.
Items that are MTO (indicated by "x") allow 7-10 work days.