



**DDX Deluge Valve**



**DDX Deluge Valve Stainless Steel - 8" Size**

Description	Part Number	List Price
<b>MODEL DDX - DELUGE VALVES FULLY ASSEMBLED - ELECTRIC TRIM</b>		
2" Electric Release	2DDXFE	\$ 7,232.00
2" Electric Release w/Control Valve	2DDXFEV	\$ 8,048.00
2-1/2" Electric Release	25DDXFE	\$ 7,232.00
2-1/2" Electric Release w/Control Valve	25DDXFEV	\$ 8,048.00
3" Electric Release	3DDXFE	\$ 7,465.00
3" Electric Release w/Control Valve	3DDXFEV	\$ 8,165.00
76MM Electric Release	6505027611	\$ 7,465.00
4" Electric Release	4DDXFE	\$ 7,473.00
4" Electric Release w/Control Valve	4DDXFEV	\$ 8,284.00
6" Electric Release	6DDXFE	\$ 8,348.00
6" Electric Release w/Control Valve	6DDXFEV	\$ 9,481.00
165MM, DDX, Valve, w/Electric	6505065211	\$ 8,348.00
8" Electric Release	8DDXFE	\$ 11,342.00
8" Electric Release w/Control Valve	8DDXFEV	\$ 13,268.00
8" Stainless Steel Electric Release	8DDXSSFE	\$ 26,215.00
<b>MODEL DDX - DELUGE VALVES FULLY ASSEMBLED - WET PILOT LINE TRIM</b>		
2" Wet Pilot Line	2DDXFW	\$ 6,182.00
2" Wet Pilot Line w/Control Valve	2DDXFWV	\$ 6,998.00
2-1/2" Wet Pilot Line	25DDXFW	\$ 6,182.00
2-1/2" Wet Pilot Line w/Control Valve	25DDXFWV	\$ 6,998.00
3" Wet Pilot Line	3DDXFW	\$ 6,415.00
3" Wet Pilot Line w/Control Valve	3DDXFWV	\$ 7,232.00
76MM Wet Pilot Line	6505027601	\$ 6,415.00
4" Wet Pilot Line	4DDXFW	\$ 6,577.00
4" Wet Pilot Line w/Control Valve	4DDXFWV	\$ 7,388.00
6" Wet Pilot Line	6DDXFW	\$ 7,451.00
6" Wet Pilot Line w/Control Valve	6DDXFWV	\$ 8,588.00
165MM, DDX, Valve, w/Wet Pilot	6505065201	\$ 7,452.00
8" Wet Pilot Line	8DDXFW	\$ 11,021.00
8" Wet Pilot Line w/Control Valve	8DDXFWV	\$ 13,375.00
8" Stainless Steel Wet Pilot Line	8DDXSSFW	\$ 25,145.00
<b>MODEL DDX - DELUGE VALVES FULLY ASSEMBLED - DRY PILOT LINE TRIM</b>		
2" Dry Pilot Line	2DDXFDP	\$ 7,348.00
2" Dry Pilot Line w/Control Valve	2DDXFDPV	\$ 8,165.00
2-1/2" Dry Pilot Line	25DDXFDP	\$ 7,348.00
2-1/2" Dry Pilot Line w/Control Valve	25DDXFDPV	\$ 8,165.00
3" Dry Pilot Line	3DDXFDP	\$ 7,581.00
3" Dry Pilot Line w/Control Valve	3DDXFDPV	\$ 8,398.00
76MM Dry Pilot Line	6505027606	\$ 7,581.00
4" Dry Pilot Line	4DDXFDP	\$ 7,692.00
4" Dry Pilot Line w/Control Valve	4DDXFDPV	\$ 8,504.00
6" Dry Pilot Line	6DDXFDP	\$ 8,567.00
6" Dry Pilot Line w/Control Valve	6DDXFDPV	\$ 9,703.00
165MM, DDX, Valve, w/ Dry Pilot line	6505065206	\$ 8,567.00
8" Dry Pilot Line	8DDXFDP	\$ 11,556.00
8" Dry Pilot Line w/Control Valve	8DDXFDPV	\$ 14,124.00
8" Stainless Steel Dry Pilot Line	8DDXSSFDP	\$ 28,890.00

**SPECIAL HAZARDS**

**SPECIAL SYSTEMS**

- See Bulletins 512, 510, 514 (DDX Deluge Valve)
- See Bulletin 516 (DDX Valve Stainless Steel)
- See Bulletins 736, 727, 743, 731, 741, 735, 732, 742 (Single Interlock)
- See Bulletins 737, 738, 728, 729, 744, 745 (Double Interlock)

**Please note:**

250 psi and ULC Listed also available upon request

Special Hazards  
Special Systems



**DDX Deluge Valve**



**DDX Deluge Valve Stainless Steel - 8" Size**

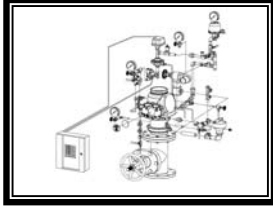
Description	Part Number	List Price
<b>MODEL DDX - DELUGE VALVE ONLY (GROOVED X GROOVED)</b>		
Model DDX - 2"	2DDX	\$ 3,616.00
Model DDX - 2-1/2"	25DDX	\$ 3,616.00
Model DDX - 3"	3DDX	\$ 3,732.00
Model DDX - 76MM	76DDX	\$ 3,732.00
Model DDX - 4"	4DDX	\$ 3,814.00
Model DDX - 6"	6DDX	\$ 4,689.00
Model 165MM	6103060028	\$ 4,689.00
Model DDX - 8"	8DDX	\$ 7,790.00
Model DDX Stainless Steel - 8"	8DDXSS	\$ 16,585.00
<b>1-1/2" DELUGE / PREACTION RISER ASSEMBLIES</b>		
Model H(65030030001)	15D	\$ 4,706.00
Solenoid Valve Repair Kit	SVRK	\$ 1,740.00
<b>DELUGE TRIM ONLY — SEGMENTALLY ASSEMBLED</b>		
Wet Pilot Line 2", 2-1/2" & 3"	25DDXWP	\$ 1,949.00
Wet Pilot Line 4" & 6"	4DDXWP	\$ 1,949.00
Wet Pilot Line 8"	8DDXWP	\$ 3,424.00
Wet Pilot Line 8" Stainless Steel	8DDXSSWP	\$ 8,132.00
Dry Pilot Line 2", 2-1/2" & 3"	25DDXDPP	\$ 3,096.00
Dry Pilot Line 4" & 6"	4DDXDPP	\$ 3,095.00
Dry Pilot Line 8"	8DDXDPP	\$ 4,708.00
Dry Pilot Line 8" Stainless Steel	8DDXSSDPP	\$ 11,449.00
Electric Release 2", 2-1/2" & 3"	25DDXEP	\$ 2,871.00
Electric Release 4" & 6"	4DDXEP	\$ 2,870.00
Electric Release 8"	8DDXEP	\$ 4,066.00
Electric Release 8" Stainless Steel	8DDXSSEP	\$ 9,470.00
<b>DELUGE TRIM ONLY — INDIVIDUAL PARTS</b>		
Wet Pilot Line 2", 2-1/2" & 3"	25DDXWL	\$ 1,832.00
Wet Pilot Line 4" & 6"	4DDXWL	\$ 1,832.00
Wet Pilot Line 8"	8DDXWL	\$ 2,354.00
Wet Pilot Line 8" Stainless Steel	8DDXSSWL	\$ 6,955.00
Dry Pilot Line 2", 2-1/2" & 3"	25DDXDPL	\$ 2,878.00
Dry Pilot Line 4" & 6"	4DDXDPL	\$ 2,878.00
Dry Pilot Line 8"	8DDXDPL	\$ 3,638.00
Dry Pilot Line 8" Stainless Steel	8DDXSSDPL	\$ 10,379.00
Electric Release 2", 2-1/2" & 3"	25DDXEL	\$ 2,639.00
Electric Release 4" & 6"	4DDXEL	\$ 2,639.00
Electric Release 8"	8DDXEL	\$ 3,210.00
Electric Release 8" Stainless Steel	8DDXSSEL	\$ 8,346.00

SPECIAL HAZARDS

SPECIAL SYSTEMS

- See Bulletins 512, 510, 514 (DDX Deluge Valve)
- See Bulletin 516 (DDX Valve Stainless Steel)
- See Bulletins 736, 727, 743, 731, 741, 735, 732, 742 (Single Interlock)
- See Bulletins 737, 738, 728, 729, 744, 745 (Double Interlock)

Special Hazards  
Special Systems



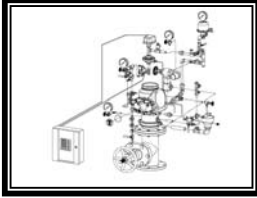
**Preaction  
Systems with  
our DDX Valve**

SPECIAL HAZARDS

SPECIAL SYSTEMS

- See Bulletins 736, 727, 743, 734, 731, 741, 735, 732, 742, 730, 737, 738, 728, 729, 744, 745

Description	Part Number	List Price
<b>MODEL DDX - DELUGE VALVE FULLY ASSEMBLED - ELECTRIC - SINGLE INTERLOCK</b>		
2" Electric Single Interlock	2DDXFS	\$ 7,465.00
2" Electric Single Interlock w/Control Valve	2DDXFSV	\$ 8,165.00
2-1/2" Electric Single Interlock	25DDXFS	\$ 7,465.00
2-1/2" Electric Single Interlock w/Control Valve	25DDXFSV	\$ 8,165.00
3" Electric Single Interlock	3DDXFS	\$ 7,698.00
3" Electric Single Interlock w/Control Valve	3DDXFSV	\$ 8,398.00
4" Electric Single Interlock	4DDXFS	\$ 7,815.00
4" Electric Single Interlock w/Control Valve	4DDXFSV	\$ 8,514.00
6" Electric Single Interlock	6DDXFS	\$ 8,514.00
6" Electric Single Interlock w/Control Valve	6DDXFSV	\$ 9,681.00
8" Electric Single Interlock	8DDXFS	\$ 11,449.00
8" Electric Single Interlock w/Control Valve	8DDXFSV	\$ 13,589.00
<b>MODEL DDX - DELUGE VALVE FULLY ASSEMBLED - ELECTRIC - SINGLE INTERLOCK</b>		
2" Single Interlock - Wet Pilot Line	2DDXFWS	\$ 6,415.00
2" Single Interlock - Wet Pilot Line w/Control Valve	2DDXFWSV	\$ 7,815.00
2-1/2" Single Interlock - Wet Pilot Line	25DDXFWS	\$ 6,415.00
2-1/2" Single Interlock - Wet Pilot Line w/Control Valve	25DDXFWSV	\$ 7,815.00
3" Single Interlock - Wet Pilot Line	3DDXFWS	\$ 6,648.00
3" Single Interlock - Wet Pilot Line w/Control Valve	3DDXFWSV	\$ 7,581.00
4" Single Interlock - Wet Pilot Line	4DDXFWS	\$ 6,823.00
4" Single Interlock - Wet Pilot Line w/Control Valve	4DDXFWSV	\$ 7,581.00
6" Single Interlock - Wet Pilot Line	6DDXFWS	\$ 7,698.00
6" Single Interlock - Wet Pilot Line w/Control Valve	6DDXFWSV	\$ 8,806.00
8" Single Interlock - Wet Pilot Line	8DDXFWS	\$ 10,914.00
8" Single Interlock - Wet Pilot Line w/Control Valve	8DDXFWSV	\$ 12,947.00
<b>MODEL DDX - DELUGE VALVE FULLY ASSEMBLED - DRY PILOT LINE - SINGLE INTERLOCK</b>		
2" Single Interlock - Dry Pilot Line	2DDXFDS	\$ 7,581.00
2" Single Interlock - Dry Pilot Line w/Control Valve	2DDXFDSV	\$ 8,398.00
2-1/2" Single Interlock - Dry Pilot Line	25DDXFDS	\$ 7,581.00
2-1/2" Single Interlock - Dry Pilot Line w/Control Valve	25DDXFDSV	\$ 8,398.00
3" Single Interlock - Dry Pilot Line	3DDXFDS	\$ 7,815.00
3" Single Interlock - Dry Pilot Line w/Control Valve	3DDXFDSV	\$ 8,631.00
4" Single Interlock - Dry Pilot Line	4DDXFDS	\$ 7,931.00
4" Single Interlock - Dry Pilot Line w/Control Valve	4DDXFDSV	\$ 8,631.00
6" Single Interlock - Dry Pilot Line	6DDXFDS	\$ 8,806.00
6" Single Interlock - Dry Pilot Line w/Control Valve	6DDXFDSV	\$ 9,972.00
8" Single Interlock - Dry Pilot Line	8DDXFDS	\$ 11,663.00
8" Single Interlock - Dry Pilot Line w/Control Valve	8DDXFDSV	\$ 14,124.00



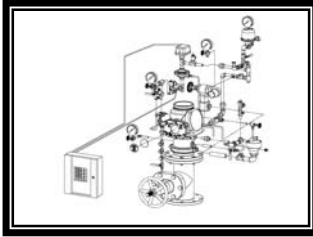
**Preaction  
Systems with  
our DDX Valve**

SPECIAL HAZARDS

SPECIAL SYSTEMS

- See Bulletins 736, 727, 743, 734, 731, 741, 735, 732, 742, 730, 737, 738, 728, 729, 744, 745

Description	Part Number	List Price
<b>MODEL DDX - DELUGE VALVE FULLY ASSEMBLED - DOUBLE INTERLOCK - TYPE D</b>		
2" Double Type D	2DDXFD	\$ 9,448.00
2" Double Type D w/Control Valve	2DDXFDV	\$ 10,264.00
2-1/2" Double Type D	25DDXFD	\$ 9,448.00
2-12" Double Type D w/Control Valve	25DDXFDV	\$ 10,264.00
165MM, DDX, Valve, w/ Dry Pilot line	3DDXFD	\$ 9,564.00
3" Double Type D w/Control Valve	3DDXFDV	\$ 10,381.00
4" Double Type D	4DDXFD	\$ 9,657.00
4" Double Type D w/Control Valve	4DDXFDV	\$ 10,418.00
6" Double Type D	6DDXFD	\$ 10,626.00
6" Double Type D w/Control Valve	6DDXFDV	\$ 11,761.00
8" Double Type D	8DDXFD	\$ 12,519.00
8" Double Type D w/Control Valve	8DDXFDV	\$ 14,766.00
<b>MODEL DDX - DELUGE VALVE FULLY ASSEMBLED - DOUBLE INTERLOCK - TYPE F</b>		
2" Double Type F	2DDXFF	\$ 9,797.00
2" Double Type F w/Control Valve	2DDXFFV	\$ 10,614.00
2-1/2" Double Type F	25DDXFF	\$ 9,797.00
2-12" Double Type F w/Control Valve	25DDXFFV	\$ 10,614.00
3" Double Type F	3DDXFF	\$ 9,797.00
3" Double Type F w/Control Valve	3DDXFFV	\$ 10,614.00
4" Double Type F	4DDXFF	\$ 9,882.00
4" Double Type F w/Control Valve	4DDXFFV	\$ 10,712.00
6" Double Type F	6DDXFF	\$ 10,900.00
6" Double Type F w/Control Valve	6DDXFFV	\$ 12,035.00
8" Double Type F	8DDXFF	\$ 13,375.00
8" Double Type F w/Control Valve	8DDXFFV	\$ 14,766.00

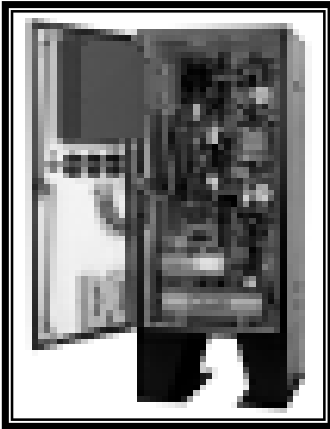


## Preaction Systems with our DDX Valve

### SPECIAL HAZARDS SPECIAL SYSTEMS

- See Bulletins 736, 727, 743, 734, 731, 741, 735, 732, 742, 730, 737, 738, 728, 729, 744, 745

Description	Part Number	List Price
<b>PREACTION TRIM — SINGLE INTERLOCK - SEGMENTALLY ASSEMBLED</b>		
Wet Pilot Line 2", 2-1/2" & 3"	25DDXWSP	\$ 2,183.00
Wet Pilot Line 4" & 6"	4DDXWSP	\$ 2,183.00
Wet Pilot Line 8"	8DDXWSP	\$ 4,280.00
Dry Pilot Line 2", 2-1/2" & 3"	25DDXDSP	\$ 3,329.00
Dry Pilot Line 4" & 6"	4DDXDSP	\$ 3,329.00
Dry Pilot Line 8"	8DDXDSP	\$ 5,136.00
Electric Release 2", 2-1/2" & 3"	25DDXESP	\$ 3,104.00
Electric Release 4" & 6"	4DDXESP	\$ 3,104.00
Electric Release 8"	8DDXESP	\$ 4,066.00
<b>PREACTION TRIM — SINGLE INTERLOCK - INDIVIDUAL PARTS</b>		
Wet Pilot Line 2", 2-1/2" & 3"	25DDXWSL	\$ 1,955.00
Wet Pilot Line 4" & 6"	4DDXWSL	\$ 1,955.00
Wet Pilot Line 8"	8DDXWSL	\$ 2,568.00
Dry Pilot Line 2", 2-1/2" & 3"	25DDXDSL	\$ 3,112.00
Dry Pilot Line 4" & 6"	4DDXDSL	\$ 3,112.00
Dry Pilot Line 8"	8DDXDSL	\$ 4,173.00
Electric Release 1-1/2"	15PTSL	\$ 978.00
Electric Release 2", 2-1/2" & 3"	25DDXESL	\$ 2,872.00
Electric Release 4" & 6"	4DDXESL	\$ 2,872.00
Electric Release 8"	8DDXESL	\$ 2,996.00
<b>PREACTION TRIM — DOUBLE INTERLOCK - INDIVIDUAL PARTS</b>		
1-1/2" Type D	15PTDL	\$ 2,399.00
2", 2-1/2" & 3" Type D	25DDXDL	\$ 4,904.00
4" & 6" Type D	4DDXDL	\$ 4,904.00
8" Type D	8DDXDL	\$ 4,904.00
2", 2-1/2" & 3" Type F	25DDXFL	\$ 5,188.00
4" & 6" Type F	4DDXFL	\$ 5,188.00
8" Type F	8DDXFL	\$ 5,188.00
<b>PREACTION TRIM — DOUBLE INTERLOCK - SEGMENTALLY ASSEMBLED</b>		
2", 2-1/2" & 3" Type D	25DDXDP	\$ 5,210.00
4" & 6" Type D	4DDXDP	\$ 5,210.00
8" Type D	8DDXDP	\$ 5,243.00
2", 2-1/2" & 3" Type F	25DDXFP	\$ 5,493.00
4" & 6" Type F	4DDXFP	\$ 5,492.00
8" Type F	8DDXFP	\$ 5,671.00



SPECIAL HAZARDS

SPECIAL SYSTEMS

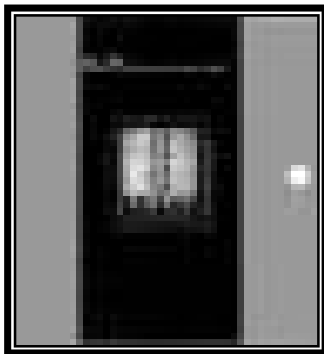
- **The PrePaK System**
- **See Bulletins 723, 724, 725  
740 & 733**

Description	Part Number	List Price
<b>PREPAK SYSTEM</b>		
PrePaK 1-1/2"	15PREPAK	\$ 37,000.00
PrePaK with 2" DDX Valve	2DDXPAK	\$ 38,000.00
PrePaK with 2-1/2" DDX Valve	25DDXPAK	\$ 38,500.00
PrePaK with 3" DDX Valve	3DDXPAK	\$ 40,000.00
PrePaK with 4" DDX Valve	4DDXPAK	\$ 42,100.00
PrePaK with 6" DDX Valve and 3/4" HP Air Compressor	6DDXPAK	\$ 47,900.00
PrePaK with 6" DDX Valve and 1-1/2" HP Air Compressor	6DDXPAK15	\$ 50,500.00
PrePaK 1-1/2" — For Canada	15PREPAKC	\$ 37,000.00
PrePaK with 2" DDX Valve — For Canada	2DDXPAKC	\$ 38,000.00
PrePaK with 2-1/2" DDX Valve — For Canada	25DDXPAKC	\$ 38,500.00
PrePaK with 3" DDX Valve — For Canada	3DDXPAKC	\$ 40,000.00
PrePaK with 4" DDX Valve — For Canada	4DDXPAKC	\$ 42,100.00
PrePaK w-6" DDX & 3/4" HP Air Comp — For Canada	6DDXPAKC	\$ 47,900.00
PrePaK w-6" DDX & 1-1/2" HP Air Comp — For Canada	6DDXPAKC15	\$ 50,500.00

- Our PrePaKs are smaller in size and weight –**up to 33% smaller and over 300 lbs. lighter than the competition**
- Now available in smaller sizes – 2", 2 ½", and 3" – as well as 4" and 6"
- Our DDX PrePaKs are cULus Listed and FM Approved
- Potter – PFC-4410-RC Releasing Control Panel (Single or Double Interlock by a simple program selection)
- Retains UL Listing when using an external UL Listed Releasing Control Panel
- Complete with Tank & Air Compressor
- Weighs less & is smaller in size than the previous BX versions
- Fits through a 30" x 69" Opening
- Refer to Bulletins 740 and 733

**Please note:**

220 Volt & 250 psi PrePaKs are available as special orders



SPECIAL HAZARDS

SPECIAL SYSTEMS

- See Bulletins 707, 708

Description	Part Number	List Price
<b>ACCELERATOR</b>		
B1 Accelerator	AE	\$ 1,389.00
B2 Accelerator Trim	ACT	\$ 571.00
B - Replacement Parts Kits	BRPK	\$ 472.00
B1 - Replacement Parts Kits	B1RPK	\$ 472.00
<b>SOLENOID VALVE &amp; PULL BOX/STATIONS</b>		
Solenoid Valve - LV2LBX25 - 24 V DC	SOL2	\$ 637.00
Solenoid Valve - LV2LBX15 - 115V AC	SOL2A	\$ 976.00
Model A - Hydraulic Manual Pull Box	HMBOX	\$ 446.50
Elect. Man. Emergency Station (Single)	BNG1	\$ 250.60
Elect. Man. Emergency Station (Dbl)	BNG1F	\$ 351.50
<b>RPC4410 PANEL - TYPE D SYSTEMS</b>		
RPC 4410RC Panel	PFCPANEL	\$ 3,012.20
<b>BATTERIES (2 REQUIRED)</b>		
PS 1270 12 Volt, 7 AMP (UL Systems)	BATUL	\$ 200.00
PS 12120 12 Volt, 12 AMP (FM Systems)	BATFM	\$ 297.00
<b>SYSTEM MODULES</b>		
Transmitter (4XTM)	4XTM	\$ 509.10
Annunciator Drive (4XLM)	4XLM	\$ 509.10
Remote Annunciator (RZX 4X)	RZX4X	\$ 509.10
Zone Relay (4XZM)	4XZM	\$ 509.10

Description	Part Number	List Price
<b>DRAIN ASSEMBLIES</b>		
2 - 1/2" Deluge	6501180302	\$ 567.00
4 & 6" Deluge	6501180300	\$ 611.00
2 - 1/2" Preaction	6501180102	\$ 646.00
4" Preaction	6501180100	\$ 698.00
6" Preaction	6501180200	\$ 698.00
<b>DRY PILOT ACTUATOR</b>		
Dry Pilot Actuator	71030000	\$ 982.00
<b>CHEMETRON 600 SERIES RATE OF RISE DETECTORS</b>		
601 -- 135°F	601	\$ 90.60
602 -- 200°F	602	\$ 90.60
603 -- 135°F Fixed	603	\$ 90.60
604 -- 200°F Fixed	604	\$ 90.60
<b>SMOKE DETECTORS</b>		
Ionization	SMOKEI	\$ 246.00
Photoelectric	SMOKEP	\$ 246.00
Mounting base	MB	\$ 65.00
<b>FLAME DETECTORS (AVAILABLE UPON REQUEST)</b>		
<b>THERMAL DETECTORS</b>		
135° Interior — Vertical Mounted	6611442030	\$ 127.70
200° Interior — Vertical Mounted	6611442035	\$ 127.70
135° Weatherproof — Vertical Mounted	6611442010	\$ 135.90
200° Weatherproof — Vertical Mounted	6611442015	\$ 135.90
135° Interior — Horizontal Mounted	6611442020	\$ 140.00
200° Interior — Horizontal Mounted	6611442025	\$ 140.00
Adaptor Plate	6611782010	\$ 24.80

SPECIAL HAZARDS  
SPECIAL SYSTEMS

- See Bulletin 707

Description	Part Number	List Price
<b>ELECTRIC ALARM BELLS</b>		
6" — 24 VDC	6KMS	\$ 68.50
8" — 24 VDC	8KMS	\$ 86.00
10" — 24VDC	10KMS	\$ 97.00
6" — 120 VAC	6KBS	\$ 68.50
8" — 120 VAC	8KBS	\$ 86.00
10" — 120 VAC	10KBS	\$ 97.00
WBB Weatherproof Black Box	WBB	\$ 38.50
<b>SUPERVISORY AIR SUPPLY</b>		
B Air Compressor Panel (120 V/AC)	BACP	\$ 3,705.00
B Air Compressor Panel (220 V/AC)	BACP2	\$ 4,338.00
A-2 Air Maint. Dev. (Owner's Air)	AMDAG	\$ 872.00
B-1 Air Maint. Dev. (Ind. Compress)	AMDBG	\$ 990.00
C Air Maint. Dev. (Supertrol System)	AMDCG	\$ 1,307.00
<b>VALVE SEAT WRENCHES</b>		
4" Model B & BX Deluge Valve	W4DV	\$ 192.00
6" Model B & BX Deluge Valve	W6DV	\$ 207.00

LPC SYSTEMS

Description	Part Number	Price
<b>LPC PREACTION SYSTEMS (COMPLETE)</b>		
100mm	6503004010	\$ 24,171.09
150mm	6503004015	\$ 25,492.94
<b>PREACTION SYSTEM COMPONENTS</b>		
CEL Prescient Panel	6999991602	\$ 3,908.91
CEL 3.2A Batteries	6999991603	\$ 226.62
Battery Cabinet	6999991604	\$ 226.62
LPC Single Interlock Trim	6503001605	\$ 1,888.37
<b>MISCELLANEOUS ITEMS</b>		
Explosion proof solenoid valve	6999990322	\$ 991.40

SPECIAL HAZARDS  
SPECIAL SYSTEMS

**Protectowire Linear  
Heat Detector (LHD)**



M T O	Description	Part Number	Short Code	List Price - Per Foot
<b>TYPE EPC CONSTRUCTION (VINYL JACKET)</b>				
X	Protectowire (155°F / 68°C) on Msg Wire	6999995589	PHSC-155-EPC-M	\$ 3.21
X	Protectowire (190°F / 88°C)	6999995590	PHSC-190-EPC	\$ 2.78
X	Protectowire (190°F / 88°C) on Msg Wire	6999995591	PHSC-190-EPC-M	\$ 3.21
X	Protectowire (220°F / 105°C)	6999995592	PHSC-220-EPC	\$ 2.68
X	Protectowire (220°F / 105°C) on Msg Wire	6999995593	PHSC-220-EPC-M	\$ 3.10
X	Protectowire (280°F / 138°C)	6999995594	PHSC-280-EPC	\$ 2.78
X	Protectowire (280°F / 138°C) on Msg Wire	6999995595	PHSC-280-EPC-M	\$ 3.21
X	Protectowire (356°F / 180°C) on Msg Wire	6999995596	PHSC-356-EPC-M	\$ 3.32
<b>TYPE EPN CONSTRUCTION (NYLON OVER VINYL JACKET)</b>				
X	Protectowire (190°F / 88°C)	6999995597	PHSC-190-EPN	\$ 3.10
X	Protectowire (190°F / 88°C) on Msg Wire	6999995598	PHSC-190-EPN-M	\$ 3.53
<b>TYPE EPR CONSTRUCTION (POLYPROPYLENE ELASTOMER JACKET)</b>				
X	Protectowire (155°F / 68°C)	6999995599	PHSC-155-EPR	\$ 3.00
X	Protectowire (155°F / 68°C) on Msg Wire	6999995600	PHSC-155-EPR-M	\$ 3.42
X	Protectowire (190°F / 88°C)	6999995601	PHSC-190-EPR	\$ 3.00
X	Protectowire (190°F / 88°C) on Msg Wire	6999995602	PHSC-190-EPR-M	\$ 3.42
X	Protectowire (280°F / 138°C)	6999995603	PHSC-280-EPR	\$ 3.00
X	Protectowire (280°F / 138°C) on Msg Wire	6999995604	PHSC-280-EPR-M	\$ 3.42
X	Protectowire (356°F / 180°C)	6999995605	PHSC-356-EPR	\$ 3.10
X	Protectowire (356°F / 180°C) on Msg Wire	6999995606	PHSC-356-EPR-M	\$ 3.53
<b>TYPE TRI CONSTRUCTION DUAL TEMPERATURE TRI-WIRE (VINYL JACKET)</b>				
X	Protectowire Dual Temp (155/200°F - 68/93°C)	6999995607	PHSC-6893-TRI	\$ 3.10
X	Protectowire Dual Temp (155/200°F - 68/93°C) on Msg Wire	6999995608	PHSC-6893-TRI-M	\$ 3.53
<b>TYPE XLT CONSTRUCTION (VINYL POLYMER JACKET)</b>				
X	Protectowire Type XLT (135°F / 57 °C)	6999995582	PHSC-135-XLT	\$ 2.78
X	Protectowire Type XLT (135°F / 57 °C) on MSG Wire	6999995609	PHSC-135-XLT-M	\$ 3.21

**Notes:**

- **Standard Packaging** - Standard packaging consists of 500 ft. (152m) coils and spools ranging in length from 2300 ft. (710m) to 3280 ft. (1000m) depending upon model ordered. In general, smaller lengths of 500 ft. or less will be on coils, and longer lengths on spools. The exact length of wire per spool used to complete each order is at the sole discretion of the factory. The policy is to send as few spools / coils as possible based upon stock availability.
- **Custom Lengths** - Custom cut single piece coils in lengths up to 1000 ft. (305m) or spools up to 3280 ft. (1000m) can be provided. Limitations may apply depending upon specific model ordered.
- **Messenger Wire Models** - Messenger wire reduces the maximum length of Protectowire that can be accommodated on a standard spool. Types EPC-M, EPR-M and XLT-M are limited to 2500 ft (762m) per spool. Types EPN-M and TRI-M are limited to 2300 ft. (701m) per spool.

SPECIAL HAZARDS  
SPECIAL SYSTEMS

**Protectowire Linear  
Heat Detector (LHD)  
Installation Accessories**



M T O	Description	Part Number	Short Code	List Price
<b>COMMERCIAL TYPE ZONE/END-OF-LINE JUNCTION BOXES</b>				
X	Non-metallic Moisture Proof box w/compression terminals	6999995610	ZB-4-QC-MP	\$ 39.59
X	Strain Relief Connector (One each req'd per penetration)	6999995585	SR-502	\$ 9.63
<b>HEAVY DUTY TYPE ZONE/END-OF-LINE JUNCTION BOXES</b>				
X	Fiberglass NEMA-4X Type JIC Enclosure w/compression terminals	6999995584	ZB-HD-4-QC (N4X)	\$ 160.50
X	Strain Relief Connector (One each req'd per penetration)	6999995585	SR-502	\$ 9.63
<b>WIRING ACCESSORIES</b>				
X	Splicing Connectors (10/pk, SFTS Sealant Recommended)	6999995586	PWSC	\$ 12.84
X	3 Pole Splicing Connectors for TRI-Wire (10/pk, SFTS Sealant Recommended)	6999995611	PWSC - 3	\$ 12.84
X	Splicing Sleeves (10/pk)	6999995612	PWS	\$ 12.84
X	Tape Sealant for PWSC Splice Connectors (20-30 splices)	6999995613	SFTS-1-8F	\$ 19.26
X	Flexible Leads	6999995614	PFL	\$ 19.26
X	Splicing Tape - White	6999995615	#35 White	\$ 10.70
X	Splicing Tape - Red	6999995616	#35 Red	\$ 10.70
X	Splicing Tape - Blue	6999995617	#35 Blue	\$ 10.70
X	Splicing Tape - Black (Low Temp Tape for freezer applications)	6999995618	33+	\$ 9.63
X	Wire Dispensing Reel for Coils	6999995619	SU-15	\$ 214.00
<b>FASTENERS - GENERAL PURPOSE APPLICATIONS</b>				
X	Clips, Corner, Nylon - White	6999995583	WAW-N	\$ 0.43
X	Clips, Corner, Polypropylene - Clear	6999995620	WAW-P	\$ 0.43
X	Clips, Line (Use with Type EPR, EPC, EPN & TRI Protectowire)	6999995621	OHS-1	\$ 0.54
X	304 Stainless Steel Line Clip w/ 1/4" hole (Use w/ all LHD types)	6999995622	OHS-SS	\$ 2.14
X	Beam Clamp Assembly (Steel)	6999995623	BC-2	\$ 2.68
X	Iron Zinc Plated Beam Clamp Assembly (w/ Polypropylene clip)	6999995624	BC-3P	\$ 3.21
X	Iron Zinc Plated Beam Clamp Assembly (w/ Nylon clip)	6999995625	BC-3N	\$ 3.21
X	Drive Rings	6999995626	PDR	\$ 0.32
X	L-Bracket (Rim Seal Type)	6999995627	RMC-2	\$ 3.21
X	Stainless Steel L-Bracket (Rim Seal Type)	6999995628	RMC-3	\$ 10.70
X	Insulated Standoff	6999995629	TR-5G	\$ 5.35
X	Cable Mount (Requires Sikaflex adhesive)	6999995630	EMS-A-CO	\$ 1.61
X	Cable Tie (for EMS-A-CO)	6999995631	PLT1S-CO	\$ 0.86
<b>FASTENERS - CABLE TRAY APPLICATIONS</b>				
X	Mounting Clip (single piece)	6999995633	HPC-2	\$ 2.14
X	Mounting Clip Assembly	6999995634	CC-2N	\$ 2.14
X	Mounting Clip Assembly	6999995635	CC-2W	\$ 2.14
X	Mounting Clip Assembly	6999995636	CC-10N	\$ 2.68
X	Mounting Clip Assembly	6999995637	CC-10W	\$ 2.68
X	Mounting Clip Assembly w/ screw & lock nut	6999995638	CC-10N-S	\$ 3.21
X	Mounting Clip Assembly w/ screw & lock nut	6999995639	CC-10W-S	\$ 3.21
<b>FASTENERS - SPRINKLER PIPE MOUNTING</b>				
X	Pipe Mounting Strap - Nylon (3/4" to 2" pipe)	6999995640	PM-3A	\$ 0.96
X	Pipe Mounting Strap - Nylon (2-1/2" to 3-1/2" pipe)	6999995641	PM-3B	\$ 1.28
X	Pipe Mounting Strap - Nylon (4" to 6" pipe)	6999995642	PM-3C	\$ 6.42
<b>MESSENGER WIRE APPLICATIONS</b>				
X	Eyebolt	6999995643	TR-4A	\$ 2.14
X	Turnbuckle	6999995644	TR-24	\$ 5.89
X	304 Stainless Steel Eyebolt	6999995645	TR-4A-S	\$ 5.35
X	304 Stainless Steel Turnbuckle	6999995646	TR-24-S	\$ 12.84
<b>TEST EQUIPMENT</b>				
X	Fault Locator System	6999995647	MFL-92	\$ 9,972.40
X	Protectowire Alarm Point Locator Meter Adapter	6999995648	APL-90	\$ 845.30