



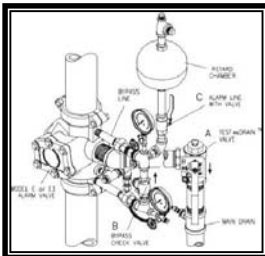
Model E1
Grooved x Flanged



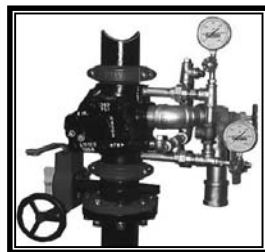
Model E1
Flanged x Flanged



Model E3
Grooved x Grooved



Model E3 With Trim
With TestAnDrain™



Model E3 With Trim
Without TestAnDrain™

ALARM VALVES

- See Bulletins 407, 417, 408, 418, 409, 410

Part Number		New E3		List Price
Flanged x Flanged	Flanged x Grooved	Grooved x Grooved	Size	
NEW MODEL E3 HIGH PRESSURE VALVE OR MODEL E VALVE				
25A	—	—	2-1/2"	\$ 1,260.00
3A	3AG	—	3"	\$ 1,260.00
4A	4AG	4AGG	4" (100mm)	\$ 1,260.00
6A	6AG	6AGG	6" (150mm)	\$ 1,549.00
8A	8AG	8AGG	8" (200mm)	\$ 2,257.00
NEW MODEL E3 HIGH PRESSURE VALVE OR E METRIC FLANGED				
65MMA	—	—	65MM Metric	\$ 1,204.74
100MMA	—	—	100MM Metric	\$ 1,240.70
150MMA	—	—	150MM Metric	\$ 1,438.49
—	—	6102065518	165MM Metric	\$ 1,474.48
200MMA	—	—	200MM Metric	\$ 1,888.04

Open	Closed	Description	List Price
NEW MODEL E3 GALVANIZED TRIM (ONLY) — PREASSEMBLED*			
—	4E3P	Vertical — 4", 6", 165mm	\$ 999.00
—	8E3P	Vertical — 8"	\$ 999.00
—	4E3HP	Horizontal — 4", 6", 165mm	\$ 1,018.00
—	8E3HP	Horizontal — 8"	\$ 1,018.00
—	4E3TDP	Vertical — 4", 6", 165mm (W/ Test And Drain)**	\$ 1,769.00
—	8E3TDP	Vertical — 8" (W/ Test And Drain)	\$ 1,769.00
—	4E3HTDP	Horizontal — 4", 6", 165mm (W/ Test And Drain)**	\$ 1,789.00
—	8E3HTDP	Horizontal — 8" (W/ Test And Drain)	\$ 1,789.00
—	OPEN	Optional Open Drain Kit (See Table Below)	\$ 226.00
—	E3PR	Optional E3 Pressure Relief Trim Kit (See Table Below)	\$ 273.00
NEW MODEL E3 GALVANIZED TRIM (ONLY) — LOOSE			
—	4E3L	Vertical — 4", 6", 165mm	\$ 815.00
—	8E3L	Vertical — 8"	\$ 815.00
—	4E3TDL	Vertical — 4", 6", 165mm (W/ Test And Drain)**	\$ 1,586.00
—	8E3TDL	Vertical — 8" (W/ Test And Drain)**	\$ 1,586.00
—	4E3HL	Horizontal — 4", 6", 165mm	\$ 835.00
—	8E3HL	Horizontal — 8"	\$ 835.00
—	4E3HTDL	Horizontal — 4", 6", 165mm (W/ Test And Drain)**	\$ 1,605.00
—	8E3HTDL	Horizontal — 8" (W/ Test And Drain)**	\$ 1,605.00
—	OPEN	Optional Open Drain Kit (See Table Below)	\$ 226.00
—	E3PR	Optional E3 Pressure Relief Trim Kit (See Table Below)	\$ 273.00
E1 TRIM (ONLY) PREASSEMBLED* OR LOOSE			
3TPO	3TPCG	2-1/2" Preassembled	\$ 999.00
3TO	3TCG	2-1/2" or 3" Loose	\$ 815.00

* Order Retard Chamber & Mechanical Sprinkler Alarm Separately

Open Trim Includes:

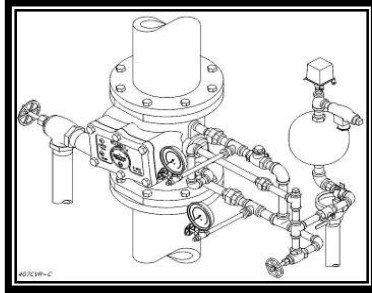
Item	P/N	Description	Units
1	75000050	Priming Cup, 1/2" NPT	1
2	98543212	Nipple, Pipe, Galv. 1/2" Close	2
3	98840181	Valve, Check Swing 1/2"	1
4	98174401	Elbow, Galv. 1/2" NPT	1
5	98543209	Nipple, Pipe Galv. 1/2" x 2"	1
6	96606623	Tee, Galv. 2" x 2" x 1/2"	1
7	98543291	Nipple, Pipe, Galv. 2" x 10"	1

Pressure Relief Trim Kit Includes:

Item	P/N	Description	Units
1	98840194	Relief Valve, 1/2", 175 psig	1
2	98543212	Nipple, Pipe Galv. 1/2" Close	1
3	96920925	Flex Line, Steel, 3/8" x 20"	1
4	98048022	Bushing Reducer, Galv. 1/2" x 3/4"	1
5	95086903	Tee, Male Branch, 3/8" x 1/4" NPT	1

**Test And Drain Valve, with optional Pressure Relief, exercises the Clapper with Alarm Test.

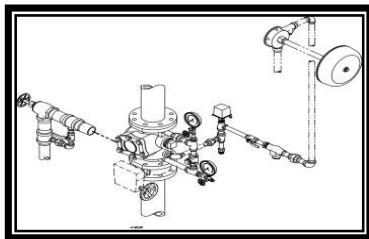
Functions like the Inspector's Test Port with greater convenience.



ALARM VALVES

- See Bulletins 407, 417, 408, 418

Description	Part Number	List Price
FULLY ASSEMBLED VALVE (FLANGED X FLANGED)		
2-1/2" Factory Trimmed	25AFTO	\$ 2,854.00
3" Factory Trimmed	3AFTO	\$ 2,854.00
4" Factory Trimmed	4AFT	\$ 2,854.00
6" Factory Trimmed	6AFT	\$ 3,131.00
8" Factory Trimmed	8AFT	\$ 3,866.00
FULLY ASSEMBLED VALVE (FLANGED X GROOVED)		
3" Factory Trimmed	3AGFTO	\$ 2,854.00
4" Factory Trimmed	4AGFT	\$ 2,854.00
6" Factory Trimmed	6AGFT	\$ 3,131.00
8" Factory Trimmed	8AGFT	\$ 3,866.00
FULLY ASSEMBLED VALVE (GROOVED X GROOVED)		
4" Factory Trimmed	4AGGFT	\$ 2,854.00
6" Factory Trimmed	6AGGFT	\$ 3,131.00
8" Factory Trimmed	8AGGFT	\$ 3,866.00



LPC VALVE SETS

Valve Stations complete

- Valve
- Trim (Segmented)
- Butterfly Valve

Description	Part Number	List Price
WET TRIM WITH RETARD		
100mm	6503004210	\$ 3,388.47
150mm	6503004215	\$ 3,935.56
200mm	6503004220	\$ 4,941.52
WET TRIM WITHOUT RETARD		
100mm	6503004100	\$ 3,141.39
150mm	6503004115	\$ 3,688.49
200mm	6503004120	\$ 4,694.43
WET/DRY TRIM WITH RETARD		
100mm	6503004410	\$ 6,865.19
150mm	6503004415	\$ 8,029.98
WET/DRY TRIM WITHOUT RETARD		
100mm	6503004310	\$ 6,600.45
150mm	6503004315	\$ 7,747.60
LPC VALVE TRIMS PART ASSEMBLED		
Wet Trim with Retard	6502070110	\$ 1,440.78
Wet Trim without Retard	6502070100	\$ 1,182.18
Wet/Dry Trim with Retard	6502070010	\$ 2,308.98
Wet/Dry Trim without Retard	6502070000	\$ 2,013.42



C — Mechanical Spk. Alarm

ALARM VALVES

- See Bulletins 407, 417, 408, 418

Description	Part Number	List Price
MISCELLANEOUS — ALARM VALVE TRIM		
Constant — 2-1/2" & 3"	6502054100	\$ 815.00
Constant — 4", 6" & 8"	6502053100	\$ 815.00
Press. Rel. kit — 2-1/2" & 3"	6502050000	\$ 265.00
Press. Rel. kit — 4", 6" & 8"	6502050000	\$ 265.00
Galvanized — 2-1/2" & 3"	6502053600	\$ 896.00
Galvanized — 4", 6" & 8"	6502053600	\$ 896.00
RETARD CHAMBER & MECHANICAL SPRINKLER ALARM		
Retard Chamber — E-1	RCT	\$ 501.00
Mech. Spk. Alarm — C	WM	\$ 679.00
VALVE SEAT WRENCHES		
2" & 3" Model E Alarm Valve	W23AV	\$ 163.00
4" Model E Alarm Valve	W4DV	\$ 180.00
6" Model E Alarm Valve	W6DV	\$ 193.00
8" Model E Alarm Valve	W8AV	\$ 207.00

* Order Retard Chamber & Mechanical Sprinkler Alarm Separately.



G Right Check Riser



G Swing Check



CVE Swing Check



DW Wafer

Part Name	Part Number	List Price
MODEL G RISER CHECK		
2-1/2"	25RC	\$ 546.00
3"	3RC	\$ 546.00
4"	4RC	\$ 546.00
6"	6RC	\$ 1,031.00
2-1/2" & 3" Trim	25RTG	\$ 370.00
4" & 6" Trim	4RTG	\$ 370.00
MODEL G GROOVE/GROOVE CHECK		
2-1/2"	25CK	\$ 378.00
3"	3CK	\$ 378.00
4"	4CK	\$ 378.00
6"	6CK	\$ 914.00
SWING CHECK VALVES - VALVES ONLY		
CVE 4" (100mm)	4CVE	\$ 998.27
CVE 6" (150mm)	6CVE	\$ 1,297.74
CVE 165mm	CVE165MM	\$ 1,297.74
CVE 8" (200mm)	8CVE	\$ 1,996.53
DW Wafer (4") - Add per valve	DW	\$ 417.00
FULLY ASSEMBLED SWING CHECK VALVES		
CVE 4" (100mm)	4CVET	\$ 1,494.00
CVE 6" (150mm)	6CVET	\$ 1,792.00
CVE 8" (200mm)	8CVET	\$ 2,615.51
TRIM FOR SWING CHECK VALVES		
All Sizes	6506000044	\$ 1,039.86

CHECK VALVES

- See Bulletins 803, 806, 807, 810