



### F1FR UPRIGHT

- Quick Response
- Glass Bulb
- See Bulletin 136

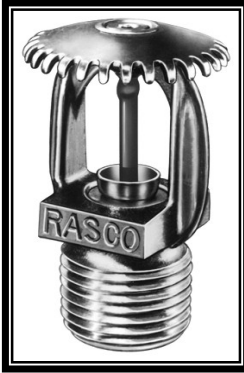
Please refer to the latest sales bulletin for specific approval listings and available finishes.

See our "Specialties Page" for special finish charges — including Teflon Tape.

Items that are MTO (indicated by "x") allow 7-10 work days.

| M<br>T<br>O                                   | Part Number | Temperature | Finish | List Price |
|---|-------------|-------------|--------|------------|
| <b>1/2" ORIFICE, 1/2" NPT THREAD (15MM)</b>   |             |             |        |            |
|   | F1FRU0B     | 135°F 57°C  | Bronze | \$ 29.65   |
| X   | F1FRU0C     | 135°F 57°C  | Chrome | \$ 32.68   |
| X   | F1FRU0W     | 135°F 57°C  | White  | \$ 34.62   |
|   | F1FRU1B     | 155°F 68°C  | Bronze | \$ 29.65   |
|   | F1FRU1C     | 155°F 68°C  | Chrome | \$ 32.68   |
|   | F1FRU1W     | 155°F 68°C  | White  | \$ 34.62   |
|   | F1FRU5B     | 175°F 79°C  | Bronze | \$ 29.65   |
| X   | F1FRU5C     | 175°F 79°C  | Chrome | \$ 32.68   |
| X   | F1FRU5W     | 175°F 79°C  | White  | \$ 34.62   |
|   | F1FRU2B     | 200°F 93°C  | Bronze | \$ 29.65   |
| X   | F1FRU2C     | 200°F 93°C  | Chrome | \$ 32.68   |
| X   | F1FRU2W     | 200°F 93°C  | White  | \$ 34.62   |
|   | F1FRU3B     | 286°F 141°C | Bronze | \$ 29.65   |
| X   | F1FRU3C     | 286°F 141°C | Chrome | \$ 32.68   |
| X   | F1FRU3W     | 286°F 141°C | White  | \$ 34.62   |
| <b>17/32" ORIFICE, 3/4" NPT THREAD (20MM)</b> |             |             |        |            |
| X   | F1FRU0LB    | 135°F 57°C  | Bronze | \$ 36.07   |
| X   | F1FRU0LC    | 135°F 57°C  | Chrome | \$ 40.69   |
| X   | F1FRU0LW    | 135°F 57°C  | White  | \$ 41.62   |
|   | F1FRU1LB    | 155°F 68°C  | Bronze | \$ 36.07   |
| X   | F1FRU1LC    | 155°F 68°C  | Chrome | \$ 40.69   |
| X   | F1FRU1LW    | 155°F 68°C  | White  | \$ 41.62   |
| X   | F1FRU5LB    | 175°F 79°C  | Bronze | \$ 36.07   |
| X   | F1FRU5LC    | 175°F 79°C  | Chrome | \$ 40.69   |
| X   | F1FRU5LW    | 175°F 79°C  | White  | \$ 41.25   |
|   | F1FRU2LB    | 200°F 93°C  | Bronze | \$ 36.07   |
| X   | F1FRU2LC    | 200°F 93°C  | Chrome | \$ 40.69   |
| X   | F1FRU2LW    | 200°F 93°C  | White  | \$ 41.62   |
|   | F1FRU3LB    | 286°F 141°C | Bronze | \$ 36.07   |
| X   | F1FRU3LC    | 286°F 141°C | Chrome | \$ 40.69   |
| X   | F1FRU3LW    | 286°F 141°C | White  | \$ 41.62   |

WD      Requires Model D Sprinkler Wrench      \$      46.00



### F1FR UPRIGHT

- Quick Response
- Glass Bulb
- See Bulletin 136

Please refer to the latest sales bulletin for specific approval listings and available finishes. See our "Specialties Page" for special finish charges — including Teflon Tape. Items that are MTO (indicated by "x") allow 7-10 work days.

| M T O                                  | Part Number | Temperature                       | Finish | List Price |
|--|-------------|-----------------------------------|--------|------------|
| <b>3/8" ORIFICE, 1/2" NPT THREADS</b>  |             |                                   |        |            |
| X                                      | F1FRU03B    | 135°F 57°C                        | Bronze | \$ 38.38   |
| X                                      | F1FRU03C    | 135°F 57°C                        | Chrome | \$ 41.41   |
| X                                      | F1FRU03W    | 135°F 57°C                        | White  | \$ 41.98   |
| X                                      | F1FRU13B    | 155°F 68°C                        | Bronze | \$ 38.38   |
| X                                      | F1FRU13C    | 155°F 68°C                        | Chrome | \$ 41.41   |
| X                                      | F1FRU13W    | 155°F 68°C                        | White  | \$ 41.98   |
| X                                      | F1FRU53B    | 175°F 79°C                        | Bronze | \$ 38.38   |
| X                                      | F1FRU53C    | 175°F 79°C                        | Chrome | \$ 41.41   |
| X                                      | F1FRU53W    | 175°F 79°C                        | White  | \$ 41.98   |
| X                                      | F1FRU23B    | 200°F 93°C                        | Bronze | \$ 38.38   |
| X                                      | F1FRU23C    | 200°F 93°C                        | Chrome | \$ 41.41   |
| X                                      | F1FRU23W    | 200°F 93°C                        | White  | \$ 41.98   |
| X                                      | F1FRU33B    | 286°F 141°C                       | Bronze | \$ 38.38   |
| X                                      | F1FRU33C    | 286°F 141°C                       | Chrome | \$ 41.41   |
| X                                      | F1FRU33W    | 286°F 141°C                       | White  | \$ 41.98   |
| <b>7/16" ORIFICE, 1/2" NPT THREADS</b> |             |                                   |        |            |
| X                                      | F1FRU07B    | 135°F 57°C                        | Bronze | \$ 38.38   |
| X                                      | F1FRU07C    | 135°F 57°C                        | Chrome | \$ 41.41   |
| X                                      | F1FRU07W    | 135°F 57°C                        | White  | \$ 41.98   |
|  | F1FRU17B    | 155°F 68°C                        | Bronze | \$ 38.38   |
| X                                      | F1FRU17C    | 155°F 68°C                        | Chrome | \$ 41.41   |
| X                                      | F1FRU17W    | 155°F 68°C                        | White  | \$ 41.98   |
| X                                      | F1FRU57B    | 175°F 79°C                        | Bronze | \$ 38.38   |
| X                                      | F1FRU57C    | 175°F 79°C                        | Chrome | \$ 41.41   |
| X                                      | F1FRU57W    | 175°F 79°C                        | White  | \$ 41.98   |
|  | F1FRU27B    | 200°F 93°C                        | Bronze | \$ 38.38   |
| X                                      | F1FRU27C    | 200°F 93°C                        | Chrome | \$ 41.41   |
| X                                      | F1FRU27W    | 200°F 93°C                        | White  | \$ 41.98   |
| X                                      | F1FRU37B    | 286°F 141°C                       | Bronze | \$ 38.38   |
| X                                      | F1FRU37C    | 286°F 141°C                       | Chrome | \$ 41.41   |
| X                                      | F1FRU37W    | 286°F 141°C                       | White  | \$ 41.98   |
| <b>10MM ORIFICE, 10MM THREADS</b>      |             |                                   |        |            |
| X                                      | F1FRU0BMM   | 135°F 57°C                        | Bronze | \$ 34.87   |
| X                                      | F1FRU0CMM   | 135°F 57°C                        | Chrome | \$ 37.57   |
| X                                      | F1FRU0WMM   | 135°F 57°C                        | White  | \$ 38.07   |
|  | F1FRU1BMM   | 155°F 68°C                        | Bronze | \$ 34.87   |
| X                                      | F1FRU1CMM   | 155°F 68°C                        | Chrome | \$ 37.57   |
| X                                      | F1FRU1WMM   | 155°F 68°C                        | White  | \$ 38.07   |
| X                                      | F1FRU5BMM   | 175°F 79°C                        | Bronze | \$ 34.87   |
| X                                      | F1FRU5CMM   | 175°F 79°C                        | Chrome | \$ 37.57   |
| X                                      | F1FRU5WMM   | 175°F 79°C                        | White  | \$ 38.07   |
|  | F1FRU2BMM   | 200°F 93°C                        | Bronze | \$ 34.87   |
| X                                      | F1FRU2CMM   | 200°F 93°C                        | Chrome | \$ 37.57   |
| X                                      | F1FRU2WMM   | 200°F 93°C                        | White  | \$ 38.07   |
| X                                      | F1FRU3BMM   | 286°F 141°C                       | Bronze | \$ 34.87   |
| X                                      | F1FRU3CMM   | 286°F 141°C                       | Chrome | \$ 37.57   |
| X                                      | F1FRU3WMM   | 286°F 141°C                       | White  | \$ 38.07   |
|  | WD          | Requires Model D Sprinkler Wrench |        | \$ 46.00   |



### F1FR-300 UPRIGHT

- Quick Response
- Glass Bulb Sprinkler
- 300 PSI Rated
- See Bulletin 156

Please refer to the latest sales bulletin for specific approval listings and available finishes.  
See our "Specialties Page" for special finish charges — including Teflon Tape.  
Items that are MTO (indicated by "x") allow 7-10 work days.

| M<br>T<br>O   | Part Number | Temperature                       | Finish | List Price |
|---|-------------|-----------------------------------|--------|------------|
| <b>1/2" ORIFICE, 1/2" NPT THREAD (15MM) — 300 PSI</b>   |             |                                   |        |            |
|   | F1FRU0B3    | 135°F 57°C                        | Bronze | \$ 31.18   |
|   | F1FRU0C3    | 135°F 57°C                        | Chrome | \$ 34.32   |
|   | F1FRU0W3    | 135°F 57°C                        | White  | \$ 36.32   |
|   | F1FRU1B3    | 155°F 68°C                        | Bronze | \$ 31.18   |
|   | F1FRU1C3    | 155°F 68°C                        | Chrome | \$ 34.32   |
|   | F1FRU1W3    | 155°F 68°C                        | White  | \$ 36.32   |
|   | F1FRU5B3    | 175°F 79°C                        | Bronze | \$ 31.18   |
|   | F1FRU5C3    | 175°F 79°C                        | Chrome | \$ 34.32   |
|   | F1FRU5W3    | 175°F 79°C                        | White  | \$ 36.32   |
|   | F1FRU2B3    | 200°F 93°C                        | Bronze | \$ 31.18   |
|   | F1FRU2C3    | 200°F 93°C                        | Chrome | \$ 34.32   |
|   | F1FRU2W3    | 200°F 93°C                        | White  | \$ 36.32   |
|   | F1FRU3B3    | 286°F 141°C                       | Bronze | \$ 31.18   |
|   | F1FRU3C3    | 286°F 141°C                       | Chrome | \$ 34.32   |
|   | F1FRU3W3    | 286°F 141°C                       | White  | \$ 36.32   |
| <b>17/32" ORIFICE, 3/4" NPT THREAD (20MM) — 300 PSI</b> |             |                                   |        |            |
|   | F1FRU0LB3   | 135°F 57°C                        | Bronze | \$ 37.84   |
|   | F1FRU0LC3   | 135°F 57°C                        | Chrome | \$ 42.85   |
|   | F1FRU0LW3   | 135°F 57°C                        | White  | \$ 42.85   |
|   | F1FRU1LB3   | 155°F 68°C                        | Bronze | \$ 37.84   |
|   | F1FRU1LC3   | 155°F 68°C                        | Chrome | \$ 42.85   |
|   | F1FRU1LW3   | 155°F 68°C                        | White  | \$ 42.85   |
|   | F1FRU5LB3   | 175°F 79°C                        | Bronze | \$ 37.84   |
|   | F1FRU5LC3   | 175°F 79°C                        | Chrome | \$ 42.85   |
|   | F1FRU5LW3   | 175°F 79°C                        | White  | \$ 42.85   |
|   | F1FRU2LB3   | 200°F 93°C                        | Bronze | \$ 37.84   |
|   | F1FRU2LC3   | 200°F 93°C                        | Chrome | \$ 42.85   |
|   | F1FRU2LW3   | 200°F 93°C                        | White  | \$ 42.85   |
|   | F1FRU3LB3   | 286°F 141°C                       | Bronze | \$ 37.84   |
|   | F1FRU3LC3   | 286°F 141°C                       | Chrome | \$ 42.85   |
|   | F1FRU3LW3   | 286°F 141°C                       | White  | \$ 42.85   |
|   | WD          | Requires Model D Sprinkler Wrench |        | \$ 46.00   |



### F1FR PENDENT

- Quick Response
- Glass Bulb
- White Poly is Corrosion Resistant Polyester Coated
- K Factor = 5.6
- See Bulletins 136 & 014

Please refer to the latest sales bulletin for specific approval listings and available finishes.

See our "Specialties Page" for special finish charges — including Teflon Tape.

Items that are MTO (indicated by "x") allow 7-10 work days.

| M<br>T<br>O                                   | Part Number | Temperature | Finish     | List Price |
|---|-------------|-------------|------------|------------|
| <b>1/2" ORIFICE, 1/2" NPT THREAD (15MM)</b>   |             |             |            |            |
|   | F1FRP0B     | 135°F 57°C  | Bronze     | \$ 29.65   |
|   | F1FRP0C     | 135°F 57°C  | Chrome     | \$ 31.74   |
|   | F1FRP0W     | 135°F 57°C  | White Poly | \$ 33.66   |
|   | F1FRP1B     | 155°F 68°C  | Bronze     | \$ 29.65   |
|   | F1FRP1C     | 155°F 68°C  | Chrome     | \$ 31.74   |
|   | F1FRP1W     | 155°F 68°C  | White Poly | \$ 33.66   |
| X   | F1FRP5B     | 175°F 79°C  | Bronze     | \$ 29.65   |
| X   | F1FRP5C     | 175°F 79°C  | Chrome     | \$ 31.74   |
| X   | F1FRP5W     | 175°F 79°C  | White Poly | \$ 33.66   |
|   | F1FRP2B     | 200°F 93°C  | Bronze     | \$ 29.65   |
|   | F1FRP2C     | 200°F 93°C  | Chrome     | \$ 31.74   |
|   | F1FRP2W     | 200°F 93°C  | White Poly | \$ 33.66   |
|   | F1FRP3B     | 286°F 141°C | Bronze     | \$ 29.65   |
|   | F1FRP3C     | 286°F 141°C | Chrome     | \$ 31.74   |
| X   | F1FRP3W     | 286°F 141°C | White Poly | \$ 33.66   |
| <b>17/32" ORIFICE, 3/4" NPT THREAD (20MM)</b> |             |             |            |            |
| X   | F1FRP0LB    | 135°F 57°C  | Bronze     | \$ 37.14   |
|   | F1FRP0LC    | 135°F 57°C  | Chrome     | \$ 40.69   |
| X   | F1FRP0LW    | 135°F 57°C  | White      | \$ 41.25   |
|   | F1FRP1LB    | 155°F 68°C  | Bronze     | \$ 37.14   |
|   | F1FRP1LC    | 155°F 68°C  | Chrome     | \$ 40.69   |
| X   | F1FRP1LW    | 155°F 68°C  | White      | \$ 41.25   |
| X   | F1FRP5LB    | 175°F 79°C  | Bronze     | \$ 37.14   |
| X   | F1FRP5LC    | 175°F 79°C  | Chrome     | \$ 40.69   |
| X   | F1FRP5LW    | 175°F 79°C  | White      | \$ 41.25   |
| X   | F1FRP2LB    | 200°F 93°C  | Bronze     | \$ 37.14   |
| X   | F1FRP2LC    | 200°F 93°C  | Chrome     | \$ 40.69   |
| X   | F1FRP2LW    | 200°F 93°C  | White      | \$ 41.25   |
|   | F1FRP3LB    | 286°F 141°C | Bronze     | \$ 37.14   |
| X   | F1FRP3LC    | 286°F 141°C | Chrome     | \$ 40.69   |
| X   | F1FRP3LW    | 286°F 141°C | White      | \$ 41.25   |
| <b>F2 ESCUTCHEONS &amp; COLLAR ASSEMBLY</b>   |             |             |            |            |
|   | GF2B        | 1/2" (15mm) | Bronze     | \$ 11.30   |
|   | GF2C        | 1/2" (15mm) | Chrome     | \$ 6.16    |
|   | GF2W        | 1/2" (15mm) | White      | \$ 6.16    |
| X   | GF2LB       | 3/4" (20mm) | Bronze     | \$ 11.30   |
|   | GF2LC       | 3/4" (20mm) | Chrome     | \$ 6.16    |
|   | GF2LW       | 3/4" (20mm) | White      | \$ 6.16    |

|      |  |           |
|------|--|-----------|
| WD   | Requires Model D Sprinkler Wrench        | \$ 46.00  |
| WGFR | Recessed Use Model GFR1 Sprinkler Wrench | \$ 178.00 |



**F1FR PENDENT**

- Quick Response
- Glass Bulb
- See Bulletin 136

Please refer to the latest sales bulletin for specific approval listings and available finishes.

See our "Specialties Page" for special finishing charges — including Teflon Tape.

Items that are MTO (indicated by "x") allow 7-10 work days.

| M<br>T<br>O                            | Part Number | Temperature | Finish | List Price |
|--|-------------|-------------|--------|------------|
| <b>3/8" ORIFICE, 1/2" NPT THREADS</b>  |             |             |        |            |
| X                                      | F1FRP03B    | 135°F 57°C  | Bronze | \$ 38.38   |
| X                                      | F1FRP03C    | 135°F 57°C  | Chrome | \$ 41.41   |
| X                                      | F1FRP03W    | 135°F 57°C  | White  | \$ 41.98   |
| X                                      | F1FRP13B    | 155°F 68°C  | Bronze | \$ 38.38   |
|  | F1FRP13C    | 155°F 68°C  | Chrome | \$ 41.41   |
| X                                      | F1FRP13W    | 155°F 68°C  | White  | \$ 41.98   |
| X                                      | F1FRP53B    | 175°F 79°C  | Bronze | \$ 38.38   |
| X                                      | F1FRP53C    | 175°F 79°C  | Chrome | \$ 41.41   |
| X                                      | F1FRP53W    | 175°F 79°C  | White  | \$ 41.98   |
| X                                      | F1FRP23B    | 200°F 93°C  | Bronze | \$ 38.38   |
| X                                      | F1FRP23C    | 200°F 93°C  | Chrome | \$ 41.41   |
| X                                      | F1FRP23W    | 200°F 93°C  | White  | \$ 41.98   |
| X                                      | F1FRP33B    | 286°F 141°C | Bronze | \$ 38.38   |
| X                                      | F1FRP33C    | 286°F 141°C | Chrome | \$ 41.41   |
| X                                      | F1FRP33W    | 286°F 141°C | White  | \$ 41.98   |
| <b>7/16" ORIFICE, 1/2" NPT THREADS</b> |             |             |        |            |
| X                                      | F1FRP07B    | 135°F 57°C  | Bronze | \$ 38.38   |
| X                                      | F1FRP07C    | 135°F 57°C  | Chrome | \$ 41.41   |
| X                                      | F1FRP07W    | 135°F 57°C  | White  | \$ 41.98   |
| X                                      | F1FRP17B    | 155°F 68°C  | Bronze | \$ 38.38   |
|  | F1FRP17C    | 155°F 68°C  | Chrome | \$ 41.41   |
|  | F1FRP17W    | 155°F 68°C  | White  | \$ 41.98   |
| X                                      | F1FRP57B    | 175°F 79°C  | Bronze | \$ 38.38   |
| X                                      | F1FRP57C    | 175°F 79°C  | Chrome | \$ 41.41   |
| X                                      | F1FRP57W    | 175°F 79°C  | White  | \$ 41.98   |
| X                                      | F1FRP27B    | 200°F 93°C  | Bronze | \$ 38.38   |
| X                                      | F1FRP27C    | 200°F 93°C  | Chrome | \$ 41.41   |
| X                                      | F1FRP27W    | 200°F 93°C  | White  | \$ 41.98   |
| X                                      | F1FRP37B    | 286°F 141°C | Bronze | \$ 38.38   |
| X                                      | F1FRP37C    | 286°F 141°C | Chrome | \$ 41.41   |
| X                                      | F1FRP37W    | 286°F 141°C | White  | \$ 41.98   |
| <b>10MM ORIFICE, 10MM THREADS</b>      |             |             |        |            |
| X                                      | F1FRP0BMM   | 135°F 57°C  | Bronze | \$ 34.87   |
| X                                      | F1FRP0CMM   | 135°F 57°C  | Chrome | \$ 37.57   |
| X                                      | F1FRP0WMM   | 135°F 57°C  | White  | \$ 38.07   |
| X                                      | F1FRP1BMM   | 155°F 68°C  | Bronze | \$ 34.87   |
| X                                      | F1FRP1CMM   | 155°F 68°C  | Chrome | \$ 37.57   |
| X                                      | F1FRP1WMM   | 155°F 68°C  | White  | \$ 38.07   |
| X                                      | F1FRP5BMM   | 175°F 79°C  | Bronze | \$ 34.87   |
| X                                      | F1FRP5CMM   | 175°F 79°C  | Chrome | \$ 37.57   |
| X                                      | F1FRP5WMM   | 175°F 79°C  | White  | \$ 38.07   |
| X                                      | F1FRP2BMM   | 200°F 93°C  | Bronze | \$ 34.87   |
| X                                      | F1FRP2CMM   | 200°F 93°C  | Chrome | \$ 37.57   |
| X                                      | F1FRP2WMM   | 200°F 93°C  | White  | \$ 38.07   |
| X                                      | F1FRP3BMM   | 286°F 141°C | Bronze | \$ 34.87   |
| X                                      | F1FRP3CMM   | 286°F 141°C | Chrome | \$ 37.57   |
| X                                      | F1FRP3WMM   | 286°F 141°C | White  | \$ 38.07   |

|      |  |           |
|------|--|-----------|
| WD   | Requires Model D Sprinkler Wrench        | \$ 46.00  |
| WGFR | Recessed Use Model GFR1 Sprinkler Wrench | \$ 178.00 |



**F1FR-300 PENDENT**

- Quick Response
- Glass Bulb Sprinkler
- 300 PSI Rated
- See Bulletin 156

Please refer to the latest sales bulletin for specific approval listings and available finishes.

See our "Specialties Page" for special finish charges — including Teflon Tape.

Items that are MTO (indicated by "x") allow 7-10 work days.

| M<br>T<br>O   | Part Number | Temperature | Finish | List Price |
|---|-------------|-------------|--------|------------|
| <b>1/2" ORIFICE, 1/2" NPT THREAD (15MM) — 300 PSI</b>   |             |             |        |            |
|   | F1FRPOB3    | 135°F 57°C  | Bronze | \$ 31.18   |
|   | F1FRPOC3    | 135°F 57°C  | Chrome | \$ 33.31   |
|   | F1FRPOW3    | 135°F 57°C  | White  | \$ 35.30   |
|   | F1FRP1B3    | 155°F 68°C  | Bronze | \$ 31.18   |
|   | F1FRP1C3    | 155°F 68°C  | Chrome | \$ 33.31   |
|   | F1FRP1W3    | 155°F 68°C  | White  | \$ 35.30   |
|   | F1FRP5B3    | 175°F 79°C  | Bronze | \$ 31.18   |
|   | F1FRP5C3    | 175°F 79°C  | Chrome | \$ 33.31   |
|   | F1FRP5W3    | 175°F 79°C  | White  | \$ 35.30   |
|   | F1FRP2B3    | 200°F 93°C  | Bronze | \$ 31.18   |
|   | F1FRP2C3    | 200°F 93°C  | Chrome | \$ 33.31   |
|   | F1FRP2W3    | 200°F 93°C  | White  | \$ 35.30   |
|   | F1FRP3B3    | 286°F 141°C | Bronze | \$ 31.18   |
|   | F1FRP3C3    | 286°F 141°C | Chrome | \$ 33.31   |
|   | F1FRP3W3    | 286°F 141°C | White  | \$ 35.30   |
| <b>17/32" ORIFICE, 3/4" NPT THREAD (20MM) — 300 PSI</b> |             |             |        |            |
|   | F1FRPOLB3   | 135°F 57°C  | Bronze | \$ 38.93   |
|   | F1FRPOLC3   | 135°F 57°C  | Chrome | \$ 42.85   |
|   | F1FRPOLW3   | 135°F 57°C  | White  | \$ 42.85   |
|   | F1FRP1LB3   | 155°F 68°C  | Bronze | \$ 38.93   |
|   | F1FRP1LC3   | 155°F 68°C  | Chrome | \$ 42.85   |
|   | F1FRP1LW3   | 155°F 68°C  | White  | \$ 42.85   |
|   | F1FRP5LB3   | 175°F 79°C  | Bronze | \$ 38.93   |
|   | F1FRP5LC3   | 175°F 79°C  | Chrome | \$ 42.85   |
|   | F1FRP5LW3   | 175°F 79°C  | White  | \$ 42.85   |
|   | F1FRP2LB3   | 200°F 93°C  | Bronze | \$ 38.93   |
|   | F1FRP2LC3   | 200°F 93°C  | Chrome | \$ 42.85   |
|   | F1FRP2LW3   | 200°F 93°C  | White  | \$ 42.85   |
|   | F1FRP3LB3   | 286°F 141°C | Bronze | \$ 38.93   |
|   | F1FRP3LC3   | 286°F 141°C | Chrome | \$ 42.85   |
|   | F1FRP3LW3   | 286°F 141°C | White  | \$ 42.85   |
| <b>G/F1 ESCUTCHEONS</b>                                 |             |             |        |            |
|   | GF1B        | 1/2" (15mm) | Brass  | \$ 12.44   |
|   | GF1C        | 1/2" (15mm) | Chrome | \$ 6.16    |
|   | GF1W        | 1/2" (15mm) | White  | \$ 6.16    |
|   | GF1LB       | 3/4" (20mm) | Brass  | \$ 12.44   |
|   | GF1LC       | 3/4" (20mm) | Chrome | \$ 6.16    |
|   | GF1LW       | 3/4" (20mm) | White  | \$ 6.16    |

|      |  |           |
|------|--|-----------|
| WD   | Requires Model D Sprinkler Wrench        | \$ 46.00  |
| WGFR | Recessed Use Model GFR1 Sprinkler Wrench | \$ 178.00 |



### F1FR CONVENTIONAL

- Quick Response
- Glass Bulb
- See Bulletin 136

Please refer to the latest sales bulletin for specific approval listings and available finishes.  
See our "Specialties Page" for special finish charges — including Teflon Tape.  
Items that are MTO (indicated by "x") allow 7-10 work days.

| M<br>T<br>O                                    | Part Number | Temperature | Finish | List Price |
|--|-------------|-------------|--------|------------|
| <b>1/2" ORIFICE, 1/2" NPT THREADS (15MM)</b>   |             |             |        |            |
| X  | F1FRC0B     | 135°F 57°C  | Bronze | \$ 28.24   |
| X  | F1FRC0C     | 135°F 57°C  | Chrome | \$ 30.26   |
|  | F1FRC0W     | 135°F 57°C  | White  | \$ 32.12   |
| X  | F1FRC1B     | 155°F 68°C  | Bronze | \$ 28.24   |
|  | F1FRC1C     | 155°F 68°C  | Chrome | \$ 30.26   |
|  | F1FRC1W     | 155°F 68°C  | White  | \$ 32.12   |
| X  | F1FRC5B     | 175°F 79°C  | Bronze | \$ 28.24   |
| X  | F1FRC5C     | 175°F 79°C  | Chrome | \$ 30.26   |
|  | F1FRC5W     | 175°F 79°C  | White  | \$ 32.12   |
| X  | F1FRC2B     | 200°F 93°C  | Bronze | \$ 28.24   |
| X  | F1FRC2C     | 200°F 93°C  | Chrome | \$ 30.26   |
| X  | F1FRC2W     | 200°F 93°C  | White  | \$ 32.12   |
| X  | F1FRC3B     | 286°F 141°C | Bronze | \$ 28.24   |
| X  | F1FRC3C     | 286°F 141°C | Chrome | \$ 30.26   |
| X  | F1FRC3W     | 286°F 141°C | White  | \$ 32.12   |
| <b>17/32" ORIFICE, 3/4" NPT THREADS (20MM)</b> |             |             |        |            |
| X  | F1FRC0LB    | 135°F 57°C  | Bronze | \$ 34.19   |
| X  | F1FRC0LC    | 135°F 57°C  | Chrome | \$ 37.57   |
| X  | F1FRC0LW    | 135°F 57°C  | White  | \$ 38.07   |
| X  | F1FRC1LB    | 155°F 68°C  | Bronze | \$ 34.19   |
| X  | F1FRC1LC    | 155°F 68°C  | Chrome | \$ 37.57   |
| X  | F1FRC1LW    | 155°F 68°C  | White  | \$ 38.07   |
| X  | F1FRC5LB    | 175°F 79°C  | Bronze | \$ 34.19   |
| X  | F1FRC5LC    | 175°F 79°C  | Chrome | \$ 37.57   |
| X  | F1FRC5LW    | 175°F 79°C  | White  | \$ 38.07   |
| X  | F1FRC2LB    | 200°F 93°C  | Bronze | \$ 34.19   |
| X  | F1FRC2LC    | 200°F 93°C  | Chrome | \$ 37.57   |
| X  | F1FRC2LW    | 200°F 93°C  | White  | \$ 38.07   |
| X  | F1FRC3LB    | 286°F 141°C | Bronze | \$ 34.19   |
| X  | F1FRC3LC    | 286°F 141°C | Chrome | \$ 37.57   |
| X  | F1FRC3LW    | 286°F 141°C | White  | \$ 38.07   |

WD      Requires Model D Sprinkler Wrench      \$      46.00



### F1FR HSW

- Quick Response
- Glass Bulb
- See Bulletin 136

Please refer to the latest sales bulletin for specific approval listings and available finishes.  
See our "Specialties Page" for special finish charges — including Teflon Tape.  
Items that are MTO (indicated by "x") allow 7-10 work days.

| M<br>T<br>O                                  | Part Number | Temperature | Finish | List Price |
|--|-------------|-------------|--------|------------|
| <b>1/2" ORIFICE, 1/2" NPT THREADS (15MM)</b> |             |             |        |            |
| X  | F1FRH0B     | 135°F 57°C  | Bronze | \$ 34.17   |
|  | F1FRH0C     | 135°F 57°C  | Chrome | \$ 36.59   |
|  | F1FRH0W     | 135°F 57°C  | White  | \$ 40.43   |
|  | F1FRH1B     | 155°F 68°C  | Bronze | \$ 34.17   |
|  | F1FRH1C     | 155°F 68°C  | Chrome | \$ 36.59   |
|  | F1FRH1W     | 155°F 68°C  | White  | \$ 40.43   |
| X  | F1FRH5B     | 175°F 79°C  | Bronze | \$ 34.17   |
| X  | F1FRH5C     | 175°F 79°C  | Chrome | \$ 36.59   |
| X  | F1FRH5W     | 175°F 79°C  | White  | \$ 40.43   |
|  | F1FRH2B     | 200°F 93°C  | Bronze | \$ 34.17   |
|  | F1FRH2C     | 200°F 93°C  | Chrome | \$ 36.59   |
|  | F1FRH2W     | 200°F 93°C  | White  | \$ 40.43   |
|  | F1FRH3B     | 286°F 141°C | Bronze | \$ 34.17   |
| X  | F1FRH3C     | 286°F 141°C | Chrome | \$ 36.59   |
| X  | F1FRH3W     | 286°F 141°C | White  | \$ 40.43   |
| <b>F2 ESCUTCHEONS &amp; COLLAR ASSEMBLY</b>  |             |             |        |            |
|  | GF2B        | 1/2" (15mm) | Bronze | \$ 11.30   |
|  | GF2C        | 1/2" (15mm) | Chrome | \$ 6.16    |
|  | GF2W        | 1/2" (15mm) | White  | \$ 6.16    |

|      |  |           |
|------|--|-----------|
| WD   | Requires Model D Sprinkler Wrench        | \$ 46.00  |
| WGFR | Recessed Use Model GFR1 Sprinkler Wrench | \$ 178.00 |



**MODEL F1FR VSW**

- Quick Response
- Glass Bulb
- See Bulletin 136

| M<br>T<br>O                                  | Part Number | Temperature | Finish | List Price |
|--|-------------|-------------|--------|------------|
| <b>1/2" ORIFICE, 1/2" NPT THREADS (15MM)</b> |             |             |        |            |
| X  | F1FRV0B     | 135°F 57°C  | Bronze | \$ 37.31   |
| X  | F1FRV0C     | 135°F 57°C  | Chrome | \$ 40.33   |
| X  | F1FRV0W     | 135°F 57°C  | White  | \$ 41.62   |
|  | F1FRV1B     | 155°F 68°C  | Bronze | \$ 37.31   |
|  | F1FRV1C     | 155°F 68°C  | Chrome | \$ 40.33   |
|  | F1FRV1W     | 155°F 68°C  | White  | \$ 41.62   |
| X  | F1FRV5B     | 175°F 79°C  | Bronze | \$ 37.31   |
| X  | F1FRV5C     | 175°F 79°C  | Chrome | \$ 40.33   |
| X  | F1FRV5W     | 175°F 79°C  | White  | \$ 41.62   |
| X  | F1FRV2B     | 200°F 93°C  | Bronze | \$ 37.31   |
| X  | F1FRV2C     | 200°F 93°C  | Chrome | \$ 40.33   |
| X  | F1FRV2W     | 200°F 93°C  | White  | \$ 41.62   |
| X  | F1FRV3B     | 286°F 141°C | Bronze | \$ 37.31   |
| X  | F1FRV3C     | 286°F 141°C | Chrome | \$ 40.33   |
| X  | F1FRV3W     | 286°F 141°C | White  | \$ 41.62   |



**MODEL GFR UPRIGHT**

- Quick Response
- Solder Type
- See Bulletin 131

Please refer to the latest sales bulletin for specific approval listings and available finishes.  
See our "Specialties Page" for special finish charges — including Teflon Tape.  
Items that are MTO (indicated by "x") allow 7-10 work days.

|  |         |             |        |          |
|--|---------|-------------|--------|----------|
| <b>1/2" ORIFICE, 1/2" NPT THREADS (15MM)</b>   |         |             |        |          |
|  | GFRUB   | 165°F 74°C  | Bronze | \$ 39.73 |
|  | GFRUC   | 165°F 74°C  | Chrome | \$ 43.61 |
|  | GFRU2B  | 212°F 100°C | Bronze | \$ 39.73 |
|  | GFRU2C  | 212°F 100°C | Chrome | \$ 43.61 |
| <b>17/32" ORIFICE, 3/4" NPT THREADS (20MM)</b> |         |             |        |          |
|  | GFRULB  | 165°F 74°C  | Bronze | \$ 49.43 |
|  | GFRULC  | 165°F 74°C  | Chrome | \$ 55.79 |
| <b>3/8" ORIFICE, 1/2" NPT THREADS</b>          |         |             |        |          |
| X  | GFRU3B  | 165°F 74°C  | Bronze | \$ 50.01 |
| X  | GFRU3C  | 165°F 74°C  | Chrome | \$ 57.96 |
| <b>7/16" ORIFICE, 1/2" NPT THREADS</b>         |         |             |        |          |
| X  | GFRU7B  | 165°F 74°C  | Bronze | \$ 50.01 |
| X  | GFRU7C  | 165°F 74°C  | Chrome | \$ 57.96 |
| <b>10MM THREADS</b>                            |         |             |        |          |
| X  | GFRUBMM | 165°F 74°C  | Bronze | \$ 43.48 |
| X  | GFRUCMM | 165°F 74°C  | Chrome | \$ 48.91 |

WD Requires Model D Sprinkler Wrench \$ 46.00

\* Please note that all of the GFR's are offered in 212°F



**MODEL GFR PENDENT**

- Quick Response
- Solder Type
- See Bulletin 131

| M<br>T<br>O                                    | Part Number | Temperature | Finish | List Price |
|--|-------------|-------------|--------|------------|
| <b>1/2" ORIFICE, 1/2" NPT THREADS (15MM)</b>   |             |             |        |            |
|  | GFRPB       | 165°F 74°C  | Bronze | \$ 39.73   |
|  | GFRPC       | 165°F 74°C  | Chrome | \$ 43.61   |
|  | GFRP2B      | 212°F 100°C | Bronze | \$ 39.73   |
|  | GFRP2C      | 212°F 100°C | Chrome | \$ 43.61   |
| <b>17/32" ORIFICE, 3/4" NPT THREADS (20MM)</b> |             |             |        |            |
| X  | GFRPLB      | 165°F 74°C  | Bronze | \$ 49.43   |
| X  | GFRPLC      | 165°F 74°C  | Chrome | \$ 55.79   |
| <b>3/8" ORIFICE, 1/2" NPT THREADS</b>          |             |             |        |            |
| X  | GFRP3B      | 165°F 74°C  | Bronze | \$ 49.43   |
| X  | GFRP3C      | 165°F 74°C  | Chrome | \$ 55.79   |
| <b>7/16" ORIFICE, 1/2" NPT THREADS</b>         |             |             |        |            |
| X  | GFRP7B      | 165°F 74°C  | Bronze | \$ 49.43   |
| X  | GFRP7C      | 165°F 74°C  | Chrome | \$ 55.79   |
| <b>10MM THREADS</b>                            |             |             |        |            |
| X  | GFRPBMM     | 165°F 74°C  | Bronze | \$ 43.48   |
| X  | GFRPCMM     | 165°F 74°C  | Chrome | \$ 48.91   |



**MODEL GFR HSW**

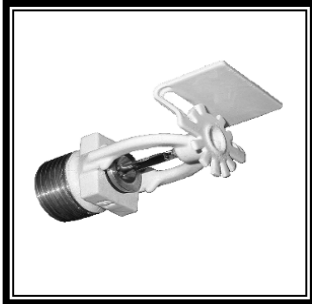
- Quick Response
- Solder Type
- See Bulletin 131

Please refer to the latest sales bulletin for specific approval listings and available finishes. See our "Specialties Page" for special finish charges — including Teflon Tape. Items that are MTO (indicated by "x") allow 7-10 work days.

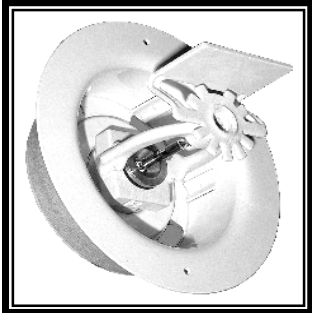
|  |        |             |        |          |
|--|--------|-------------|--------|----------|
| <b>1/2" ORIFICE, 1/2" NPT THREADS (15MM)</b>   |        |             |        |          |
|  | GFRHB  | 165°F 74°C  | Bronze | \$ 43.61 |
| X  | GFRHC  | 165°F 74°C  | Chrome | \$ 47.47 |
|  | GFRH2B | 212°F 100°C | Bronze | \$ 43.61 |
| X  | GFRH2C | 212°F 100°C | Chrome | \$ 47.47 |
| <b>17/32" ORIFICE, 3/4" NPT THREADS (20MM)</b> |        |             |        |          |
| X  | GFRHLB | 165°F 74°C  | Bronze | \$ 45.56 |
| X  | GFRHLC | 165°F 74°C  | Chrome | \$ 51.37 |
| <b>3/8" ORIFICE, 1/2" NPT THREADS</b>          |        |             |        |          |
| X  | GFRH3B | 165°F 74°C  | Bronze | \$ 51.95 |
| X  | GFRH3C | 165°F 74°C  | Chrome | \$ 55.79 |
| <b>7/16" ORIFICE, 1/2" NPT THREADS</b>         |        |             |        |          |
| X  | GFRH7B | 165°F 74°C  | Bronze | \$ 51.95 |
| X  | GFRH7C | 165°F 74°C  | Chrome | \$ 55.79 |
| <b>GF2 ESCUTCHEONS</b>                         |        |             |        |          |
|  | GF2B   | 1/2" (15mm) | Brass  | \$ 11.30 |
|  | GF2C   | 1/2" (15mm) | Chrome | \$ 6.16  |
|  | GF2W   | 1/2" (15mm) | White  | \$ 6.16  |
|  | GF2LB  | 3/4" (20mm) | Brass  | \$ 11.30 |
|  | GF2LC  | 3/4" (20mm) | Chrome | \$ 6.16  |
|  | GF2LW  | 3/4" (20mm) | White  | \$ 6.16  |

|      |                                    |           |
|------|------------------------------------|-----------|
| WD   | Requires Model D Sprinkler Wrench  | \$ 46.00  |
| WGFR | For Recessed Use Model GFR1 Wrench | \$ 178.00 |

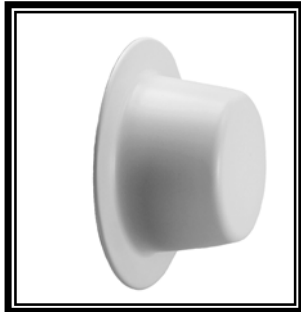
\* Also available in 212°F



SW56 (HSW)



SW56 (REC HSW)



SWC56 (CCP CONC)

SW56, SW56 RECESSED  
& SWC56 CONCEALED

- Quick Response
- 5.6 K Factor
- HSW, HSW REC, Concealed
- 300 PSI (20,7bar) Rated
- See Bulletin 168

Please refer to the latest sales bulletin for specific approval listings and available finishes.  
See our "Specialties Page" for special finish charges — including Teflon Tape.  
Items that are MTO (indicated by "x") allow 7-10 work days.

| M<br>T<br>O   | Part Number | Temperature |        | Finish    | List Price |
|---|-------------|-------------|--------|-----------|------------|
| <b>SW56 HSW — SPRINKLER ONLY</b>                            |             |             |        |           |            |
|   | SWH0B       | 135°F       | 57°C   | Bronze    | \$ 35.54   |
|   | SWH0C       | 135°F       | 57°C   | Chrome    | \$ 38.01   |
|   | SWH0W       | 135°F       | 57°C   | White     | \$ 41.90   |
|   | SWH1B       | 155°F       | 68°C   | Bronze    | \$ 35.54   |
|   | SWH1C       | 155°F       | 68°C   | Chrome    | \$ 38.01   |
|   | SWH1W       | 155°F       | 68°C   | White     | \$ 41.90   |
| <b>FP PUSH-ON/THREAD-OFF ESCUTCHEON</b>                     |             |             |        |           |            |
|   | FPC         | 1/2"        | (15mm) | Chrome    | \$ 11.88   |
|   | FPW         | 1/2"        | (15mm) | White     | \$ 11.88   |
| <b>SWC56 (USED FOR CONCEALED) — SPRINKLER ONLY</b>          |             |             |        |           |            |
|   | SWC560      | 135°F       | 57°C   | Bronze    | \$ 36.07   |
|   | SWC561      | 155°F       | 68°C   | Bronze    | \$ 36.07   |
| <b>REQUIRED COVERPLATES FOR CONCEALED (1/2" ADJUSTMENT)</b> |             |             |        |           |            |
|   | CHWNS       | 135°F       | 57°C   | White     | \$ 20.80   |
| X   | CHSPNS      | 135°F       | 57°C   | Specialty | \$ 31.20   |

|      |                                   |    |        |
|------|-----------------------------------|----|--------|
| WD   | Requires Model D Sprinkler Wrench | \$ | 46.00  |
| WGFR | Requires Model GFR1 Wrench        | \$ | 178.00 |

**Notes:**

For custom finishes, customer should provide paint sample.  
Allow at least 2-3 weeks. A set-up charge is required for all orders under 500 pieces. Consult factory for details.