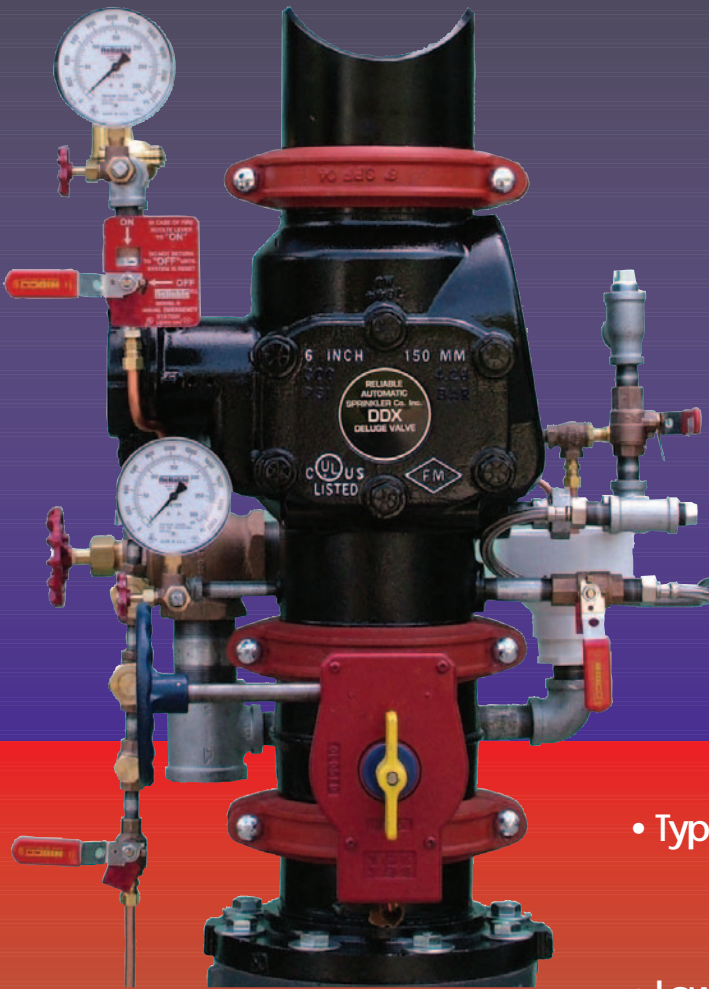


# Reliable's New DDX Valve

## 1 Valve, 9 Systems!



- Wet Pilot Deluge
- Dry Pilot Deluge
- Electric Deluge
- Wet Pilot, Single-Interlock Preaction System
- Dry Pilot, Single-Interlock Preaction System
- Electric, Single-Interlock Preaction System
- Type D, Double-Interlock Preaction System
- Type F, Double-Interlock Preaction System
- Low Pressure Dry Pipe Valve

### DDX Features:

- 4" (100mm), 6" (150mm) & 165mm
- Only one main drain
- 250 psi (17,2 bar)
- Lightweight, both ends grooved
- System side check valve not required
- External reset
- No priming water required
- The DDX LP dry system uses the same low pressures as the LDX
- Quick installing segmented trim
- Hydrostatically tested with the clapper closed
- cULus Listed & FM Approved
- Refer to Bulletins 510 (DDX) & 357 (LP Dry Pipe Valve System)