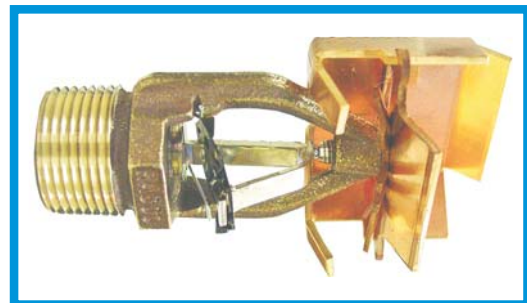


A Specially Engineered Fire Sprinkler For Pre-Engineered Metal Buildings

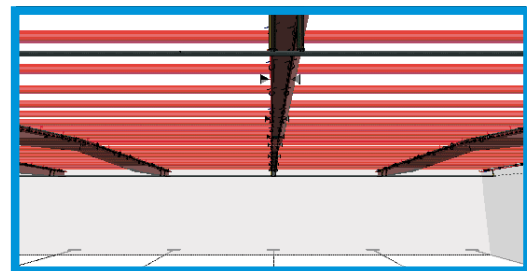
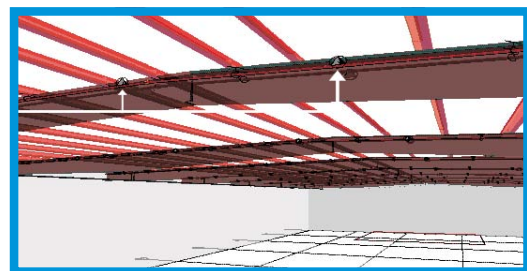
Reliable's MBEC-14

PATENT PENDING!



Designed to be installed on piping that is supported by the primary roof beams and not the purlins.

- No more purlin punching, bent purlin lips, or the extra roof load caused by the fire sprinkler line piping.
- More flexibility for installing lighting and other building features, because the middle of each bay is not filled with sprinkler piping.



For NFPA-13 Occupancies from Ordinary Hazard through Extra Hazard

- Manufacturing facilities, retail centers, automobile repair garages, transportation facilities, horse stables, hangars, paper mills and wood products.
- Miscellaneous and in-process storage as permitted by NFPA-13.

Other advantages over existing fire sprinkler technology

Lower Installation costs

- The MBEC-14 is an Extended Coverage Sprinkler providing a coverage up to 175 square feet.
- Because the lines are installed back-to-back on the beams and not 10 to 12 feet or more apart, two lines of sprinklers may be installed at the same time.

Requires lower water pressures

- The very-large K factor of 14.0 permits a minimum end head pressure of only 7psi for ordinary hazard group 2 occupancies and low pressures for higher hazards.

What size buildings will be protected by this sprinkler?

- Z purlins up to 10" in size
- Buildings up to 32' in height
- Bay sizes up to 25' in width

For more information, refer to Bulletin 169