



**Model FA2 Grooved Flange  
PN10 / PN16**

cULus Listed, FM Approved

**FA2 Grooved Flange Technical Data**

**Operating Specifications**  
**Maximum Working Pressure:**  
 300 psi (20.7 bar)  
**Operating Temperature**  
 -30 °F to 230 °F (-34 °C to 110 °C)

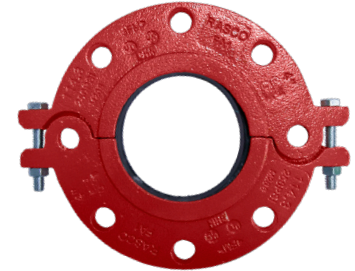
**Material Specifications**  
**Body:** ASTM A536 Grade 65-45-12 Ductile Iron

**Design Specification**  
**Groove:** AWWA-C606  
**Flange:** EN1092-2 PN10 [2"-6" (50-150 mm)]  
 EN1092-2 PN16 (All sizes)

**Bolt Specification**  
 ISO 898-1 Grade 8.8

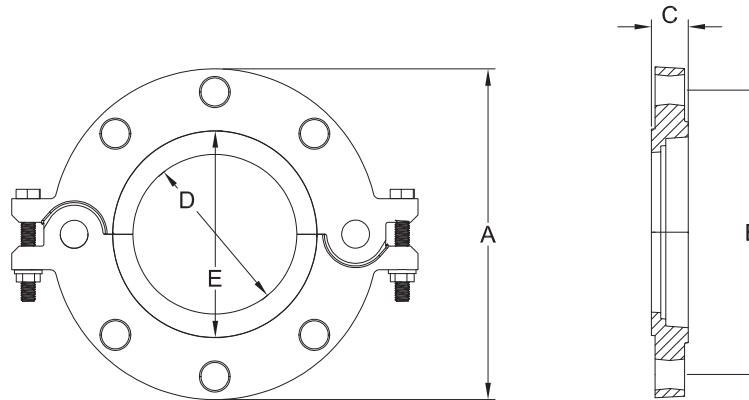
**Available Finishes**  
**Housing:**  
 Red powder-coating  
 Hot dipped galvanized (ASTM A-153)  
**Bolts:**  
 Zinc Electroplating

**Listings and Approvals**  
 cULus Listed (All sizes)  
 FM Approved [2"-8" (50-200 mm)]



**FA2 Grooved Flange Dimensions**

**Figure 1**



**Table A**

Nominal Size in (mm)	Pipe O.D. in (mm)	Max. End Load lbs (KN)	Bolts Size in	Number of Bolts	Listings and Approvals	Dimensions					Weight lb (kg)
						A in (mm)	B in (mm)	C in (mm)	D in (mm)	E in (mm)	
2 (50)	2.375 (60.3)	1034 (4.6)	M16	4	cULus, FM	6-7/16 (164)	4-15/16 (125)	1 (25)	2-3/8 (60)	3-1/16 (78)	3.28 (1.64)
2-1/2 (65)	2.875 (73.0)	1493 (6.64)	M16	4	cULus, FM	7-3/16 (182)	5-11/16 (145)	1 (25)	2-7/8 (73)	3-11/16 (93)	4.75 (2.16)
76 mm	3.000 (76.1)	1641 (7.30)	M16	4	cULus, FM	7-3/16 (182)	5-11/16 (145)	1 (25)	3 (76)	3-11/16 (93)	4.75 (2.16)
3 (80)	3.500 (88.9)	2226 (9.90)	M16	8	cULus, FM	7-5/8 (194)	3-5/16 (160)	1 (25)	3-1/2 (89)	4-1/4 (107)	5.54 (2.52)
4 (100)	4.500 (114.3)	3687 (16.40)	M16	8	cULus, FM	8-1/2 (216)	7-1/16 (180)	1 (25)	4-1/2 (114)	5-3/16 (131)	5.83 (2.65)
139 mm	5.500 (139.7)	5508 (24.50)	M16	8	cULus, FM	9-3/4 (247)	8-1/4 (210)	1 (25)	5-1/2 (140)	6-3/16 (157)	7.11 (3.23)
165 mm	6.500 (165.1)	7689 (34.20)	M20	8	cULus, FM	11-1/8 (282)	9-7/16 (240)	1 (25)	6-1/2 (165)	7-5/16 (185)	7.74 (3.52)
6 (150)	6.625 (168.3)	8003 (35.60)	M20	8	cULus, FM	11-1/8 (282)	9-7/16 (240)	1 (25)	6-5/8 (168)	7-5/16 (185)	7.52 (3.42)
8 (200)	8.625 (219.1)	13556 (60.30)	M20	12	cULus, FM	13-3/16 (335)	11-5/8 (295)	1-1/16 (27)	8-5/8 (219)	9-1/4 (234)	13.2 (6)
10 (250)	10.750 (273.0)	21042 (93.6)	M24	12	cULus	15-15/16 (405)	14 (355)	1-3/16 (30)	10-3/4 (273)	12-1/8 (308)	17.23 (7.84)
12 (300)	12.750 (323.9)	29630 (131.8)	M24	12	cULus	18-1/8 (460)	16-1/8 (410)	1-1/4 (32)	12-3/4 (324)	14-1/8 (359)	32.56 (14.8)

**FA2 Pipe Compatibility**

**Table B**

Nominal Size in (mm)	Groove Type	Pipe	Approvals
2 (50)	Rolled	10	cULus, FM
	Cut, Rolled	40	
2-1/2 (65)	Rolled	10	cULus, FM
	Cut, Rolled	40	
76.1 mm	Rolled	10	FM
	Cut, Rolled	40	FM
		ISO 4200	cULus
3 (80)	Rolled	10	cULus, FM
	Cut, Rolled	40	
4 (100)	Rolled	10	cULus, FM
	Cut, Rolled	40	
139.7 mm	Rolled	10	FM
	Cut, Rolled	40	FM
		ISO 4200	cULus
165.1 mm	Rolled	10	FM
	Cut, Rolled	40	FM
		ISO 4200	cULus
6 (150)	Rolled	10	cULus, FM
	Cut, Rolled	40	
8 (200)	Rolled	10	cULus, FM
	Cut, Rolled	40	
10 (250)	Rolled	10	cULus
	Cut, Rolled	40	
12 (300)	Rolled	10	cULus
	Cut, Rolled	40	

P/N 9999970693